

**LEGEND:**

- V — = Water Line
- FD — = Buried Fiber Optic Line
- G — = Gas Line
- OHE — = Overhead Electric Line
- UGE — = Underground Electric Line
- SWS — = Storm Water Sewer Line
- E.C. — = Exist. Contour (1'-ft. Intervals)
- 1.50' — = Water Valve
- 8" WV — = AT&T Box
- PP — = Power Pole

N. 1646384.832, E. 1663730.803  
16" WL Line No. 2, Sta. 21+25.00  
Install Fire Hydrant Assembly  
L=18.00'  
Fire hydrant pipe shall be ductile  
iron restrained joint.  
Top of Valve Box El.=1262.20  
Fire Hydrant Bury El.=1265.10  
See detail sht. 10.

N. 1646241.179, E. 1664266.890  
16" WL Line No. 2, Sta. 26+80.00  
Install 1" Air Release Assembly  
See detail sht. 11.

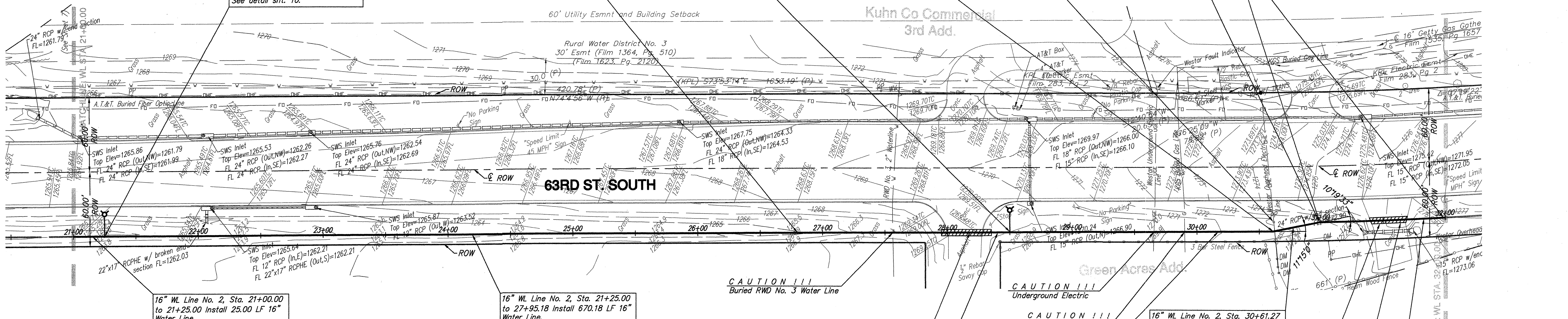
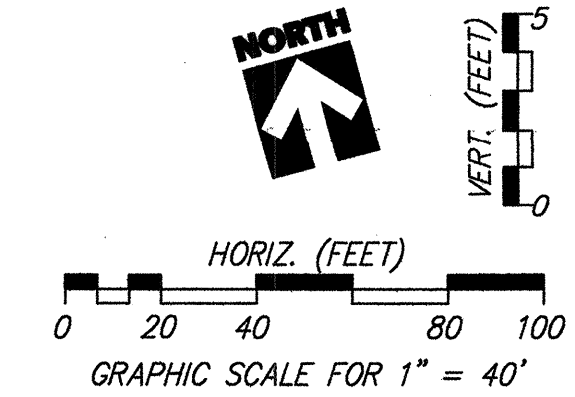
N. 1646197.179, E. 1664431.094  
16" WL Line No. 2, Sta. 28+50.00  
Install Fire Hydrant Assembly  
L=18.00'  
Fire hydrant pipe shall be ductile  
iron restrained joint.  
Top of Valve Box El.=1269.00  
Fire Hydrant Bury El.=1269.80  
See detail sht. 10.

Provide protection and/or bracing as necessary  
to protect existing Westar Power Poles and  
dead men during Water Line construction.

N. 1646142.495, E. 1664635.162  
16" WL Line No. 2, Sta. 30+61.27  
Install 16" 11-1/4" CIMJ Bend  
Horiz. Defl. Angle 11°15'00" (Lt.)

N. 1646140.022, E. 1664672.886  
16" WL Line No. 2, Sta. 30+99.07  
Install 16" 11-1/4" CIMJ Bend  
Horiz. Defl. Angle 10°19'33" (Rt.)

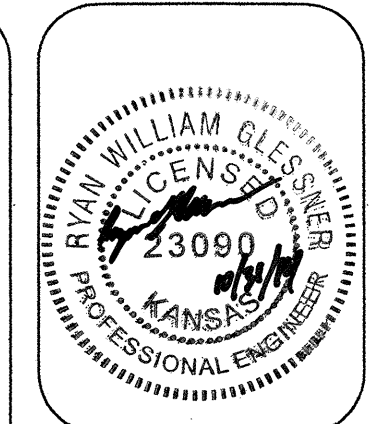
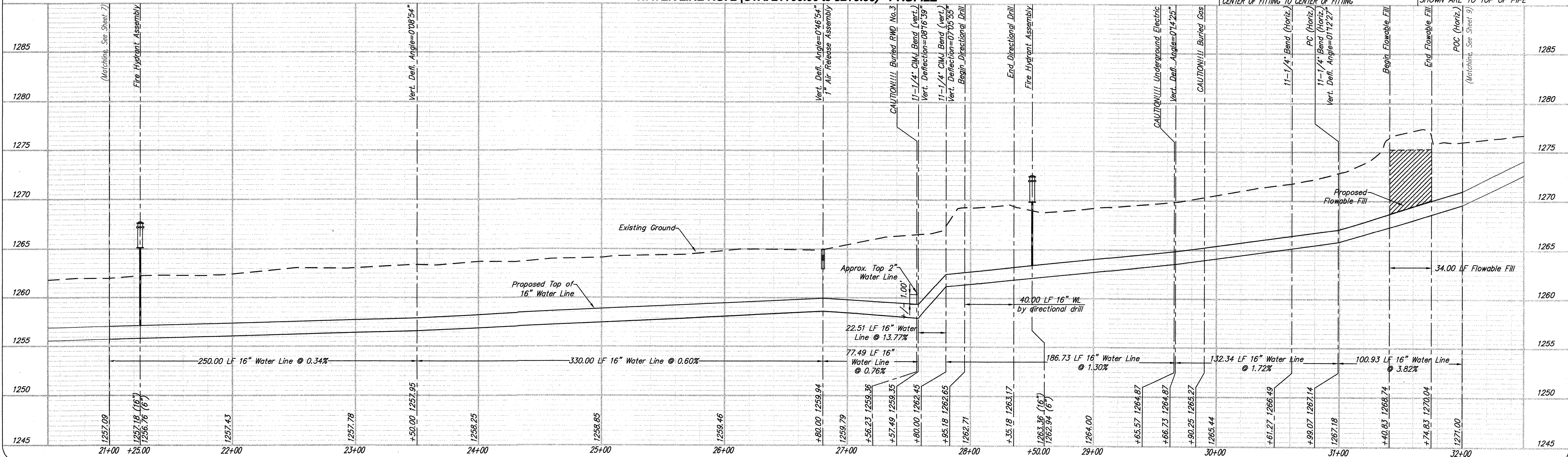
N. 1646140.022, E. 1664672.886 (PC) to  
N. 1646117.170, E. 1664771.190 (POC)  
16" WL Line No. 2, Sta. 30+99.07 (PC)  
to Sta. 32+00.00 (POC)  
Deflect pipe line (Rt.) along 2,909.8-ft.  
radius.



**NOTES:**

- THE CONTRACTOR SHALL USE BEST MANAGEMENT PRACTICES TO CONTROL EROSION AND SEDIMENT DISCHARGE IN ALL DISTURBED AREAS OF CONSTRUCTION. THE CONTRACTOR SHALL PROVIDE ALL NECESSARY MATERIALS, AND EQUIPMENT, AND LABOR TO CONSTRUCT, OPERATE AND MAINTAIN TEMPORARY EROSION AND SEDIMENT CONTROLS DURING CONSTRUCTION.
- THE CONTRACTOR SHALL FIELD VERIFY HORIZONTAL AND VERTICAL LOCATIONS OF ALL EXISTING BURIED UTILITY LINES PRIOR TO CONSTRUCTION. REPORT ANY DISCREPANCIES TO THE ENGINEER.
- ITEMS TO BE SALVAGED TO THE CITY SHALL BE DELIVERED TO THE CITY'S CENTRAL MAINTENANCE FACILITY (CMF) AT 1801 S. McLEAN BLVD.
- THE TOPOGRAPHIC INFORMATION IN THE PLAN VIEW AND "EXISTING GROUND" IN THE PROFILE ARE BASED ON A SURVEY PERFORMED JANUARY 30, 2014.

**WATER LINE NO. 2 (STA. 21+00.00 TO 32+00.00) - PROFILE**



**YOUNG & ASSOCIATES, P.A.**  
Professional Civil Engineering Consultants  
100 S. Geologic, Derby, KS 67037  
Phone: (316) 788-2552 Fax: (316) 788-4408 email: engineering@yga.com

**16" WATER LINE NO. 2 - STA 21+00.00 TO 32+00.00 PLAN & PROFILE**  
63rd Street South 16" Water Main Extension  
City of Wichita  
Sedgewick County, Kansas

scale: as noted  
Design By: RWG  
Drawn By: DSB  
Checked By: CRY  
P/N: 13-348  
Prints Issued:  
Field Check, 2-14-14  
Office Check, 5-9-14  
Final Plans, 10-30-14  
Revisions: