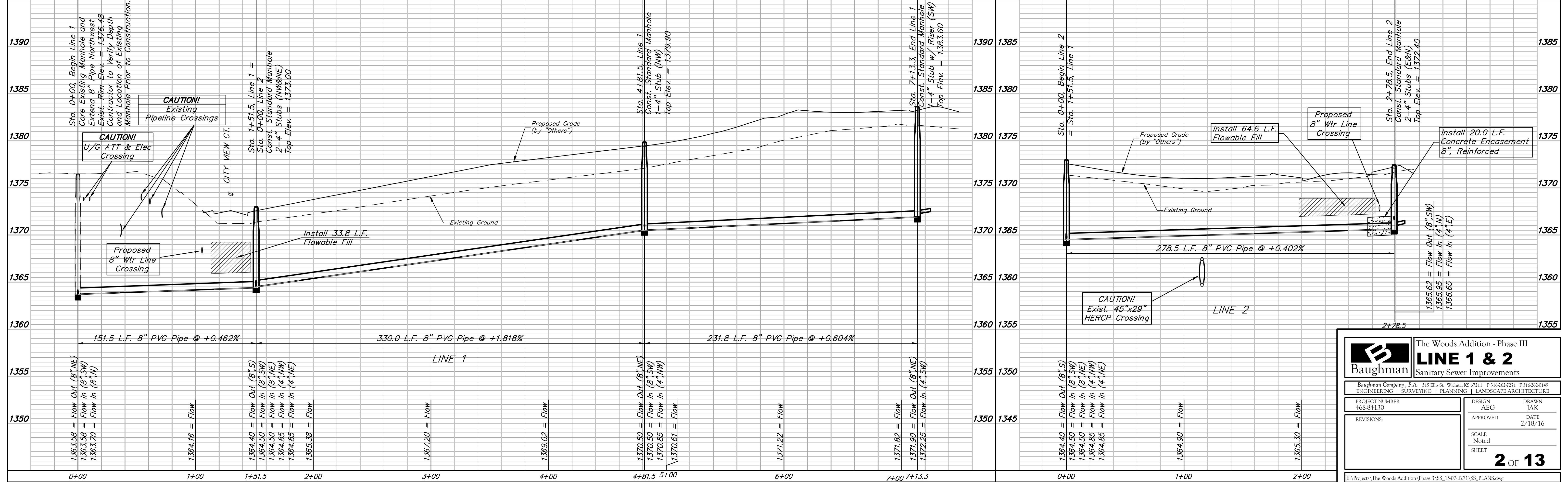
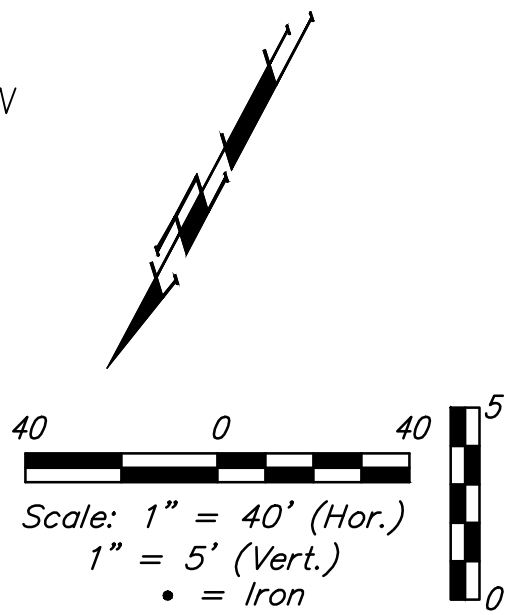
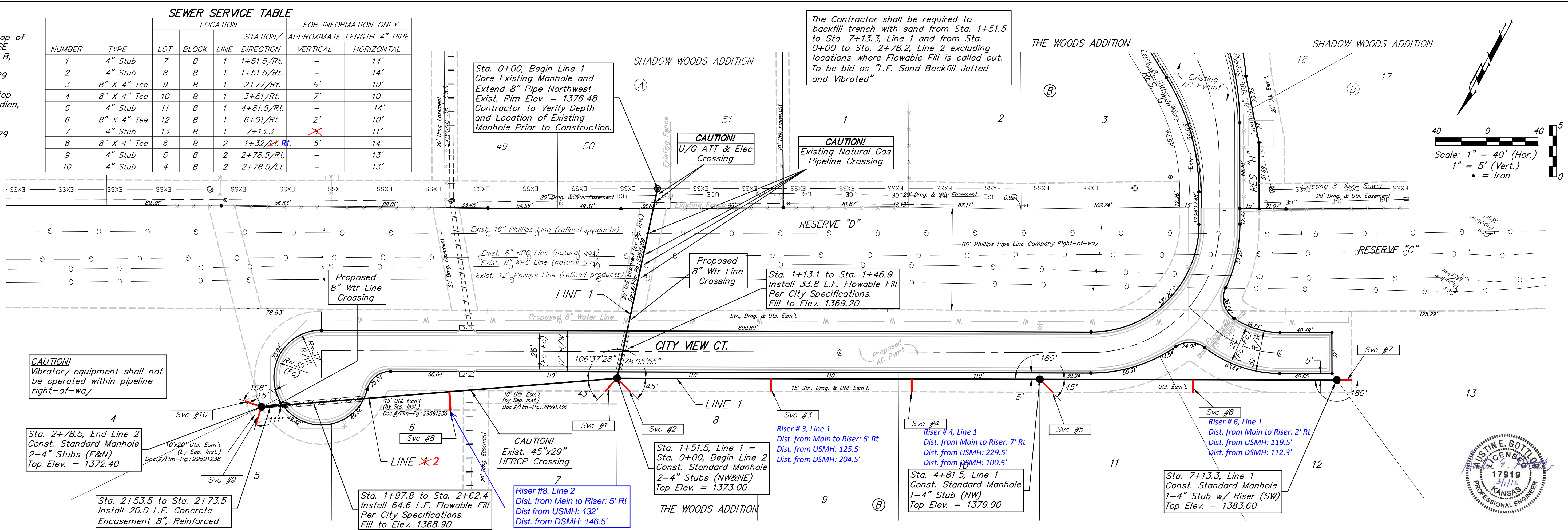


BENCHMARKS:
 BM #1 Square cut in top of curb adjacent to the SE corner of Lot 2, Block B, The Woods Addition
 Elev. = 1381.25 NGVD29

BM #2 Square cut in top of curb NW end of median, Reserve "F"
 The Woods Addition
 Elev. = 1385.54 NGVD29

| SEWER SERVICE TABLE | | | | FOR INFORMATION ONLY | | |
|---------------------|-------------|----------|-------|-----------------------|----------------------------|------------|
| NUMBER | TYPE | LOCATION | | STATION/ DIRECTION | APPROXIMATE LENGTH 4" PIPE | |
| | | LOT | BLOCK | | VERTICAL | HORIZONTAL |
| 1 | 4" Stub | 7 | B | 1+51.5/Rt. | - | 14' |
| 2 | 4" Stub | 8 | B | 1+51.5/Rt. | - | 14' |
| 3 | 8" X 4" Tee | 9 | B | 2+77/Rt. | 6' | 10' |
| 4 | 8" X 4" Tee | 10 | B | 3+81/Rt. | 7' | 10' |
| 5 | 4" Stub | 11 | B | 4+81.5/Rt. | - | 14' |
| 6 | 8" X 4" Tee | 12 | B | 6+01/Rt. | 2' | 10' |
| 7 | 4" Stub | 13 | B | 7+13.3 | 5' | 11' |
| 8 | 8" X 4" Tee | 6 | B | 2+78.5/Rt. | - | 14' |
| 9 | 4" Stub | 5 | B | 2+78.5/Rt. | - | 13' |
| 10 | 4" Stub | 4 | B | 2+78.5/Lt. | - | 13' |

The Contractor shall be required to backfill trench with sand from Sta. 1+51.5 to Sta. 7+13.3, Line 1 and from Sta. 0+00 to Sta. 2+78.2, Line 2 excluding locations where Flowable Fill is called out. To be bid as "L.F. Sand Backfill Jetted and Vibrated"



Baughman The Woods Addition - Phase III
LINE 1 & 2
 Sanitary Sewer Improvements

Baughman Company, P.A. 315 Ellis St. Wichita, KS 67211 P 316-262-7271 F 316-262-0149
 ENGINEERING | SURVEYING | PLANNING | LANDSCAPE ARCHITECTURE

PROJECT NUMBER: 468-84130
 DESIGN: AEG
 DRAWN: JAK
 APPROVED: [Signature]
 DATE: 2/18/16

REVISIONS:

SCALE: Noted
 SHEET: **2 OF 13**

E:\Projects\The Woods Addition\Phase 3\SS 1507-E271\SS_PLANS.dwg