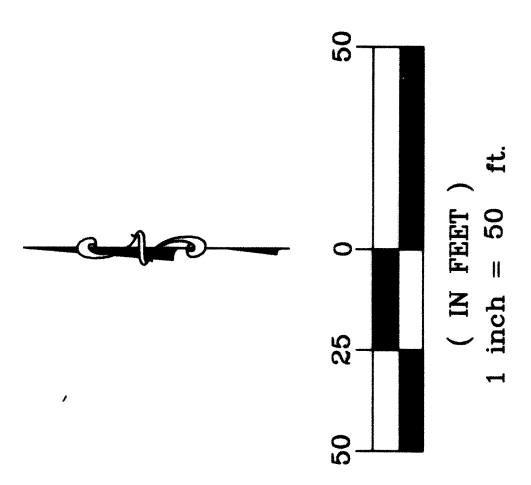
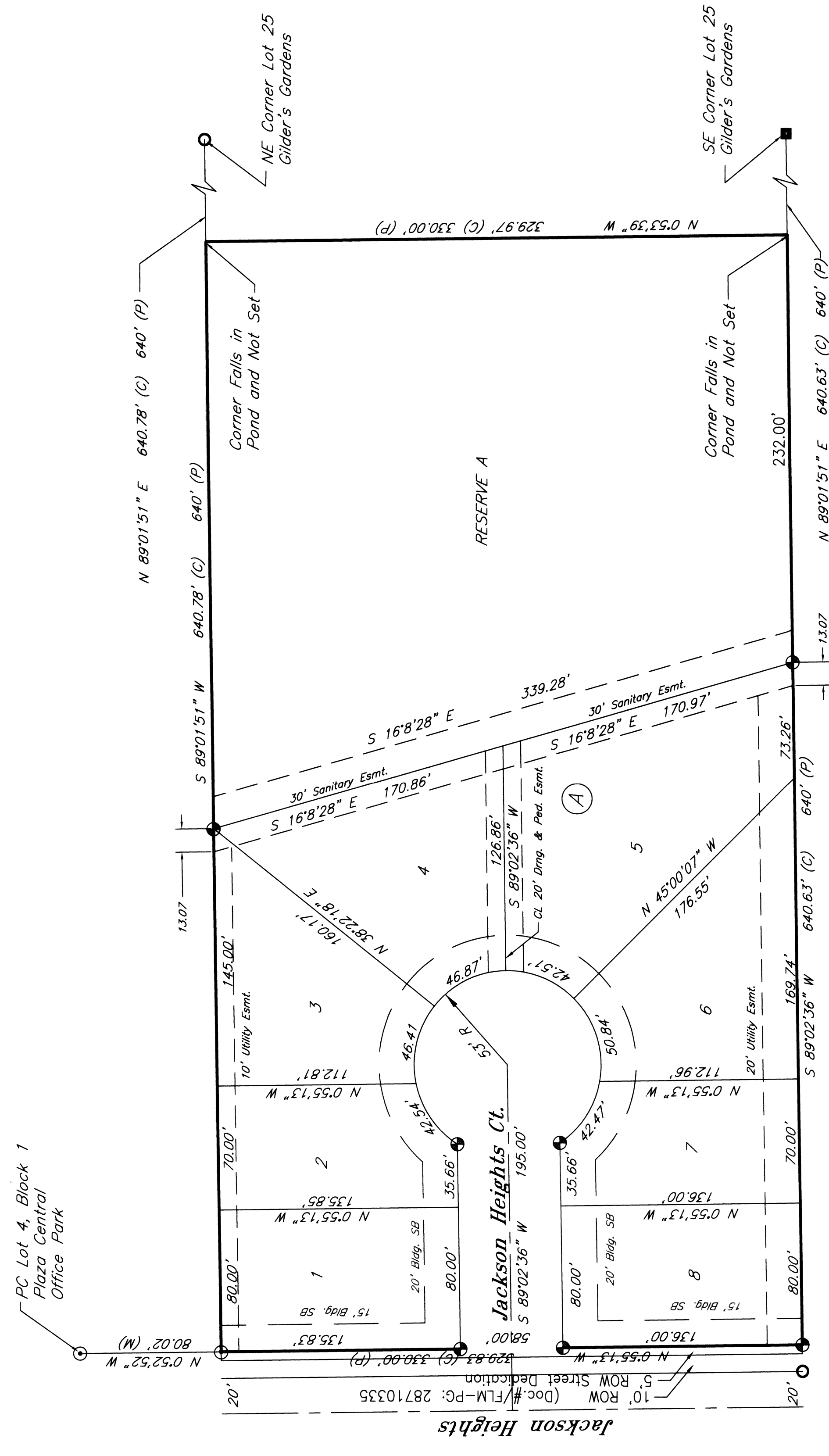


Marinita Addition Replat of Lot 10 Gilder's Gardens Sedgwick County, Kansas

Part of the NE 1/4, Section 22, Township 27 South, Range 2 East of the 6th. P.M.



- PLAT LEGEND**
- 1/2" Rebar (found) Savoy
 - 1/2" Rebar (found) Baughman
 - 1/2" Rebar (found) MKEC
 - ⊙ 3/4" Iron Pipe (found)
 - 1/2" Rebar
 - ⊕ 5/8" Rebar (set) KEMPA CLS #157

Backsight
in and 44 feet
north and 44 feet
west of the northwest corner
of subject property.
Elevation=1354.38 NAVD 88

Minimum Pad Elevations
Lots 1 - 8 shall be at a pad elevation of 1345.50
Base Flood Elevation is 1343.50 (NAVD 88)

State of Kansas }
County of Sedgwick } SS

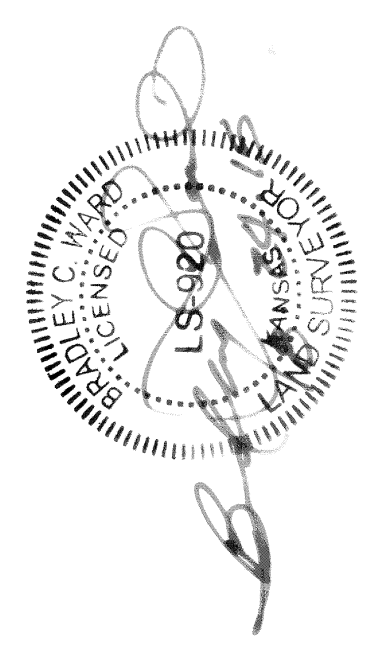
I, Bradley C. Ward, a professional land surveyor of the State of Kansas, hereby certify that the above described tract of land was surveyed on the 20th day of May, 2015, and that the plat hereon is a true and correct copy of the original plat on file in my office, and that all the measurements shown herein actually exist and their positions are correctly shown to the best of my knowledge and belief.

LEGAL DESCRIPTION

A tract of land generally located in the Northeast 1/4 of the Section 22, Township 27 South, Range 2 East, of the Sixth Principal Meridian, Sedgwick County, Kansas being more particularly described as:

A replat of Lot 10, Gilder's Gardens, Sedgwick County, Kansas.

All easements and rights-of-way within said tract are hereby vacated by virtue of KSA 12-512b as amended.



Bradley C. Ward, P.L.S. #920

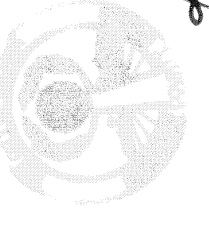
State of Kansas }
City of Wichita } SS

This plat of Marinita Addition, Wichita, Sedgwick County, Kansas, has been submitted to and approved by the Wichita-Sedgwick County Metropolitan Area Planning Commission, Wichita, Kansas. Dated this 20th day of MAY, 2015.

Matthew J. Gpolsky, Chair
W. David Barber, Intern Secretary

State of Kansas }
City of Wichita } SS

This plat approved and all dedications shown hereon accepted by the City Council of the City of Wichita, Kansas, this 15 day of September, 2015.



At the Direction of the City Council
Jeff Longwell, Mayor
Karen Sublett, City Clerk



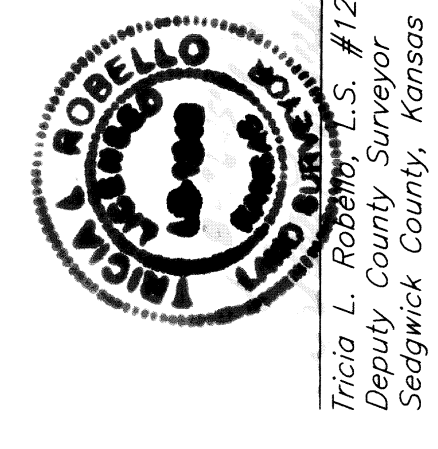
Entered on transfer record this 20th day of September, 2015.
Kelly B. Arnold, County Clerk

State of Kansas }
County of Sedgwick } SS

This is to certify that this plat has been filed for record in the Office of the Register of Deeds this 20th day of September, 2015, at 3:56:19 o'clock P.M.

Bill Meek, Register of Deeds
Tonya Buckingham, Deputy

Reviewed in accordance with K.S.A. 58-2005 on this ___ day of ___ 2015.



Tricia L. Rozbicki, L.S. #1246
Deputy County Surveyor
Sedgwick County, Kansas

Register of Deeds
Sedgwick County
Doc #/FLM-PG: 28710335
Recording Fee: \$23.00
Date Recorded: 09/28/2015 03:53:16 PM
Authorized By: _____

This instrument was acknowledged before me on this 24th day of August, 2015, by John Greenstreet, Manager, Marinita, LLC

John Greenstreet, Manager
Marinita, LLC
My Commission Expires: 11-18-17

State of Kansas }
County of Sedgwick } SS

117 E. Lewis, Wichita, KS 67202 (316)264-0242