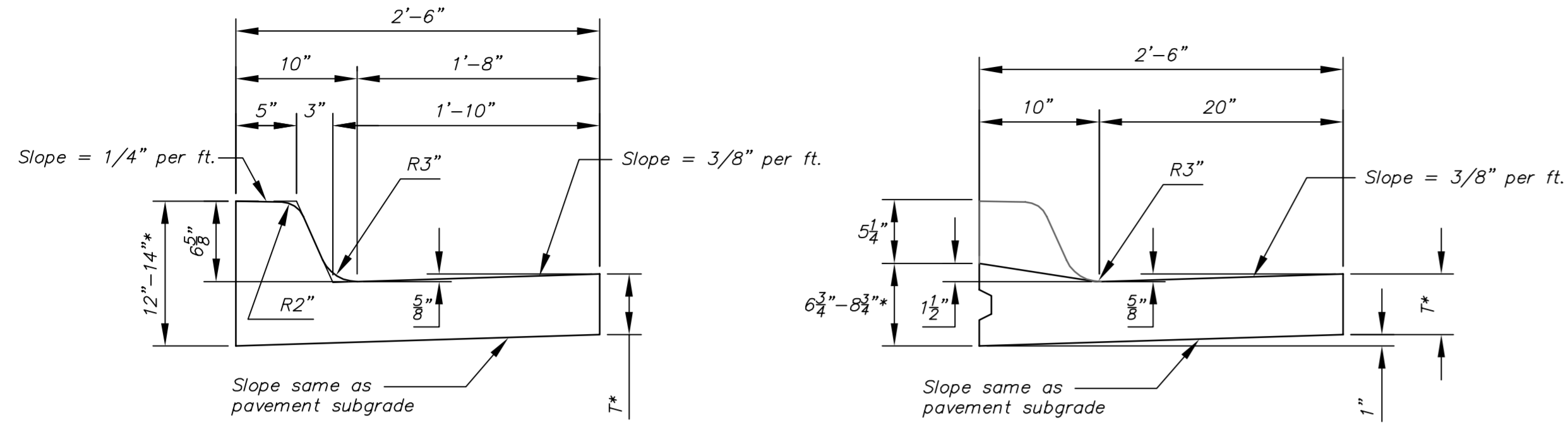


TYPE 4  
(Residential curb)

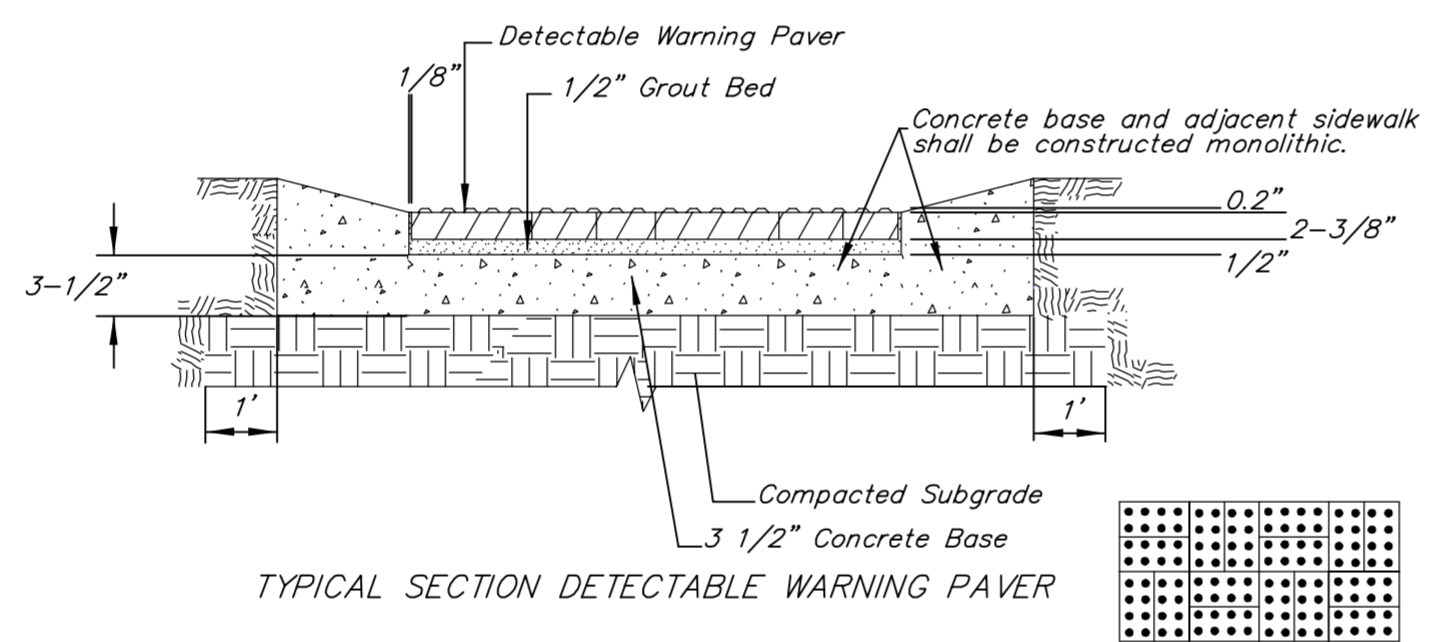
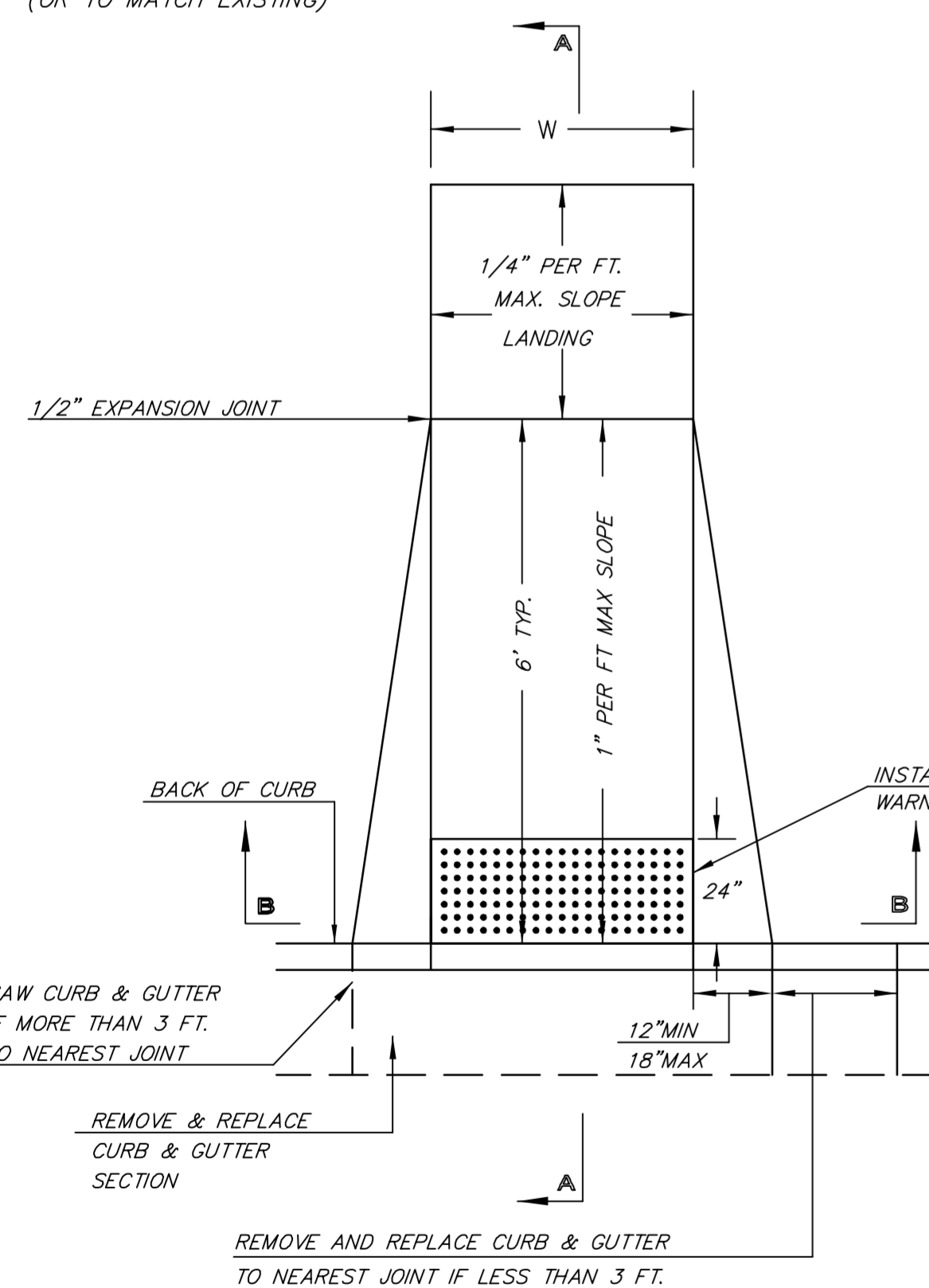


Combined Curb & Gutter (6 5/8")

Combined Curb & Gutter (1 1/2")

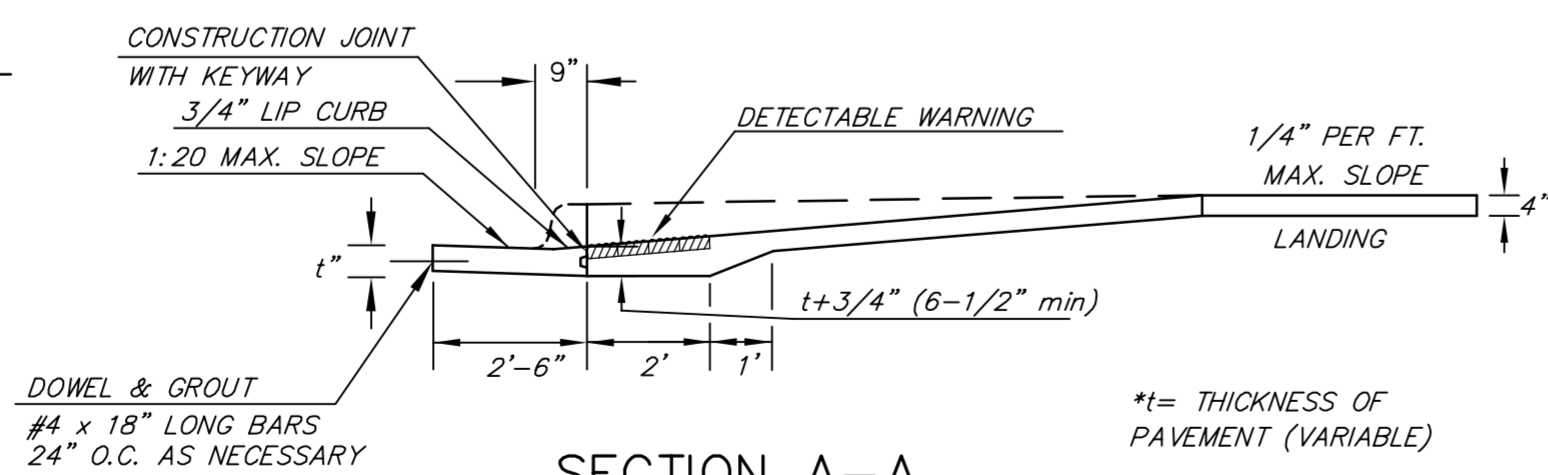
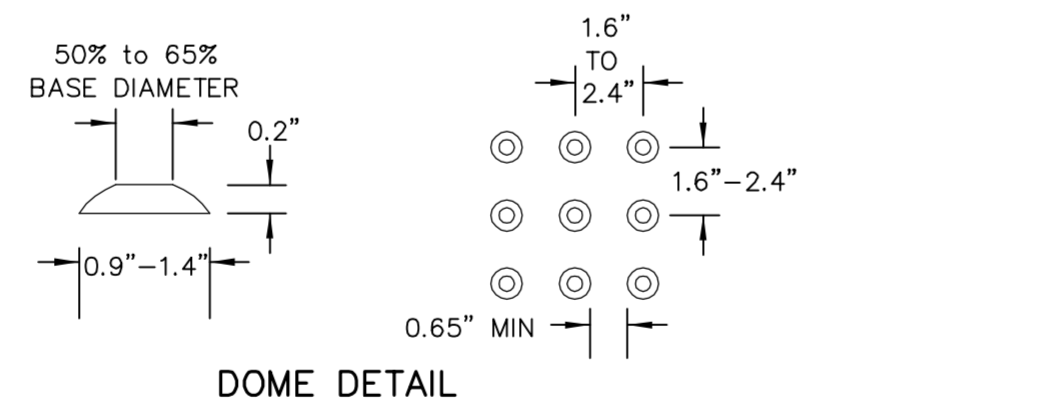
(TYPE A)  
STANDARD WHEELCHAIR RAMP WITH  
DETECTABLE WARNING  
CONSTRUCTION DETAIL FOR STREETS  
WITH COMBINED CURB & GUTTER

W= 4'0" FOR STANDARD RAMP  
W= 5'0" FOR RAMPS AT SCHOOL CROSSWALKS  
(OR TO MATCH EXISTING)



NOTE: RAMPS TO COMPLY WITH LATEST ADAAG GUIDELINES. PAVESTONE DETECTABLE WARNING PAVERS (OR AN APPROVED EQUAL) SHALL BE USED IN ALL WHEELCHAIR RAMPS. THE RED PAVER SHALL BE INSTALLED USING A BASKET WEAVE/PARQUET PATTERN. OTHER PATTERNS MAY BE USED WITH APPROVAL OF ENGINEER. SAND FILL JOINTS. ALIGN DOMES IN THE DIRECTION OF PEDESTRIAN TRAVEL.

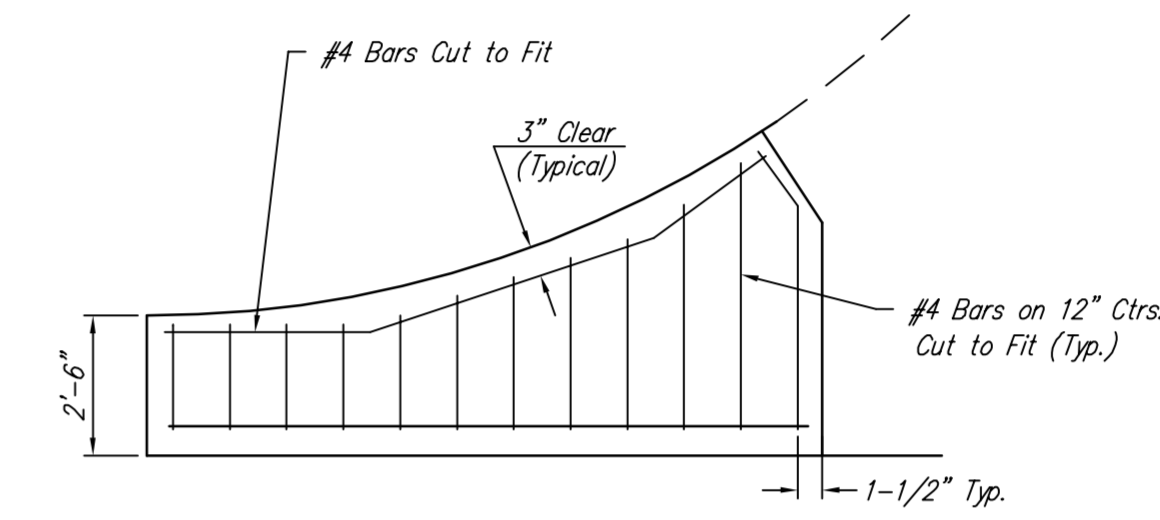
SECTION B-B



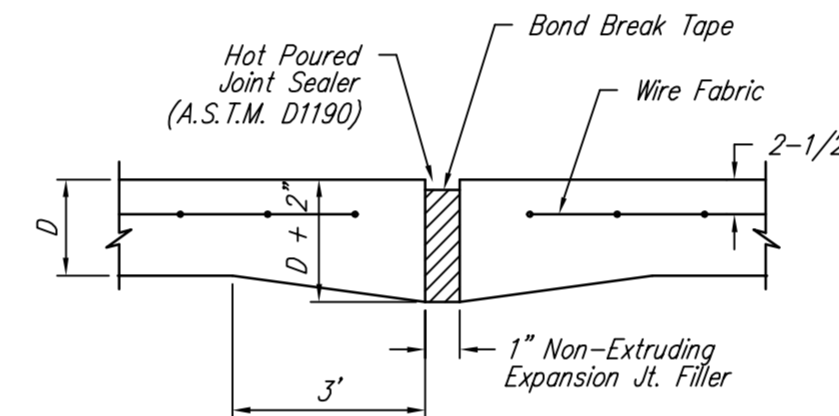
SECTION A-A

\*t= THICKNESS OF PAVEMENT (VARIABLE)

AUGUST 4, 2003

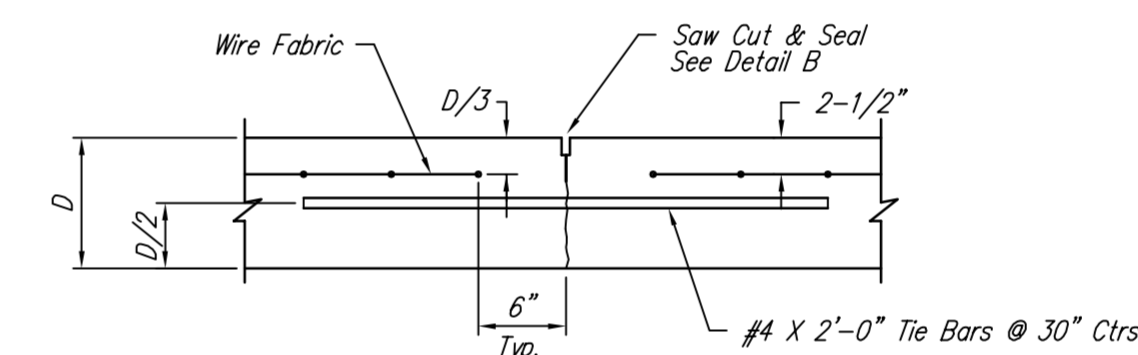


WING REINFORCING DETAIL

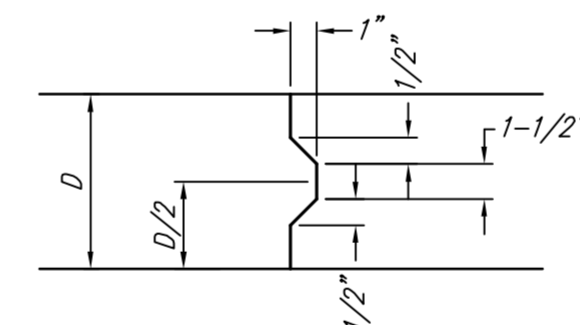


EXPANSION JOINT

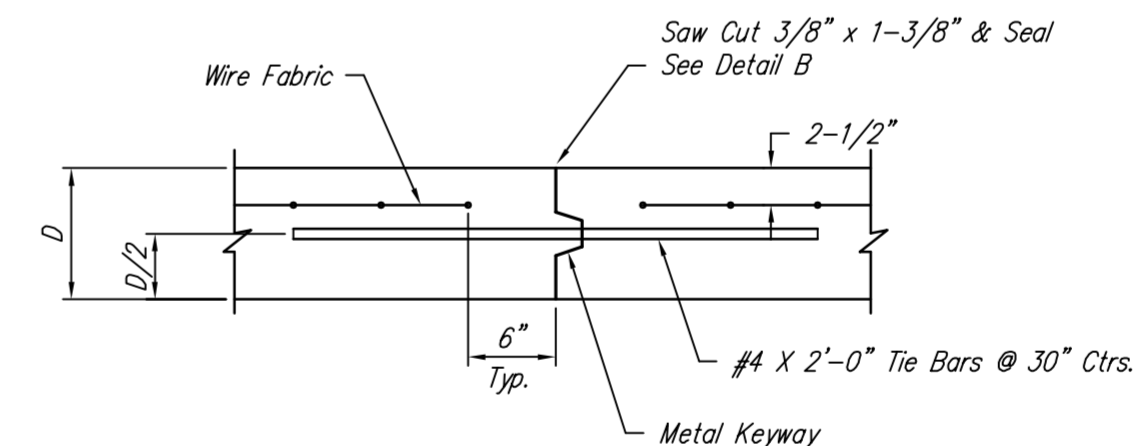
NOTE: Extra Thickness to be Subsidiary to Price of Square Yards Pavement



LONGITUDINAL JOINT DETAIL (L.J.)

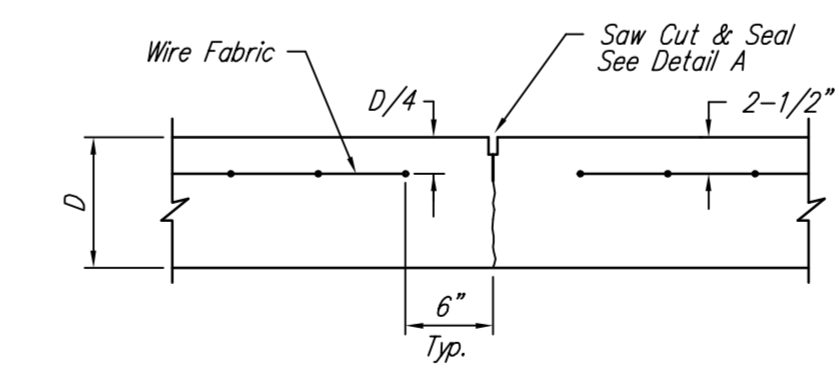


KEYWAY DETAIL

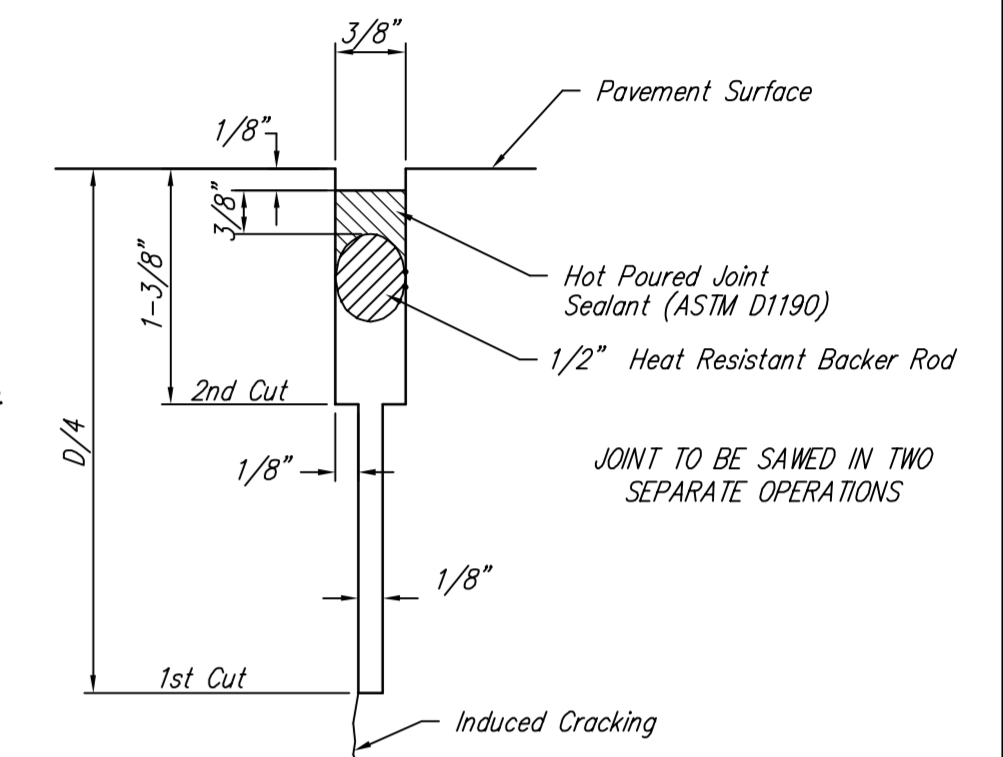


OPTIONAL LONGITUDINAL JOINT DETAIL (L.J.)  
(CONSTRUCTION JOINT)

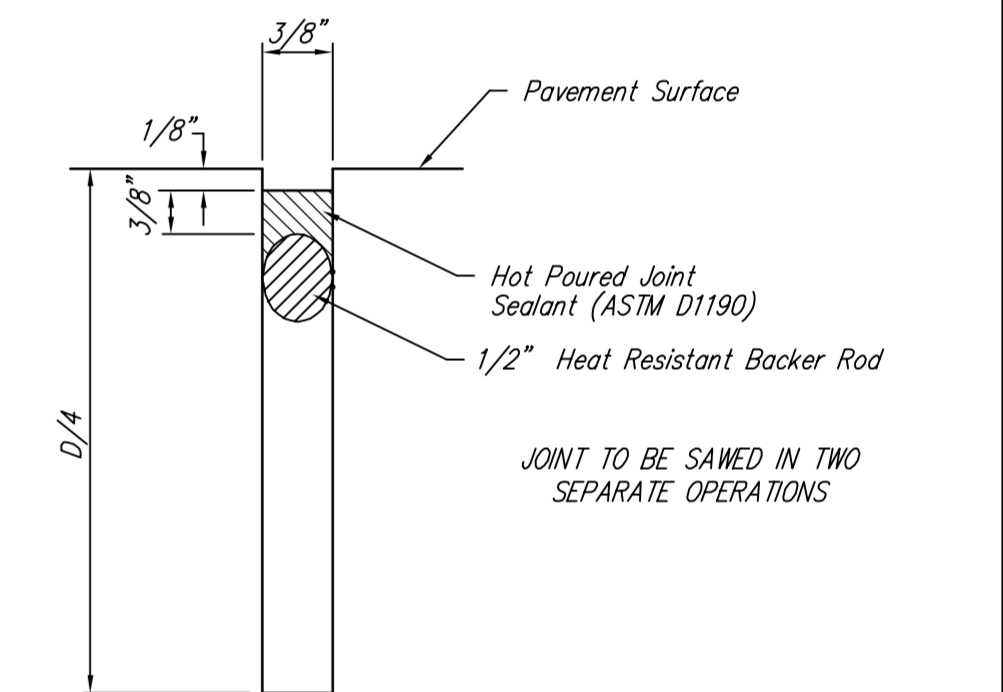
NOTE: 6" X 12" W4XW4 Wire Fabric Reinforcing Shall Be Placed So That The Wires With The 6" Spacing Will Run Parallel With The Longitudinal Joints.



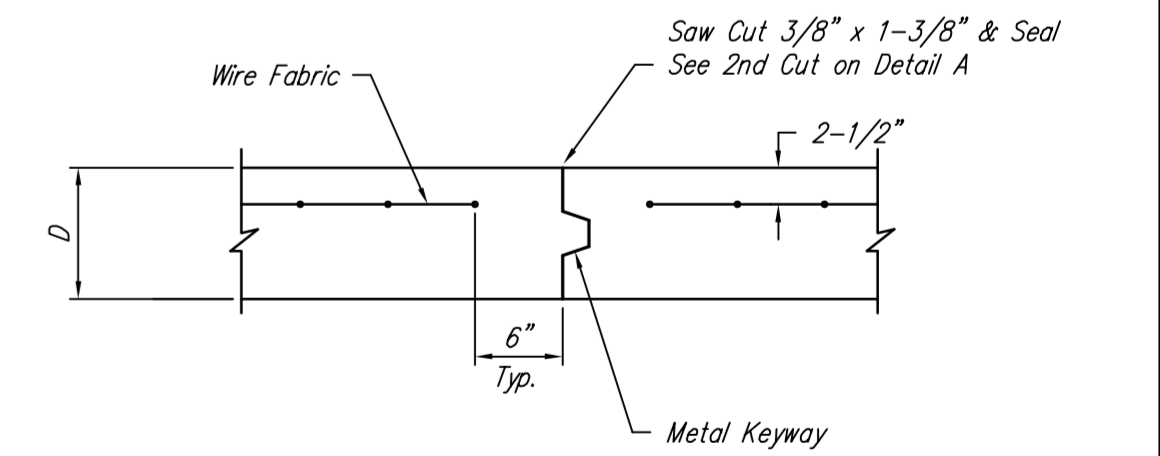
CONTRACTION JOINT DETAIL (C.J.)



SAW JOINT DETAIL "A"



SAW JOINT DETAIL "B"



OPTIONAL CONTRACTION JOINT  
(CONSTRUCTION JOINT)

Drawing File: E:\Projects\Elm & Elder\Details\WCR & Curb Details.dwg

Project No. 1507E267 CAPITOL IMPROVEMENT PROJECT

Design: CoW  
Drawn: CoW  
Approved: CoW  
Scale: NOTED

WHEELCHAIR RAMP & CURB DETAILS

ELM AND ELDER PAVING PROJECT

**Baughman Company, P.A.**  
315 Ellis St. Wichita, KS 67211 P 316.262.7271 F 316.262.0149  
ENGINEERING | SURVEYING | PLANNING | LANDSCAPE ARCHITECTURE

March 2016

SHEET  
OF  
5  
30