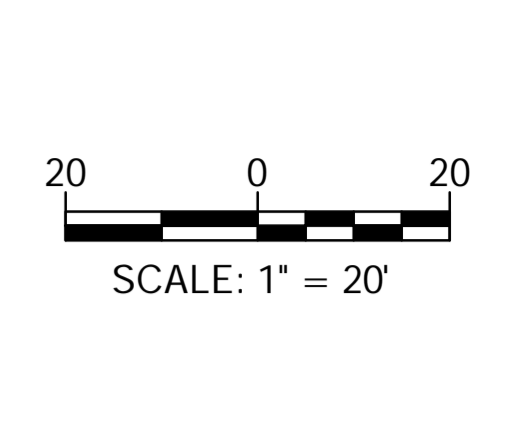
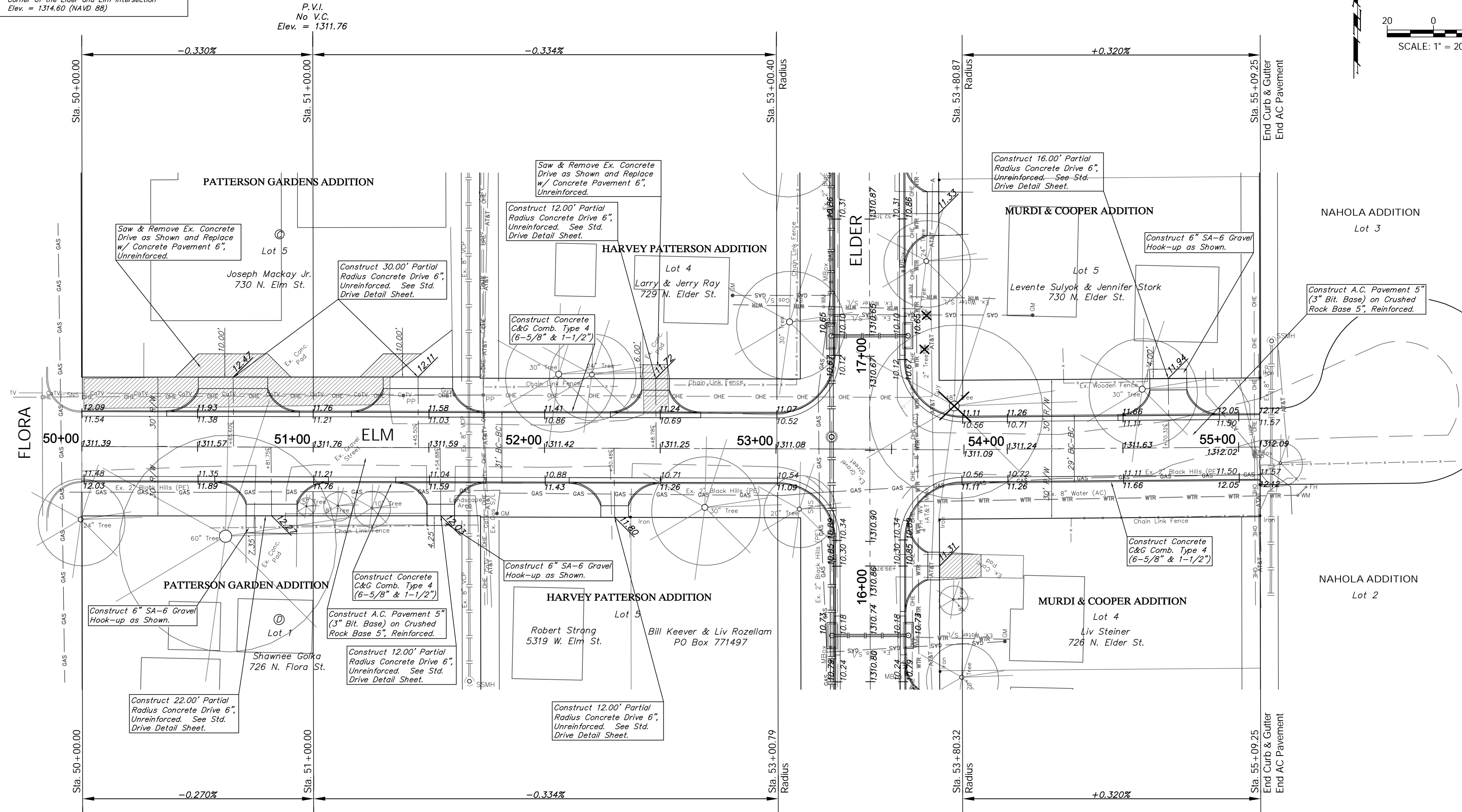


**BENCHMARKS:**  
 BM #2 - Top Nut on the Fire Hydrant at the Southeast Corner of the Elder and Elm Intersection  
 Elev. = 1314.60 (NAVD 88)



P.V.I.  
 No V.C.  
 Elev. = 1311.76

P.V.I.  
 No V.C.  
 Elev. = 1311.76



**Note:**  
 Pavement, Sidewalks, and Etc. To Be Removed Are Indicated By:

**Note:**  
 Trees/Shrubs to be removed are marked thus:

Drawing File: E:\Projects\Elm & Elder\Civil 3d\Base Map.dwg (Pav 04)  
 Design: TPV  
 Drawn: LP  
 Approved: TPV  
 Scale: Noted

Project No. 15-07-E267 CAPITAL IMPROVEMENT PROJECT  
**ELM STREET PAVING**  
 Sta. 50+00.00 to Sta. 55+09.25  
 ELM AND ELDER PAVING PROJECT

**Baughman Company, P.A.**  
 315 Ellis St., Wichita, KS 67211 P 316.262.7271 F 316.262.0149  
 ENGINEERING | SURVEYING | PLANNING | LANDSCAPE ARCHITECTURE

March 2016  
 SHEET  
**10**  
 OF  
**30**