

GENERAL NOTES:

1. CONTRACTOR WILL BE REQUIRED TO PROVIDE NOTICE TO UTILITY COMPANIES A MINIMUM OF FORTY-EIGHT (48) HOURS PRIOR TO ANY EXCAVATION, AS FOLLOWS:

KANSAS ONE-CALL 687-2470

THE CONTRACTOR MUST NOTIFY THE FOLLOWING IN CASE OF AN EMERGENCY:

COX COMMUNICATIONS 262-4270
 KANSAS GAS SERVICE 1-888-482-4950
 WESTAR ENERGY 383-8650
 AQUILA ENERGY 1-800-303-0357
 AT&T 268-2245
 CITY OF WICHITA WATER DEPT. 268-4563
 CITY OF WICHITA SEWER MAINT. 268-4024
 CITY OF WICHITA STORM SEWER MAINT. 268-4090
 CITY OF WICHITA TRAFFIC MAINT. 268-4034
 CONOCO PHILLIPS PIPELINE CO. 1-877-267-2290
 SOUTHERN STAR PIPELINE CO. 529-6600
 KINDER-MORGAN PIPELINE CO. 1-888-844-5658

2. UTILITY SERVICE LINES, POLES, VALVE BOXES, METERS, AND ETCETERA ARE TO BE ADJUSTED AS NECESSARY BY OTHERS PRIOR TO CONSTRUCTION UNLESS THE PLANS SPECIFICALLY CALL FOR THEIR ADJUSTMENT BY THE CONTRACTOR OR UNLESS THE PLANS SPECIFICALLY IDENTIFY A UTILITY TO BE ADJUSTED BY ITS OWNER DURING CONSTRUCTION. EXISTING UTILITIES AND THEIR LOCATION, AS SHOWN ON THE PLANS, REPRESENT THE BEST INFORMATION OBTAINABLE FOR DESIGN. THE CONTRACTOR WILL BE REQUIRED TO WORK AROUND EXISTING UTILITIES WITHIN THE RIGHT-OF-WAY WHICH DO NOT CONFLICT WITH PROPOSED CONSTRUCTION.

3. RUBBLE FROM THE REMOVAL OF MISCELLANEOUS STRUCTURES AND EXCESS EXCAVATION WHICH IS TO BE WASTED SHALL BE DISPOSED OF ON SITES TO BE PROVIDED BY THE CONTRACTOR. THESE SITES SHALL BE APPROVED BY THE ENGINEER AS TO SUITABILITY, APPEARANCE AND SITE LOCATION. LOCATIONS, IN THE OPINION OF THE ENGINEER, THAT WILL LEAVE AN UNSIGHTLY APPEARANCE WILL NOT BE APPROVED. ALL DISPOSAL SITES MUST BE APPROVED BY THE KANSAS DEPARTMENT OF HEALTH AND ENVIRONMENT. MATERIAL EITHER STOCKPILED OR DISPOSED OF IN A FLOOD PLAIN WOULD REQUIRE A KANSAS STATE BOARD OF AGRICULTURE PERMIT. ANY MATERIAL DUMPED IN WATERS OF THE UNITED STATES OR WETLANDS IS SUBJECT TO U.S. CORPS. OF ENGINEERS PERMITTING REGULATIONS. ANY MATERIAL BURIED OR STOCKPILED BEYOND APPROVED CONSTRUCTION LIMITS WOULD REQUIRE ADDITIONAL ARCHAEOLOGICAL INVESTIGATIONS UNLESS BURIED IN A PREVIOUSLY APPROVED BORROW LOCATION.

4. TREES AND SHRUBS IN THE WORK AREA WHICH ARE IN DIRECT CONFLICT WITH PROPOSED NEW CONSTRUCTION SHALL BE REMOVED BY THE CONTRACTOR ONLY WITH THE DEVELOPER OR KAW VALLEY ENGINEERING APPROVAL. TREES AND SHRUBS WHICH ARE NOT IN DIRECT CONFLICT WITH PROPOSED NEW CONSTRUCTION SHALL BE SAVED AND PROTECTED FROM DAMAGE. AN ON-SITE PRE-CONSTRUCTION MEETING WILL OCCUR PRIOR TO ANY CONSTRUCTION TO DISCUSS TREE REMOVAL AND TREE PROTECTION.

5. THE CONTRACTOR SHALL GIVE ALL PROPERTY OWNERS AND/OR TENANTS OF DEVELOPED PROPERTY ABUTTING THE CONSTRUCTION OF THIS PROJECT A MINIMUM OF TEN (10) DAYS NOTICE PRIOR TO START OF CONSTRUCTION.

6. THE CONTRACTOR SHALL BE RESPONSIBLE FOR PRESERVING PROPERTY IRONS. THE CONTRACTOR WILL BE REQUIRED TO RE-ESTABLISH ANY PROPERTY IRONS WHICH ARE DAMAGED OR DESTROYED BY HIS CONSTRUCTION OPERATIONS. SUCH IRONS SHALL BE RE-ESTABLISHED BY A LICENSED LAND SURVEYOR IN ACCORDANCE WITH STATE LAWS.

7. ALL EXISTING AND PROPOSED EROSION CONTROL MEASURES INCLUDING SILT FENCING, EROSION CONTROL MAT, STRAW BALES, INLET BARRIERS, AND CONST. ENTRANCE SHALL BE MAINTAINED THROUGHOUT CONSTRUCTION BY THE CONTRACTOR AND UNTIL PROJECT IS ACCEPTED BY THE CITY OF WICHITA. THE ON-SITE ENGINEER SHALL COMPLETE WEEKLY REPORTS ON THE STATUS OF EROSION CONTROL MEASURES. THE CONTRACTOR SHALL BE REQUIRED TO COMPLY WITH MAINTENANCE AND/OR REPLACEMENT OF EROSION CONTROL MEASURES AS DETERMINED BY THE ON-SITE ENGINEER UNTIL PROJECT IS ACCEPTED BY CITY OF WICHITA. MAINTENANCE AND/OR REPLACEMENT OF EROSION CONTROL MEASURES TO BE PAID BY L.S. BID ITEM "MAINTAIN EXISTING BMP'S."

8. ALL EXCESS EXCAVATION SHALL REMAIN ON-SITE AND SHALL BE STOCKPILED OR SPREAD AT A LOCATION DETERMINED BY THE ENGINEER.

9. ALL AREAS DISTURBED DURING CONSTRUCTION WITHIN EXISTING SODDED AREAS SHALL BE RE-SODDED TO MATCH EXISTING SOD TYPE. IN AREAS WITH NO EXISTING TURF GRASS, CONTRACTOR TO SEED, MULCH, AND FERTILIZE AS FOLLOWS (PERMANENT SEEDING):

SEED: KANSAS PREMIUM FESCUE BLEND: 8 LBS./1000 SQ. FT.
 MULCH: PRAIRIE HAY: 2 TONS/ACRE
 FERTILIZER: 12-24-12: 850 LBS./ACRE

ALL OTHER AREAS DISTURBED DURING CONSTRUCTION SHALL BE SEEDDED AS FOLLOWS (TEMPORARY SEEDING):

SEED: RYE GRASS (PLS)--5 LBS./1000 SQ. FT.

ALL COSTS ASSOCIATED WITH SEEDING, MULCHING, AND FERTILIZING SHALL BE INCLUDED IN BID ITEM "SEEDING". ALL SEEDING OPERATIONS SHALL CONFORM TO THE CITY OF WICHITA STANDARD SPECIFICATIONS.

BENCHMARKS:

BM #1: CHISELED "V-NOTCH" AT THE N.W. CORNER OF LOT 1, BLOCK 1, NAHOLA ADDITION.
 ELEV. = 1312.10 (NAVD88)

BM #2: SQUARE CUT ON EDGE OF CONCRETE 4.7' N OF THE N.E. CORNER OF BUILDING NO. 5223 ON LOT 2, BLOCK 1, NAHOLA ADDITION.
 ELEV. = 1311.71 (NAVD88)

SAFETY NOTICE TO CONTRACTOR

IN ACCORDANCE WITH GENERALLY ACCEPTED CONSTRUCTION PRACTICES, THE CONTRACTOR WILL BE SOLELY AND COMPLETELY RESPONSIBLE FOR CONDITIONS OF THE JOB SITE, INCLUDING SAFETY OF ALL PERSONS AND PROPERTY DURING PERFORMANCE OF THE WORK. THIS REQUIREMENT WILL APPLY CONTINUOUSLY AND NOT BE LIMITED TO NORMAL WORKING HOURS.

WARRANTY / DISCLAIMER

THE DESIGNS REPRESENTED IN THESE PLANS ARE IN ACCORDANCE WITH ESTABLISHED PRACTICES OF CIVIL ENGINEERING FOR THE DESIGN FUNCTIONS AND USES INTENDED BY THE OWNER AT THIS TIME. HOWEVER, NEITHER KAW VALLEY ENGINEERING, INC NOR ITS PERSONNEL CAN OR DO WE WARRANT THESE DESIGNS OR PLANS AS CONSTRUCTED, EXCEPT IN THE SPECIFIC CASES WHERE KAW VALLEY ENGINEERING PERSONNEL INSPECT AND CONTROL THE PHYSICAL CONSTRUCTION ON A CONTEMPORARY BASIS AT THE SITE.

CAUTION - NOTICE TO CONTRACTOR

THE CONTRACTOR IS SPECIFICALLY CAUTIONED THAT THE LOCATION AND/OR ELEVATION OF EXISTING UTILITIES AS SHOWN ON THESE PLANS IS BASED ON RECORDS OF THE VARIOUS UTILITY COMPANIES AND, WHERE POSSIBLE, MEASUREMENTS TAKEN IN THE FIELD. THE INFORMATION IS NOT TO BE RELIED ON AS BEING EXACT OR COMPLETE. THE CONTRACTOR MUST CALL THE APPROPRIATE UTILITY COMPANY AT LEAST 72 HOURS BEFORE ANY EXCAVATION TO REQUEST EXACT FIELD LOCATION OF UTILITIES. IT SHALL BE THE RESPONSIBILITY OF THE CONTRACTOR TO RELOCATE ALL EXISTING UTILITIES WHICH CONFLICT WITH PROPOSED IMPROVEMENTS SHOWN ON THE PLANS.

THE CONTRACTOR SHALL EXPOSE EXISTING UTILITIES AT LOCATIONS OF POSSIBLE CONFLICTS PRIOR TO ANY CONSTRUCTION.

STORMWATER SEWER #702

TO SERVE

LOTS 1&2, BLOCK 1 OF NAHOLA ADDITION

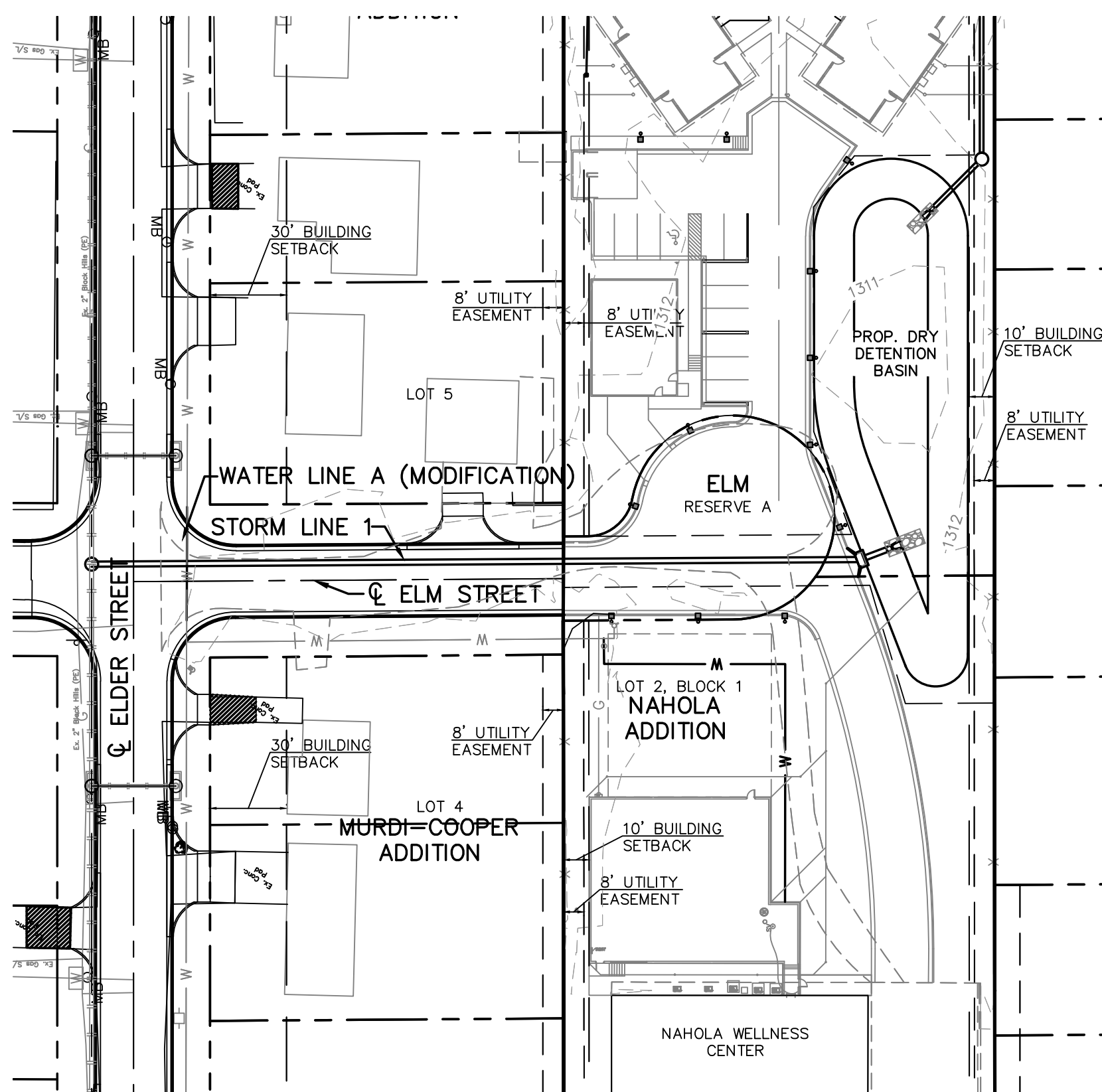
5223 WEST ELM CIRCLE

CITY OF WICHITA, KANSAS

GARY JANZEN, P.E. - CITY ENGINEER

PROJECT NUMBER 468-85082

O.C.A. NUMBER 751543

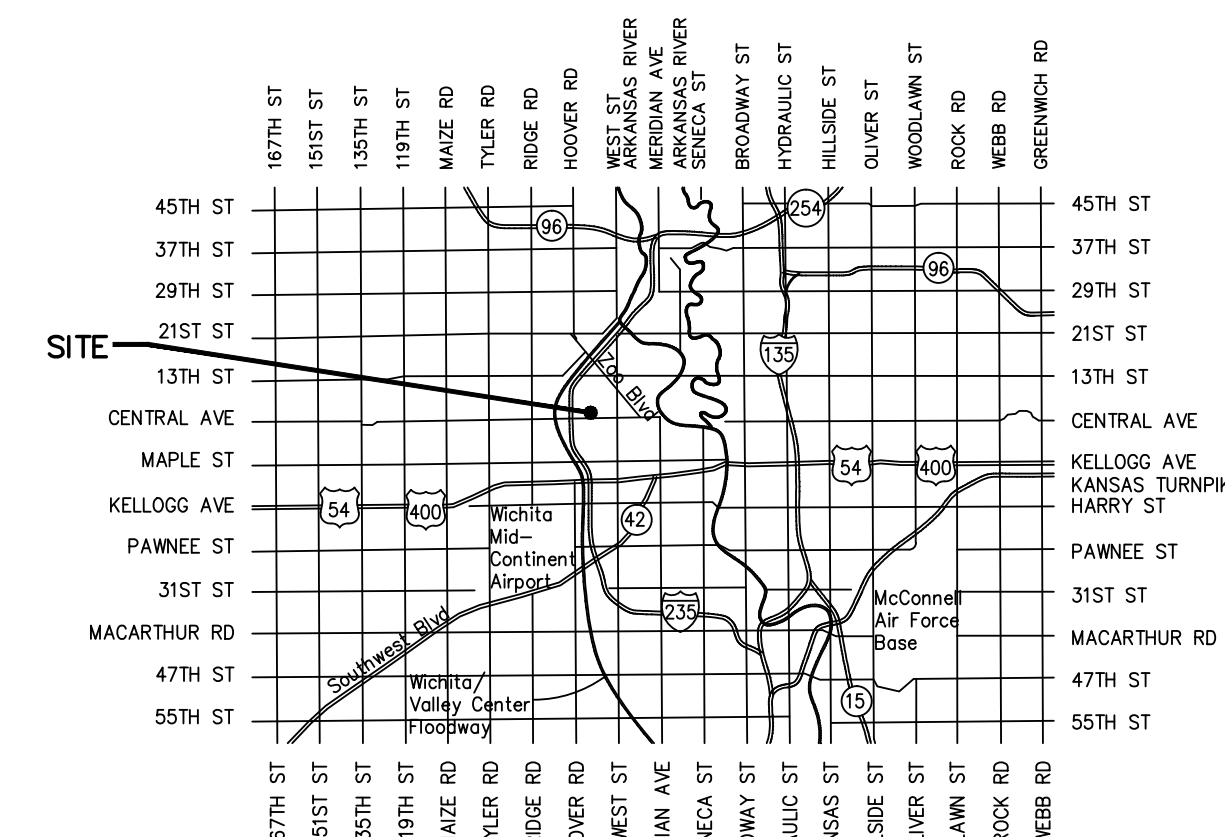
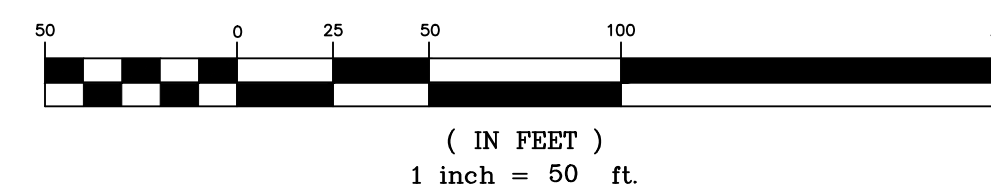


SHEET INDEX:

TITLE SHEET	1
STORM SEWER PLAN & PROFILE	2
STORM SEWER DETAILS	3-6
WATER PLAN & PROFILE	7
WATER DETAILS	8-9
GRADING PLAN	10-11
REMOVAL PLAN	12
EROSION CONTROL PLAN	13-14
EROSION CONTROL BMP DETAILS	15-19
PLAT	20

THE COORDINATES PROVIDED IN THESE PLANS ARE FOR INFORMATION AND CHECKING PURPOSES ONLY. IT IS THE CONTRACTOR'S RESPONSIBILITY TO CALCULATE CONSTRUCTION STAKING COORDINATES ACCORDING TO THE DIMENSIONS SHOWN ON THESE PLANS. CONTRACTOR SHALL VERIFY THE ACCURACY OF THE COORDINATES SHOWN IN THE TABLE HEREON BEFORE CONSTRUCTION.

GRAPHIC SCALE



VICINITY MAP

STORMWATER CERTIFICATION:

NEW DEVELOPMENT

THESE CONSTRUCTION PLANS WERE PREPARED IN ACCORDANCE WITH THE CURRENT STORMWATER MANAGEMENT REGULATIONS AS SET FORTH IN THE CITY OF WICHITA'S STORMWATER MANAGEMENT ORDINANCE 16.32 AND THE POLICIES/GUIDELINES PRESENTED IN THE WICHITA/SEDGWICK COUNTY STORMWATER MANUAL.

DISTURBED AREA = 145,305 SF (3.34 ACRES ±)
 WATER QUALITY TREATMENT: SNOOT BMP AND DRY DETENTION BASIN
 DOWNSTREAM CHANNEL PROTECTION: N/A
 DETENTION: DRY POND
 THE BMP USED FOR THIS DEVELOPMENT IS: SNOOT BMP, SILT FENCE, INLET SEDIMENTATION BARRIERS.

Existing Conditions (24-Hour Storm)		1-Year	2-Year	5-Year	10-Year	25-Year	100-Year
Site							
Combined Runoff	0.00	3.83	8.69	13.39	21.43	33.38	

Proposed Conditions (24-Hour Storm)		1-Year	2-Year	5-Year	10-Year	25-Year	100-Year
Site							
Combined Discharge	0.00	3.14	6.86	10.45	14.34	25.65	

MARCH 2016



PROJ. NO. G14_0066 DSN: SRS
 CFN: 0066DTS DWN: EAM

200 N. EMPORIA, SUITE 100
 WICHITA, KANSAS 67202
 PH. (316) 440-4304 | FAX (316) 440-4309
 wh@kveg.com | www.kveg.com

KAW VALLEY ENGINEERING

KAW VALLEY ENGINEERING, INC. IS AUTHORIZED TO OFFER ENGINEERING SERVICES BY KANSAS STATE CERTIFICATE OF AUTHORIZATION # E-113. EXPIRES 12/31/16