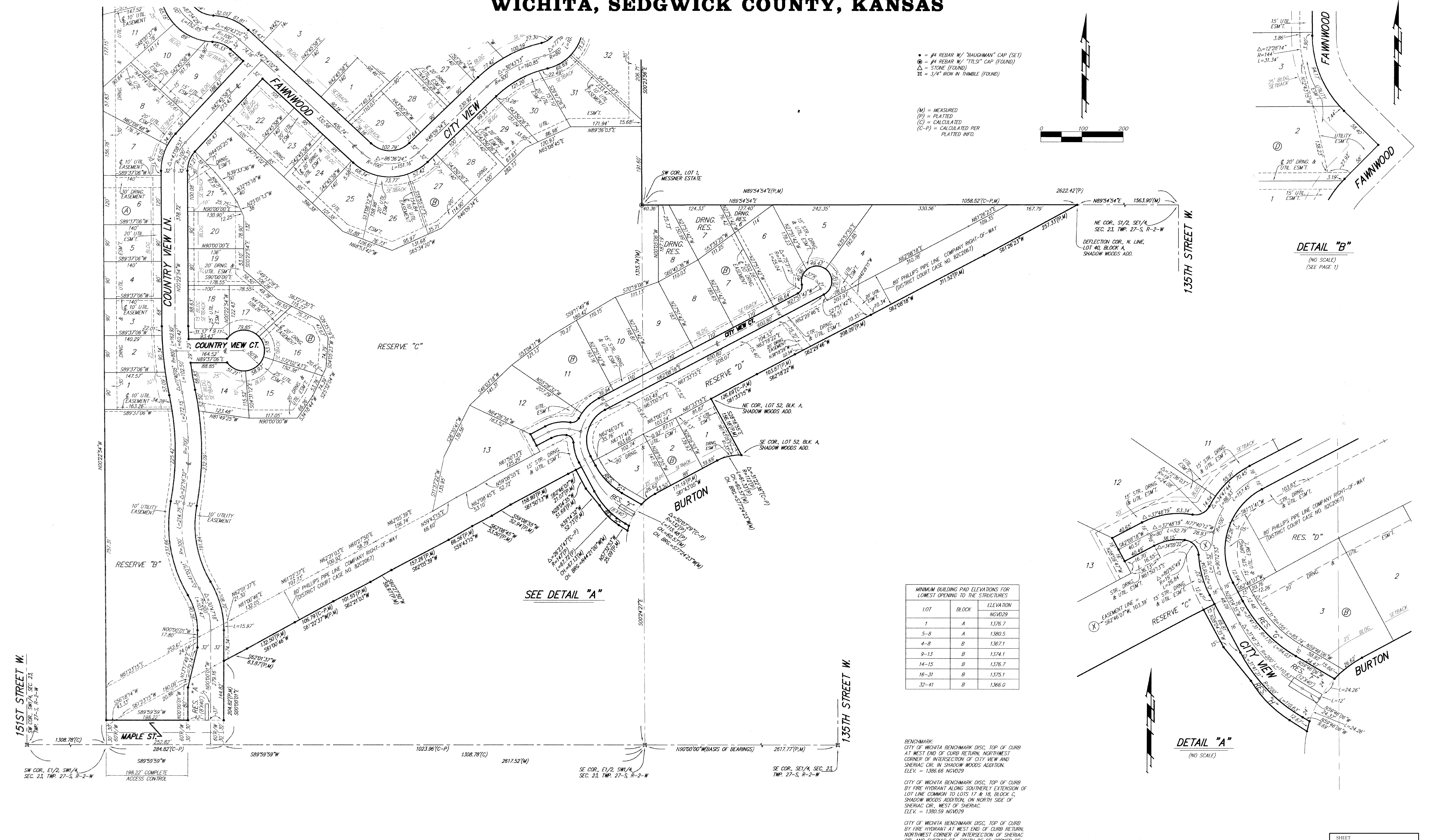
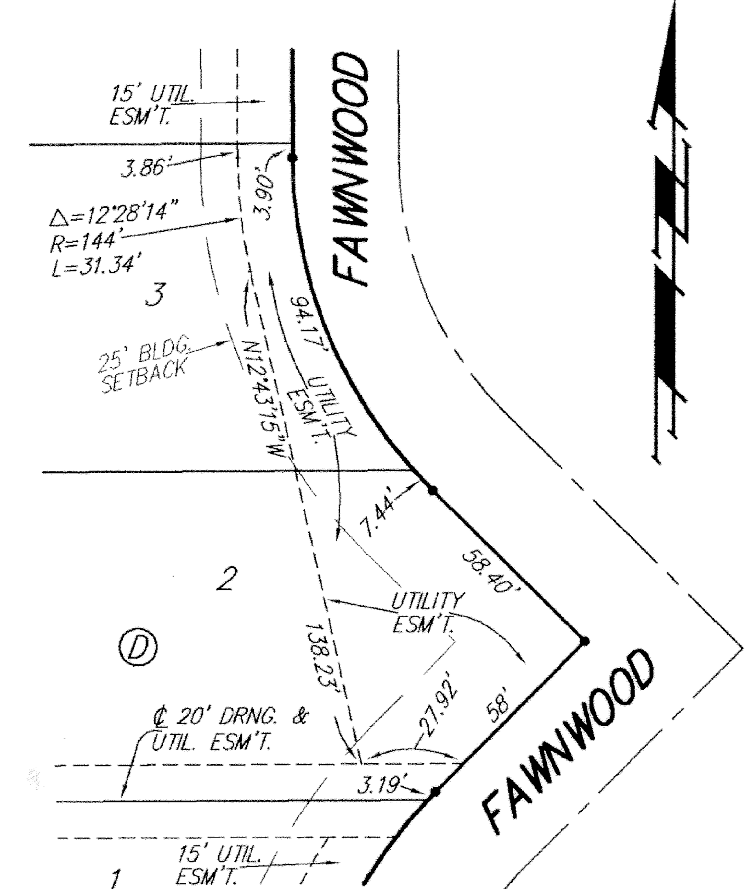
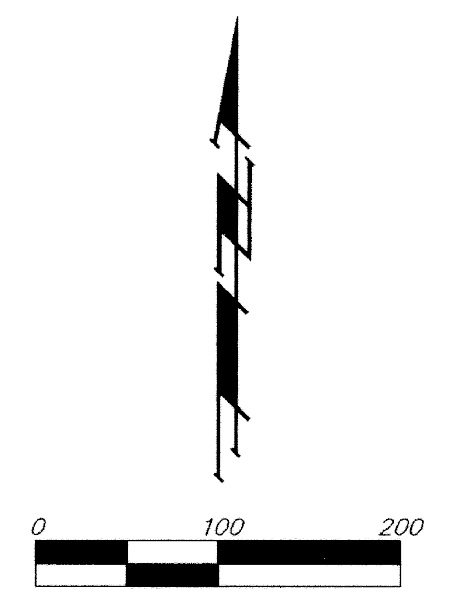


# THE WOODS ADDITION WICHITA, SEDGWICK COUNTY, KANSAS

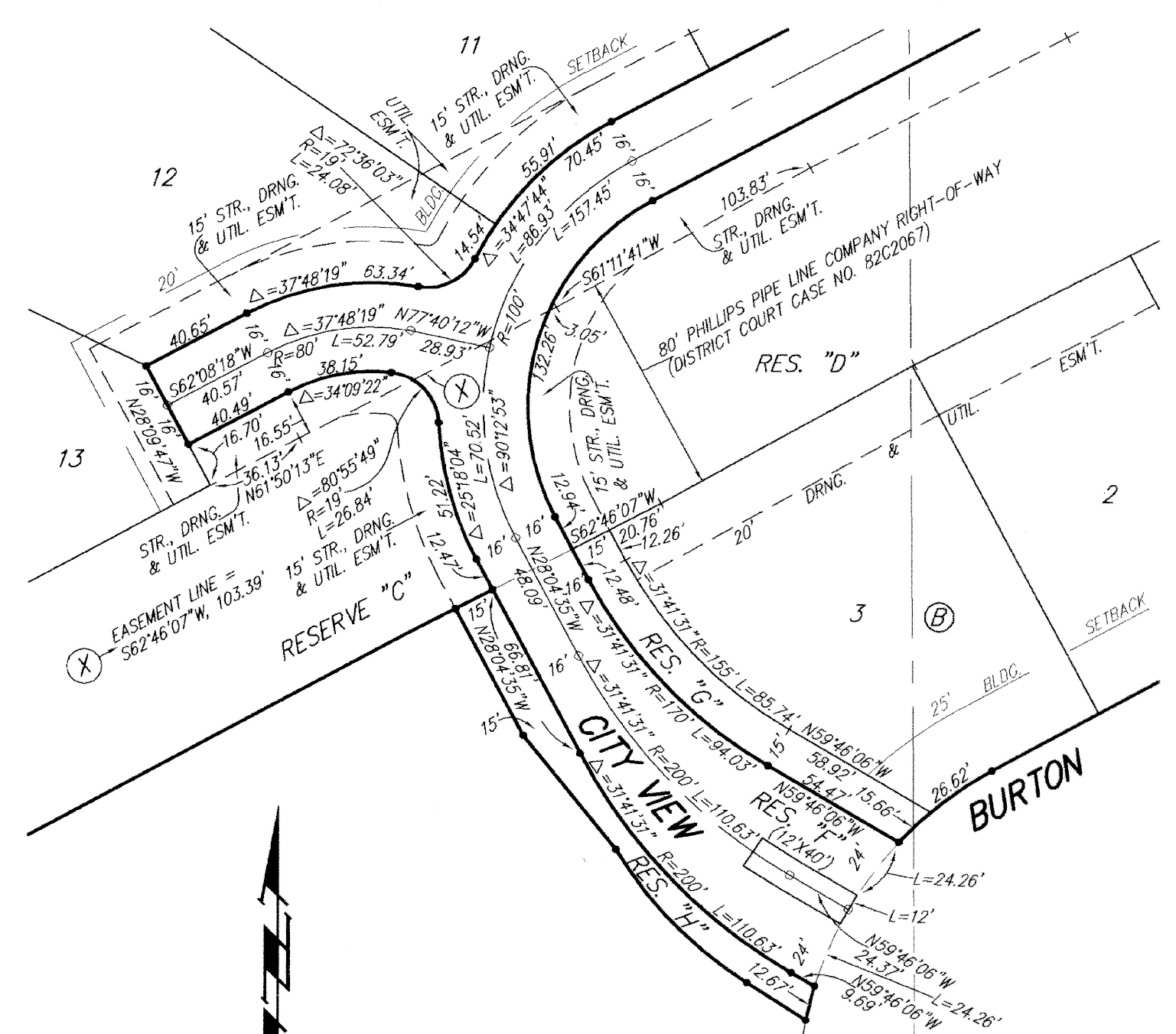


- = #4 REBAR W/ "DAUGHMAN" CAP (SET)
- ⊙ = #4 REBAR W/ "TILTS" CAP (FOUND)
- △ = STONE (FOUND)
- ⊞ = 3/4" IRON W/ THIMBLE (FOUND)

- (M) = MEASURED
- (P) = PLATTED
- (C) = CALCULATED
- (C-P) = CALCULATED PER PLATTED INFO.



**DETAIL "B"**  
(NO SCALE)  
(SEE PAGE 1)



**DETAIL "A"**  
(NO SCALE)

SEE DETAIL "A"

LOT	BLOCK	ELEVATION
1	A	1376.7
5-8	A	1380.5
4-8	B	1367.1
9-13	B	1374.1
14-15	B	1376.7
16-31	B	1375.1
32-41	B	1366.0

BENCHMARK:  
CITY OF WICHITA BENCHMARK DISC, TOP OF CURB  
AT WEST END OF CURB RETURN, NORTHWEST  
CORNER OF INTERSECTION OF CITY VIEW AND  
SHERIAC CIR. IN SHADOW WOODS ADDITION.  
ELEV. = 1386.66 NGVD29

CITY OF WICHITA BENCHMARK DISC, TOP OF CURB  
BY FIRE HYDRANT ALONG SOUTHERLY EXTENSION OF  
LOT LINE COMMON TO LOTS 17 & 18, BLOCK C,  
SHADOW WOODS ADDITION, ON NORTH SIDE OF  
SHERIAC CIR., WEST OF SHERIAC.  
ELEV. = 1380.59 NGVD29

CITY OF WICHITA BENCHMARK DISC, TOP OF CURB  
BY FIRE HYDRANT AT WEST END OF CURB RETURN,  
NORTHWEST CORNER OF INTERSECTION OF SHERIAC  
CIR. AND SHERIAC CT., SOUTH OF SE CORNER OF  
LOT 15, BLOCK B, SHADOW WOODS ADDITION.  
ELEV. = 1392.11 NGVD29

**NOTE:**  
A master grading plan for drainage has been developed for this subdivision  
and is on file with the City of Wichita, Kansas. All drainage easements,  
right-of-ways, or reserves shall remain at established grades or as  
modified with the approval of the City Engineer of the City of Wichita,  
Kansas. No obstructions which impede the flow of this drainage system  
shall be allowed.

Sedgwick County  
Register of Deeds - Map  
DOC # FLM-PG-28763861  
Recording Fee: \$4.00  
Date Recorded: 3/15/2006 9:02:14 AM

SHEET  
**20 OF 21**

**Baughman Company, P.A.**  
315 Ella St. Wichita, KS 67211 P 316-262-7271 F 316-262-0149  
LANDSCAPE ARCHITECTURE