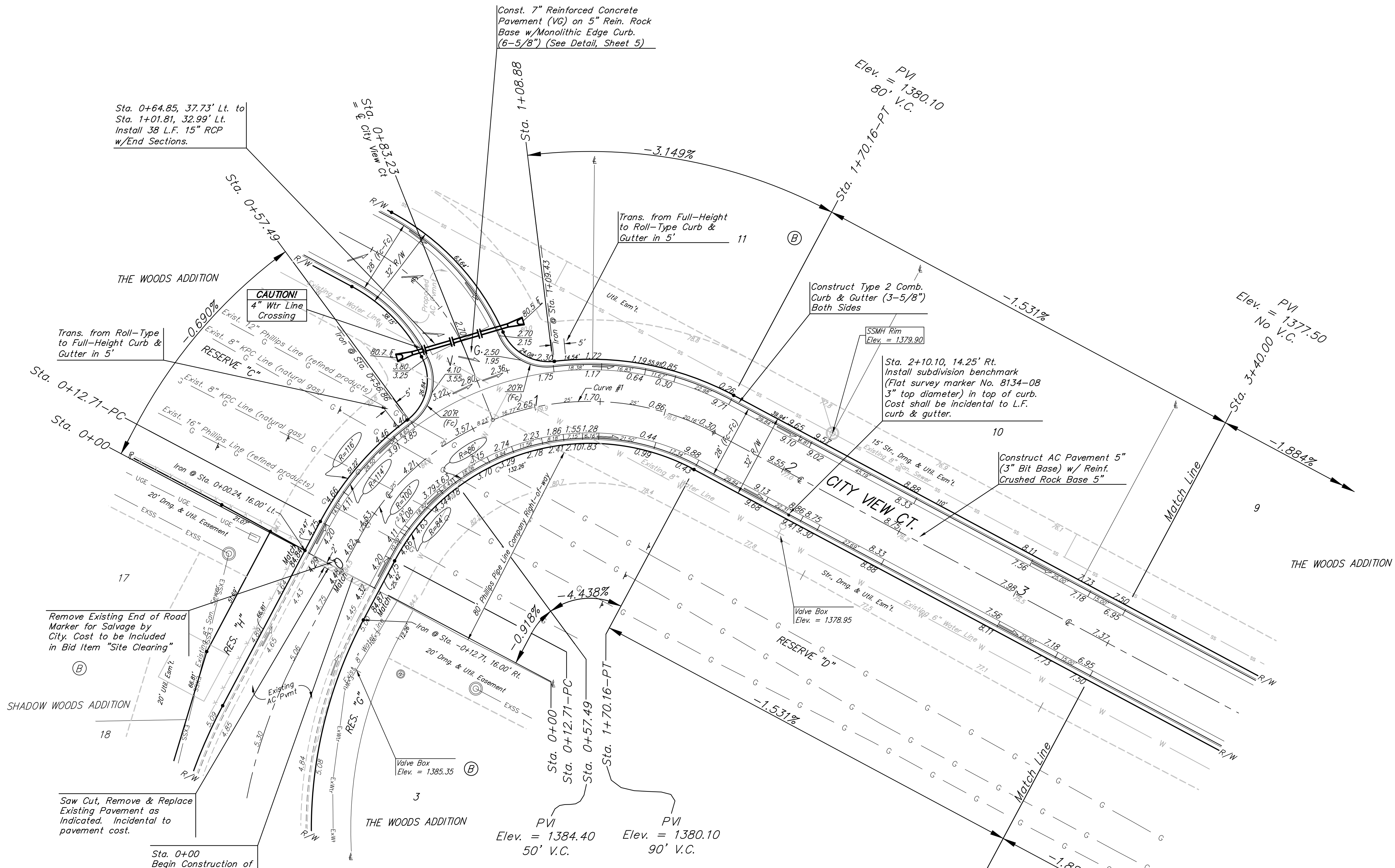
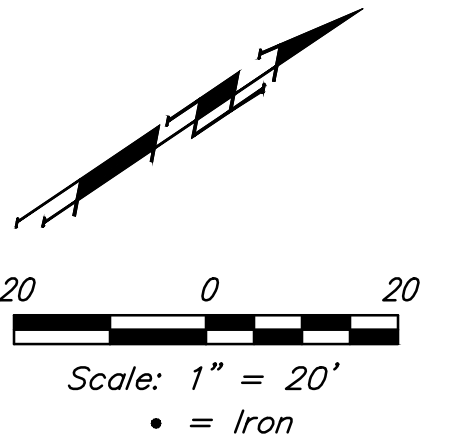


**BENCHMARKS:**  
 BM #1 Square cut in top of curb adjacent to the SE corner of Lot 2, Block B, The Woods Addition  
 Elev. = 1381.25 NGVD29

BM #2 Square cut in top of curb NW end of median, Reserve "F" The Woods Addition  
 Elev. = 1385.54 NGVD29



**Subdivision Bench Marks**

Street & Station	Location Description	Elevation
City View Ct. 2+10.10, 14.25' Rt.	Adjacent to Fire Hydrant opposite side of street from SW Corner of Lot 10, Block B.	

Curve #1  
 Curve Data Based on Centerline  
 Rad = 100' Delta = 90°12'53" Tangent = 100.38'  
 Arc = 157.45' L.C. = 141.69' Def./Ft. = 17.18921 Min.

Station	Arc	Face Chord Lengths		Defl.	Total Defl.
		8' Left	8' Right		
0+12.71	-	-	-	0°00'00"	0°00'00"
0+25.00	12.29'	14.98'	9.58'	3°31'15"	3°31'15"
0+50.00	25.00'	30.42'	19.45'	7°09'44"	10°40'59"
0+75.00	25.00'	30.42'	19.45'	7°09'44"	17°50'43"
1+00.00	25.00'	30.42'	19.45'	7°09'44"	25°00'27"
1+25.00	25.00'	30.42'	19.45'	7°09'44"	32°10'11"
1+50.00	25.00'	30.42'	19.45'	7°09'43"	39°19'54"
1+70.16	20.16'	24.55'	15.70'	5°46'33"	45°06'27"

Roll type curb & gutter to be constructed on the pavement on this sheet.  
 Top of curb elevation are given for full height curb.



		The Woods Addition - Phase III	
		<b>CITY VIEW CT</b>	
Sta. 0+00 to Sta. 3+40.00		Baughman Company, P.A. 315 Ellis St. Wichita, KS 67211 P 316-262-7271 F 316-262-0149	
PROJECT NUMBER 472-84361		DESIGN AEG	DRAWN JAK
REVISIONS:		APPROVED	DATE 2/18/16
		SCALE Noted	SHEET
		<b>6 OF 21</b>	