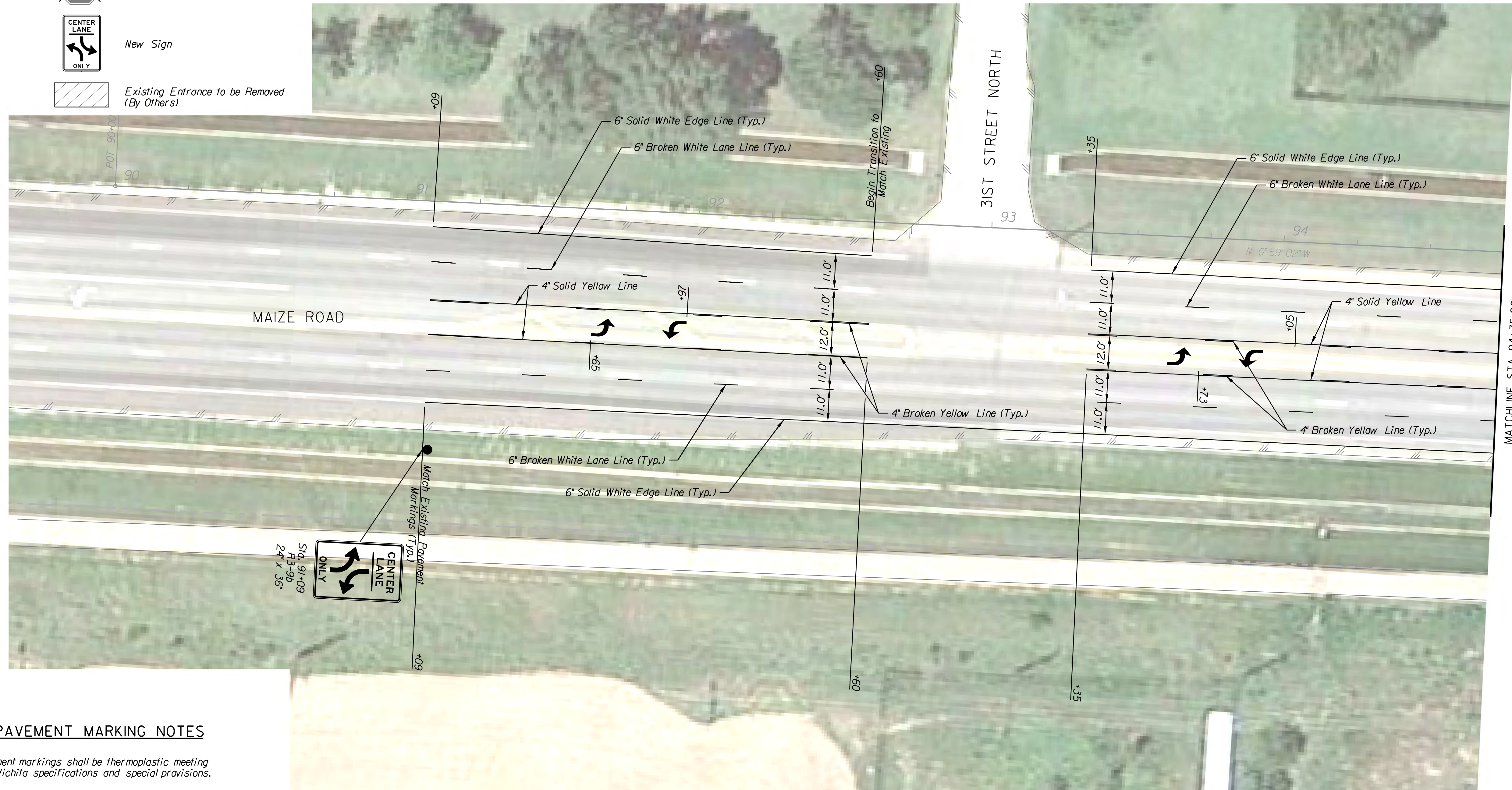
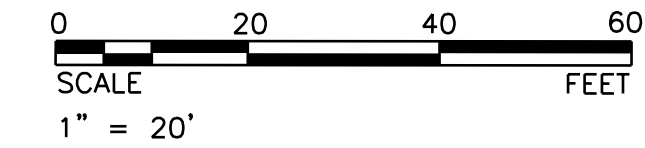


LEGEND

- Future Drive
- Existing Sign to Remain
- Existing Sign to be Removed (By Others)
- New Sign
- Existing Entrance to be Removed (By Others)



GENERAL PAVEMENT MARKING NOTES

All pavement markings shall be thermoplastic meeting City of Wichita specifications and special provisions.

All existing signs shall remain in place unless directed otherwise by the Engineer.

All work shall be completed to the latest edition of the MUTCD.

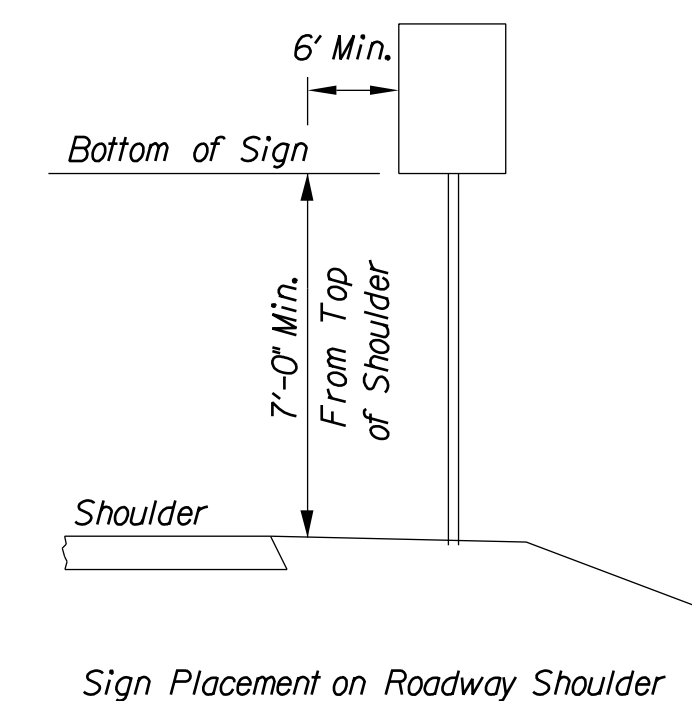
Pavement Markings shall be paid for as LUMP SUM.

Removal of existing pavement markings which conflict with proposed pavement markings shall be paid for by the bid item "Removal of Existing Markings (grinding)". All materials, labor and equipment necessary to complete this work shall be included in the bid item and will be paid for by the lump sum regardless of width removed.

Sign Removal, if directed by the Engineer, shall be SUBSIDIARY to bid item "Pavement Marking".

Signaling shall be paid for as a LUMP SUM. All materials, labor and equipment necessary to complete this work shall be SUBSIDIARY to the bid item "Signaling".

Quantities (For Information Only)		
SUMMARY OF SIGNING & PAVEMENT MARKING	QUANTITY	UNIT
Pavement Marking (Thermoplastic)(YELLOW)(4")	6,430	FT
Pavement Marking (Thermoplastic)(YELLOW)(12")	151	FT
Pavement Marking (Thermoplastic)(WHITE)(6")	7,304	FT
Pavement Marking (Thermoplastic)(WHITE)(24")	214	FT
Pavement Marking Symbol (Thermoplastic)(WHITE)(LT)	26	EA
Pavement Marking Symbol (Thermoplastic)(WHITE)(RT)	2	EA
Removal of Existing Markings (Grinding)	14,508	FT
Signaling (24"x36" R3-9b)	4	EA



URBAN:

1. Ground-mounted signs shall be mounted at a minimum height of 7' measured from the bottom of sign to the top of paved shoulder.

2. Permanent sign supports should not be located on sidewalks or areas designated for pedestrian or bicycle traffic.

3. The height from bottom of the secondary sign mounted below another sign may be 6' measured from the bottom of sign to the near edge of the pavement. Signs shall not overlap each other. Signs mounted lower than 7' should not project more than 4' into pedestrian facilities.

ADJUSTMENTS:

Signs may be moved laterally or longitudinally if it will improve the visibility of the sign or other signs and if it will protect the sign more.

Tran Systems
 245 NORTH WACO
 SUITE 222
 WICHITA, KANSAS 67202
 PHONE: 316-303-3000
 FAX: 316-303-0156

CONSULTANTS:

**SILVER FOX STREET & MAIZE ROAD
 TRAFFIC SIGNALIZATION**

WICHITA, KANSAS

REVISIONS:	MARK	DATE	DESCRIPTION

PROJ NO: P125100009
 SCALE: 1" = 20'
 DATE: 3/9/2016
 DESIGNED BY: CCB
 DRAWN BY: CCB
 CHECKED BY: SGE

SHEET TITLE:
PAVEMENT MARKINGS

SHEET NO.
14
 SHEET 14 OF 30