

CONSULTANTS:

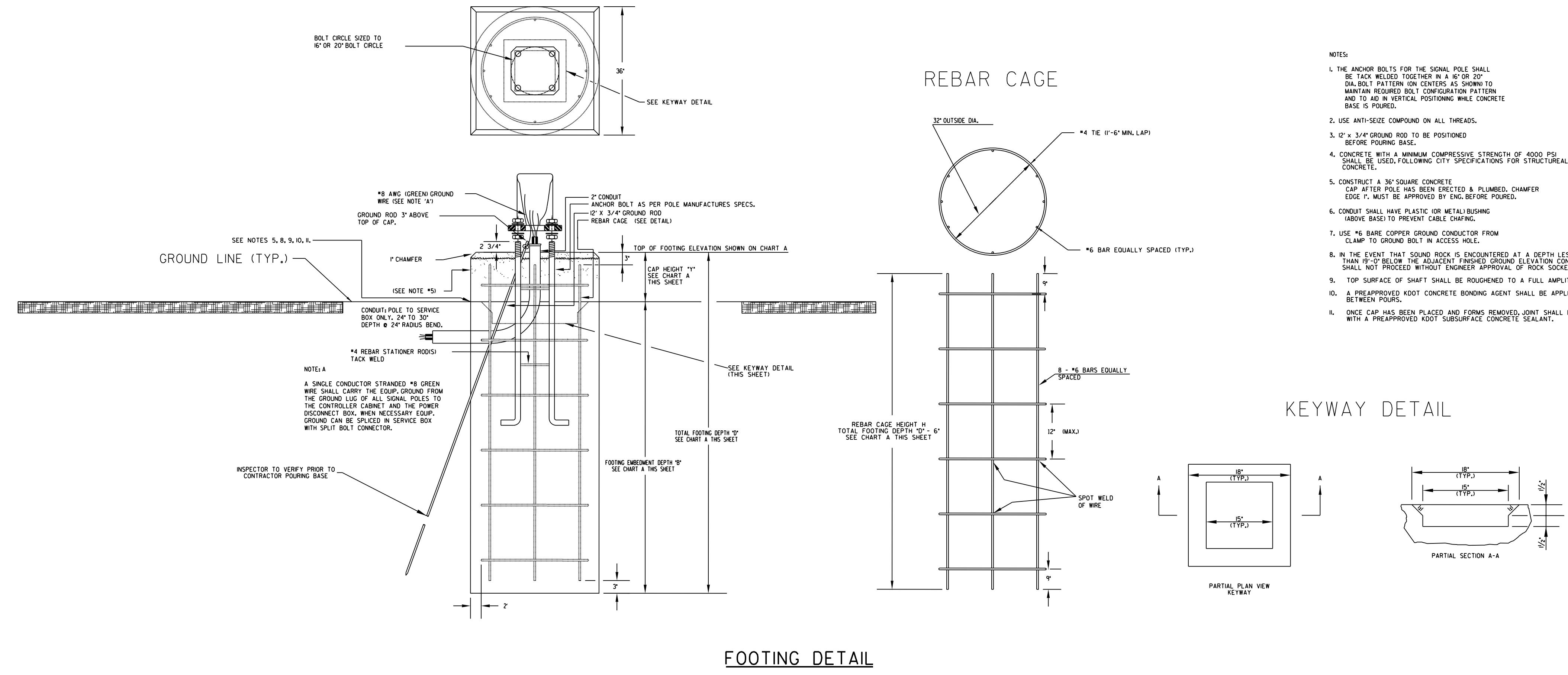
SILVER FOX STREET & MAIZE ROAD  
 TRAFFIC SIGNALIZATION  
 WICHITA, KANSAS  


REVISIONS:	MARK	DATE	DESCRIPTION

PROJ NO: P125100009  
 SCALE: NTS  
 DATE: 2/17/2016  
 DESIGNED BY: CCB  
 DRAWN BY: SGE  
 CHECKED BY: SGE

SHEET TITLE:  
**TRAFFIC SIGNAL  
 FOOTING  
 DETAILS**

SHEET NO.  
**6**  
 SHEET 6 OF 30



**CHART A**

POLE NO.	*EXIST. GRND. ELEV. @ CENTER OF POLE	TOP FOOTING ELEV.	CAP HEIGHT "F"	MIN. TOTAL FOOTING DEPTH "D"	MIN. REBAR CAGE HEIGHT "H"	FOOTING TYPE	MIN. EMBEDMENT DEPTH "B"
1	1351.44	1353.45	2.01'	21.00'	20.50'	A	19'
2	1351.30	1353.47	2.19'	21.9'	20.69'	A	19'
3	1351.12	1353.52	2.40'	21.40'	20.90'	A	19'
4	1352.47	1352.97	0.50'	12.50'	12.00'	B	12'

\*Actual elevations may differ in the field, it is the Contractor's responsibility to verify elevations prior to placing footing.