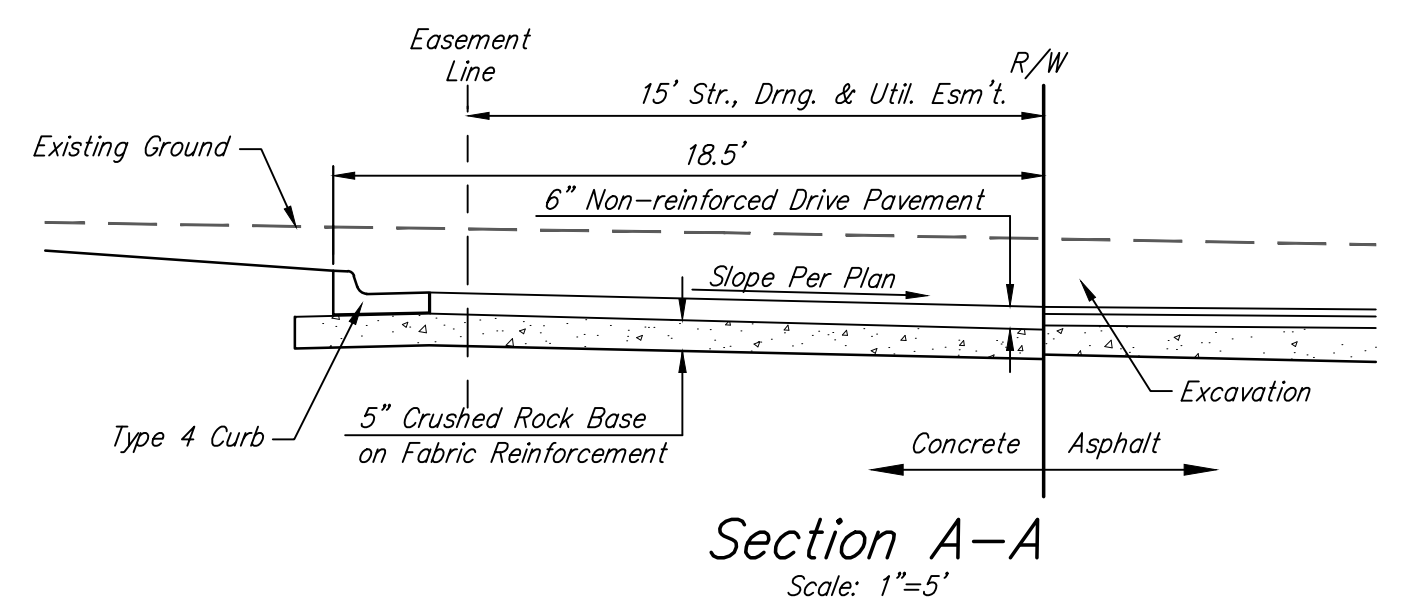
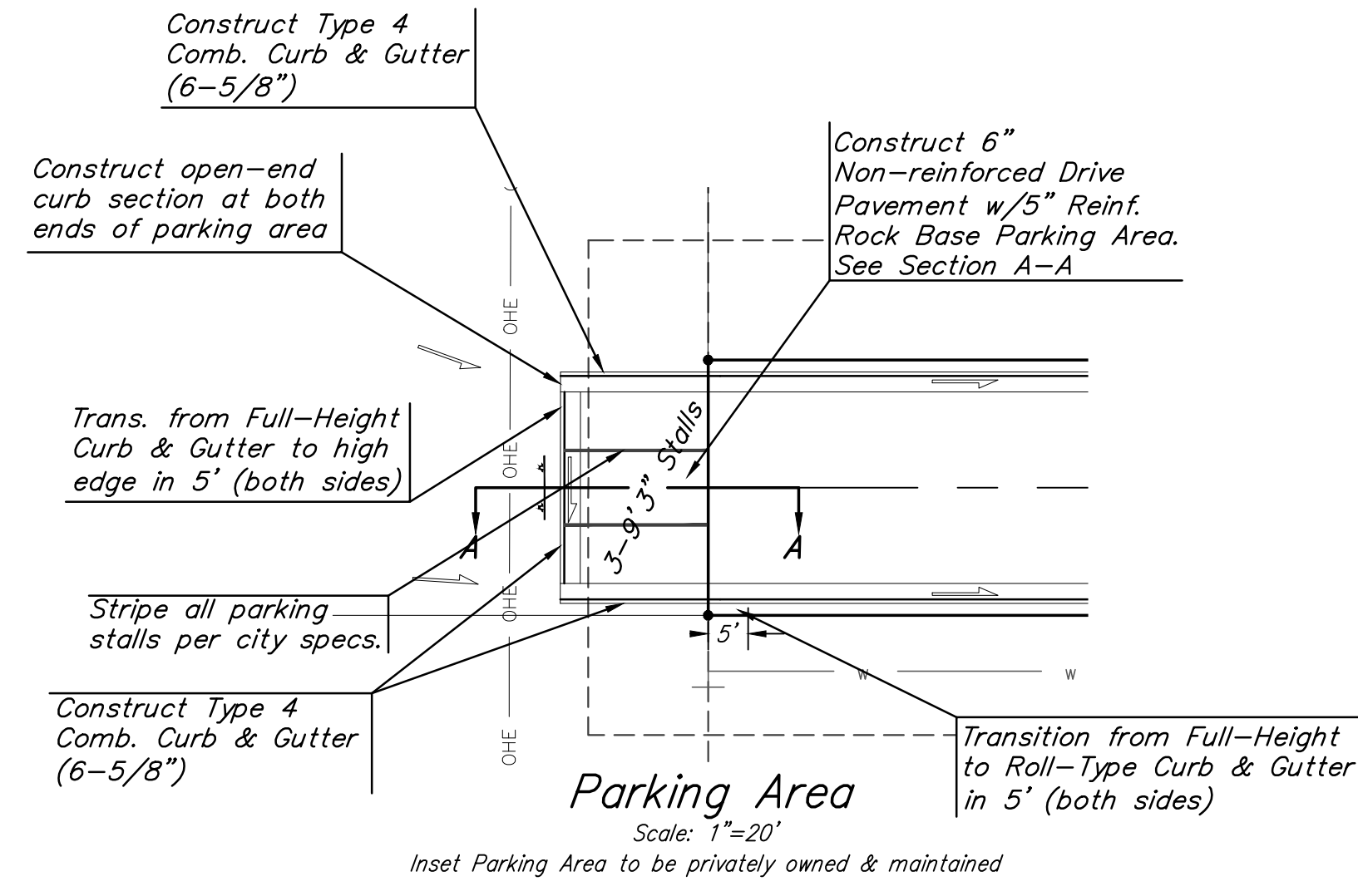
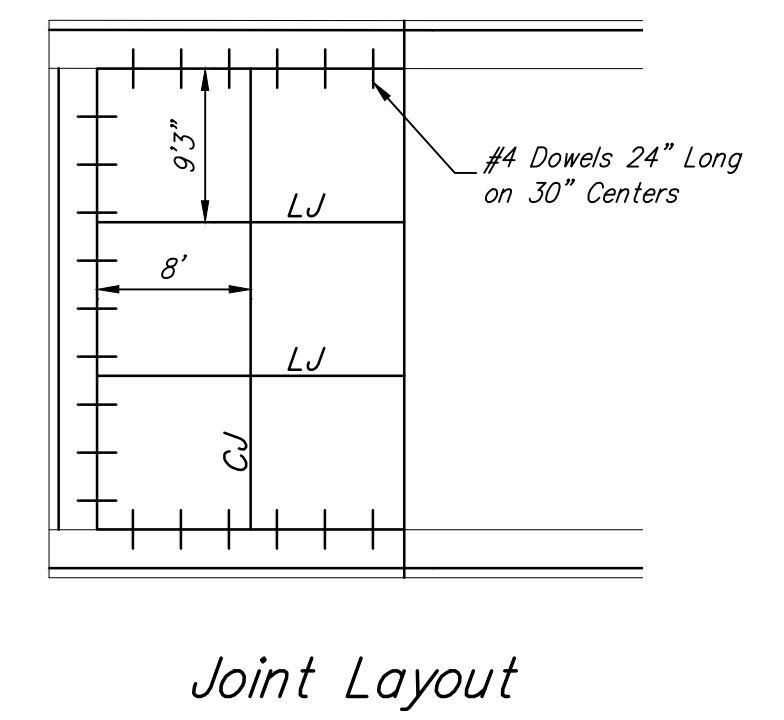
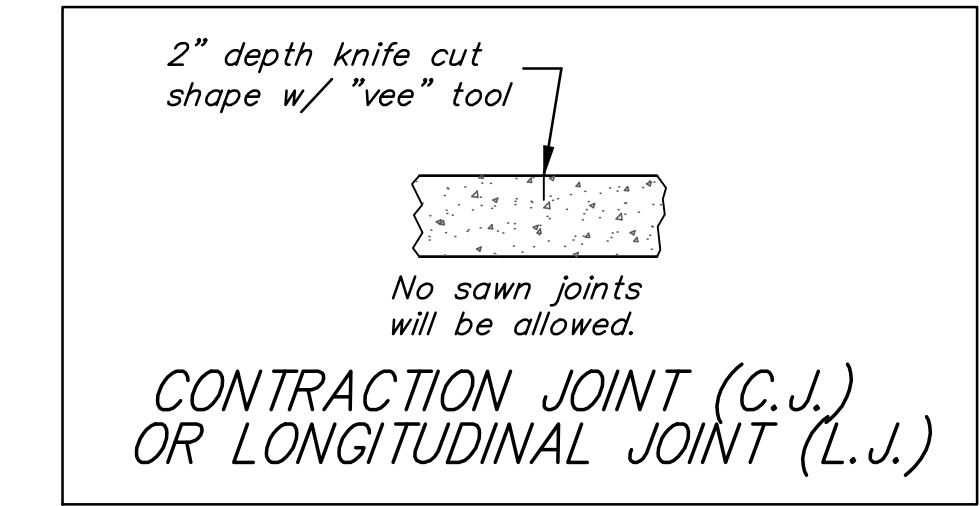
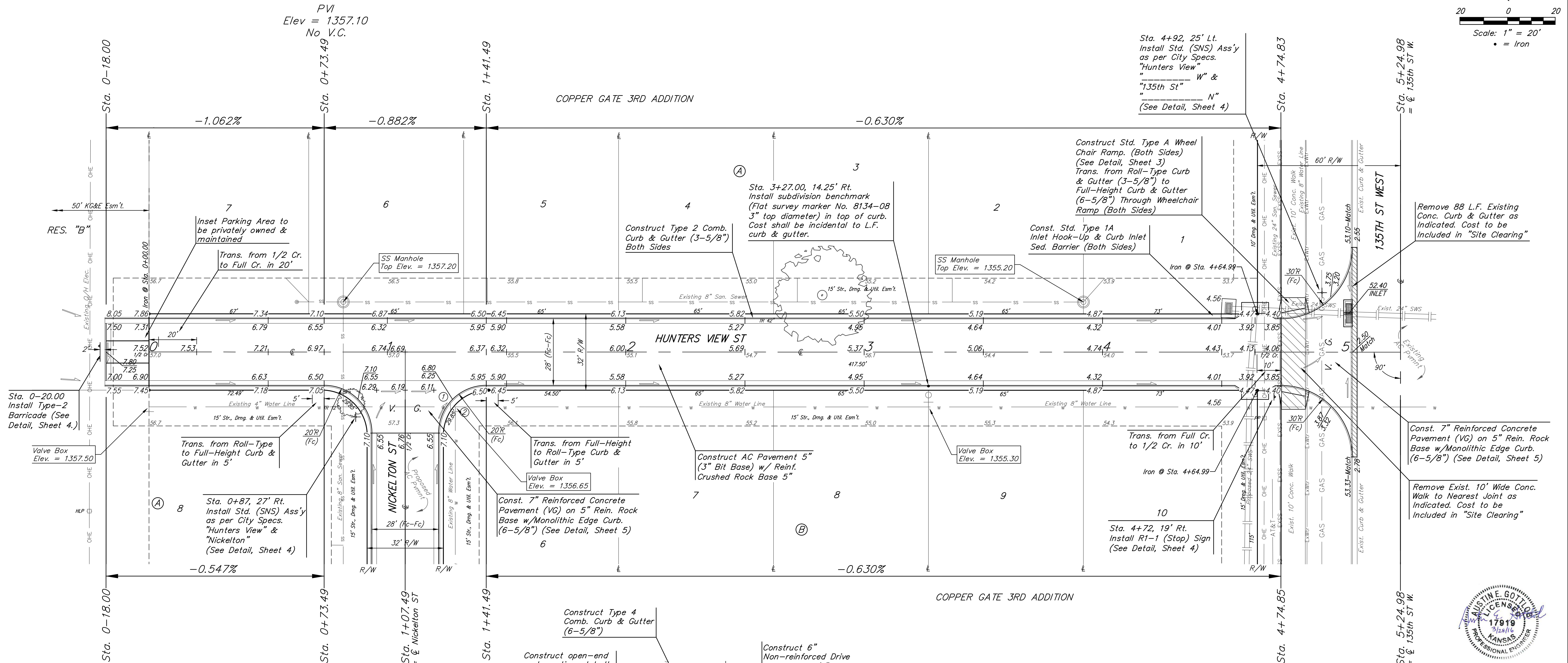
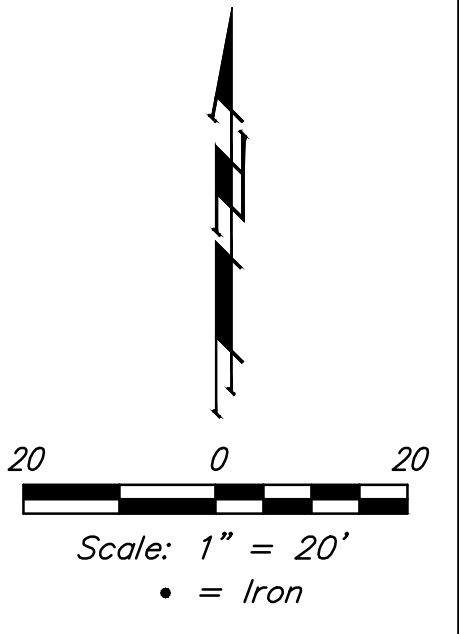


**BENCHMARK:**  
 "X" cut top of the NE corner of drop inlet, 82.5'± north & 30.5'± west of the SE Cor., SE1/4, Sec. 11, TWP. 27-S, R-2-W. Elev. = 1353.75 (NAVD88)



		Copper Gate 3rd Addition	
		<b>HUNTERS VIEW</b>	
Sta. 0+18.00 to Sta. 5+24.98		Baughman Company, P.A. 315 Ellis St. Wichita, KS 67211 P 316-262-7271 F 316-262-0149 ENGINEERING   SURVEYING   PLANNING   LANDSCAPE ARCHITECTURE	
PROJECT NUMBER 472-85259	DESIGN AEG	DRAWN JAK	DATE 3/28/16
REVISIONS:	APPROVED	SCALE Noted	SHEET
		<b>7 OF 32</b>	



Roll type curb & gutter to be constructed on the pavement on this sheet. Top of curb elevation are given for full height curb.