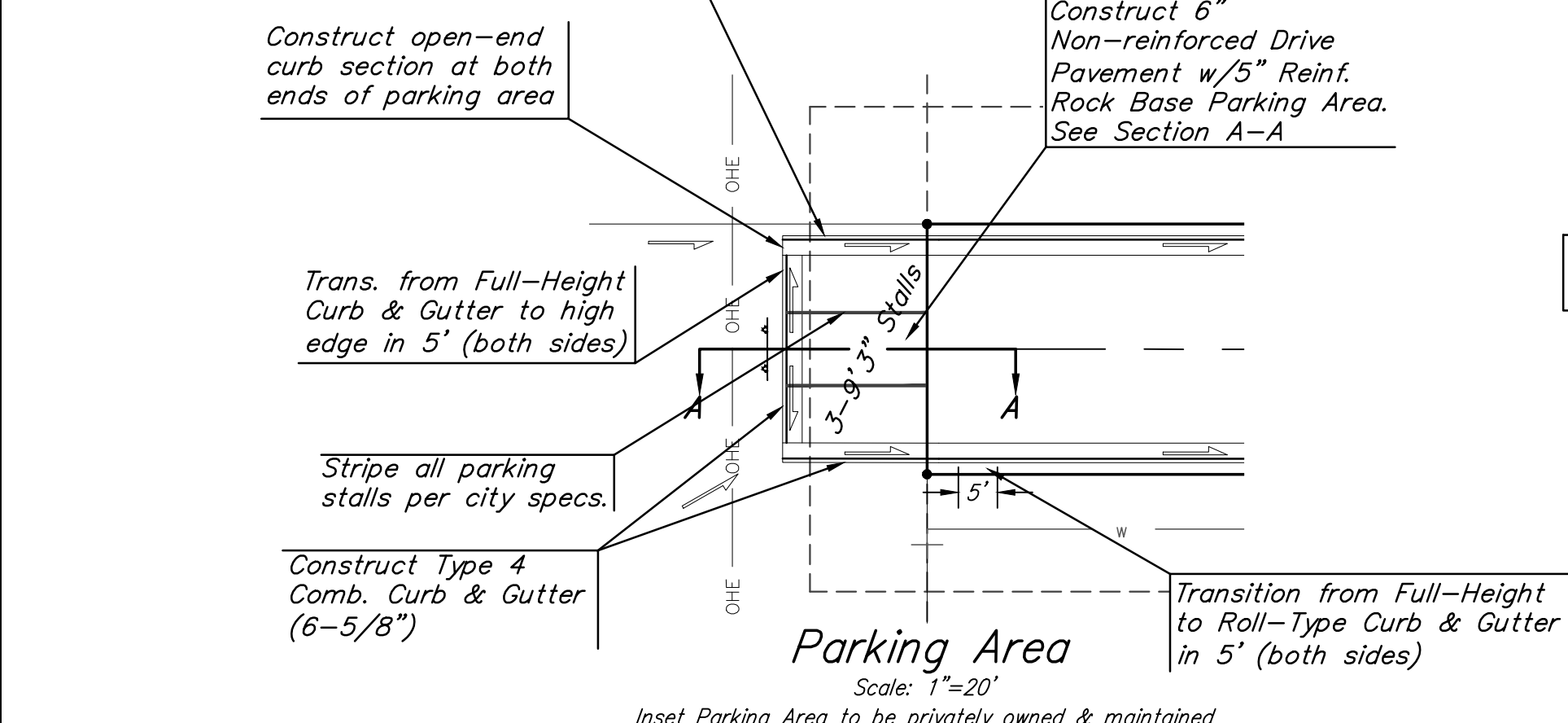
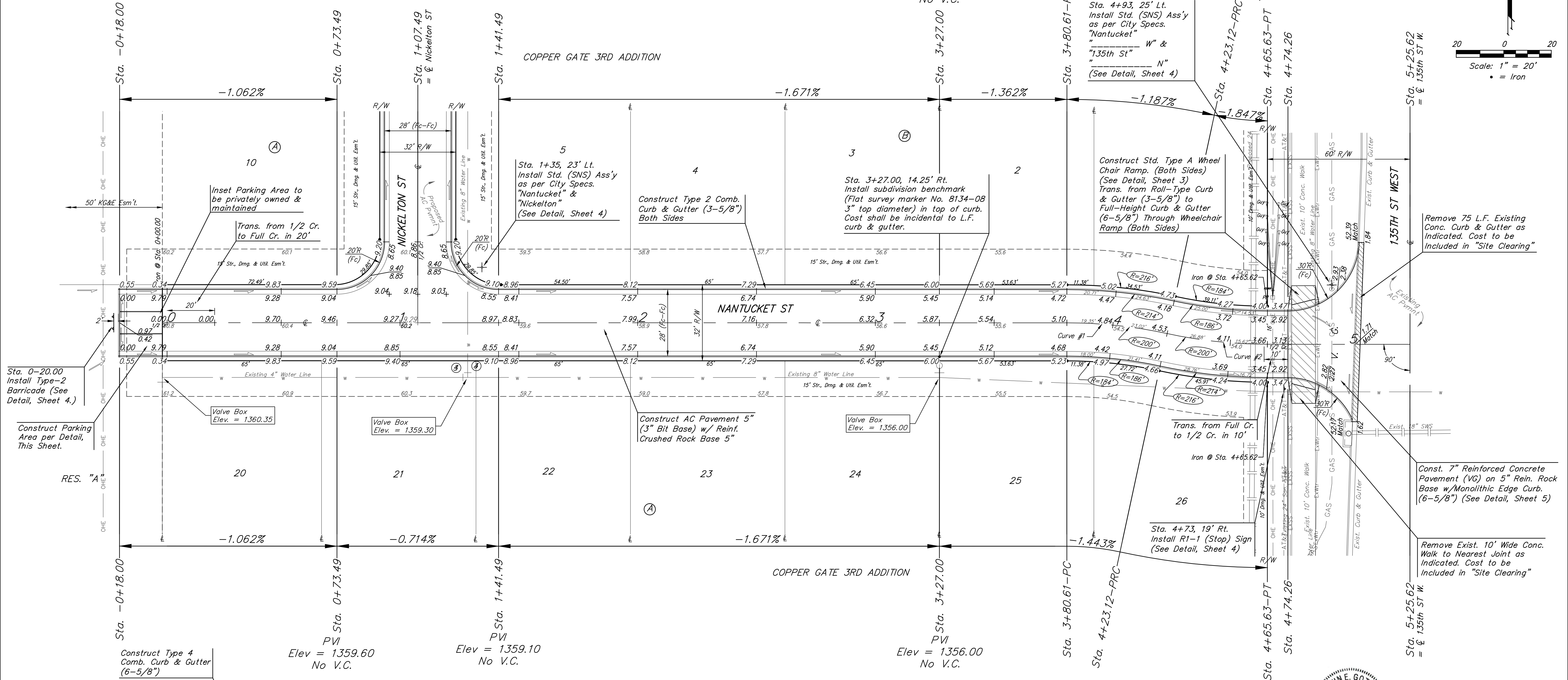
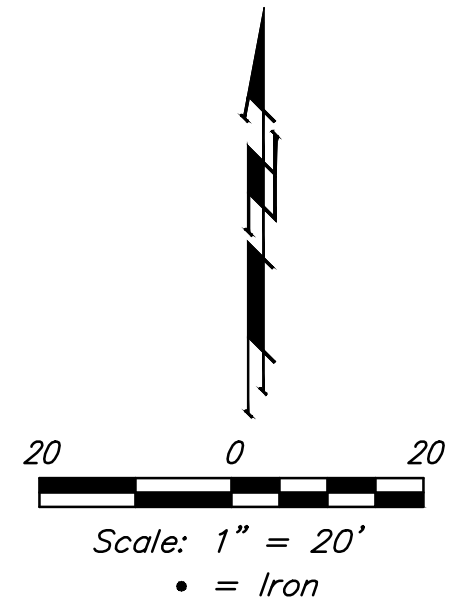
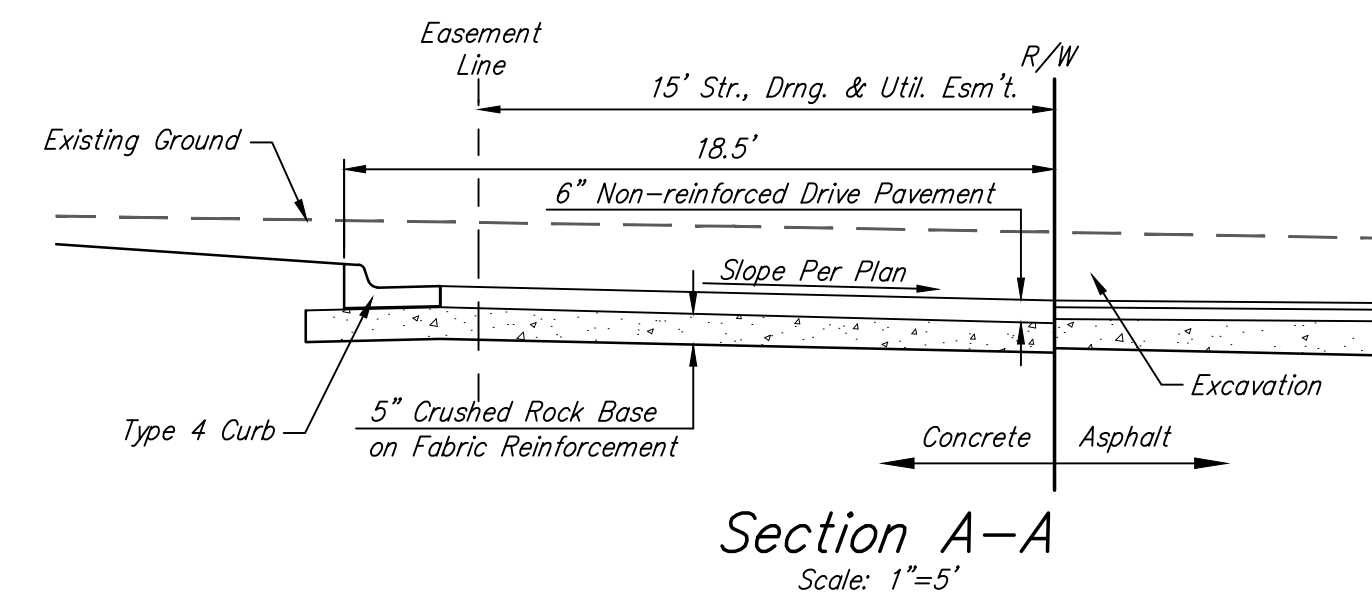


BENCHMARK:
 "X" cut top of the NE corner of
 drop inlet, 82.5'± north & 30.5'±
 west of the SE Cor., SE1/4, Sec.
 11, TWP. 27-S, R-2-W.
 Elev. = 1353.75 (NAVD88)



See Sheet 7 for Joint Layout and Detail



Curve #1
 Curve Data Based on Centerline
 Rad. = 200' Delta = 127°0'38" Tangent = 21.33'
 Arc = 42.51' L.C. = 42.43' Def./ft. = 8.59366 Min.

Station	Arc	Face Chord Lengths		Defl.	Total Defl.
		8' Left	8' Right		
3+80.61	-	-	-	0'00'00"	0'00'00"
4+00.00	19.39'	21.51'	17.25'	2'46'38"	2'46'38"
4+23.12	23.12'	25.65'	20.56'	3'18'41"	6'05'19"

Curve #2
 Curve Data Based on Centerline
 Rad. = 200' Delta = 127°0'38" Tangent = 21.33'
 Arc = 42.51' L.C. = 42.43' Def./ft. = 8.59366 Min.

Station	Arc	Face Chord Lengths		Defl.	Total Defl.
		8' Left	8' Right		
4+23.12	-	-	-	0'00'00"	0'00'00"
4+25.00	1.88'	1.67'	2.09'	0'16'09"	0'16'09"
4+50.00	25.00'	22.23'	27.73'	3'34'51"	3'51'00"
4+65.63	15.63'	13.91'	17.34'	2'14'19"	6'05'19"



Roll type curb & gutter to be constructed on the pavement on this sheet.
 Top of curb elevation are given for full height curb.

Baughman Engineering | Surveying | Planning | Landscape Architecture

Copper Gate 3rd Addition
NANTUCKET
 Sta. 0+02.00 to Sta. 5+25.62

PROJECT NUMBER: 472-85259
 DESIGN: AEG
 DRAWN: JAK
 APPROVED: [Signature]
 DATE: 3/28/16

REVISIONS:

SCALE: Noted
 SHEET: **8 OF 32**