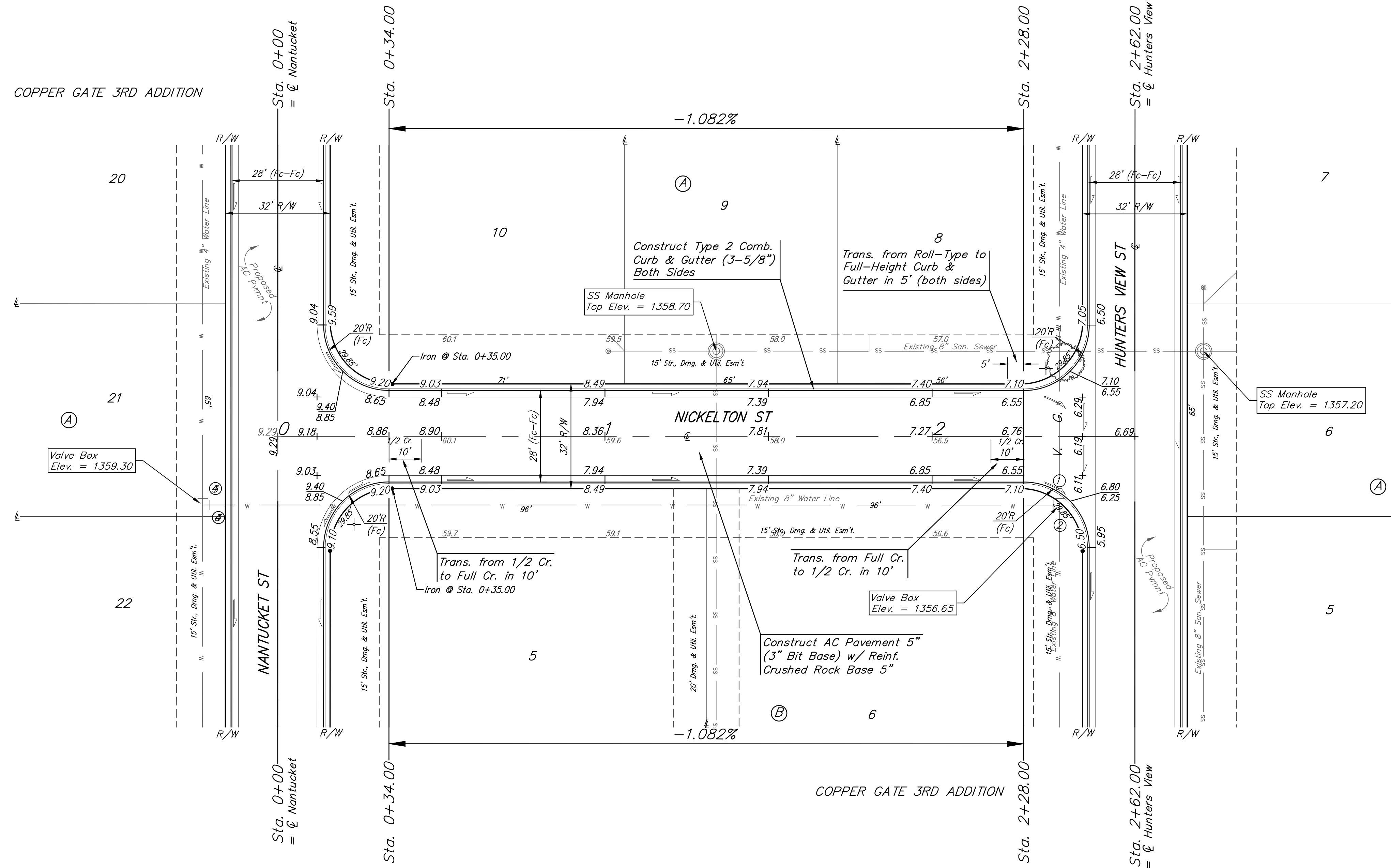
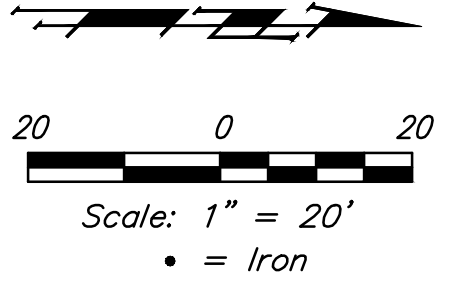


BENCHMARK:
 "X" cut top of the NE corner of drop inlet. 82.5'± north & 30.5'± west of the SE Cor., SE1/4, Sec. 11, TWP. 27-S, R-2-W. Elev. = 1353.75 (NAVD88)



Valve Box
Elev. = 1359.30

Valve Box
Elev. = 1356.65

SS Manhole
Top Elev. = 1357.20

SS Manhole
Top Elev. = 1358.70

VALVE LOCATION TABLE			
VALVE NUMBER	BASELINE STATION	OFFSET DISTANCE	OFFSET DIRECTION
1	1+26.49	21'	Rt.
2	1+28.49	23'	Rt.
3	1+26.49	21'	Rt.
4	1+28.49	23'	Rt.

Subdivision Bench Marks		
Street & Station	Location Description	Elevation
Hunters View St 3+27.00, 14.25' Rt.	Adjacent to Fire Hydrant at NE Corner of Lot 8, Block B	
Nantucket St 3+27.00, 14.25' Rt.	Adjacent to Fire Hydrant at NE Corner of Lot 24, Block A	
13th Ct North 1+50.96, 14.25' Rt.	Adjacent to Fire Hydrant at NW Corner of Lot 15, Block A	

Roll type curb & gutter to be constructed on the pavement on this sheet.
 Top of curb elevation are given for full height curb.



	Copper Gate 3rd Addition		
	NICKELTON		
Sta. 0+00 to Sta. 2+62.00			
Baughman Company, P.A. 315 Ellis St. Wichita, KS 67211 P 316-262-7271 F 316-262-0149 ENGINEERING SURVEYING PLANNING LANDSCAPE ARCHITECTURE			
PROJECT NUMBER 472-85259	DESIGN AEG	DRAWN JAK	
REVISIONS:	APPROVED	DATE 3/28/16	
	SCALE Noted	SHEET	
			9 OF 32