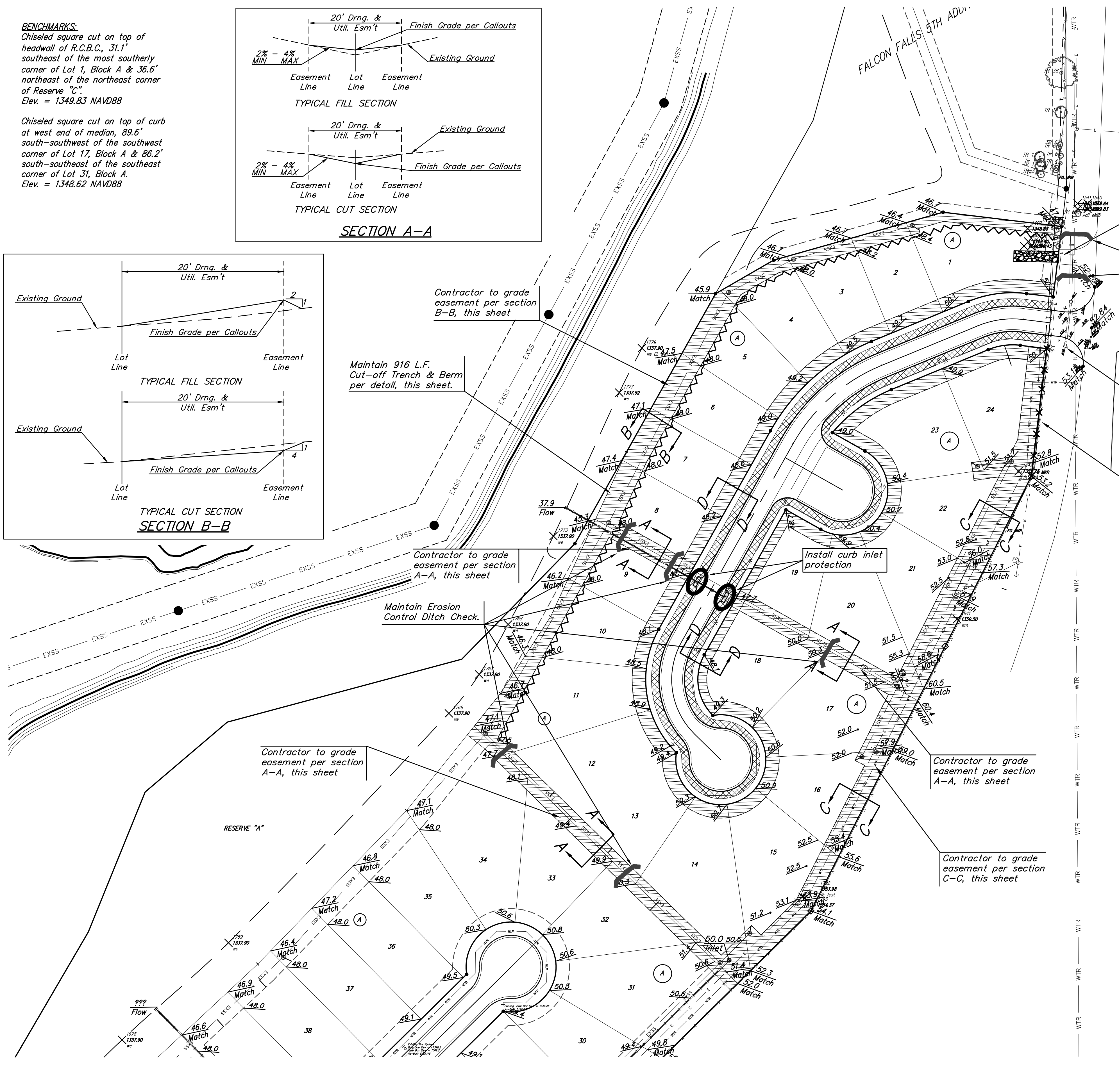
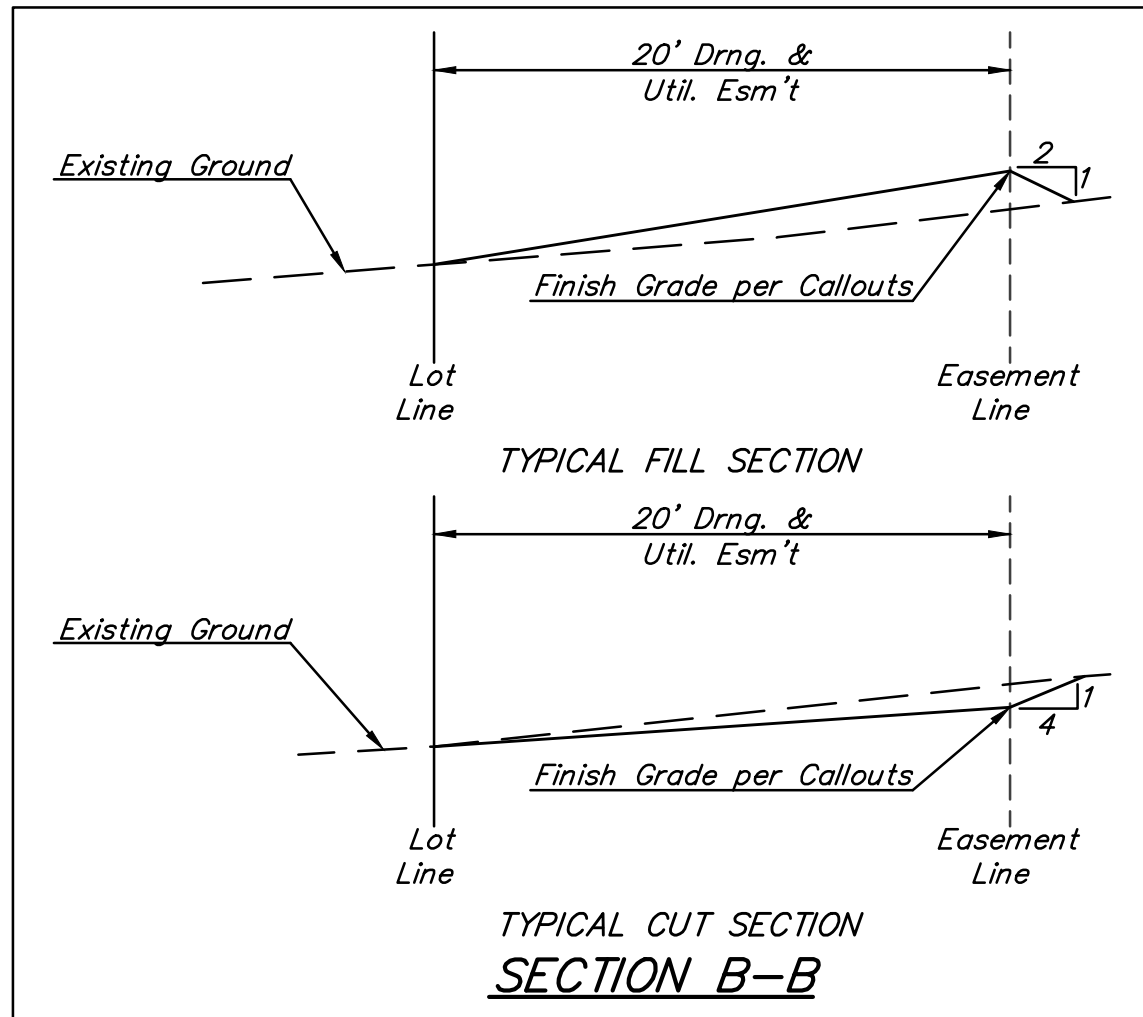
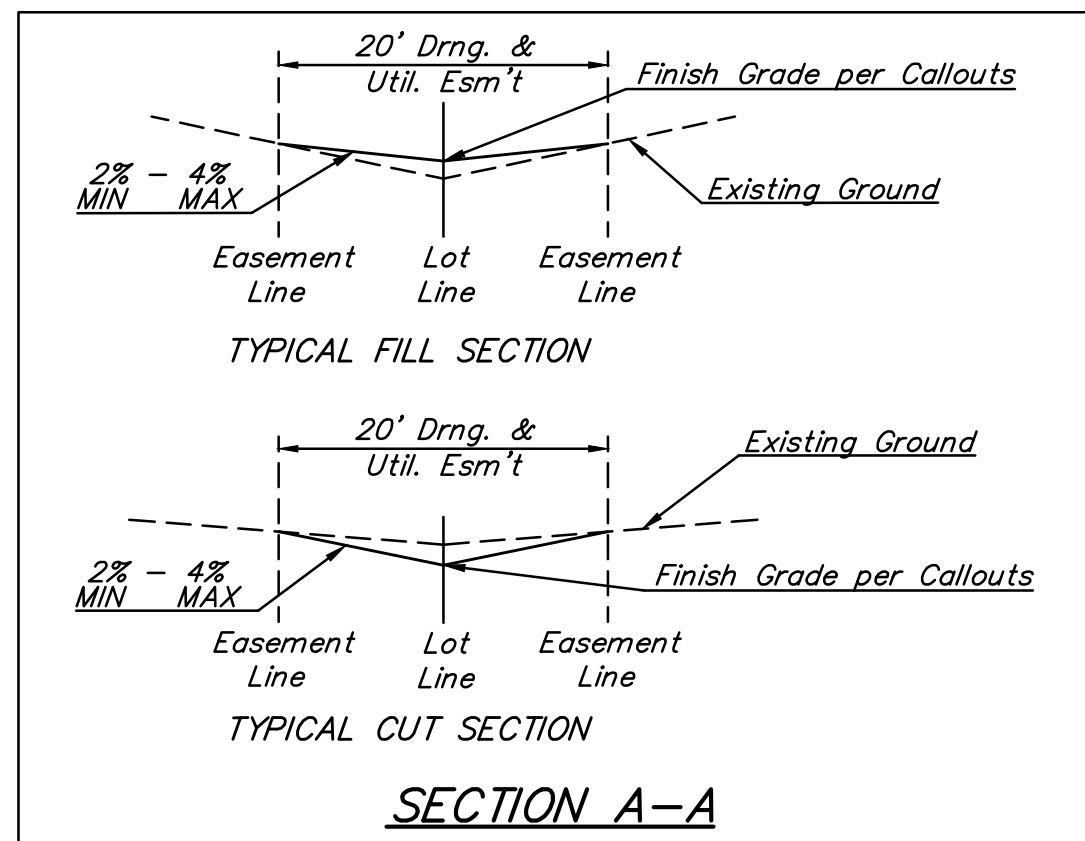


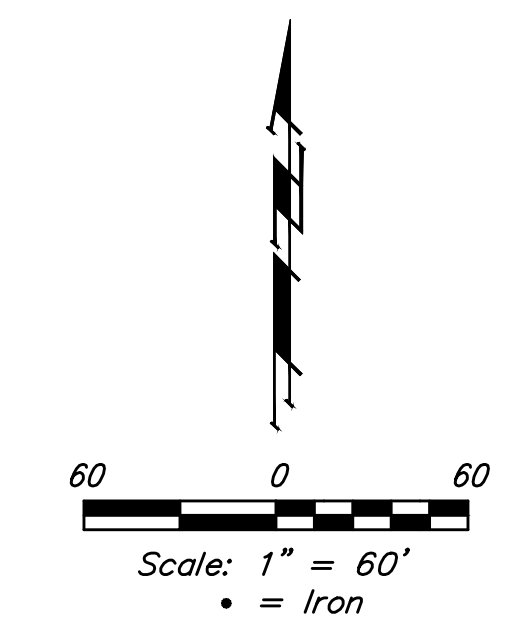
BENCHMARKS:
 Chiseled square cut on top of headwall of R.C.B.C., 31.1' southeast of the most southerly corner of Lot 1, Block A & 36.6' northeast of the northeast corner of Reserve "C".
 Elev. = 1349.83 NAVD88

Chiseled square cut on top of curb at west end of median, 89.6' south-southwest of the southwest corner of Lot 17, Block A & 86.2' south-southeast of the southeast corner of Lot 31, Block A.
 Elev. = 1348.62 NAVD88

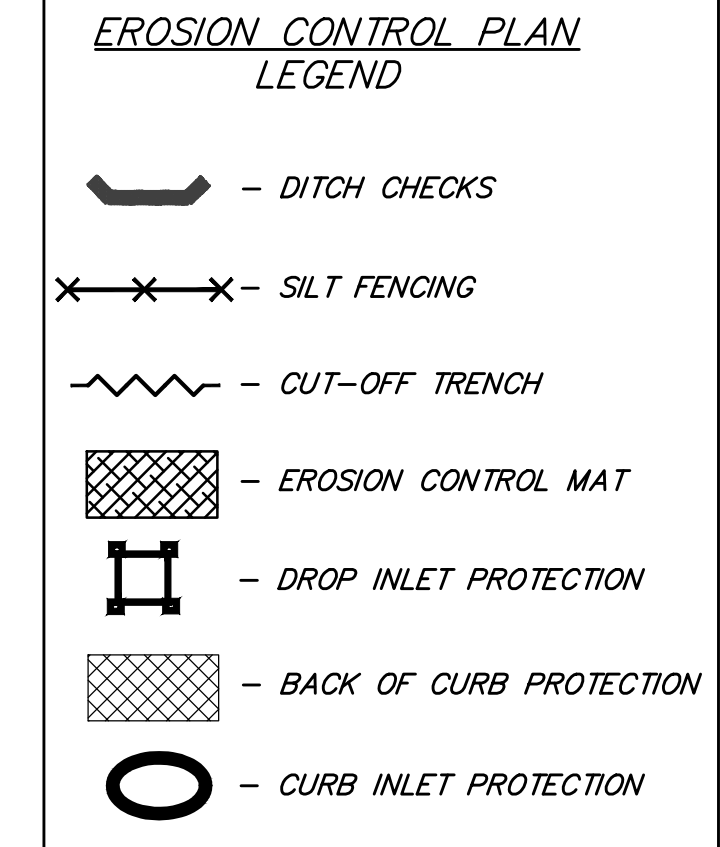


---1.364--- Existing Ground

NOTES:
 Contractor shall make sure all erosion control is in place before project is accepted. This plan represents the minimum standard. Any additional erosion control measures shall be installed by the Contractor as needed.
 All areas disturbed during construction shall be seeded, mulched, and fertilized as per Cover Sheet General Notes.



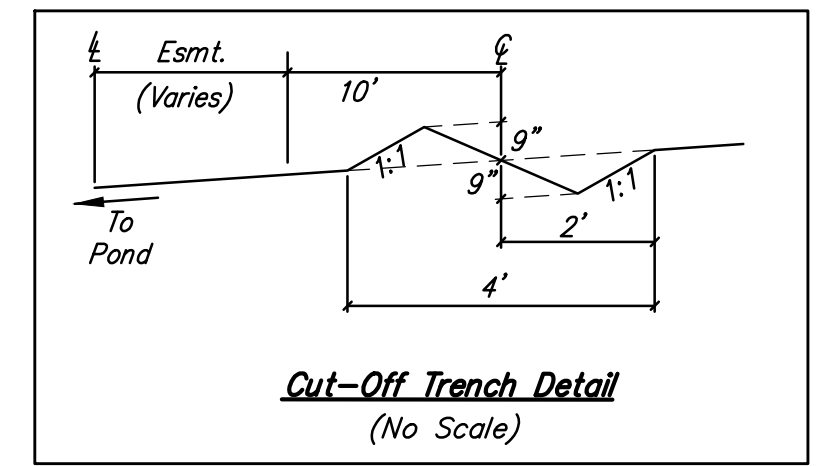
Maintain 50' x 12' Gravel Construction Entrance installed with Water Line Project. Remove Existing Gravel Drive, 24" x 34" HECMP, and Construction Entrance at conclusion of construction. Regrade ditch to provide positive drainage and prevent ponding of water. Cost to be incidental to "Site Clearing".



Install Straw Wattle Ditch Checks

Install Rip rap, each end of pipe (see plan sheet)

Maintain 144 LF of Silt Fence, per detail, sheet 13.



▨ = Easements To Be Graded

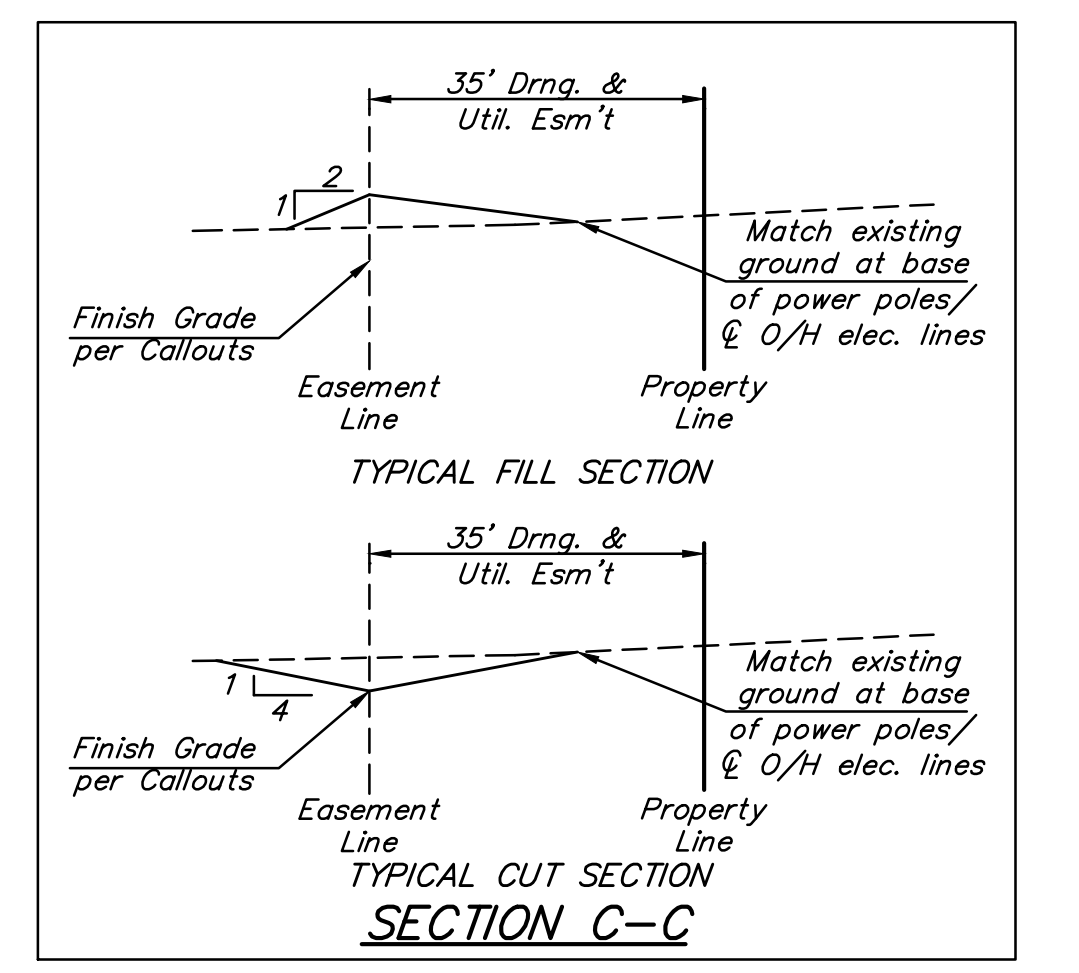
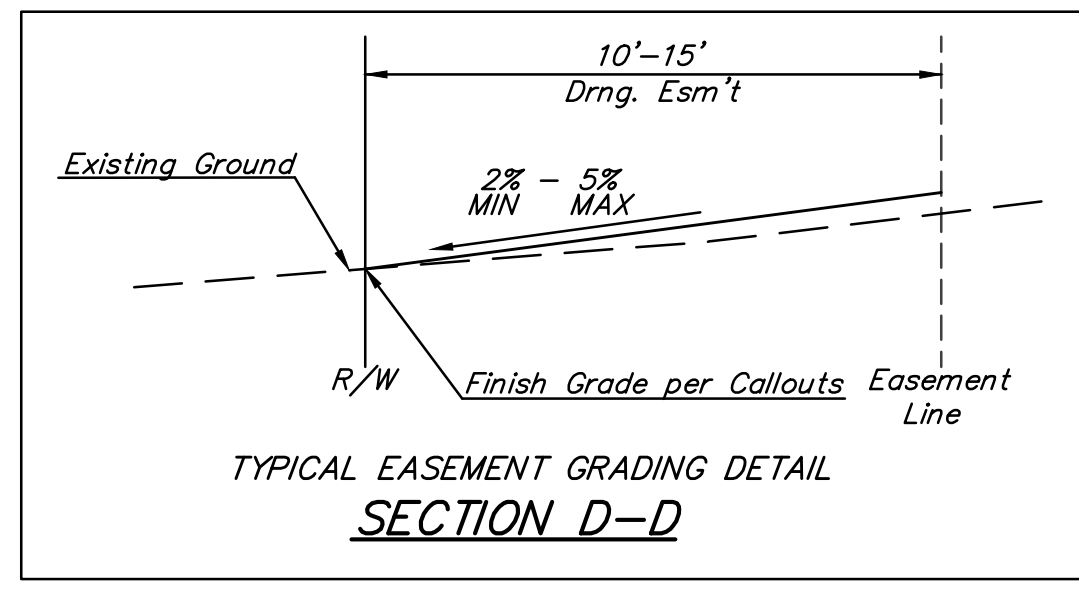
All Easements have been previously graded as part of the Storm Water Drain Project. The Contractor of this project shall fine grade the Easements as indicated to the elevations given on this plan.

The Contractor shall grade the easements as shown to the elevations given on the easement grading plan.

The Contractor shall 'straight' grade the easements between the elevations given. Where a callout designates 'Match', the Contractor will grade to the existing ground elevation.

Any excess excavation from easement grading shall be stockpiled or spread-on site at a location determined by the Developer or Design Engineer.

All cost to be included in the Lump Sum bid item "Easement Grading"



EROSION CONTROL MEASURE	INSTALL	MAINTAIN
BACK OF CURB PROTECTION (LF)	1732	
CONSTRUCTION ENTRANCE (EA)		1
CURB INLET BARRIER (EA)	2	
DITCH CHECK (EA)	2	5
DROP INLET PROTECTION (EA)		
EROSION CONTROL BERM (LF)		916
SILT FENCE (LF)		144
EROSION CONTROL MAT (SY)		
MAINTAIN EROSION CONTROL BMP's (LS)		1

* All existing BMPs including Construction Entrance, Sediment Barriers, Silt Fence, Cut-off Trench, and Erosion Control Mat shall be maintained and repaired if necessary.

Baughman Falcon Falls 6th Addition - Phase I
 Mass Grading & Erosion Control Street Improvements

Baughman Company, P.A. 315 Ellis St. Wichita, KS 67211 P 316-262-7271 F 316-262-0149
 ENGINEERING | SURVEYING | PLANNING | LANDSCAPE ARCHITECTURE

PROJECT NUMBER: 468-85186
 DESIGN: AEG
 DRAWN: JAK
 APPROVED: [Signature]
 DATE: 11/24/15

REVISIONS:

SCALE: Noted
 SHEET: 11 OF 24

E:\Projects\Falcon Falls 6th Addition_1504108\Engineering\Phase 1\Sr_14121E179\STREET_PLANS.dwg