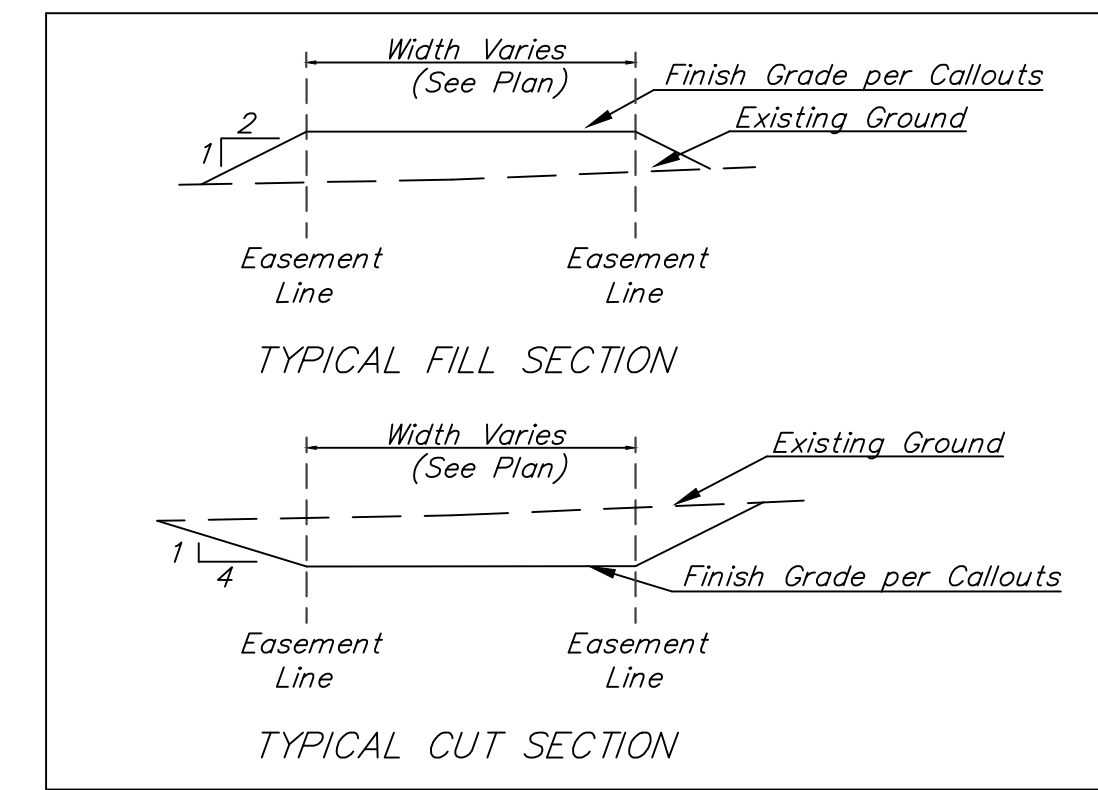
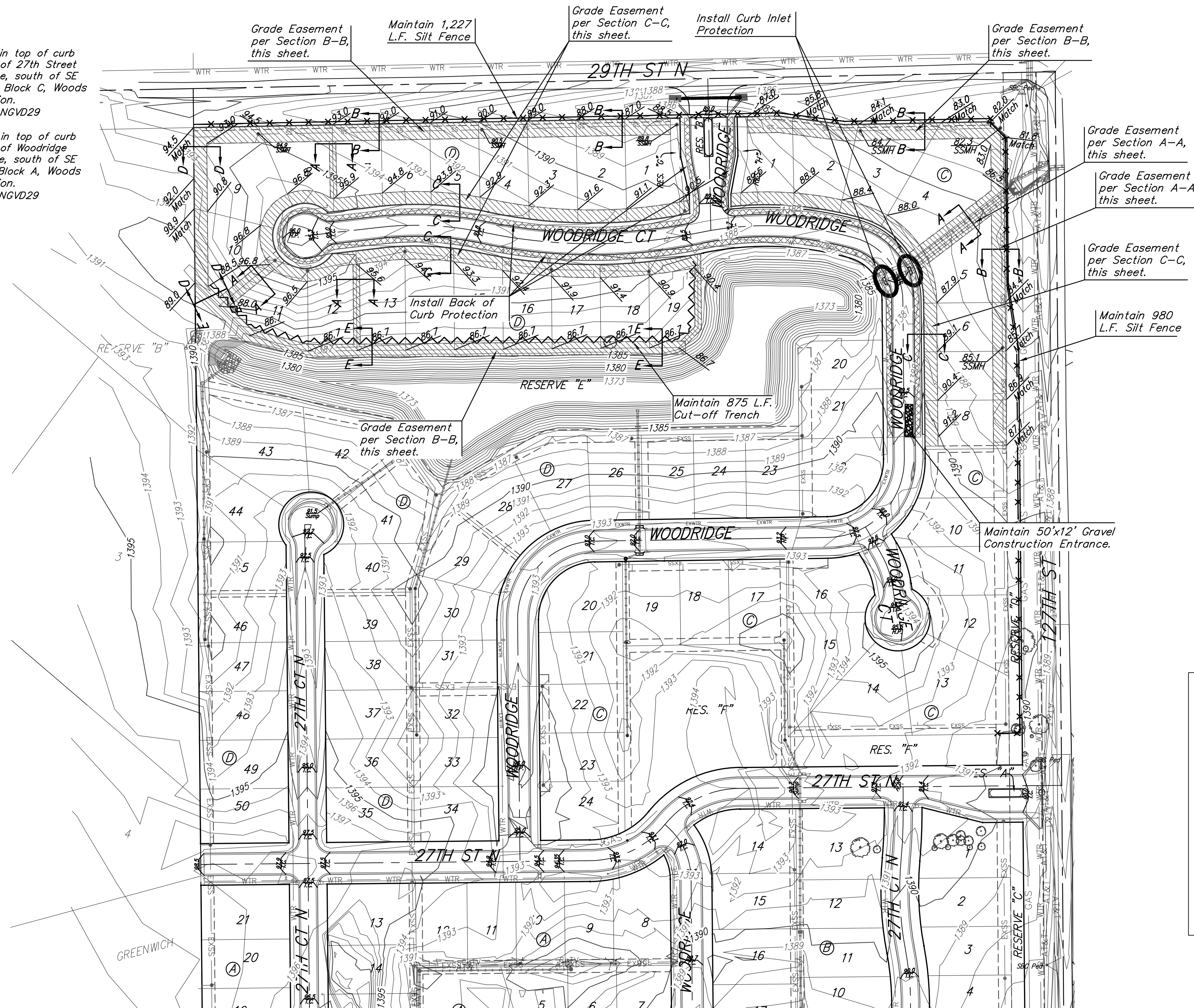


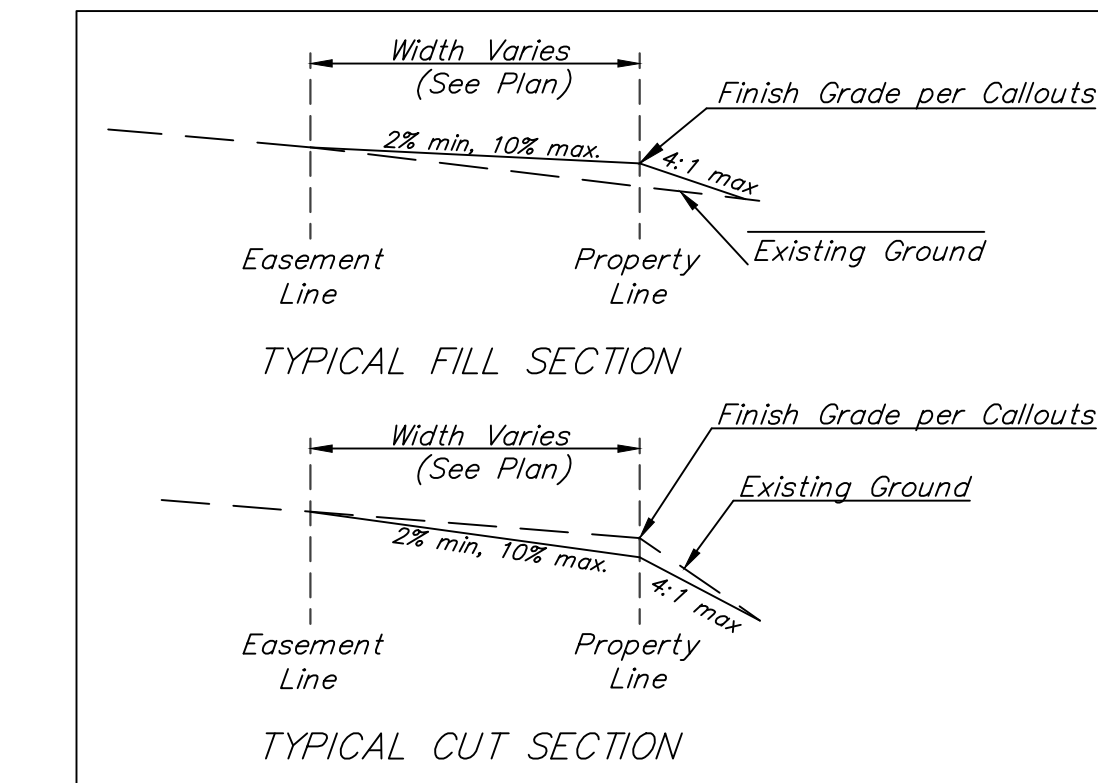
BENCHMARKS:

BM #1: "□" cut in top of curb near intersection of 27th Street North & Woodridge, south of SE corner of Lot 24, Block C, Woods North 3rd Addition.
Elev. = 1392.97 NGVD29

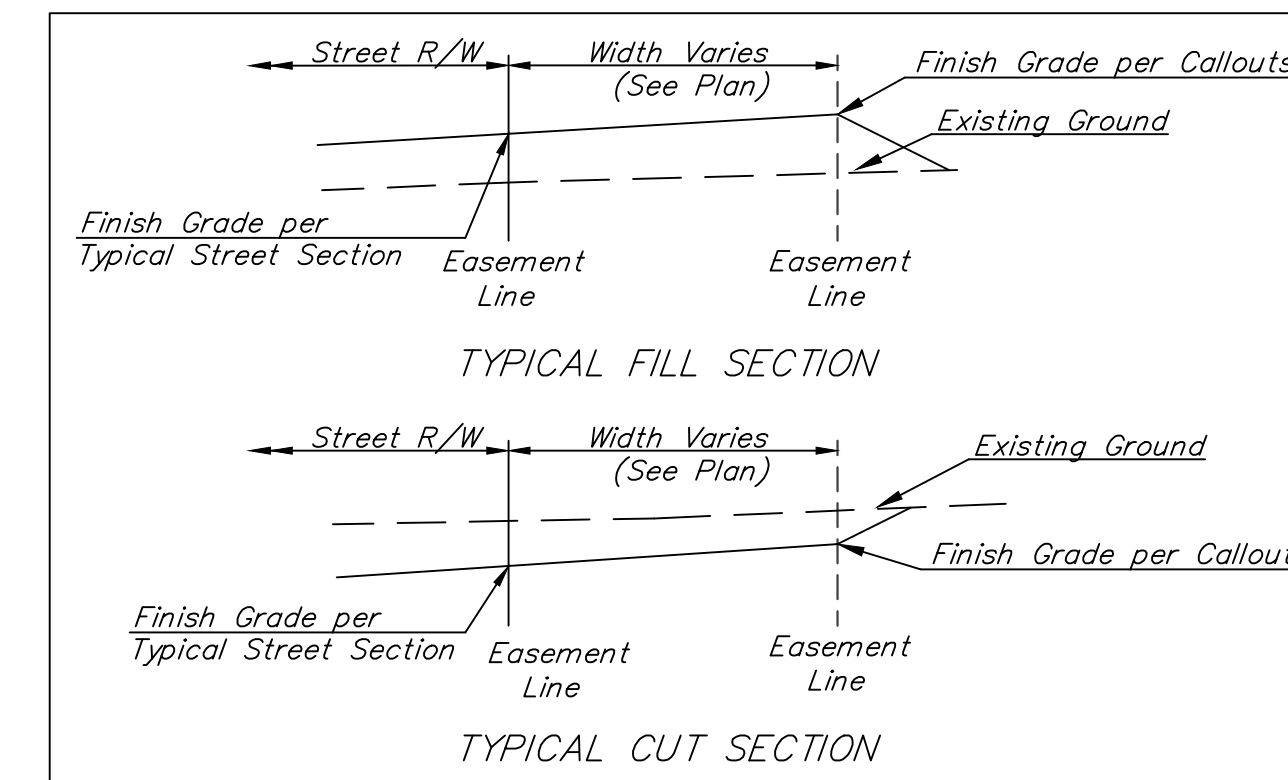
BM #2: "□" cut in top of curb near intersection of Woodridge Court & Woodridge, south of SE corner of Lot 6, Block A, Woods North 3rd Addition.
Elev. = 1390.10 NGVD29



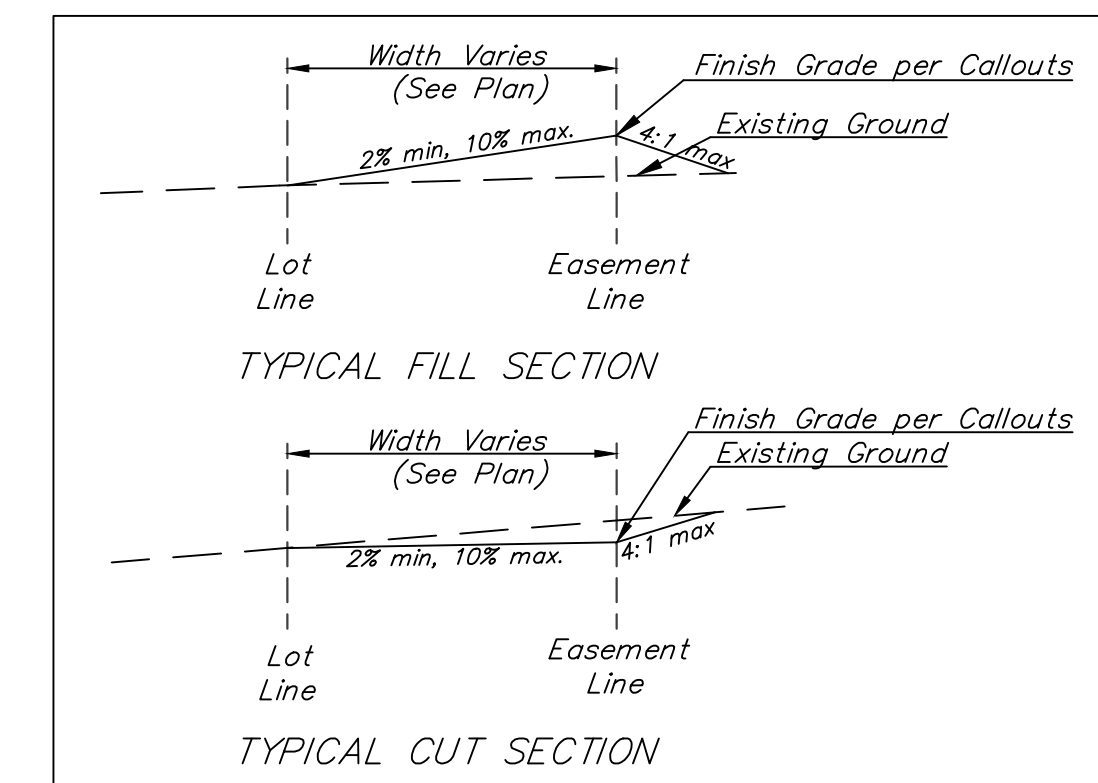
SECTION A-A



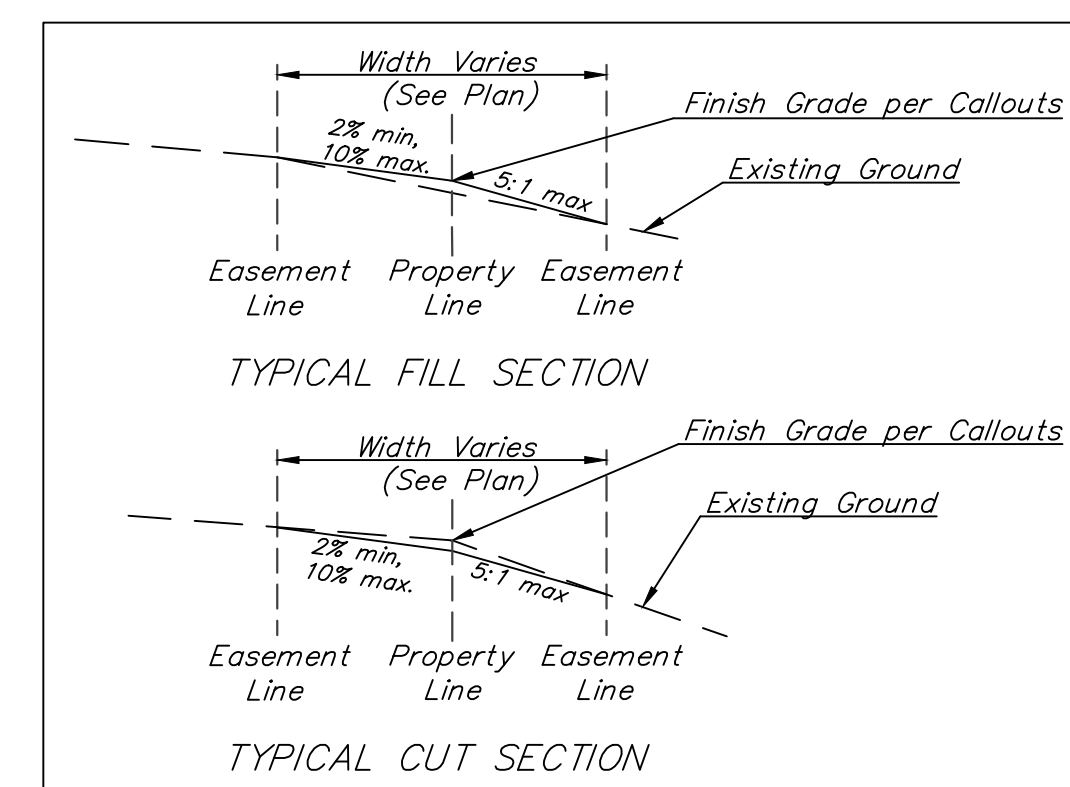
SECTION B-B



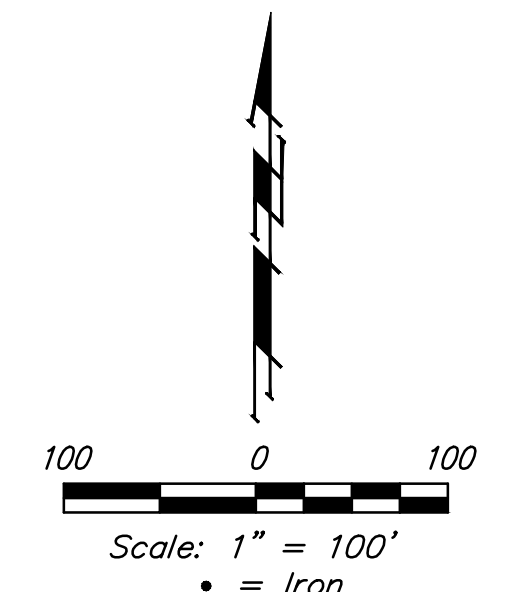
SECTION C-C



SECTION D-D



SECTION E-E



= Easements To Be Graded

All Easements have been previously graded as part of the Storm Water Drain Project. The Contractor of this project shall fine grade the Easements as indicated to the elevations given on this plan.

The Contractor shall grade the easements as shown to the elevations given on the easement grading plan.

The Contractor shall 'straight' grade the easements between the elevations given. Where a callout designates 'Match', the Contractor will grade to the existing ground elevation.

Excess excavation from easement grading and from sanitary sewer construction shall be placed on the lots as indicated to the elevations shown.

All cost to be included in the Lump Sum bid item "Easement Grading"

NOTES:

1. Contractor shall make sure all erosion control is in place before project is accepted. This plan represents the minimum standard. Any additional erosion control measures shall be installed by the Contractor as needed.

2. This Plan is Not To Be Used As A Comprehensive Grading Plan. All Spot Elevations Are Proposed & Subject To Change.

All areas disturbed during construction shall be seeded, mulched, and fertilized as per Cover Sheet General Notes.

EROSION CONTROL PLAN LEGEND

- DROP INLET PROTECTION
- CURB INLET PROTECTION
- DITCH CHECKS
- SILT FENCING
- CUT-OFF TRENCH
- BACK OF CURB PROTECTION
- EROSION CONTROL MAT
- TEMPORARY DITCH

EROSION CONTROL MEASURE	INSTALL	MAINTAIN	REMOVE
CUT-OFF TRENCH	0	875	0
BACK OF CURB PROTECTION (LF)	2,769	0	0
CONSTRUCTION ENTRANCE (EA)	0	1	1
CURB INLET BARRIER (EA)	2	0	0
DITCH CHECK (EA)	0	0	0
DROP INLET PROTECTION (EA)	0	0	0
EROSION CONTROL (LS)	0	0	0
EROSION CONTROL BERM (LF)	0	0	0
SILT FENCE (LF)	0	2,207	0
EROSION CONTROL MAT (SY)	0	0	0

* ALL EXISTING BMPs INCLUDING CONSTRUCTION ENTRANCE, SEDIMENT BARRIERS, SILT FENCE, CUT-OFF TRENCH, AND EROSION CONTROL MAT SHALL BE MAINTAINED AND REPAIRED IF NECESSARY.

Baughman Woods North 3rd Addition - Phase IV
EROSION CONTROL
Street Improvements

Baughman Company, P.A. 315 Ellis St. Wichita, KS 67211 P 316-262-7271 F 316-262-0149
ENGINEERING | SURVEYING | PLANNING | LANDSCAPE ARCHITECTURE

PROJECT NUMBER 472-85049	DESIGN AEG	DRAWN JAK
REVISIONS:	APPROVED	DATE 3/31/16
	SCALE Noted	SHEET 13 OF 24

Austin E. Gotlib
17919
4/5/16
KANSAS
PROFESSIONAL ENGINEER

E:\Projects\Woods North 3rd\11-12-P947\Engineering\Phase 4\STR_1508E280\STR PLANS.dwg