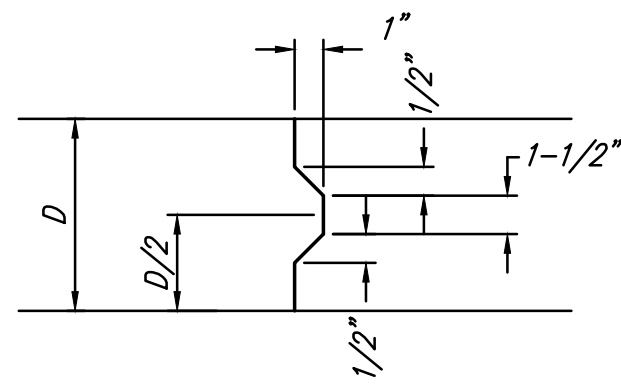
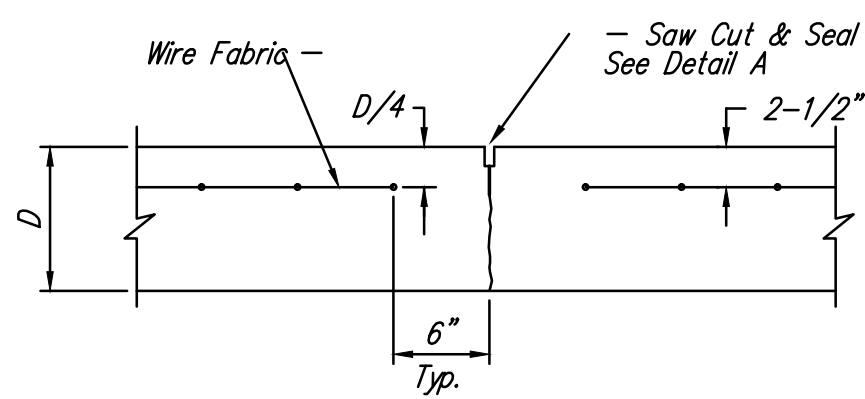


EXPANSION JOINT (E.J.)

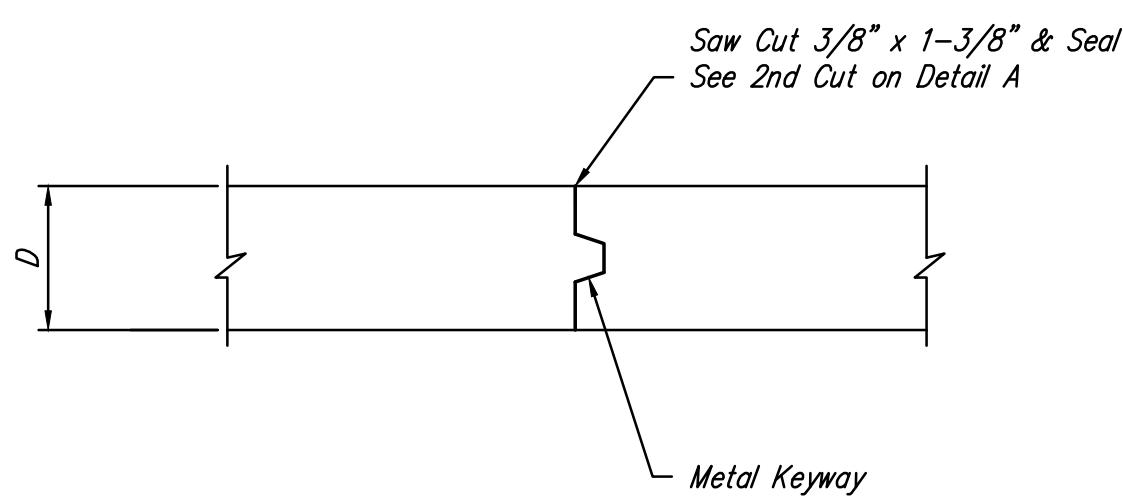
NOTE: Extra Thickness to be Subsidiary to Price of Square Yards Pavement



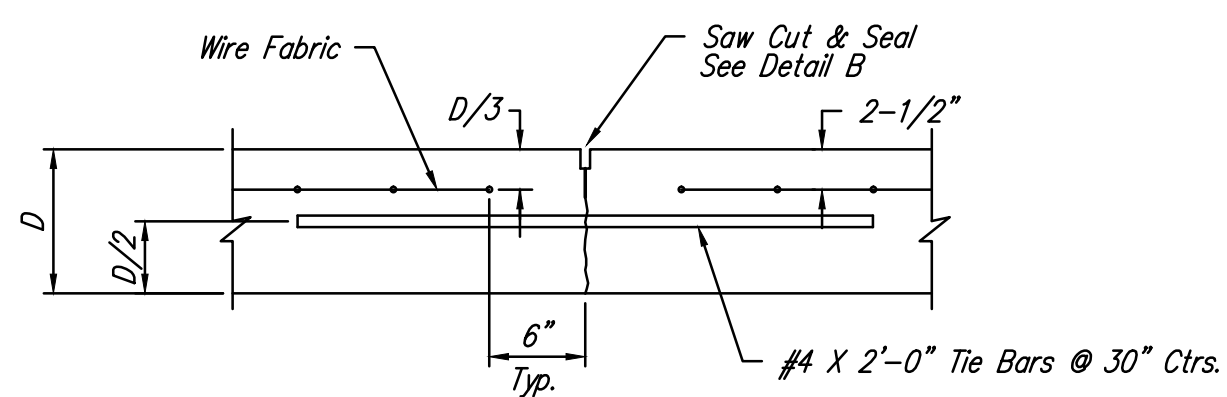
KEYWAY DETAIL



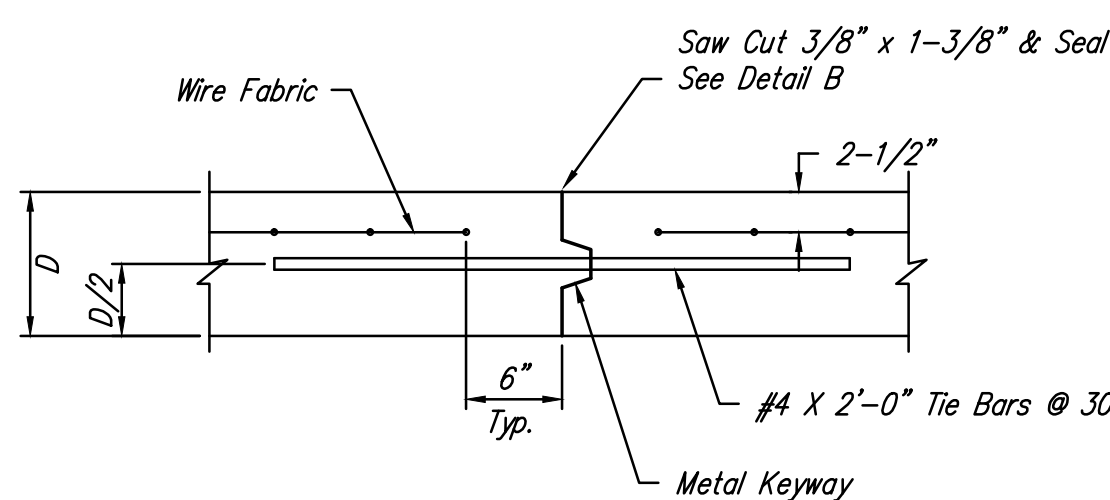
CONTRACTION JOINT DETAIL (C.J.)



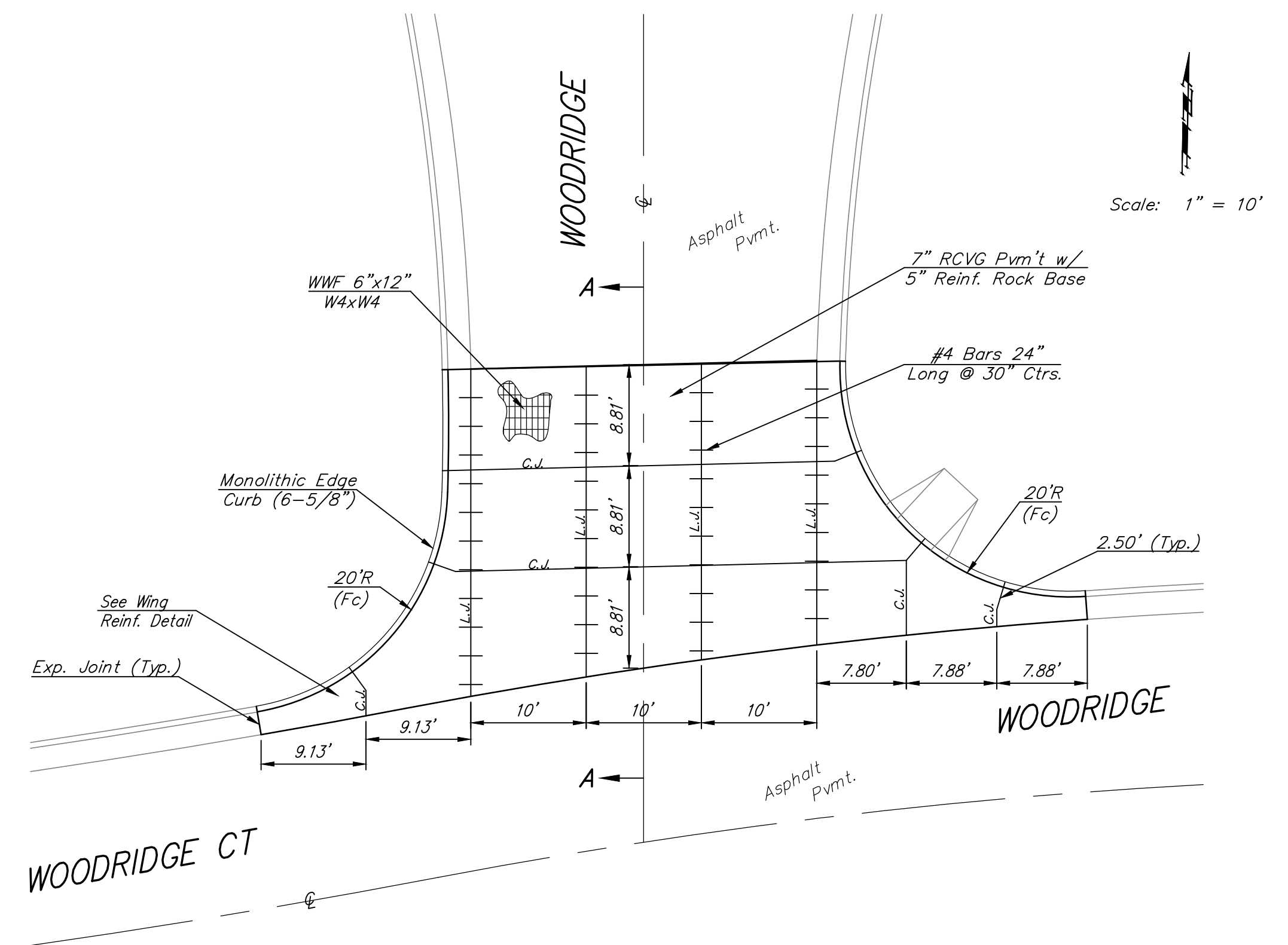
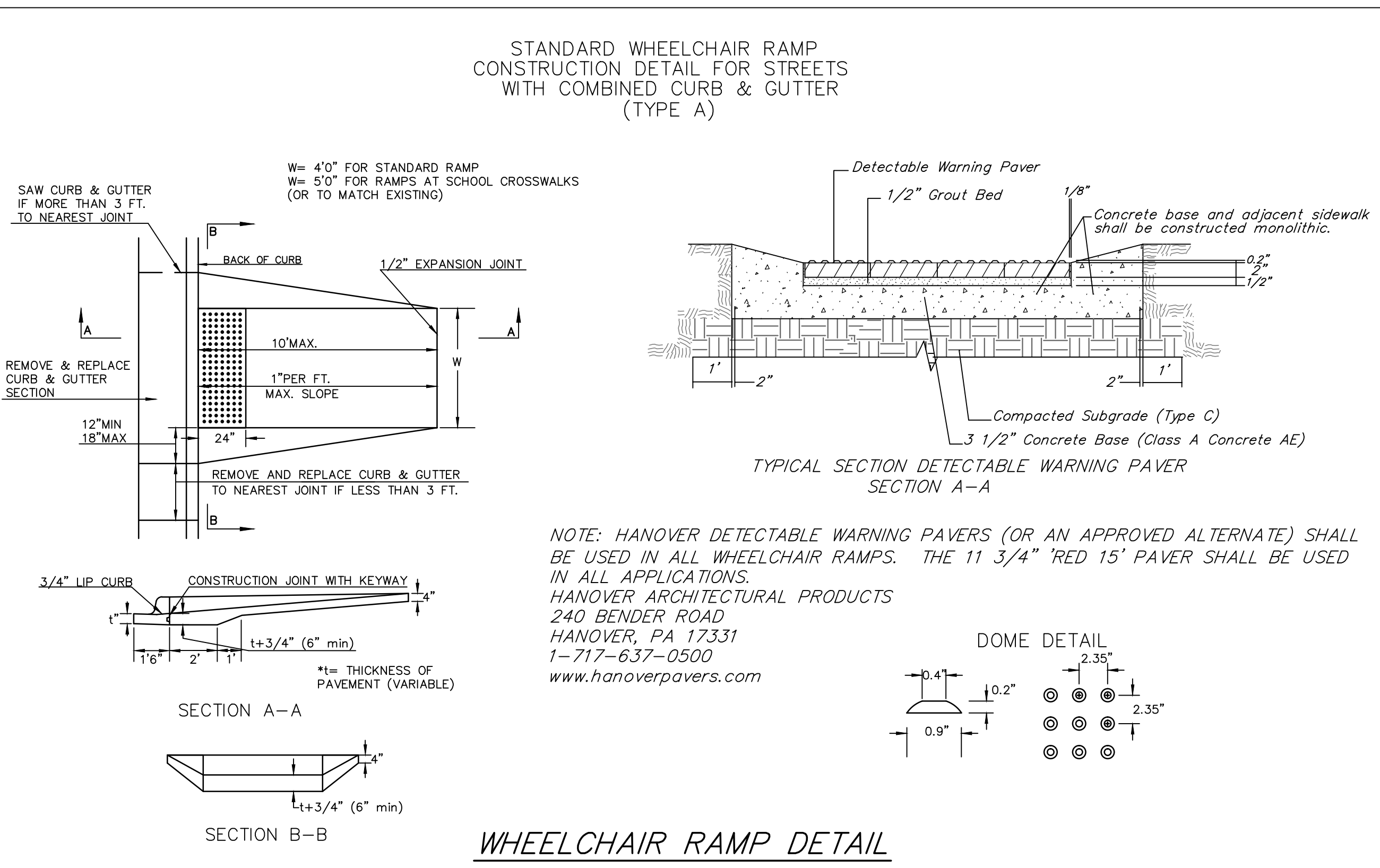
LONGITUDINAL JOINT DETAIL (L.J.) "A"



LONGITUDINAL JOINT DETAIL (L.J.)

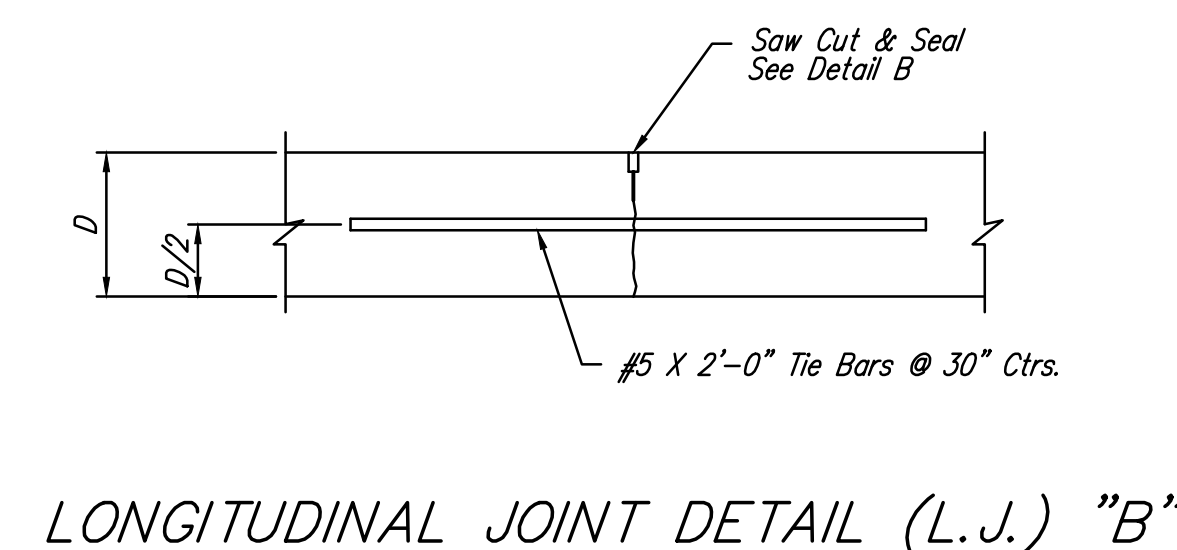


OPTIONAL LONGITUDINAL JOINT DETAIL (L.J.) (CONSTRUCTION JOINT)

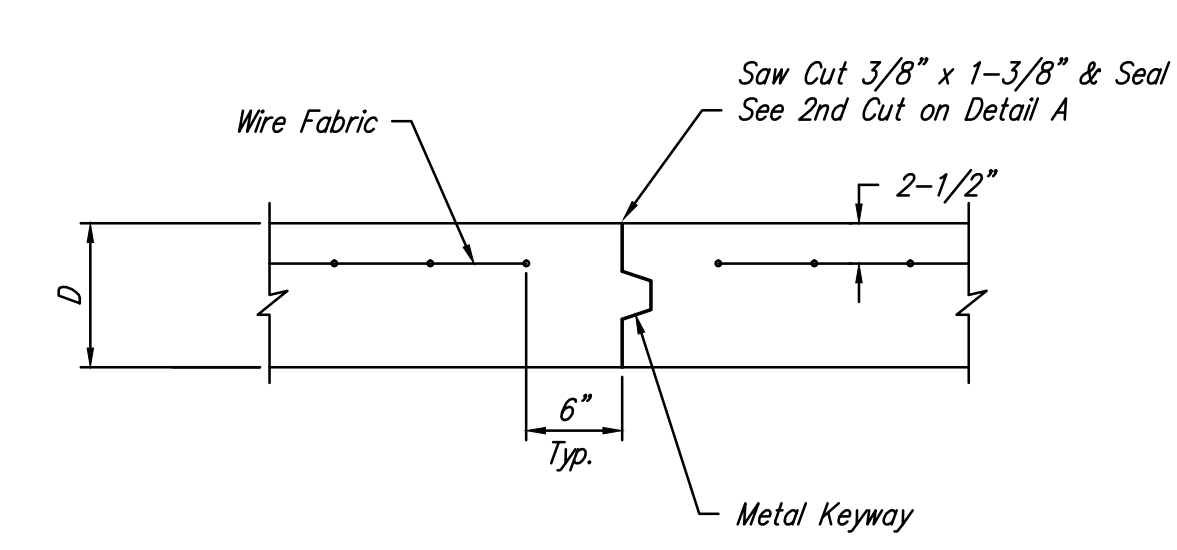


REINFORCED VALLEY GUTTER DETAIL

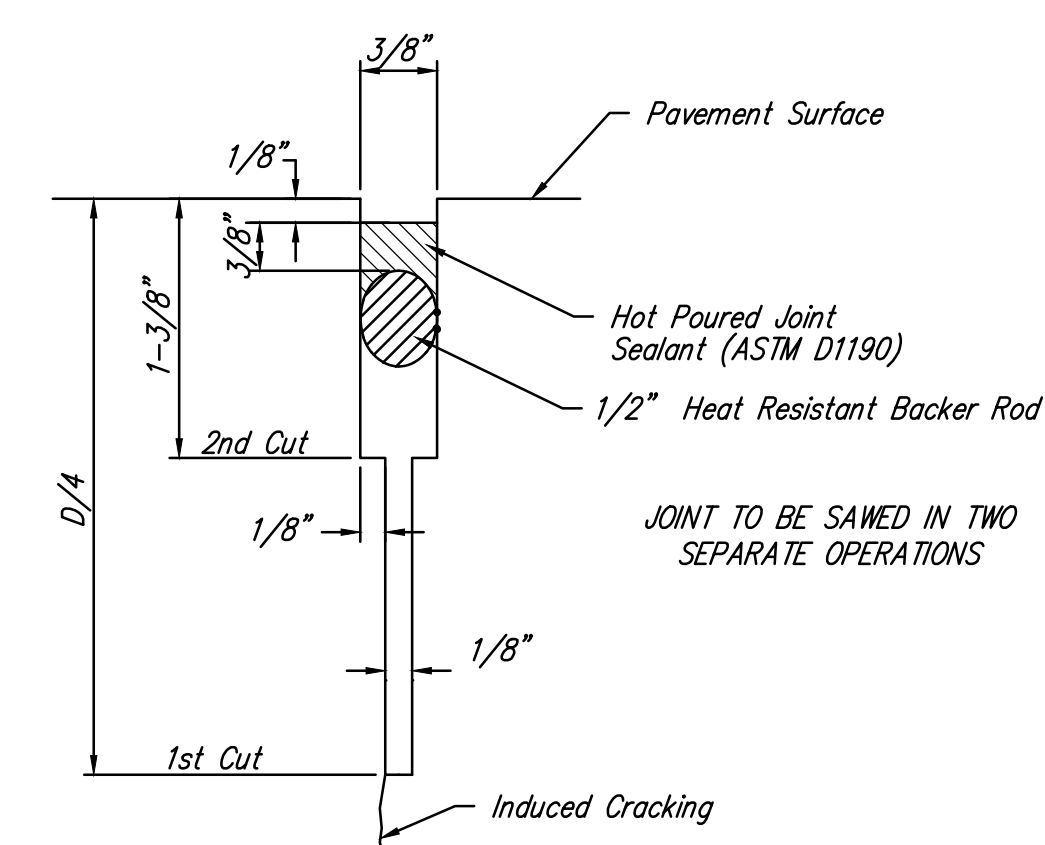
6" x 12" W4XW4 WIRE FABRIC REINFORCING SHALL BE PLACED SUCH THAT THE WIRES WITH THE 6" SPACING WILL RUN PARALLEL WITH THE LONGITUDINAL JOINT.



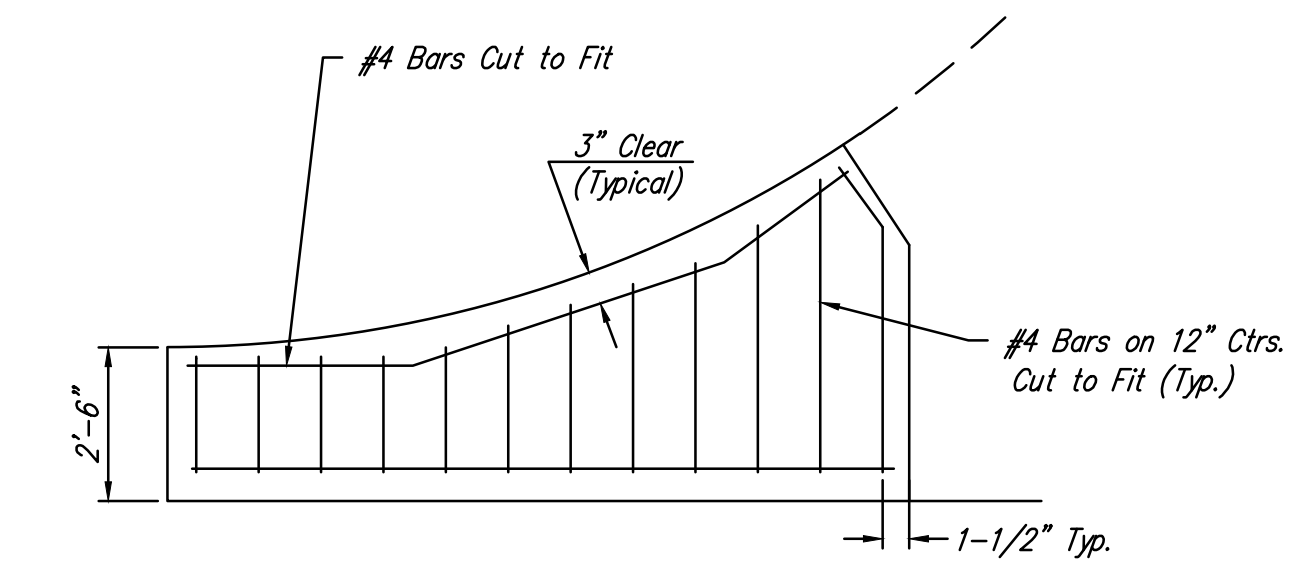
LONGITUDINAL JOINT DETAIL (L.J.) "B"



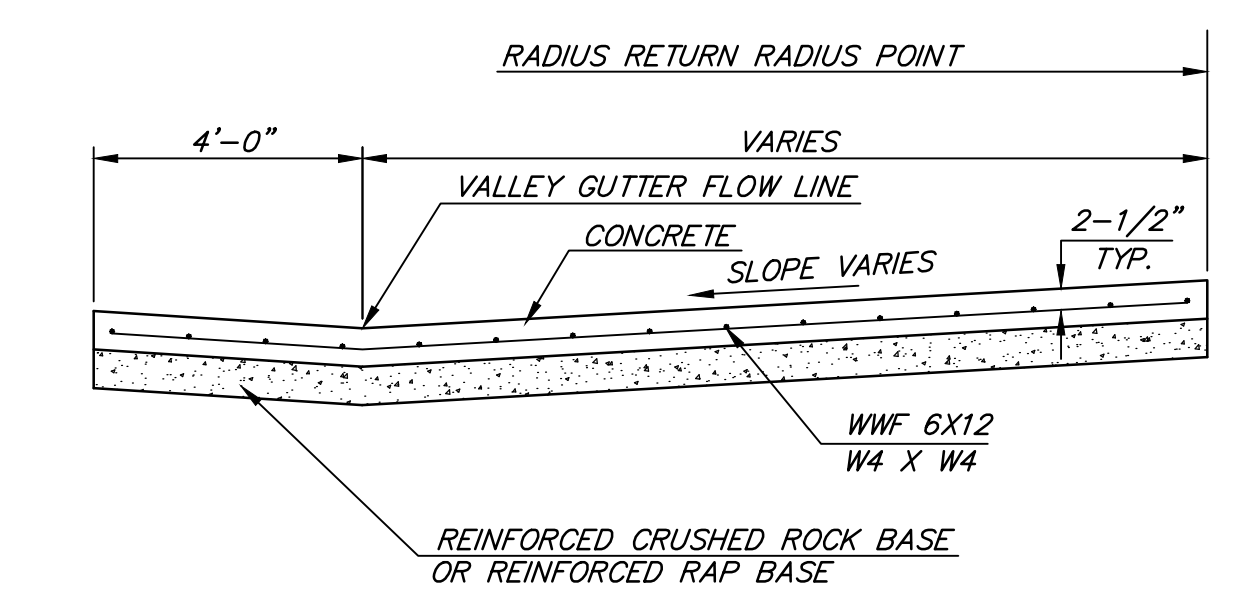
OPTIONAL CONTRACTION JOINT (CONSTRUCTION JOINT)



SAW JOINT DETAIL



WING REINFORCING DETAIL



SECTION A-A

Baughman		Woods North 3rd Addition - Phase IV VALLEY GUTTER DETAILS WHEELCHAIR RAMP DETAILS	
Baughman Company, P.A. 315 Ellis St. Wichita, KS 67211 P 316-262-7271 F 316-262-0149 ENGINEERING SURVEYING PLANNING LANDSCAPE ARCHITECTURE			
PROJECT NUMBER	DESIGN	DRAWN	
	AEG	JAK	
REVISIONS:	APPROVED	DATE	
		1/16	
	SCALE		
	1" = 20'		
	SHEET		
		5 OF 24	