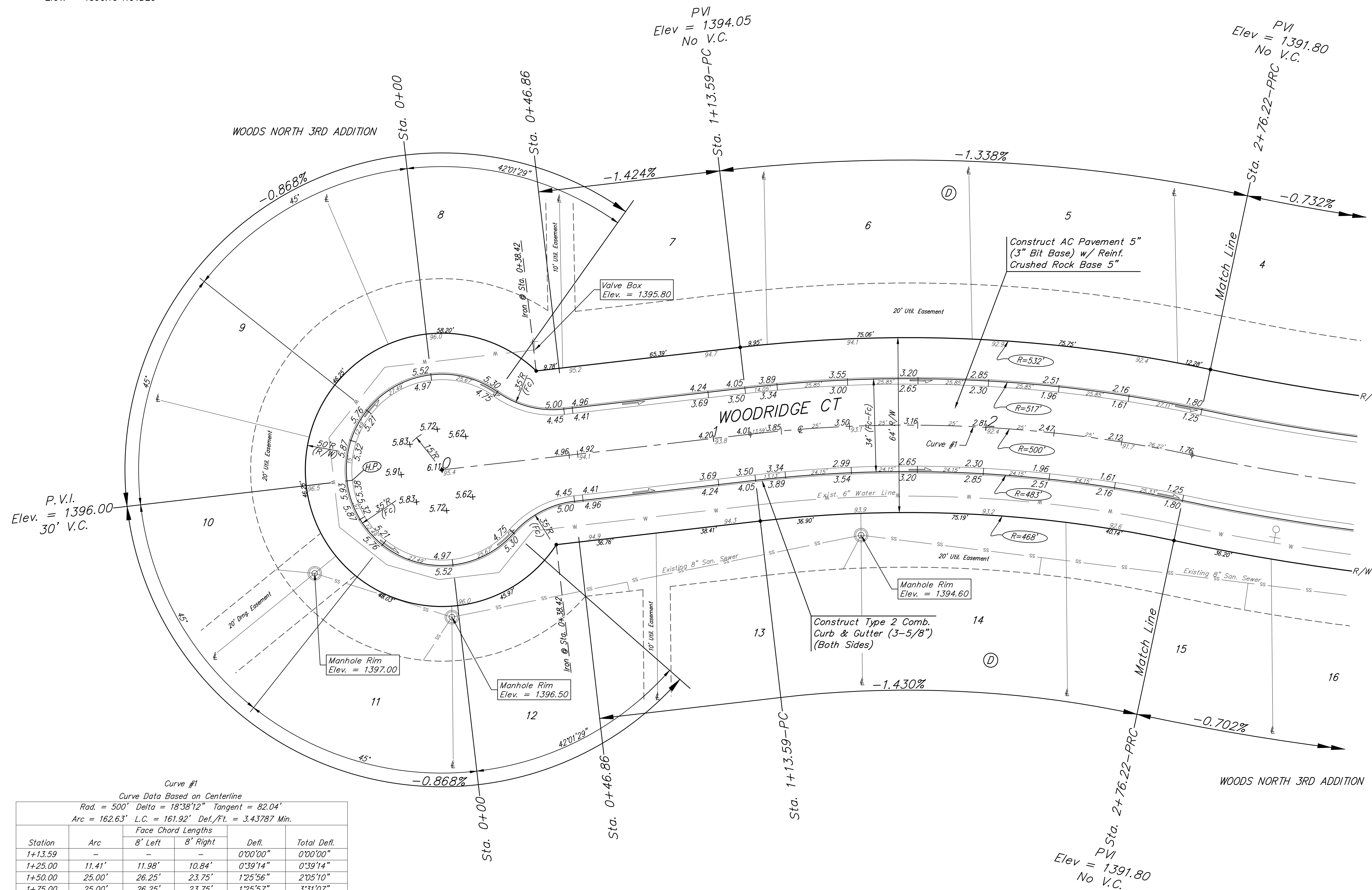
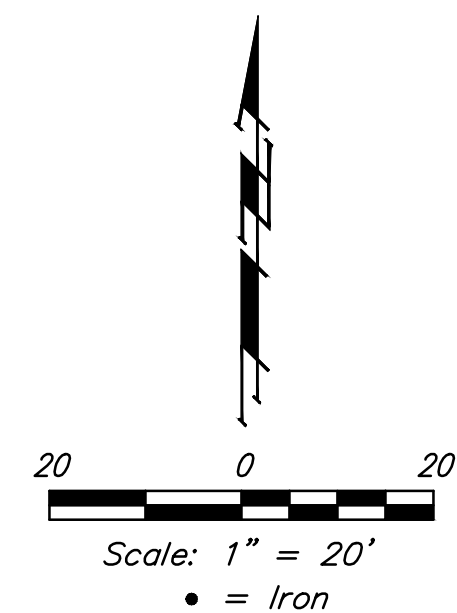


BENCHMARKS:
 BM #1: "□" cut in top of curb near intersection of 27th Street North & Woodridge, south of SE corner of Lot 24, Block C, Woods North 3rd Addition.
 Elev. = 1392.97 NGVD29

BM #2: "□" cut in top of curb near intersection of Woodridge Court & Woodridge, south of SE corner of Lot 6, Block A, Woods North 3rd Addition.
 Elev. = 1390.10 NGVD29



Curve #1

Curve Data Based on Centerline
 Rad. = 500' Delta = 18°38'12" Tangent = 82.04'
 Arc = 162.63' L.C. = 161.92' Def./Ft. = 3.43787 Min.

Station	Arc	Face Chord Lengths			Total Defl.
		8' Left	8' Right	Defl.	
1+13.59	-	-	-	0'00'00"	0'00'00"
1+25.00	11.41'	11.98'	10.84'	0'39'14"	0'39'14"
1+50.00	25.00'	26.25'	23.75'	1'25'56"	2'05'10"
1+75.00	25.00'	26.25'	23.75'	1'25'57"	3'31'07"
2+00.00	25.00'	26.25'	23.75'	1'25'57"	4'57'04"
2+25.00	25.00'	26.25'	23.75'	1'25'57"	6'23'01"
2+50.00	25.00'	26.25'	23.75'	1'25'57"	7'48'58"
2+75.00	25.00'	26.25'	23.75'	1'25'56"	9'14'54"
2+76.22	1.22'	1.28'	1.16'	0'04'12"	9'19'06"

Type 2 Comb. Curb & Gutter (3-5/8") to be constructed on the pavement on this sheet. Top of curb elevation are given for full height curb (6-5/8").



Baughman		Woods North 3rd Addition - Phase IV	
WOODRIDGE CT		Sta. 0+00 to Sta. 2+76.22	
Baughman Company, P.A. 315 Ellis St. Wichita, KS 67211 P 316-262-7271 F 316-262-0149 ENGINEERING SURVEYING PLANNING LANDSCAPE ARCHITECTURE			
PROJECT NUMBER 472-85049	DESIGN AEG	DRAWN JAK	DATE 3/31/16
REVISIONS:	APPROVED		
	SCALE Noted		
	SHEET		