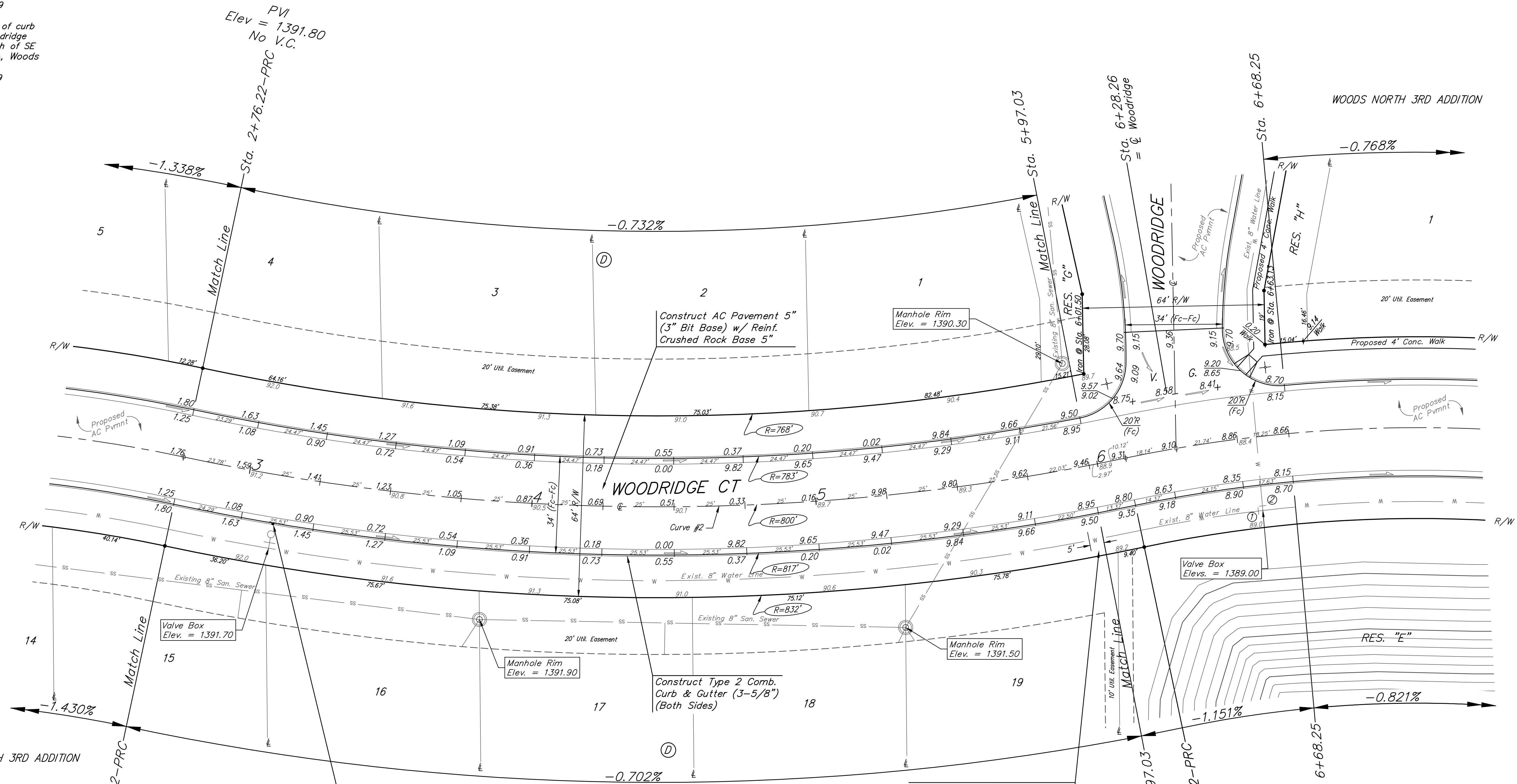
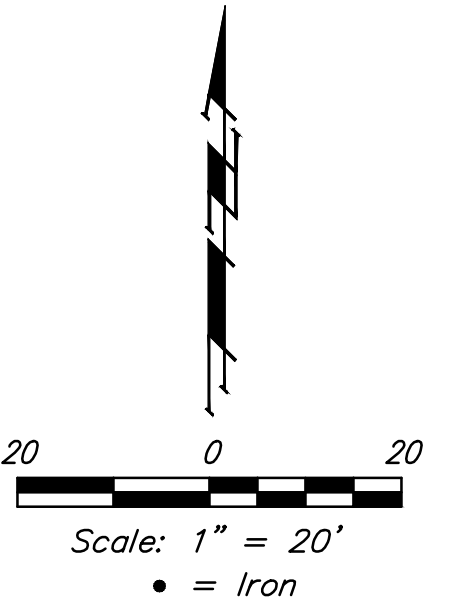


BENCHMARKS:

BM #1: "□" cut in top of curb near intersection of 27th Street North & Woodridge, south of SE corner of Lot 24, Block C, Woods North 3rd Addition.
Elev. = 1392.97 NGVD29

BM #2: "□" cut in top of curb near intersection of Woodridge Court & Woodridge, south of SE corner of Lot 6, Block A, Woods North 3rd Addition.
Elev. = 1390.10 NGVD29



Sta. 3+11.03, 17.25' Rt.
Install subdivision benchmark (Flat survey marker No. 8134-08 3" top diameter) in top of curb. Cost shall be incidental to L.F. curb & gutter.

Curve #2
Curve Data Based on Centerline
Rad. = 800' Delta = 23°54'50" Tangent = 169.42'
Arc = 333.90' L.C. = 331.48' Def./Ft. = 2.14860 Min.

Station	Arc	Face Chord Lengths		Defl.	Total Defl.
		8' Left	8' Right		
2+76.22	-	-	-	0°00'00"	0°00'00"
3+00.00	23.78'	23.04'	24.52'	0°51'06"	0°51'06"
3+25.00	25.00'	24.22'	25.78'	0°53'43"	1°44'49"
3+50.00	25.00'	24.22'	25.78'	0°53'42"	2°38'31"
3+75.00	25.00'	24.22'	25.78'	0°53'43"	3°32'14"
4+00.00	25.00'	24.22'	25.78'	0°53'43"	4°25'57"
4+25.00	25.00'	24.22'	25.78'	0°53'43"	5°19'40"
4+50.00	25.00'	24.22'	25.78'	0°53'43"	6°13'23"
4+75.00	25.00'	24.22'	25.78'	0°53'43"	7°07'06"
5+00.00	25.00'	24.22'	25.78'	0°53'43"	8°00'49"
5+25.00	25.00'	24.22'	25.78'	0°53'43"	8°54'32"
5+50.00	25.00'	24.22'	25.78'	0°53'43"	9°48'15"
5+75.00	25.00'	24.22'	25.78'	0°53'42"	10°41'57"
5+97.03	22.03'	21.34'	22.72'	0°47'20"	11°29'17"
6+00.00	2.97'	2.88'	3.06'	0°06'23"	11°35'40"
6+10.12	10.12'	9.80'	10.44'	0°21'45"	11°57'25"

Trans. from Type 2 Comb. Curb & Gutter (3-5/8") to Type 4 Comb. Curb & Gutter (6-5/8") in 5' (Both Sides)

PVI
Elev. = 1389.50
No V.C.

PVI
Elev. = 1388.70
No V.C.



WOODRIDGE CT
Sta. Sta. 2+76.22 to Sta. 5+97.03

Baughman Engineering, P.A. 315 Ellis St. Wichita, KS 67211 P 316-262-7271 F 316-262-0149
ENGINEERING | SURVEYING | PLANNING | LANDSCAPE ARCHITECTURE

PROJECT NUMBER 472-85049	DESIGN AEG	DRAWN JAK
REVISIONS:	APPROVED	DATE 3/31/16
	SCALE Noted	SHEET 9 OF 24

Type 2 Comb. Curb & Gutter (3-5/8") to be constructed on the pavement on this sheet. Top of curb elevation are given for full height curb (6-5/8").