

# GENERAL NOTES:

- The Contractor shall comply with all applicable safety regulations. All construction shall be completed following current City Standard Specifications and Special Provisions.
- Contractor will be required to provide notice to utility companies a minimum of seventy-two (72) hours prior to any excavation, as follows:  
 Kansas One-Call 687-2470  
 The Contractor must notify the following in case of an emergency:  
 AT&T 1-800-246-8464  
 Black Hills Energy 1-800-694-8989  
 City of Wichita Water 1-316-268-4555  
 City of Wichita Sewer 1-316-268-4073  
 City of Wichita Stormwater 1-316-268-4090  
 City of Wichita Traffic 1-316-268-4034  
 Cox Communications 1-888-249-3530  
 Kansas Gas Service 1-888-482-4950  
 Westar Energy 1-800-544-4857
- Utility service lines, poles, etc. are to be adjusted as necessary by others prior to construction unless the plans specifically call for their adjustment by the Contractor or unless the plans specifically identify a utility to be adjusted by its owner during construction. Existing utilities and their location, as shown on the plans, represent the best information obtainable for design. The Contractor will be required to work around existing utilities within the right-of-way which do not conflict with proposed construction.
- Rubble from the removal of miscellaneous structures and excess excavation which is to be washed shall be disposed of on sites to be provided by the Contractor. These sites shall be approved by the Engineer as to suitability, appearance and site location. Locations, in the opinion of the Engineer, that will leave an unsightly appearance will not be approved. All disposal sites must be approved by the Kansas Department of Health and Environment. Material either stockpiled or disposed of in a flood plain would require a Kansas State Board of Agriculture permit. Any material dumped in waters of the United States or wetlands is subject to U.S. Corps of Engineers permitting regulations. Any material buried or stockpiled beyond approved construction limits would require additional archaeological investigations unless buried in a previously approved borrow location.
- Trees and shrubs in public right-of-way which are in direct conflict with proposed new construction shall be removed by the Contractor with the Engineer's approval. Trees and shrubs which are not in direct conflict with proposed new construction shall be saved and protected from damage.
- The Contractor shall give all property owners and/or tenants of developed property abutting the construction of this project a minimum of ten (10) days notice prior to start of construction.
- The Contractor shall be responsible for preserving property irons. The Contractor will be required to re-establish any property irons which are damaged or destroyed by his construction operations. Such irons shall be re-established by a licensed land surveyor in accordance with state laws.
- The Water Distribution Division shall field locate water valve one time during construction when requested by the Contractor. It shall be the Contractor's responsibility to preserve such field locations during the construction process. Water valves, valve boxes or fire hydrants damaged during construction shall be repaired by Contractor at his own expense. Valve boxes and water meters within the project limits shall be adjusted to match field grades.
- The Contractor shall notify the consultant engineer and Tom Mason with the City at 316-268-4574 with the anticipated construction start date and notify them of project completion. Staking and inspection for this project will be the responsibility of the Contractor.
- If traffic is impacted by construction, a traffic control plan must be submitted and approved by the City Traffic Engineer, Brian Coon at [traffic@wichita.gov](mailto:traffic@wichita.gov) before construction can begin. The Contractor shall be responsible for all traffic control measures to facilitate construction. All construction zone markings and signage shall conform to the latest version of Manual on Uniform Traffic Control Devices (MUTCD) as published by the US Dept. of Transportation, Federal Highway Administration. All costs associated with construction markings and signage shall be the Contractors responsibility.
- All elevations shown are U.S.G.S. Datum (NAVD 88).
- All areas disturbed during construction that will not be under proposed pavement shall be restored to match existing conditions.

- A portion of excess excavated material shall be mounded around manholes which extend more than one (1) foot above the existing ground. Such mound shall be constructed with new development a six (6) foot diameter flat top with 4 to 1 side slopes down to the original ground. The elevation of the flat top of the mound shall be 0.4 foot below the top to the manhole.
- Geotechnical report available upon request.
- Contractor shall limit the extent of trench openings overnight and weekends to less than 50 feet.
- Contractor shall provide positive drainage away from all manhole covers.
- City maintenance of storm sewer ends at right-of-way or easement line.
- Any sidewalk, drive approach, or street pavement removed to construct project must have a pavement cut permit and be replaced by the City contractor. Permits can be obtained by calling 316-268-4501 or 316-268-4480.
- The inspecting firm shall submit to the City Stormwater Maintenance Division a digital copy of the CCTV inspection of the conduits and structures following construction. The digital file formation shall be compatible with the City input template. A copy of the template is available upon request at 316-268-4090.
- All existing and proposed erosion control measures including silt fencing, erosion control mat, straw bales, inlet barriers, and const. entrance shall be maintained throughout construction by the contractor and until project is accepted by the City of Wichita. The on-site engineer shall complete weekly reports on the status of erosion control measures. The contractor shall be required to comply with maintenance and/or replacement of erosion control measures as determined by the on-site engineer until project is accepted by City of Wichita. Maintenance and/or replacement of erosion control measures to be paid by L.S. bid item "Site Restoration".
- All excess excavation shall remain on-site and shall be stockpiled or spread at a location determined by the engineer.
- All areas disturbed during construction shall be seeded, mulched, and fertilized as follows (Permanent Seeding):  
 Seed: Kansas Premium Fescue Blend: 8 lbs./1000 sq. ft.  
 Mulch: Prairie Hay: 2 tons/acre  
 Fertilizer: 12-24-12: 850 lbs./acre  
 All costs associated with seeding, mulching, and fertilizing shall be included in bid item "Seeding". All seeding operations shall conform to City of Wichita Standard Specifications.
- The Contractor shall not begin work on the project until the Project Inspector is assigned and on site. Any work completed without inspection will be required to be uncovered for inspection at the Contractor's expense.

## Benchmarks

BM #1: "X" Chiseled on Top of Concrete Drive  
 Elev. = 1352.63 (NAVD 88)

BM #2: Chiseled cross on top of curb, 959' E & 4.4' N of the SW Cor., SW1/4, Sec. 32, T-26-S, R-1-W  
 Elev. = 1352.18 (NAVD 88)

# STORM SEWER IMPROVEMENTS

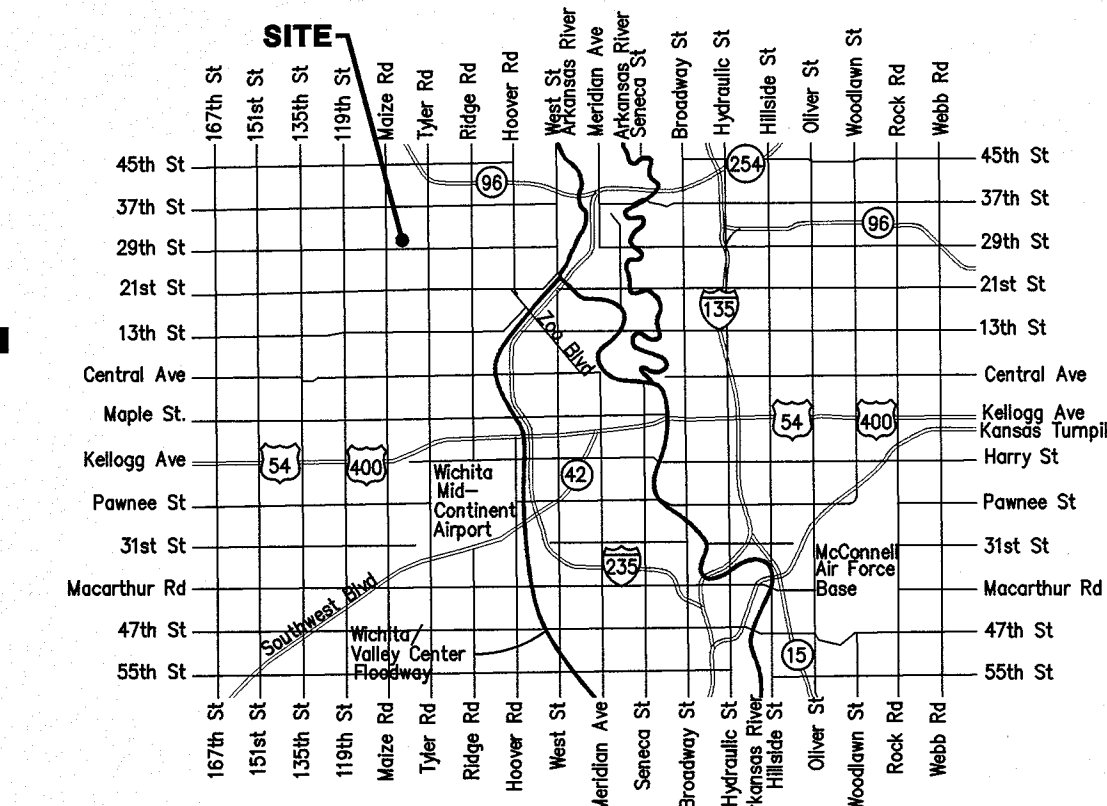
to serve

# LOT 4, MAIZE & 29TH COMM. ADD.

## CITY OF WICHITA, KANSAS

Gary Janzen, P.E. City Engineer

Project Number  
 0309 PPD (607861)

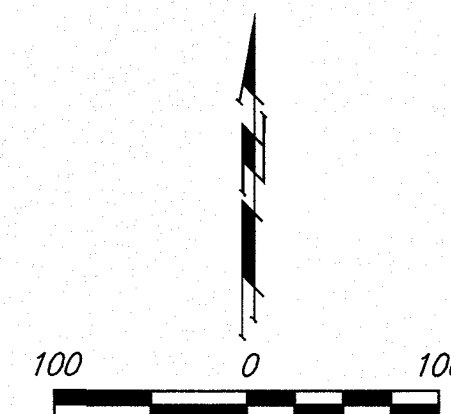


Vicinity Map

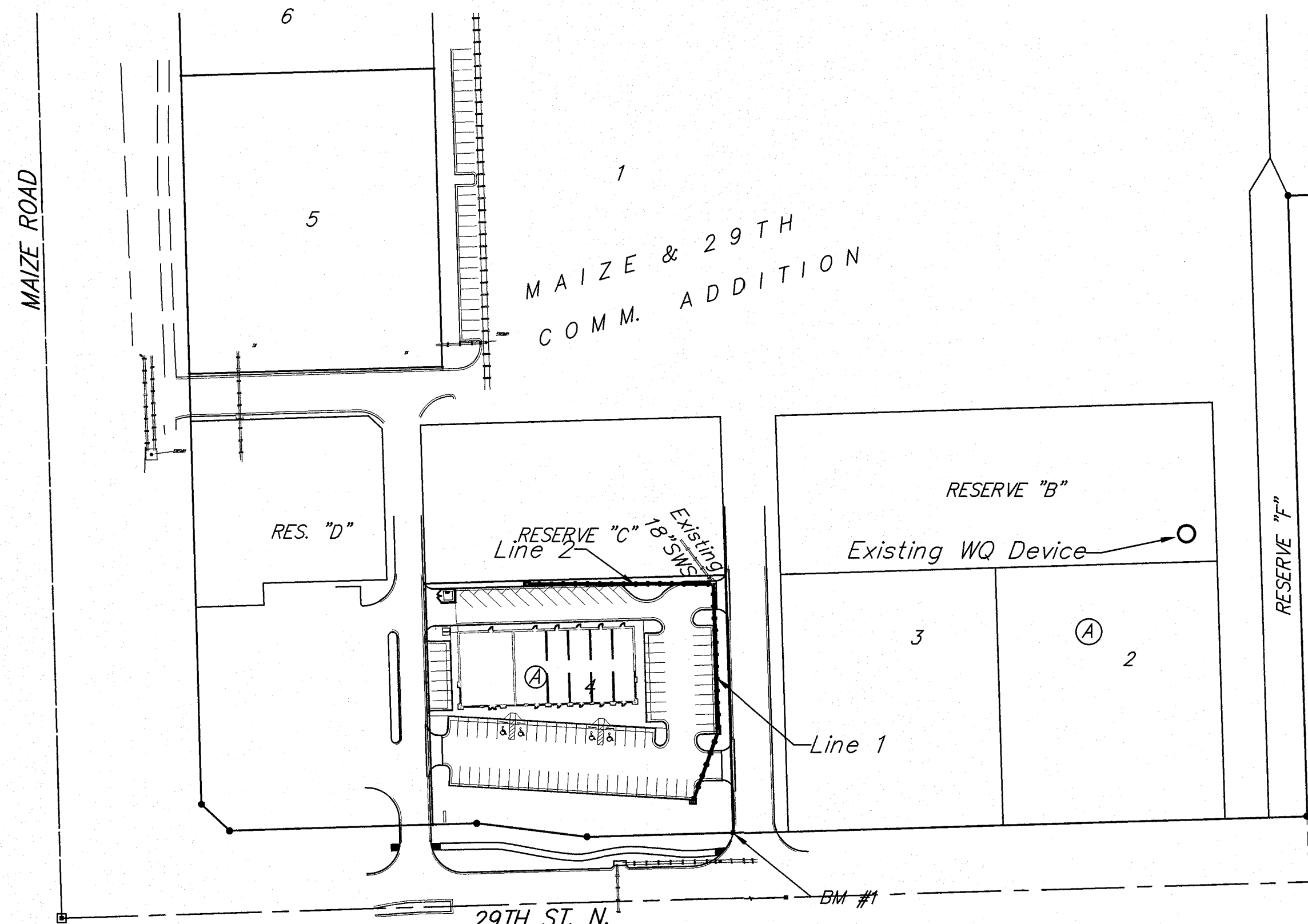
## Sheet Index

|                                   |      |
|-----------------------------------|------|
| Title Sheet                       | 1    |
| Type 1 Inlet L=5' and 10' Detail  | 2    |
| Type 1A Inlet L=5' and 10' Detail | 3    |
| Pavement Underdrain Detail        | 4    |
| Lines 1 & 2                       | 5    |
| Erosion Control & Grading Plan    | 6    |
| Erosion Control Details*          | 7-11 |
| Copy of Plat                      | 12   |

\*Erosion Control Details available at City of Wichita web site at  
<http://www.wichita.gov/Government/Departments/PWU/Pages/Regulations.aspx>



**AS-BUILT PLANS**  
**CONTRACTOR: PEARSON CONSTRUCTION, LLC**  
**SUPERINTENDENT: JUSTIN CULVER (ICON STRUCTURES, INC)**  
**CLIENT: CITY OF WICHITA**  
**INSPECTOR: JACOB MORRIS, SCHWAB-EATON, P.A.**  
**PDF BY: JCM 11/23/15**



**Stormwater Certification:**  
 New Development or Redevelopment

These construction plans were prepared in accordance with the current Stormwater Management Regulations as set forth in the City of Wichita's Storm Water Management Ordinance 16.32 and the policies/guidelines presented in the Wichita/Sedgwick County Stormwater Manual.

Detention: Provided by an existing pond. See Maize & 29th Commercial Addition drainage plan.  
 Disturbed Area = 1.44 ac.  
 Water Quality Volume = 4,756 cu. ft.  
 Water Quality Treatment is handled with an existing hydrodynamic separator installed for the site with Storm Water Project #SW20130034 (PPD0149) in the SE corner of Reserve "B". The O&M manual can also be found in the above referenced project file.  
 Downstream Channel Protection: Existing pond

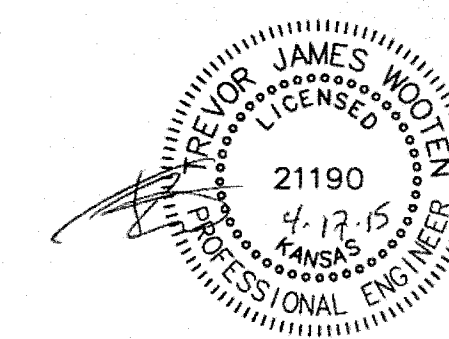
APPROVED AS NOTED  
 BY WICHITA PUBLIC WORKS ENGINEERING  
 AND STORMWATER DIVISION

Engineering *Rebecca Deul* 6/9/2015  
 Stormwater *JCM* 11/23/15

NOTE TO CONTRACTORS

Inspection and testing for this project is to be provided by a Licensed Consulting Engineering Firm under contract with the Owner/Developer. Said inspection to be in accordance with the City of Wichita standard construction engineering practices and certified by a Licensed Professional Engineer in the state of Kansas. No work shall be performed by the Contractor without such inspection nor shall any work be commenced without written authorization by City Engineering. All Construction and Materials shall comply with the current City of Wichita Specifications and Standards and Special Provisions (on file and available at Wichita.gov).

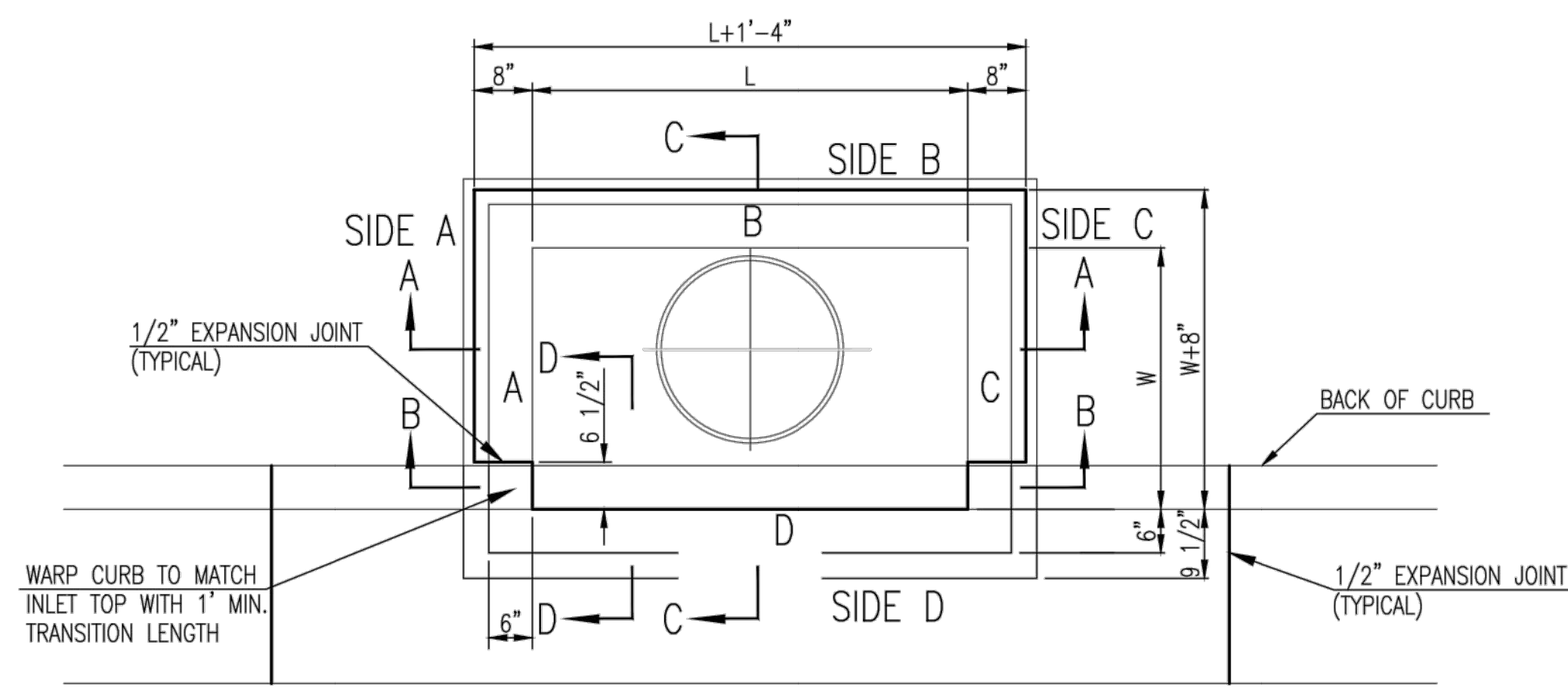
An approved copy of these plans signed by City staff are required on-site.



April 2015

Baughman Company, P.A. 315 Ellis St. Wichita, KS 67211 P 316-262-7271 F 316-262-0149  
 ENGINEERING | SURVEYING | PLANNING | LANDSCAPE ARCHITECTURE

E:\Projects\Maize & 29th Commercial Addition\_1207.P893\Engineering\Phase 1\SWD\_Project Number\PPD.dwg



TOP VIEW

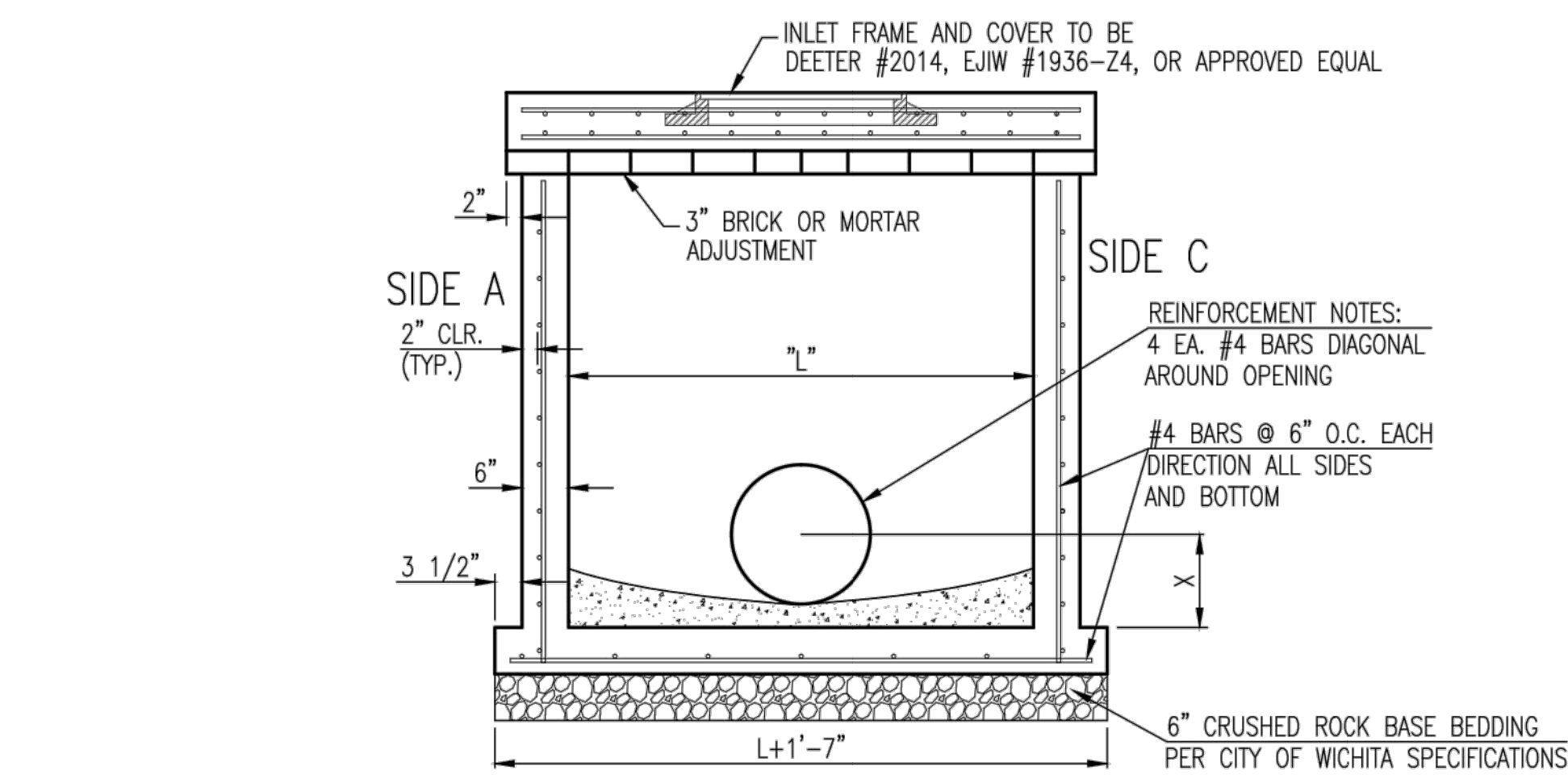
| BAR SCHEDULE  |         |         |
|---------------|---------|---------|
| INLET OPENING | B1 BARS | SPACING |
| 5'-0"         | #4      | 4"      |
| 10'-0"        | #6      | 3.5"    |

| PRECAST CURB INLET WIDTHS |                   |         |               |
|---------------------------|-------------------|---------|---------------|
| W                         | PRE-CAST TOP SIZE |         | PIPE DIA.**   |
|                           | WIDTH             | LENGTH  |               |
| 3'-0"                     | W+8"              | L+1'-4" | 21" & SMALLER |
| 4'-0"                     | W+8"              | L+1'-4" | 24" & 30"     |
| 5'-0"                     | W+8"              | L+1'-4" | 36" & 42"     |
| 6'-0"                     | W+8"              | L+1'-4" | 48" & 54"     |
| 7'-0"                     | W+8"              | L+1'-4" | 60" & 66"     |

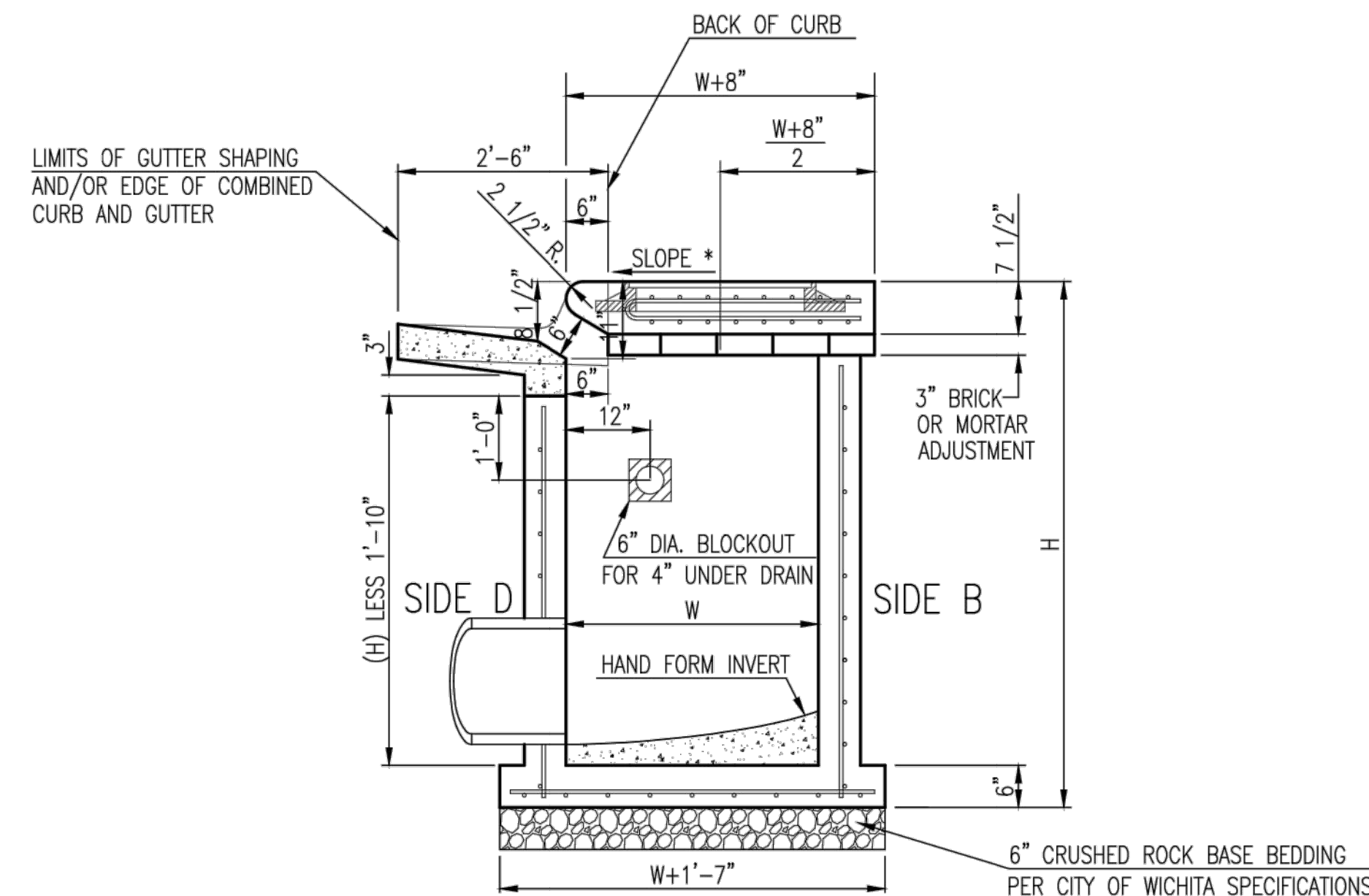
\*\* FOR PIPES PERPENDICULAR TO INLET WALL

GENERAL NOTES

1. CONCRETE TOPS TO BE INSTALLED ON THIN MORTAR CUSHION TO INSURE FULL SUPPORT ALONG BRICK. CONCRETE TOPS MAY BE CAST IN PLACE OR PRECAST. CONCRETE USED FOR INLET CONSTRUCTION SHALL CONFORM TO CITY OF WICHITA SPECIFICATIONS FOR CONCRETE PAVEMENT MIX.
2. CONTRACTOR SHALL HAVE THE OPTION OF CONSTRUCTING 8" BRICK MASONRY WALLS BETWEEN THE CONCRETE INLET BASE AND TOP OF THIS INLET WHEN W=5'-0" AND H=7'-0" OR LESS.
3. INLET INVERT SHALL BE SHAPED WITH 8 SACK SAND MIX CONCRETE TO CREATE FLOW CHANNELS AND TO INCREASE HYDRAULIC EFFICIENCY SUCH THAT THE INLET WILL BE SELF CLEANING BETWEEN ALL INLET AND/OR OUTLET PIPES.
4. THE ENDS OF ALL PIPES INSTALLED IN INLETS SHALL BE CUT OFF FLUSH WITH THE INSIDE FACE OF THE INLET WALL.
5. INLET FRAME AND COVER TO BE DEETER #2014, EJIW #1936 Z4, OR APPROVED EQUAL, SEE SW-303.
6. CONTRACTOR SHALL REMOVE LIFTING HOOKS AFTER INSTALLATION. RECESSES IN INLET WALL SHALL BE GROUTED FLUSH TO THE INLET WALL WITH HYDRAULIC CEMENT AFTER THE INLET IS IN PLACE. LIFTING HOLES THRU THE INLET WALL WILL NOT BE ACCEPTED.

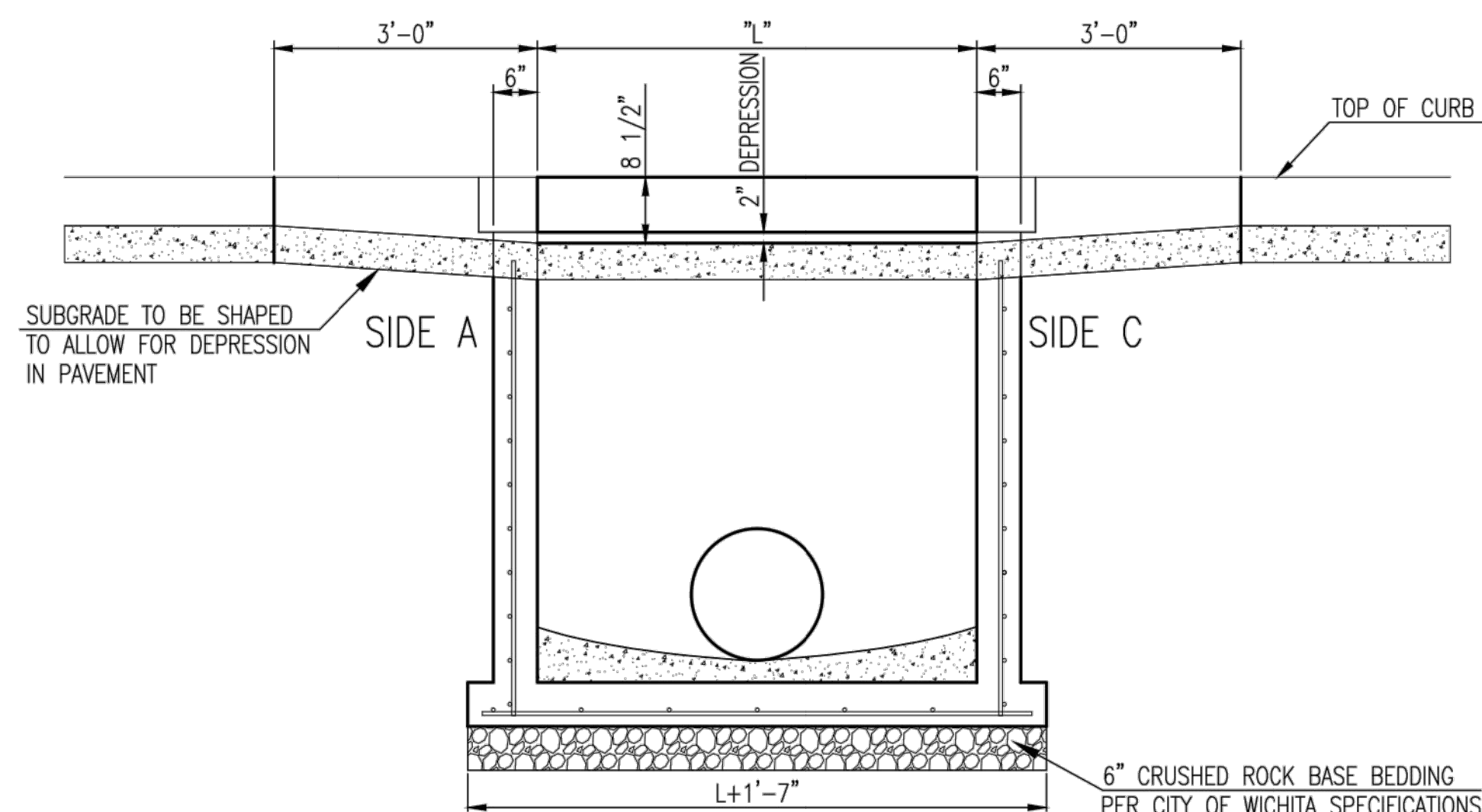
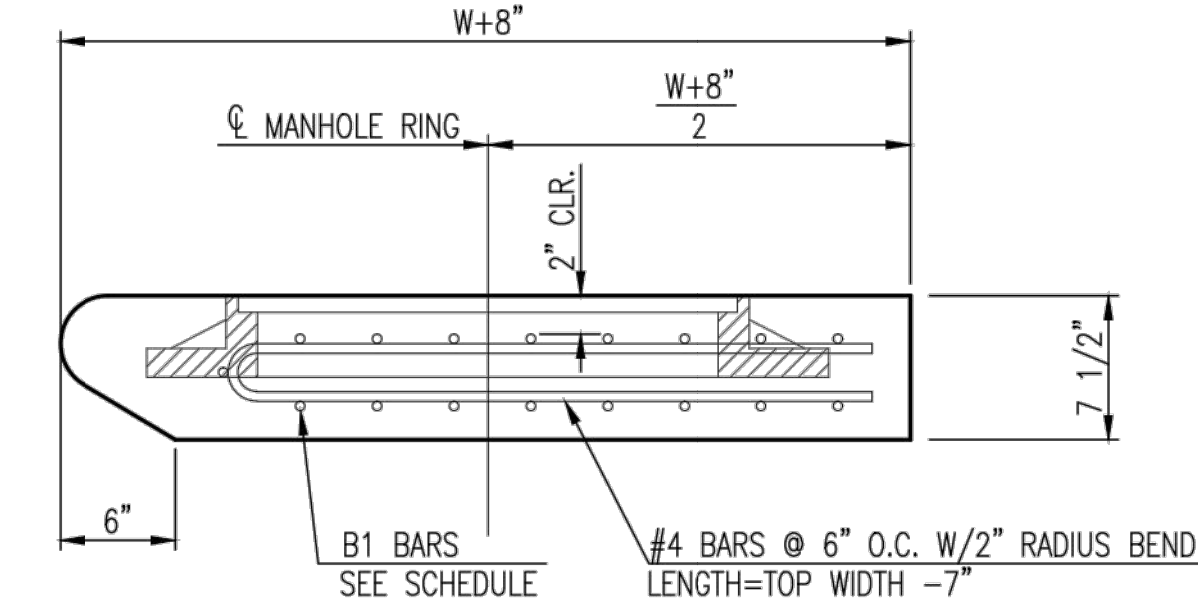


SECTION "A-A"

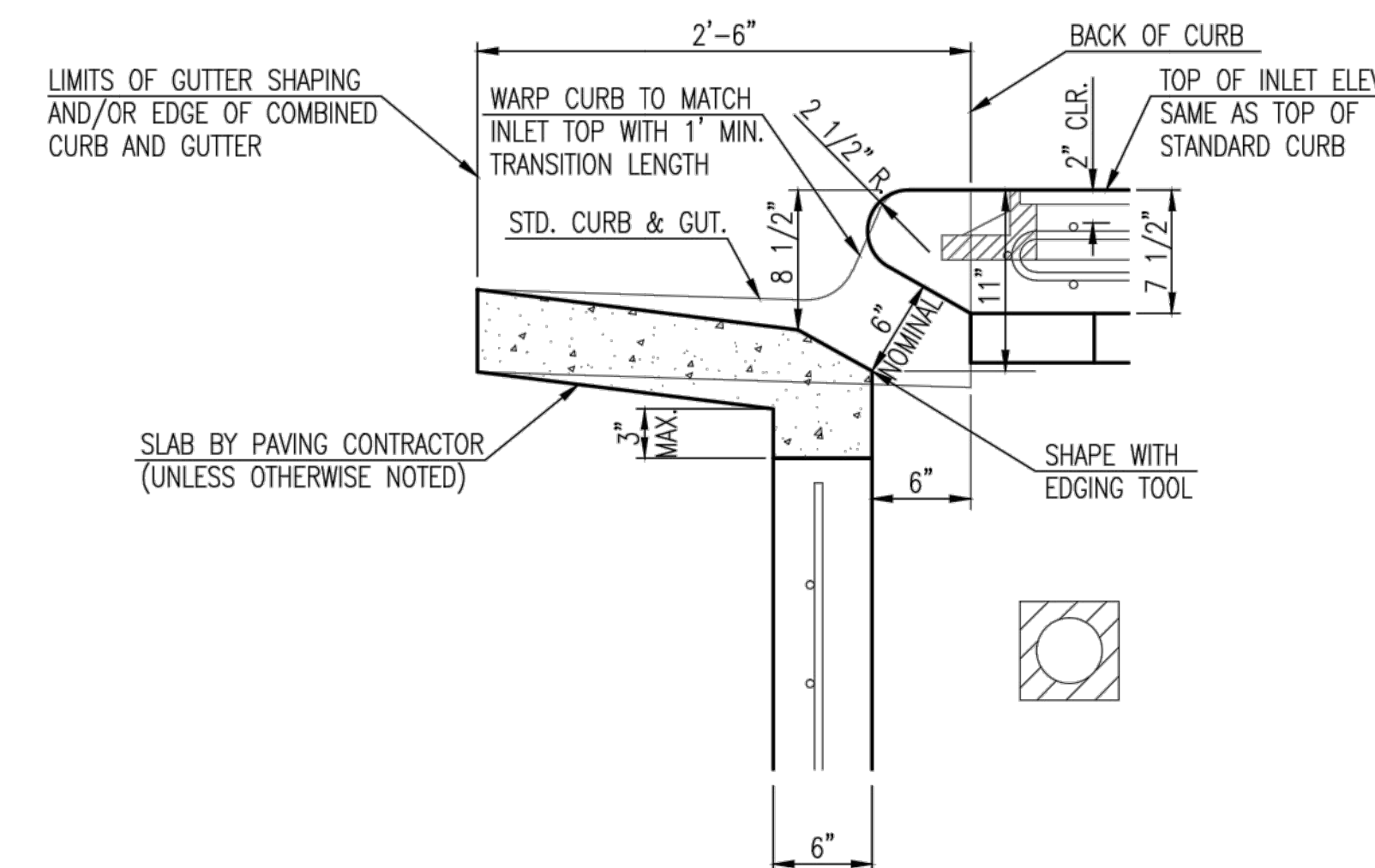


SECTION "C-C"


NOTES:  
\* SLOPE OF INLET TOP TO MATCH SIDEWALK OR PARKING SLOPES WITHIN LIMITS INDICATED.



SECTION "B-B"



SECTION "D-D"



**CITY OF WICHITA**  
PUBLIC WORKS & UTILITIES  
ENGINEERING DIVISION

**STANDARD TYPE 1  
CURB INLET  
5'-0" OR 10'-0" OPENING**

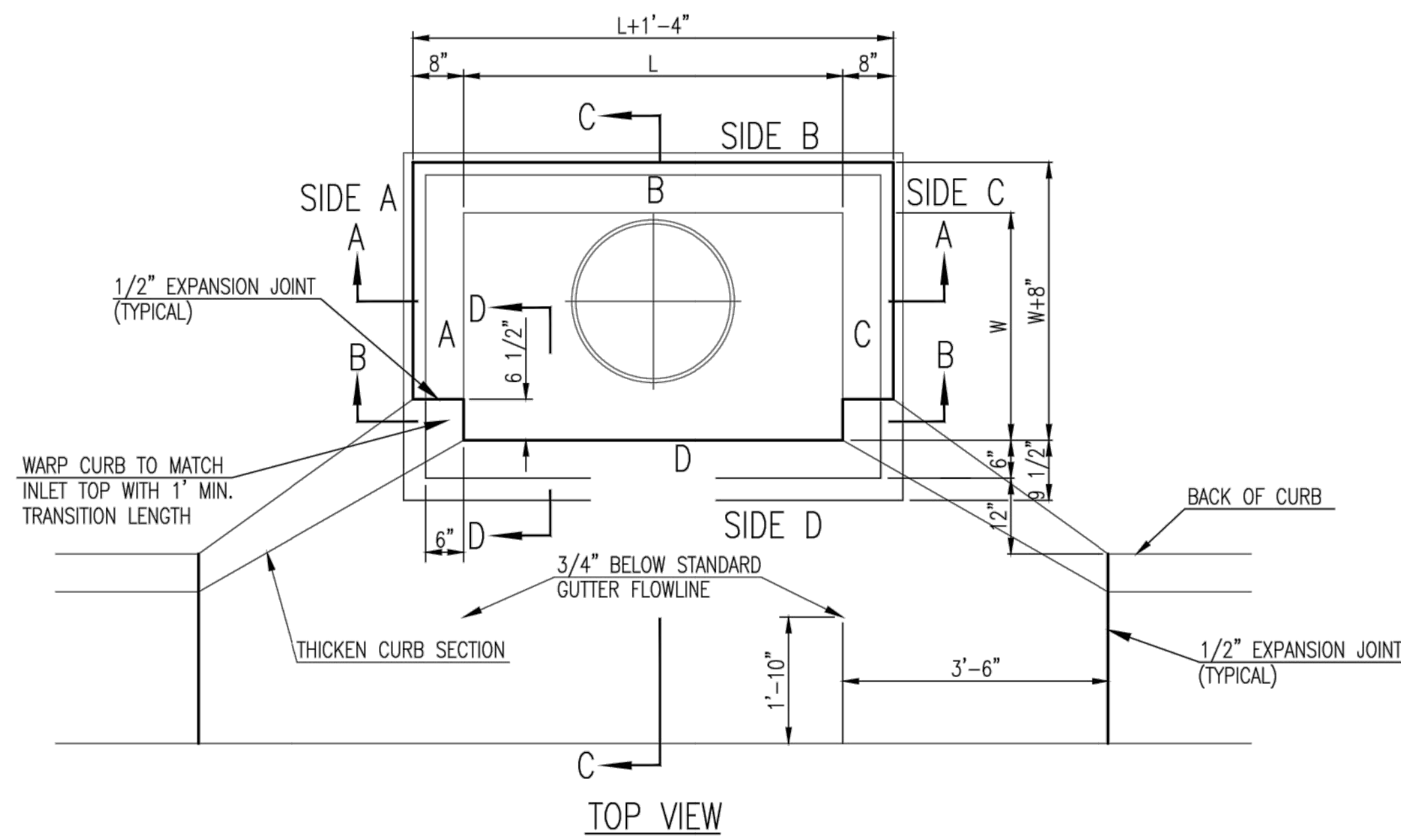
CITY ENGINEER  
**Gary Janzen, P.E.**

|                |            |       |
|----------------|------------|-------|
| PROJECT NUMBER | OCA NUMBER | DATE  |
| 0309 PPD       | (607861)   | 07/15 |

CITY ENGINEER'S OFFICE  
CITY HALL - SEVENTH FLOOR  
455 NORTH MAIN STREET  
WICHITA, KANSAS 67202-1620  
(316) 268-4501

|        |       |
|--------|-------|
| DESIGN | DRAWN |
| Staff  | Staff |

SHEET  
**2 of 12**



TOP VIEW

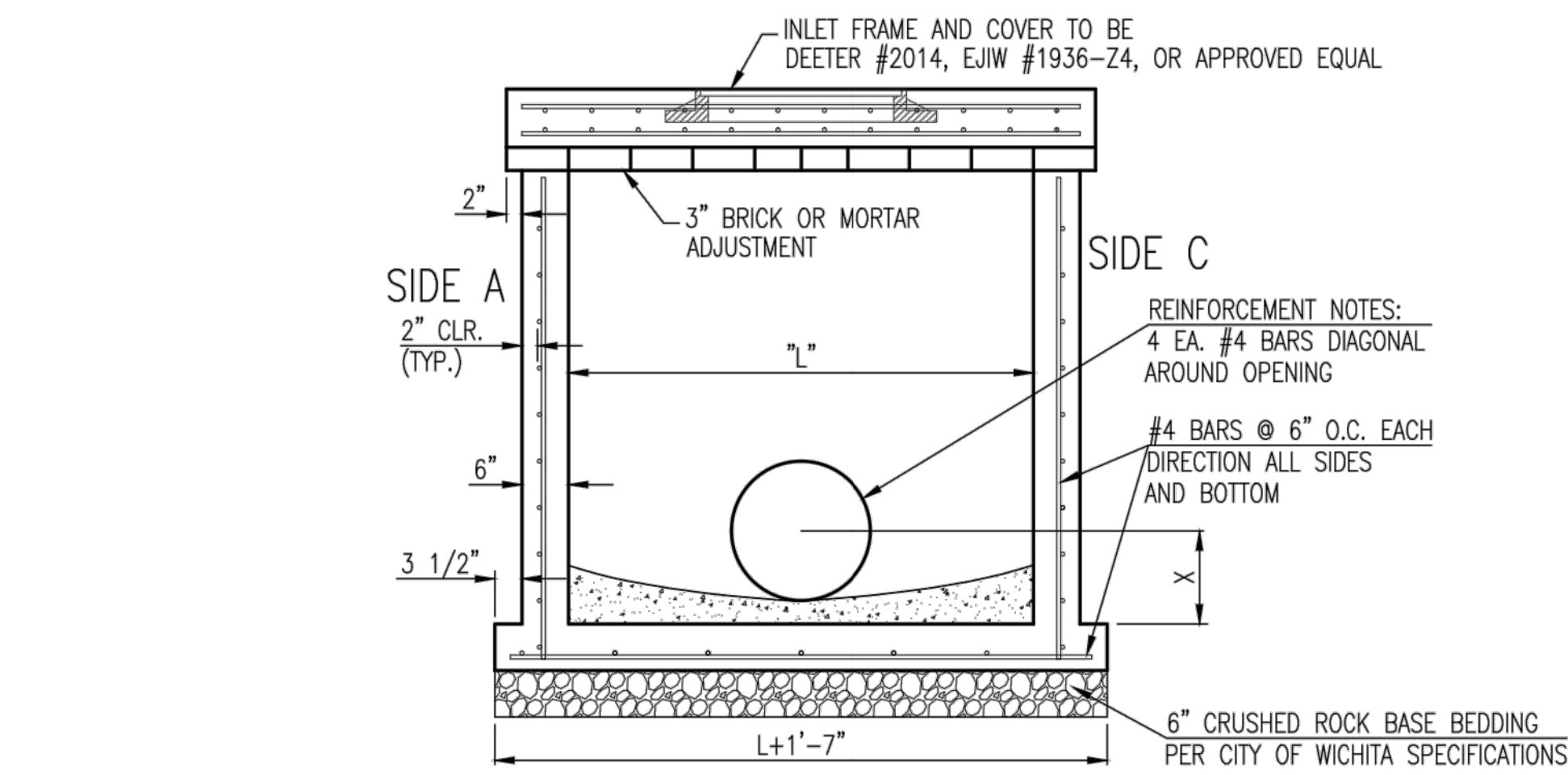
| BAR SCHEDULE  |         |         |
|---------------|---------|---------|
| INLET OPENING | B1 BARS | SPACING |
| 5'-0"         | #4      | 4"      |
| 10'-0"        | #6      | 3.5"    |

| PRECAST CURB INLET WIDTHS |                   |         |               |
|---------------------------|-------------------|---------|---------------|
| W                         | PRE-CAST TOP SIZE |         | PIPE DIA.**   |
|                           | WIDTH             | LENGTH  |               |
| 3'-0"                     | W+8"              | L+1'-4" | 21" & SMALLER |
| 4'-0"                     | W+8"              | L+1'-4" | 24" & 30"     |
| 5'-0"                     | W+8"              | L+1'-4" | 36" & 42"     |
| 6'-0"                     | W+8"              | L+1'-4" | 48" & 54"     |
| 7'-0"                     | W+8"              | L+1'-4" | 60" & 66"     |

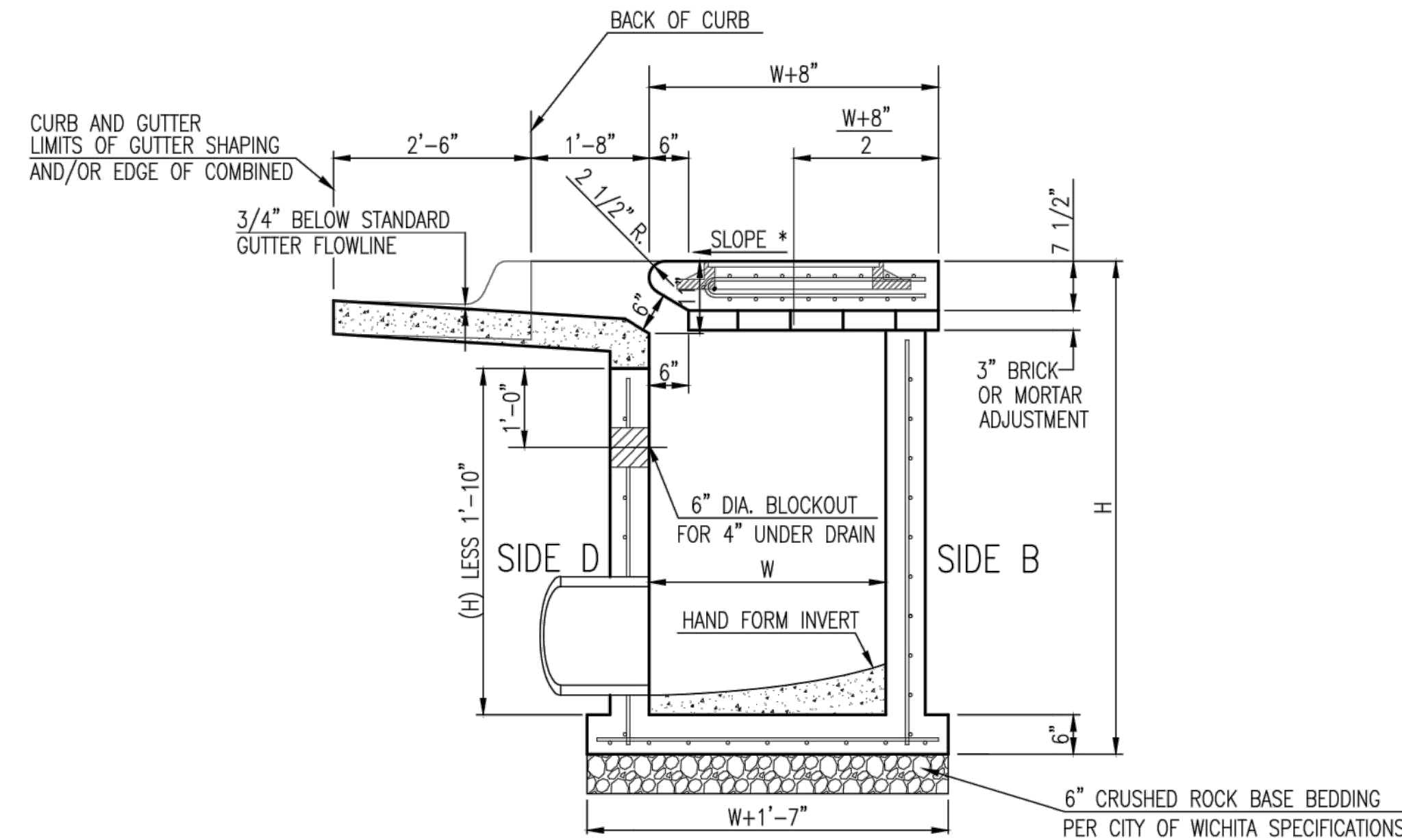
\*\* FOR PIPES PERPENDICULAR TO INLET WALL

GENERAL NOTES

1. CONCRETE TOPS TO BE INSTALLED ON THIN MORTAR CUSHION TO INSURE FULL SUPPORT ALONG BRICK. CONCRETE TOPS MAY BE CAST IN PLACE OR PRECAST. CONCRETE USED FOR INLET CONSTRUCTION SHALL CONFORM TO CITY OF WICHITA SPECIFICATIONS FOR CONCRETE PAVEMENT MIX.
2. CONTRACTOR SHALL HAVE THE OPTION OF CONSTRUCTING 8" BRICK MASONRY WALLS BETWEEN THE CONCRETE INLET BASE AND TOP OF THIS INLET WHEN W=5'-0" AND H=7'-0" OR LESS.
3. INLET INVERT SHALL BE SHAPED WITH 8 SACK SAND MIX CONCRETE TO CREATE FLOW CHANNELS AND TO INCREASE HYDRAULIC EFFICIENCY SUCH THAT THE INLET WILL BE SELF CLEANING BETWEEN ALL INLET AND/OR OUTLET PIPES.
4. THE ENDS OF ALL PIPES INSTALLED IN INLETS SHALL BE CUT OFF FLUSH WITH THE INSIDE FACE OF THE INLET WALL.
5. INLET FRAME AND COVER TO BE DEETER #2014, EJIW #1936-24, OR APPROVED EQUAL, SEE SW-303.
6. CONTRACTOR SHALL REMOVE LIFTING HOOKS AFTER INSTALLATION. RECESSES IN INLET WALL SHALL BE GROUTED FLUSH TO THE INLET WALL WITH HYDRAULIC CEMENT AFTER THE INLET IS IN PLACE. LIFTING HOLES THRU THE INLET WALL WILL NOT BE ACCEPTED.

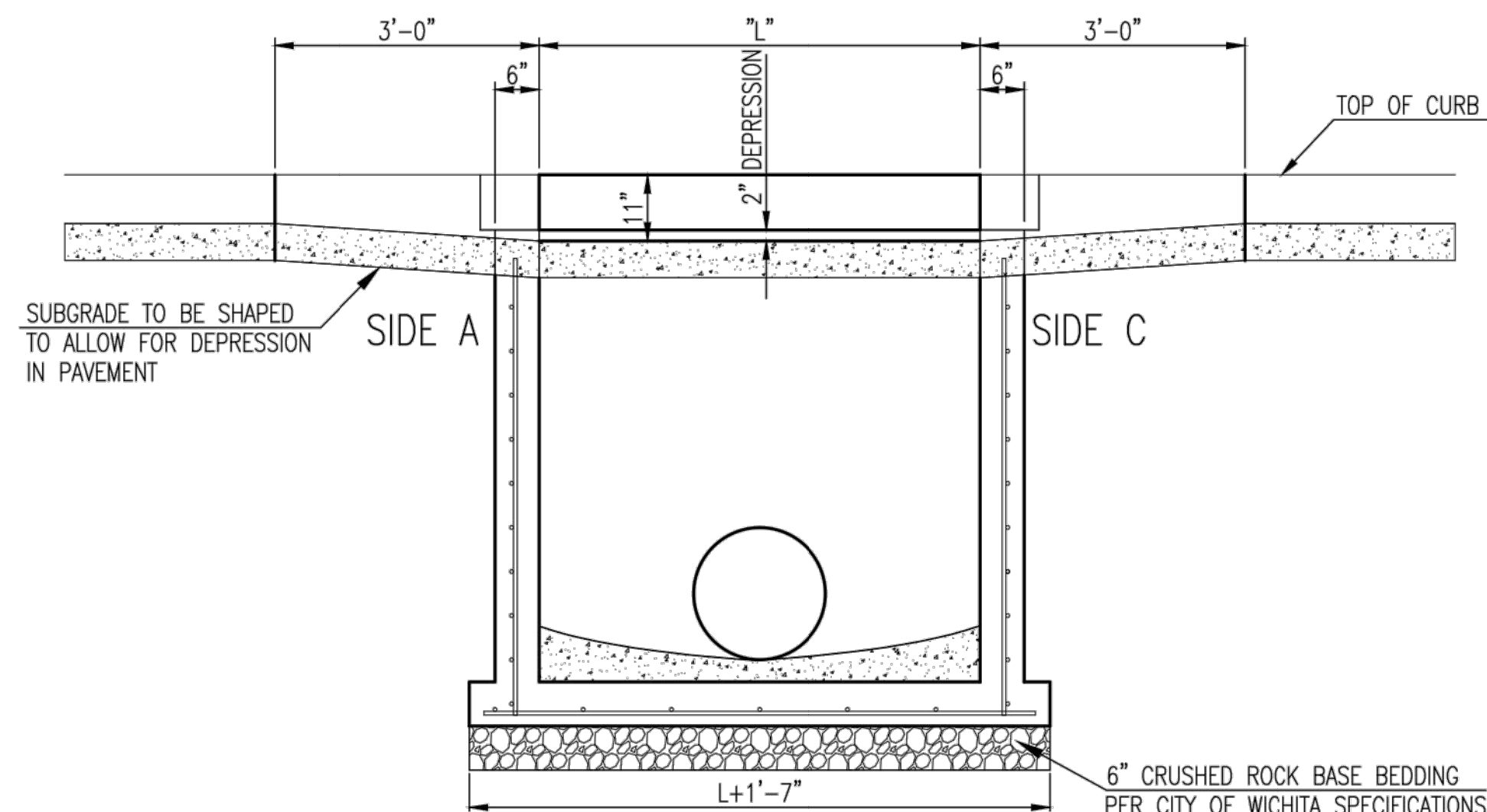
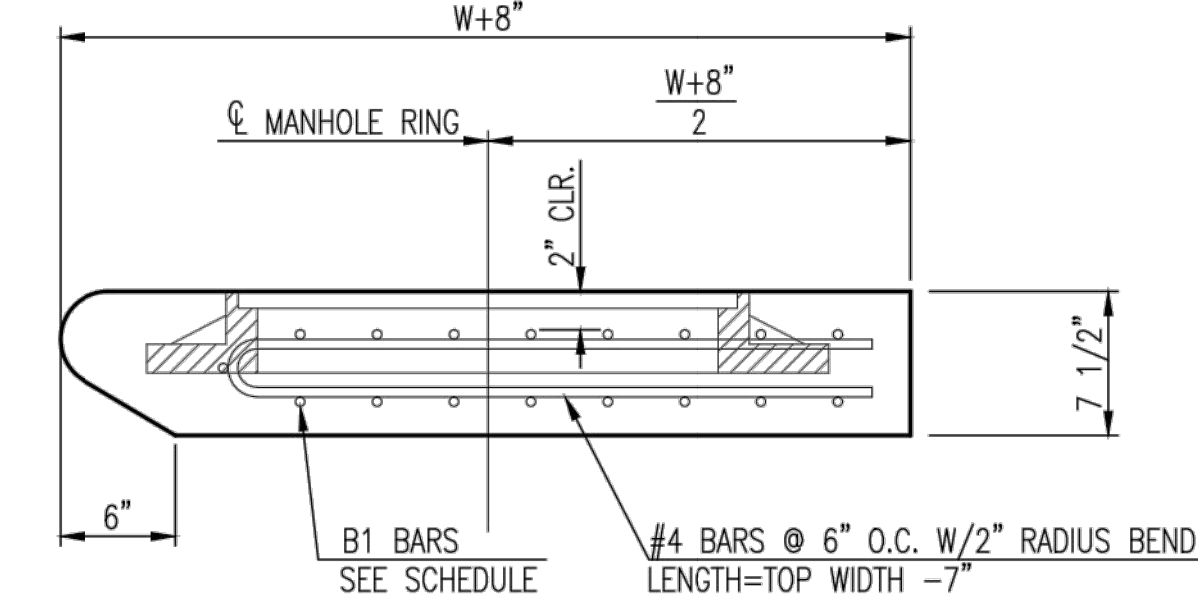


SECTION "A-A"

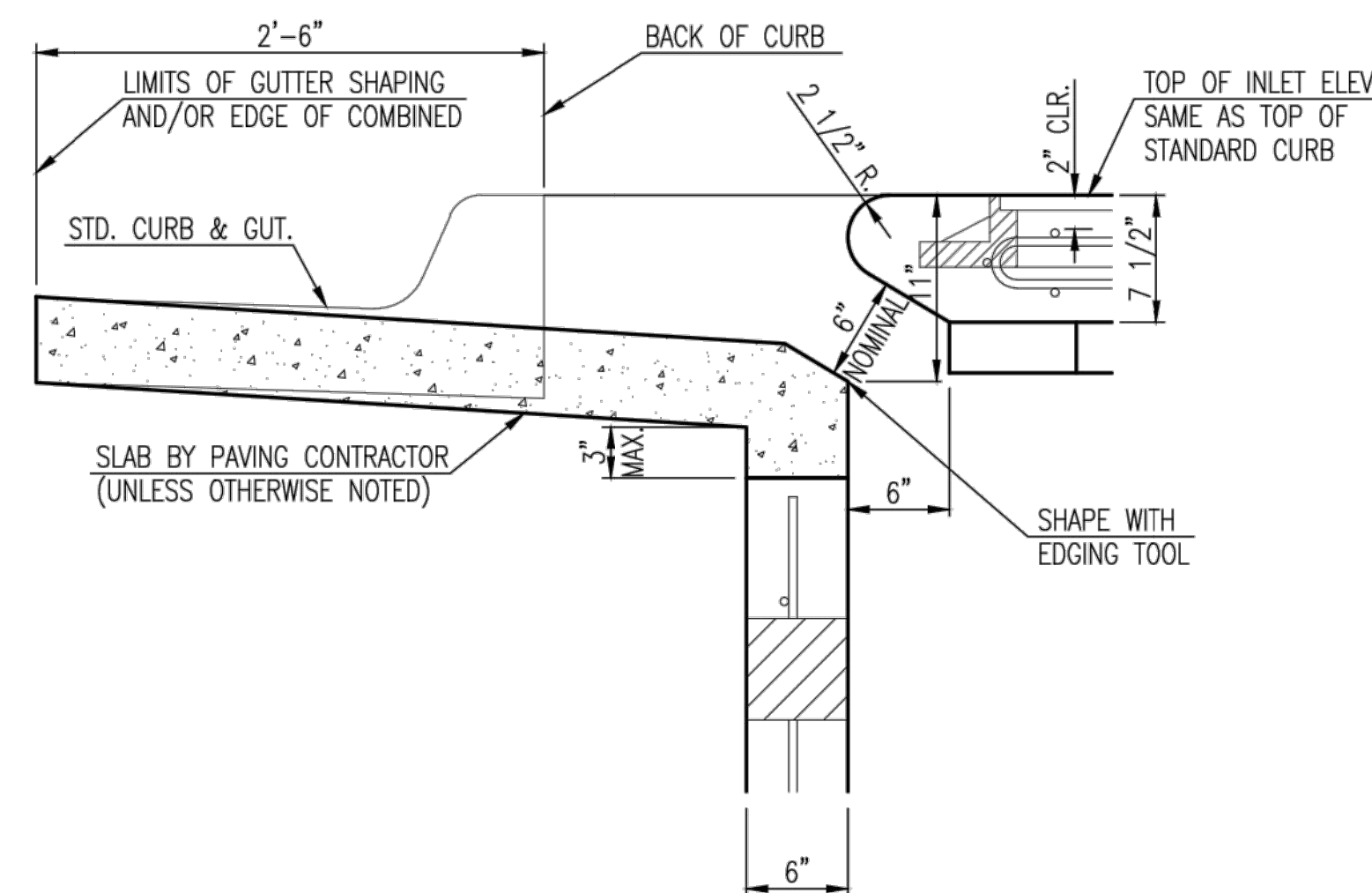


SECTION "C-C"

NOTES:  
\* SLOPE OF INLET TOP TO MATCH SIDEWALK OR PARKING SLOPES WITHIN LIMITS INDICATED.



SECTION "B-B"



SECTION "D-D"



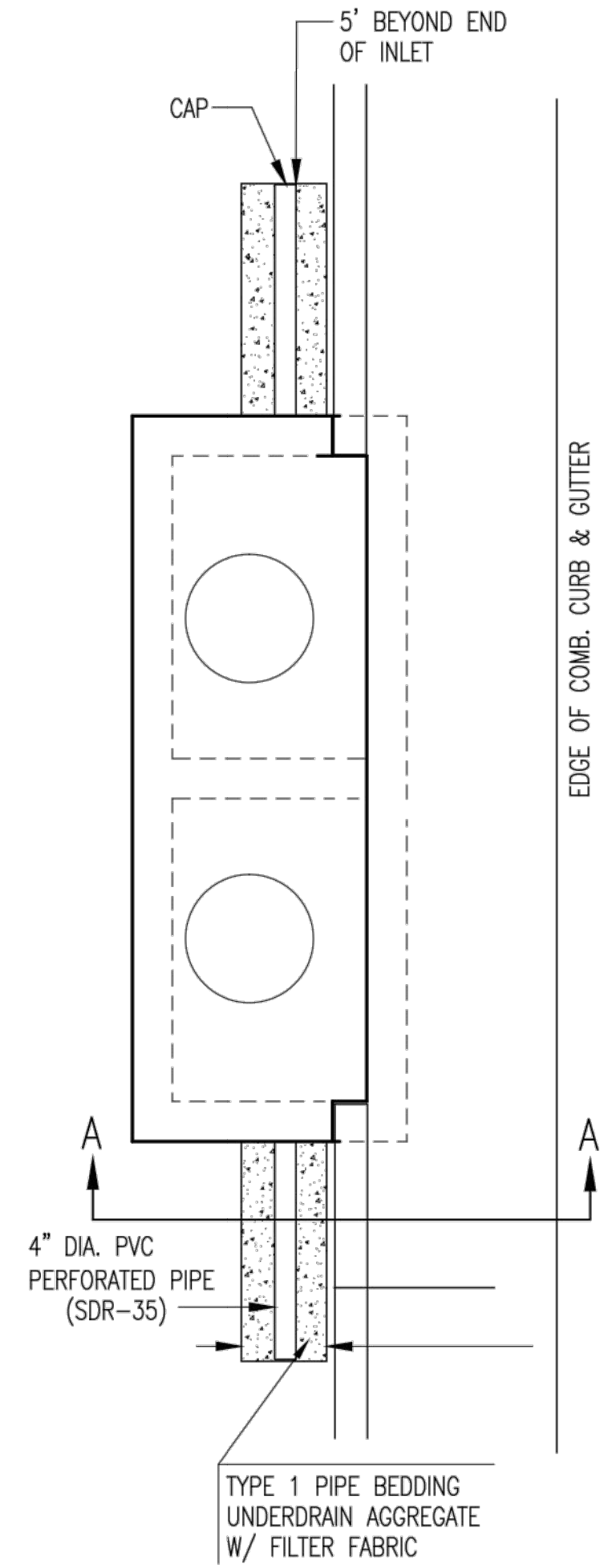
STANDARD TYPE 1A  
CURB INLET  
5'-0" OR 10'-0" OPENING

CITY ENGINEER  
**Gary Janzen, P.E.**

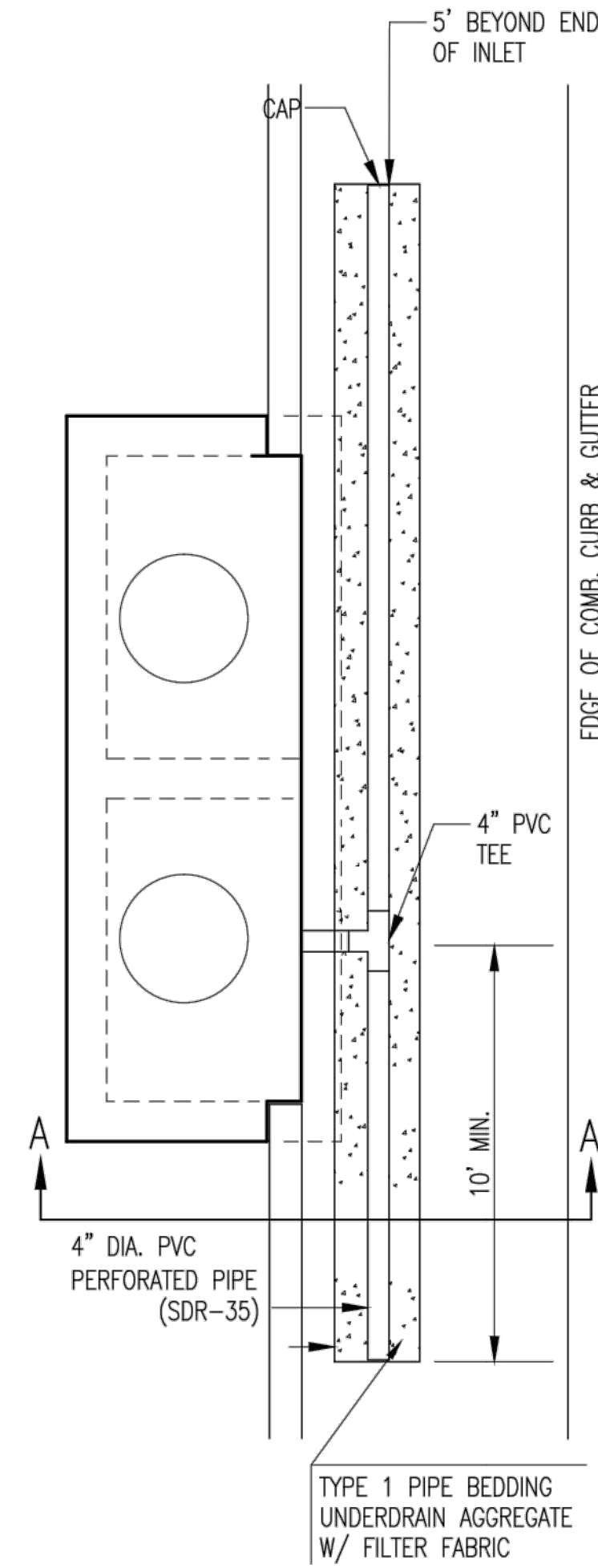
|                            |                        |               |
|----------------------------|------------------------|---------------|
| PROJECT NUMBER<br>0309 PPD | OCA NUMBER<br>(607861) | DATE<br>07/15 |
|----------------------------|------------------------|---------------|

|  |                  |                |
|--|------------------|----------------|
| CITY ENGINEER'S OFFICE<br>CITY HALL - SEVENTH FLOOR<br>455 NORTH MAIN STREET<br>WICHITA, KANSAS 67202-1620<br>(316) 268-4501 | DESIGN<br>Staff  | DRAWN<br>Staff |
|  | SHEET<br>3 of 12 |                |

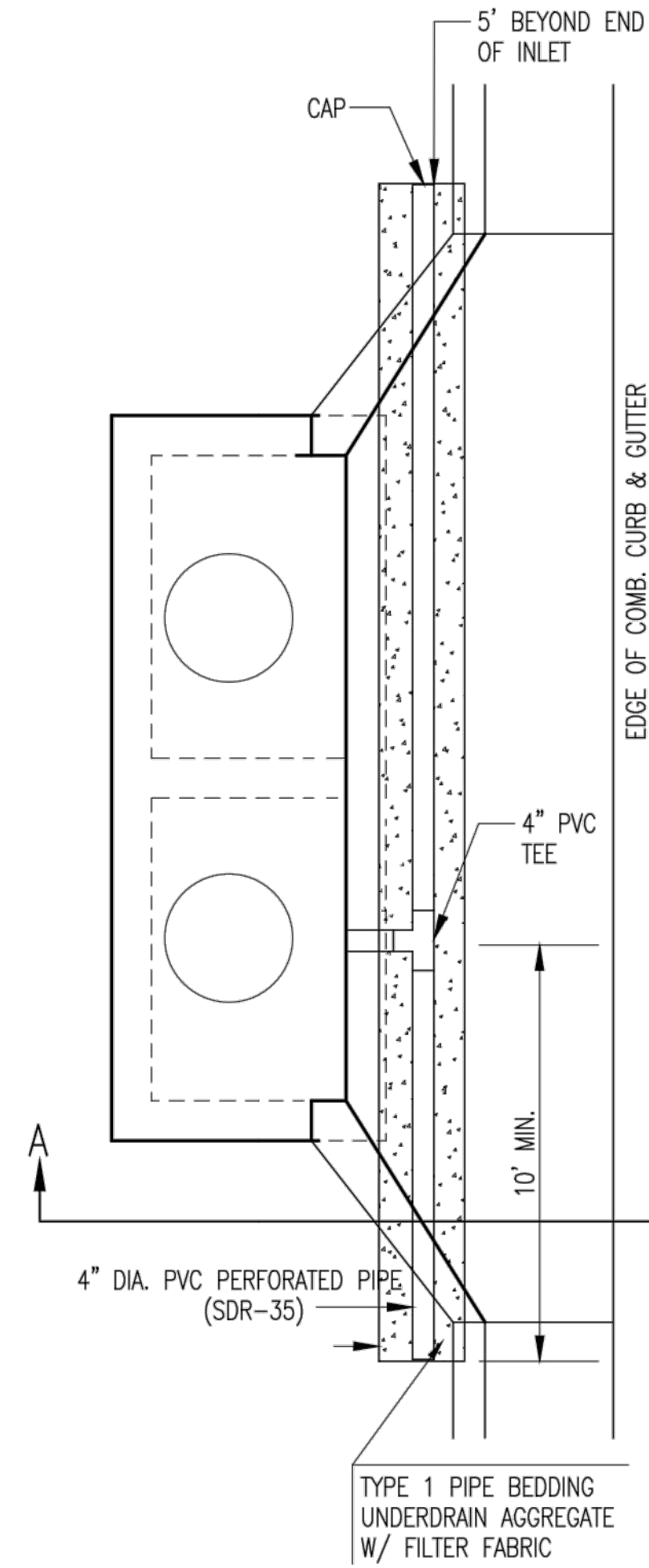
PAVEMENT UNDERDRAIN SHALL BE INSTALLED ON ALL CURB INLETS.



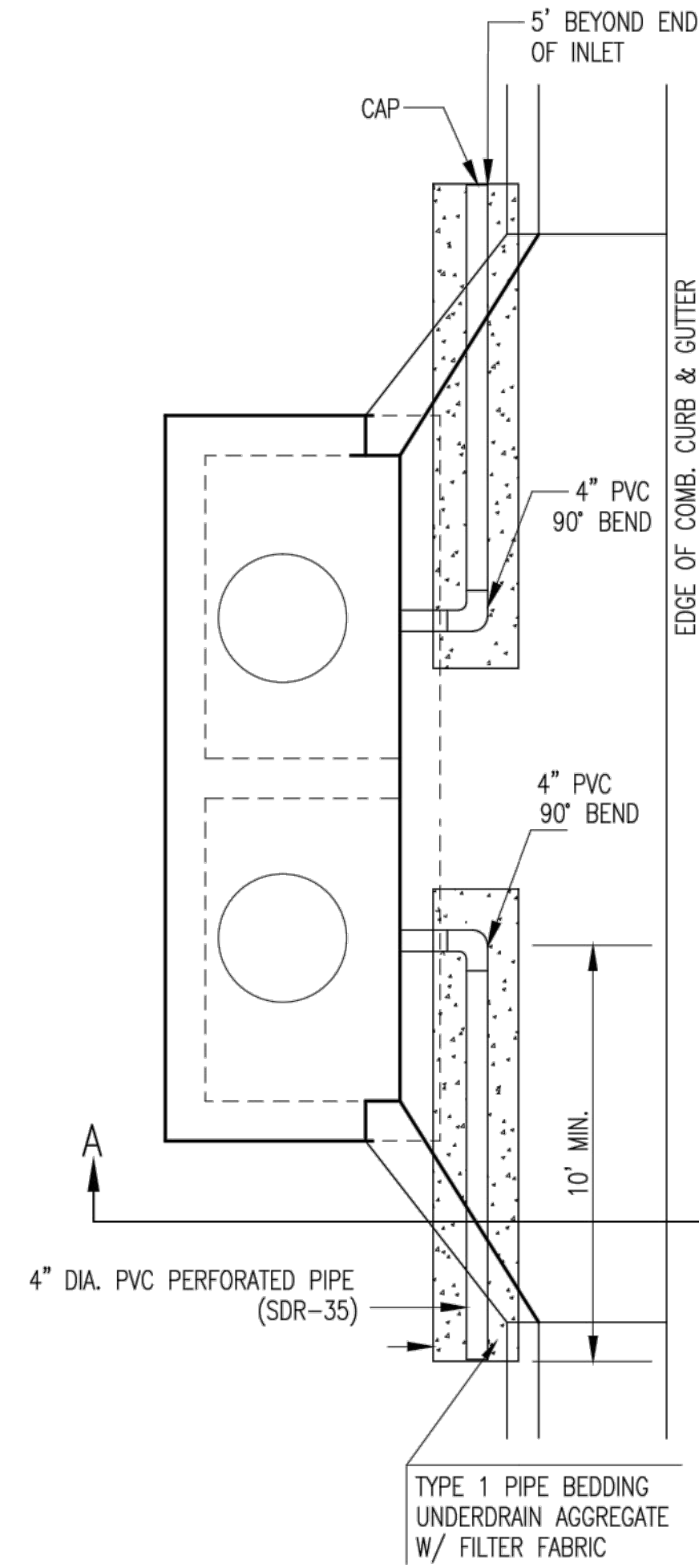
TYPE 1  
OPTION 1



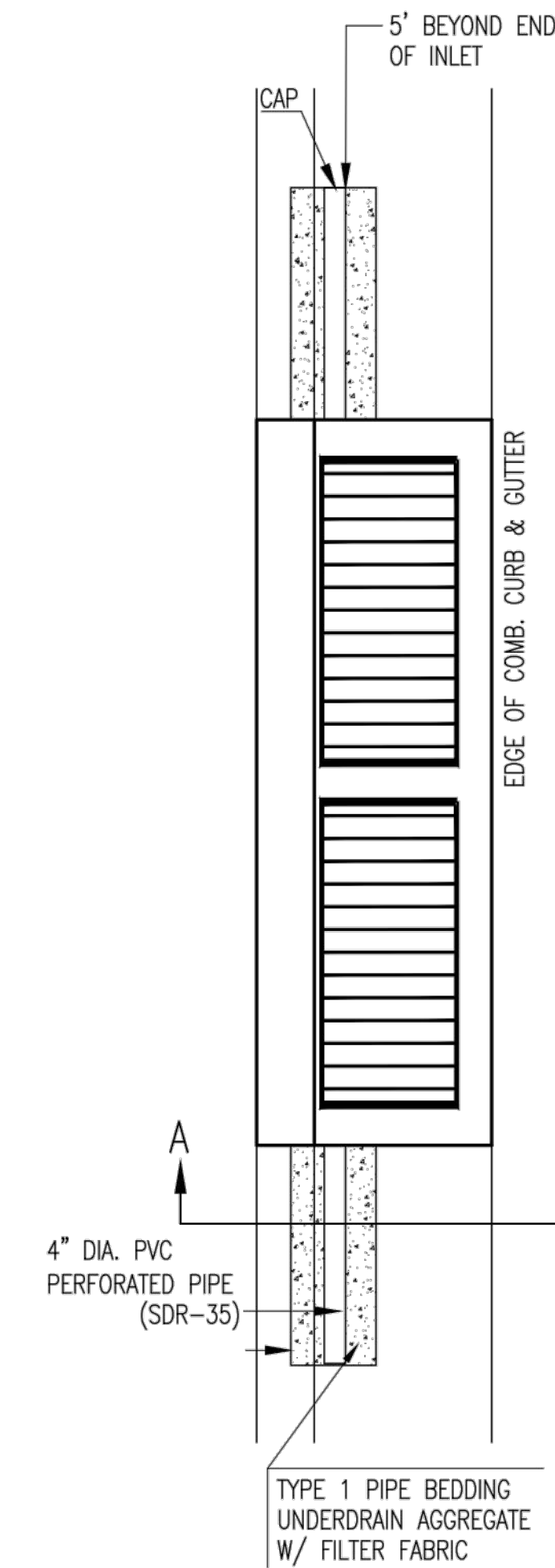
TYPE 1  
OPTION 2



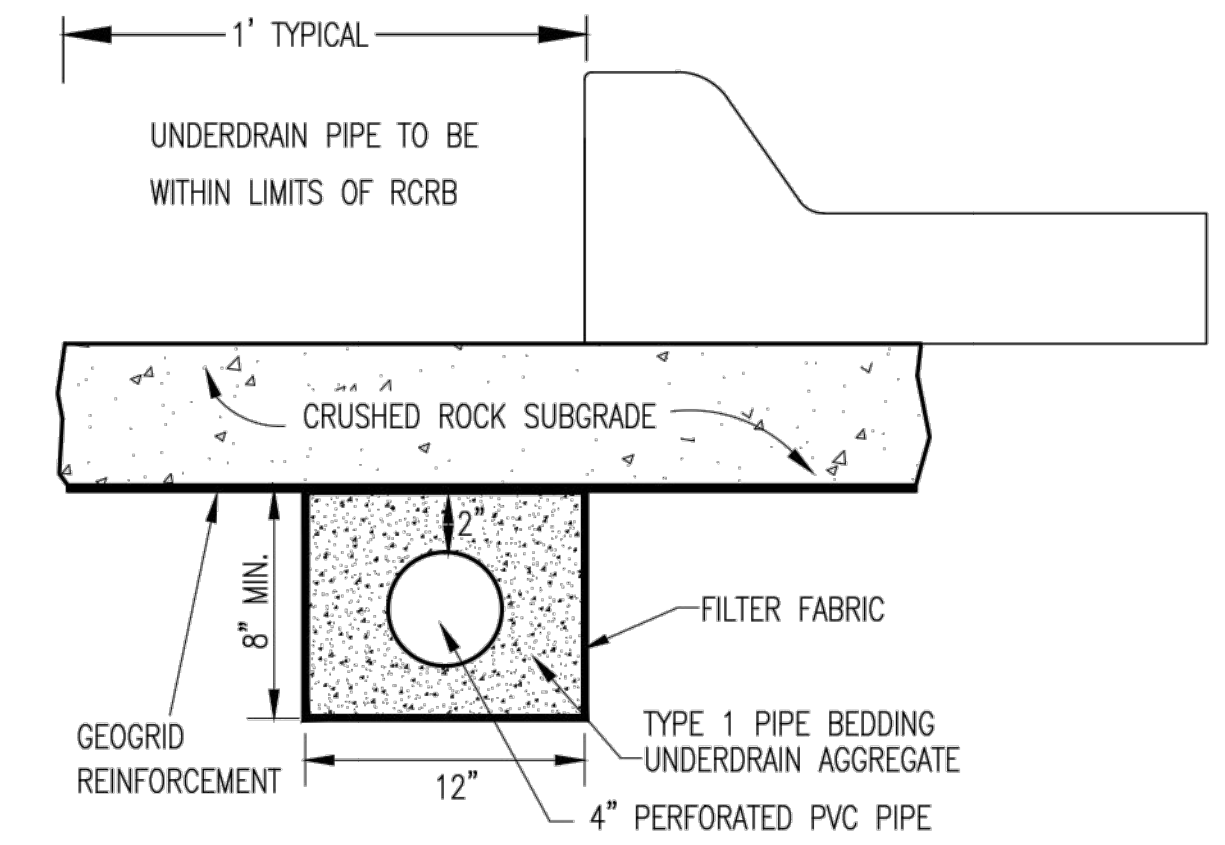
TYPE 1-A INLET  
OPTION 1



TYPE 1-A INLET  
OPTION 2



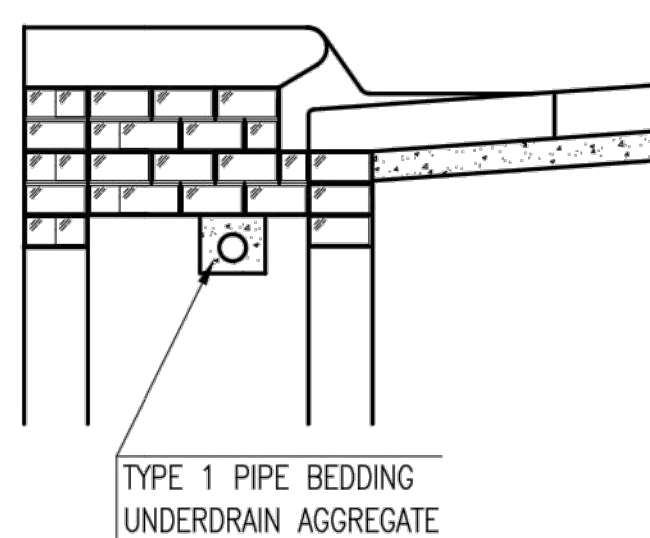
TYPE 2



SECTION A-A (TYPICAL)

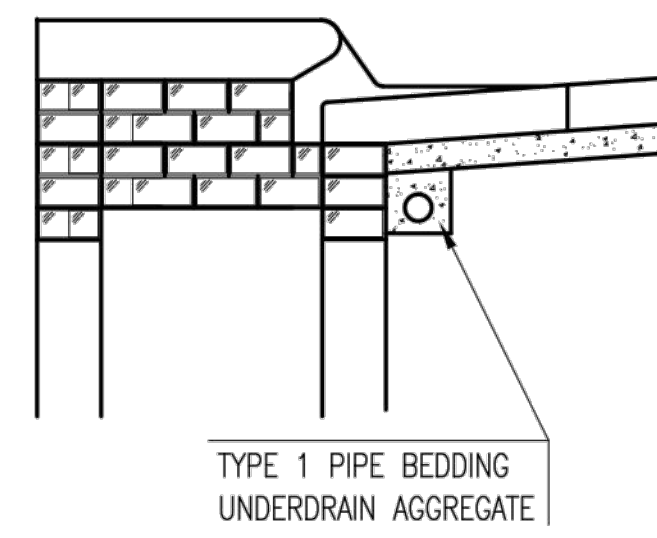
GENERAL NOTES

- PAVEMENT CONTRACTOR WILL BE REQUIRED TO INSTALL SDR 35, 4" PERFORATED DRAIN PIPE AND TEE AS INDICATED IN THE DETAILS.
- WHEN SWS CONSTRUCTED BY SEPARATE PROJECT, SWS CONTRACTOR SHALL INSTALL SDR 35, 4" DRAIN PIPE STUB ONLY THROUGH WALLS OF CURB INLETS AND CAP TO ALLOW FUTURE CONNECTION OF TEE AND ADDITIONAL DRAIN PIPE BY OTHERS.
- UNDERDRAIN PIPE SHALL BE PAID AS A MEASURED QUANTITY BY THE LINEAL FOOT.

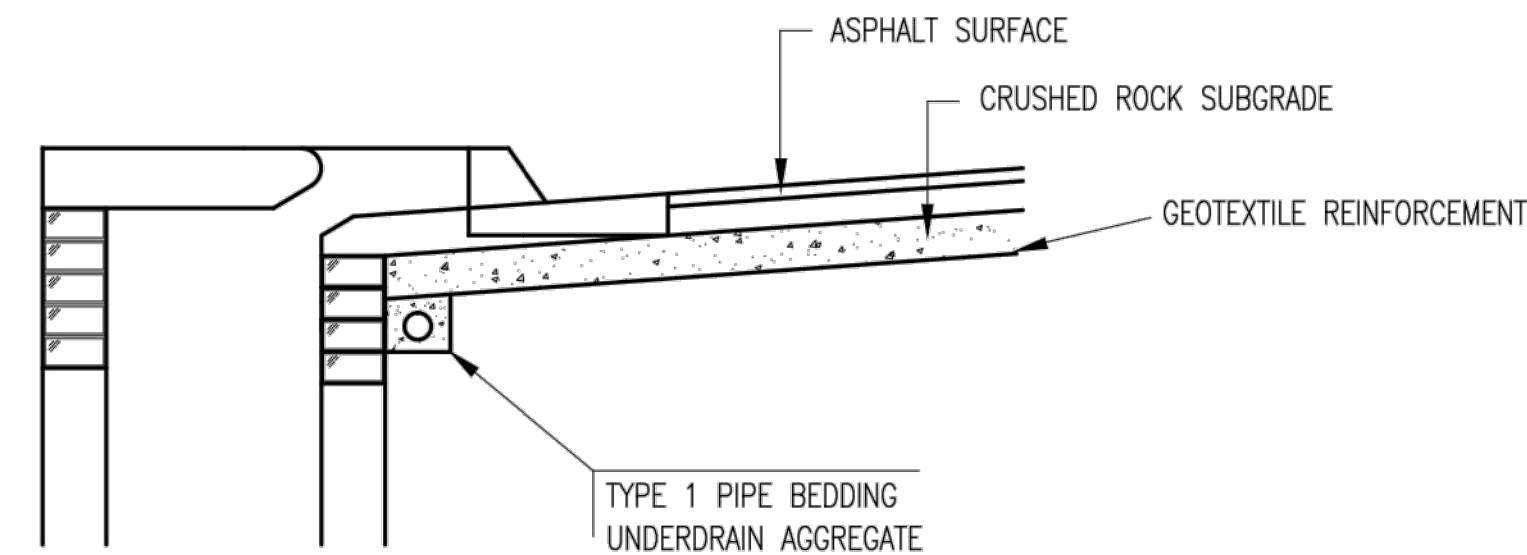


(MIN. 16 PERFORATIONS PER LIN. FT. @ 1/4" DIA.)  
PERFORATIONS TO BE ON BOTTOM HALF

SECTION A-A



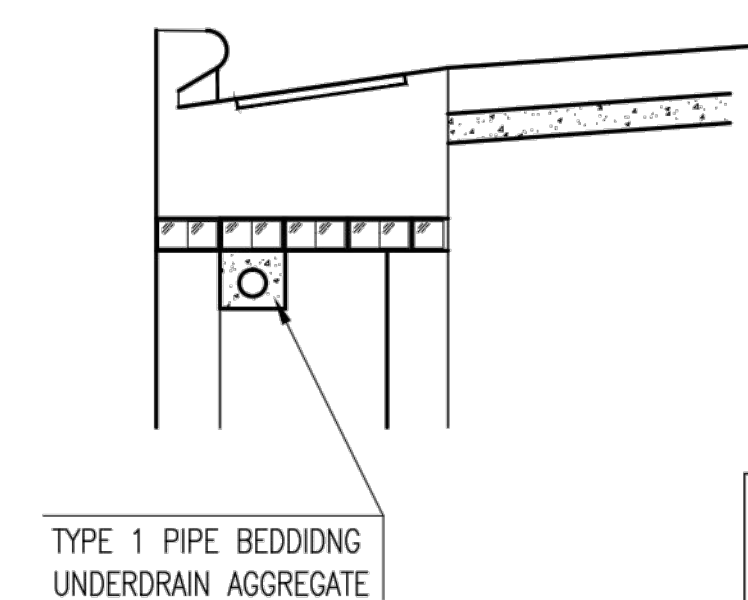
TYPE 1 PIPE BEDDING  
UNDERDRAIN AGGREGATE



SECTION A-A

PAVEMENT UNDERDRAIN DETAIL

BID ITEM TO BE PROVIDED PER 4" PERFORATED UNDERDRAIN PIPE.



TYPE 1 PIPE BEDDING  
UNDERDRAIN AGGREGATE

SECTION A-A



CURB INLET  
PAVEMENT UNDERDRAIN  
DETAIL

CITY ENGINEER

GARY JANZEN, P.E.

|                |            |       |
|----------------|------------|-------|
| PROJECT NUMBER | OCA NUMBER | DATE  |
| 0309 PPD       | (607861)   | 07/15 |

CITY ENGINEER'S OFFICE  
CITY HALL - SEVENTH FLOOR  
455 NORTH MAIN STREET  
WICHITA, KANSAS 67202-1620  
(316) 268-4501

SHEET

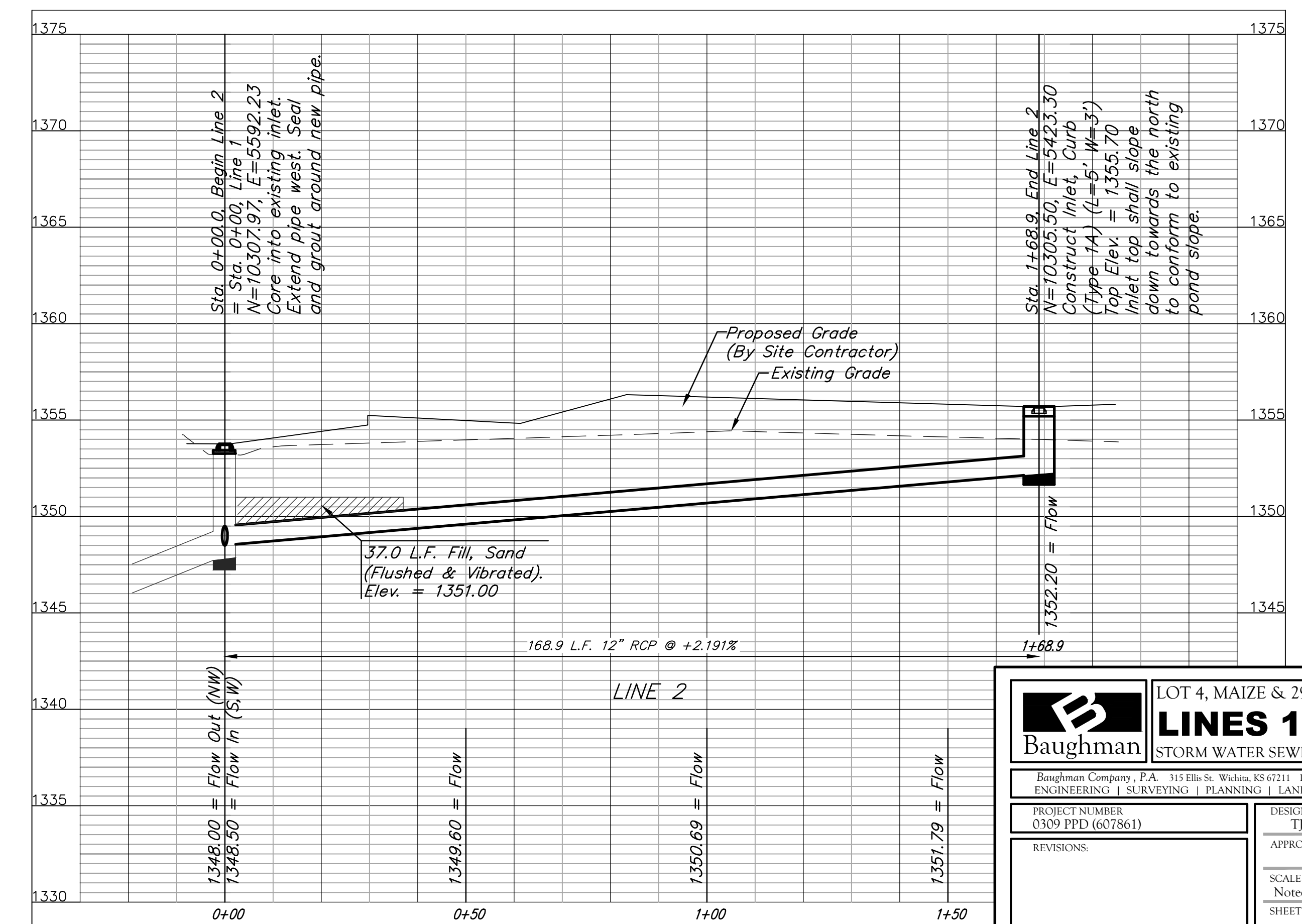
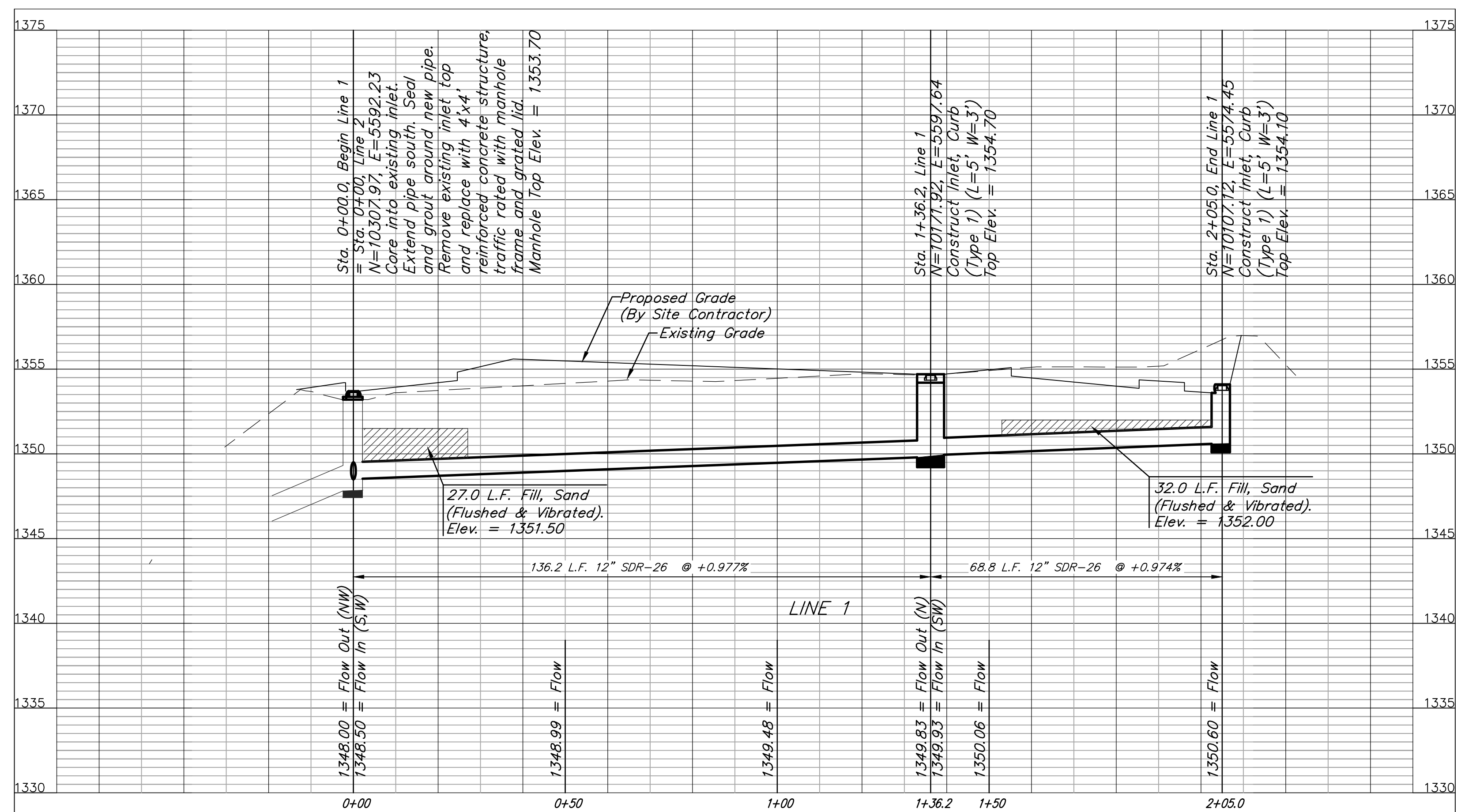
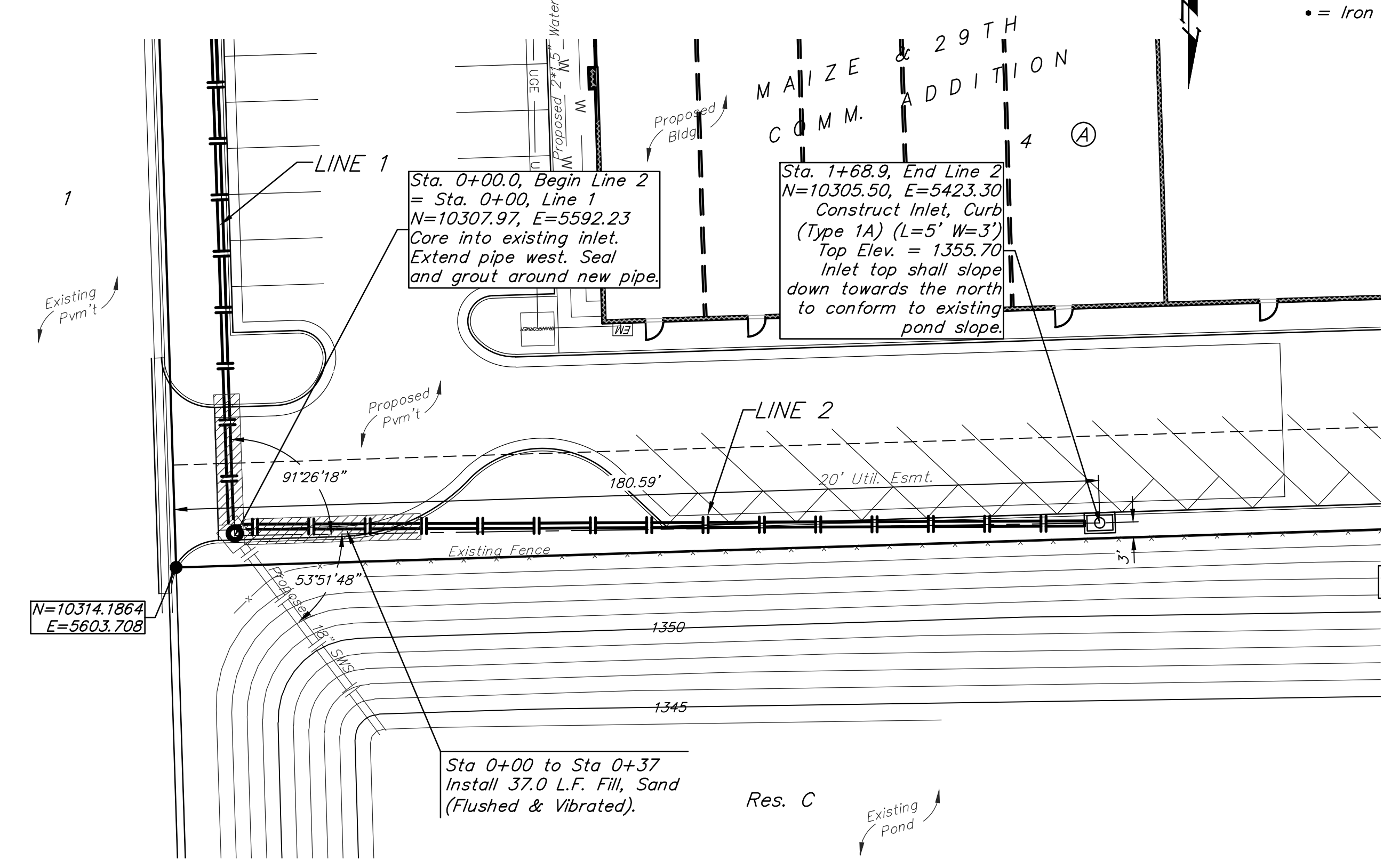
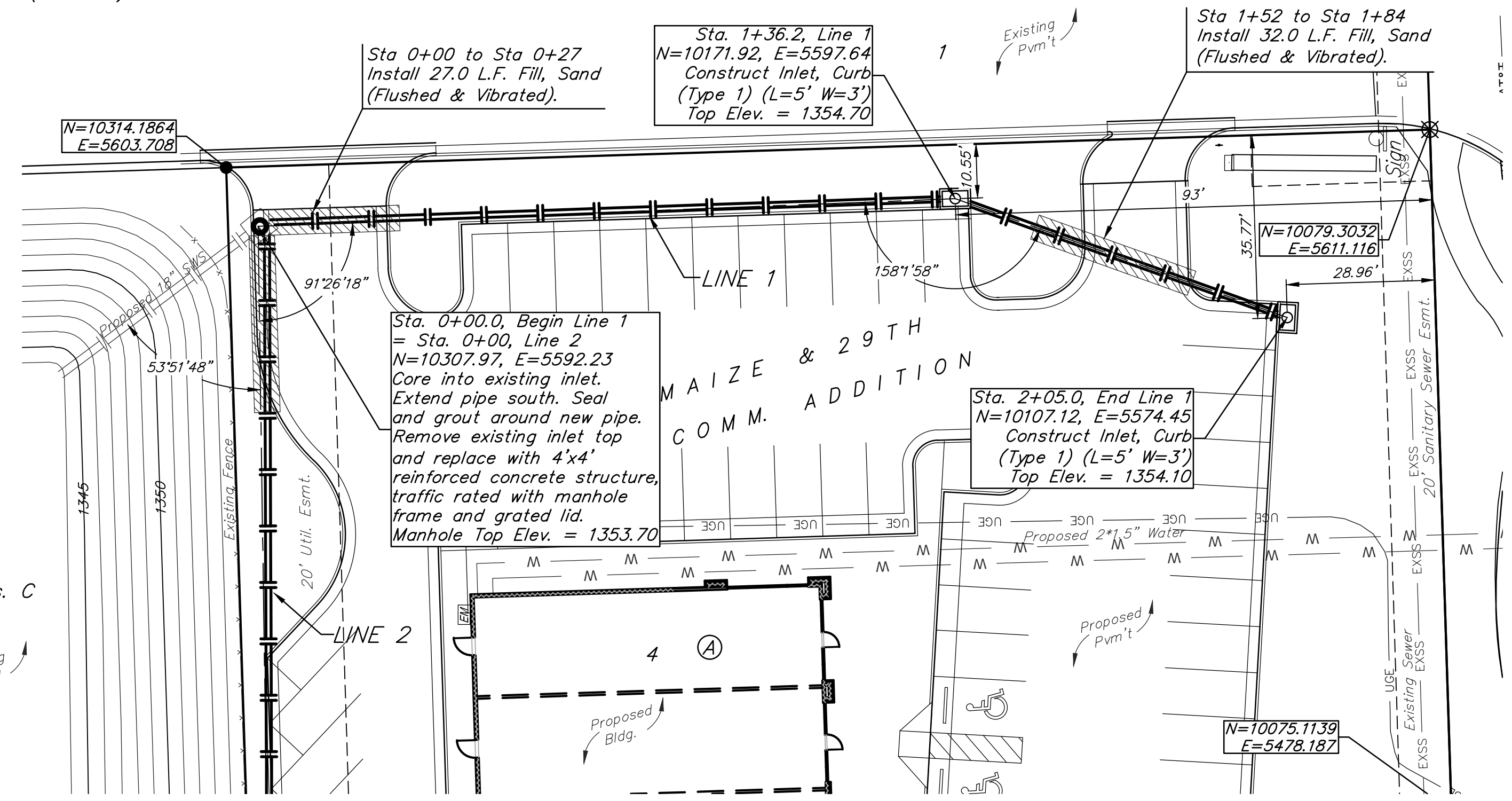
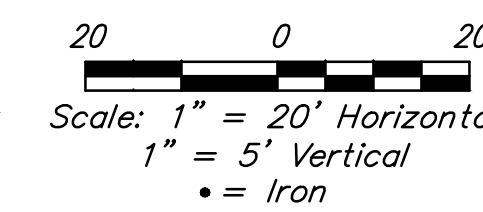
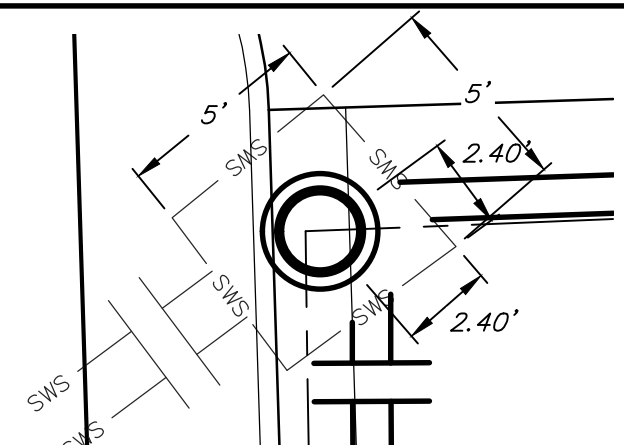
4 of 12

**BENCHMARK:**

BM #1: "X" Chiseled on Top of Concrete Drive  
Elev. = 1352.63 (NAVD 88)

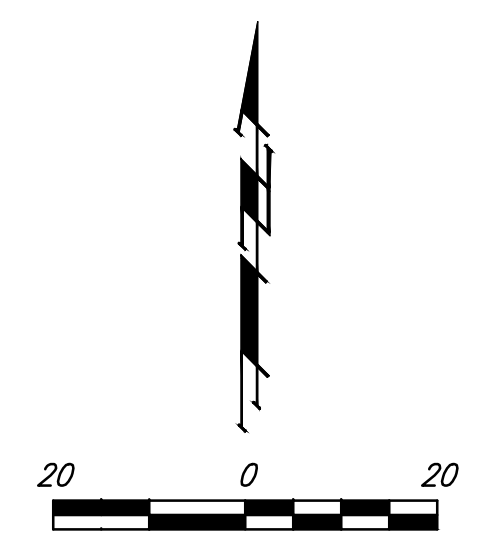
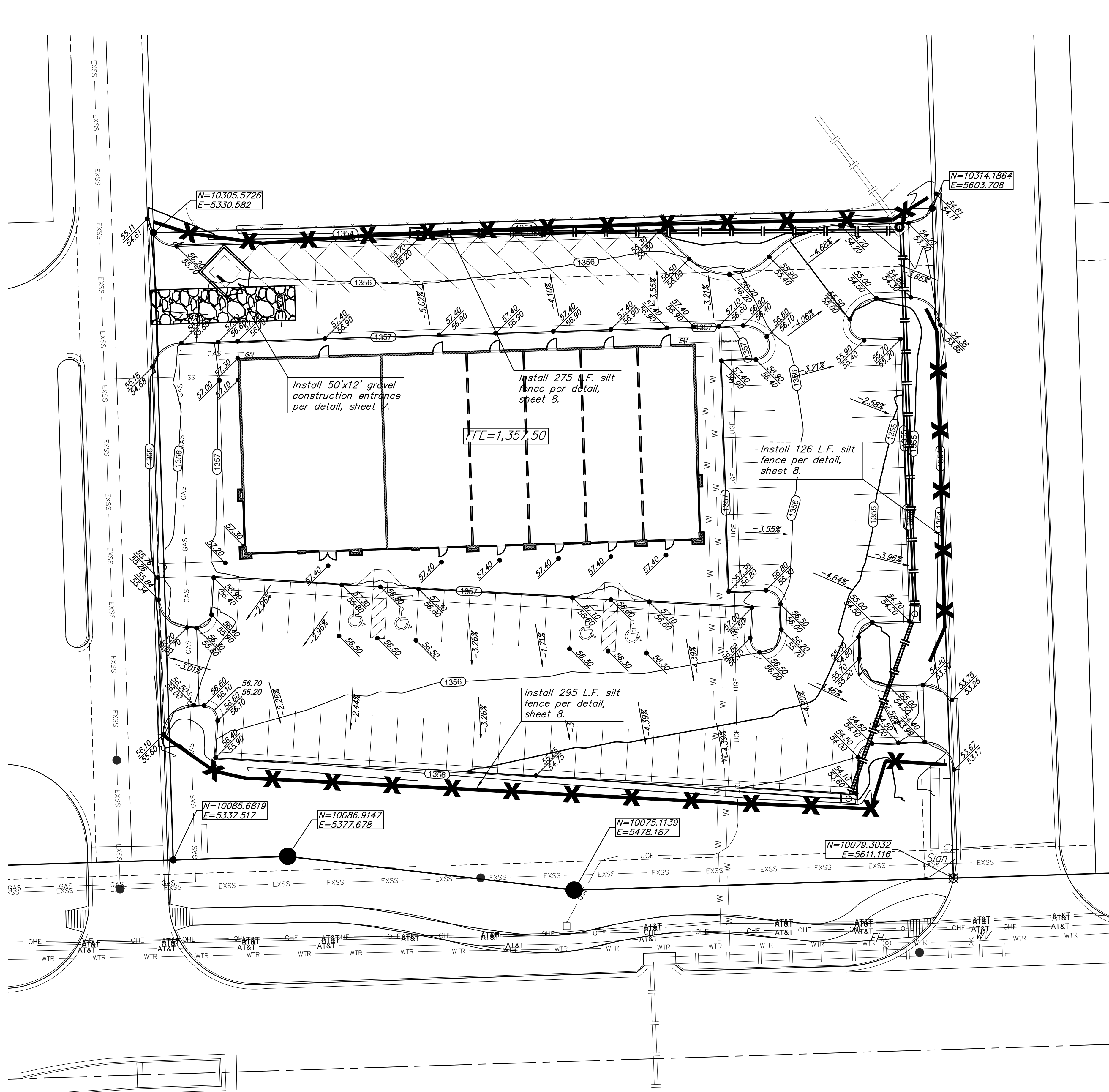
BM #2: Chiseled cross on top of curb, 959' E & 4.4' N of the SW Cor., SW1/4, Sec. 32, T-26-S, R-1-W.  
Elev. = 1352.18 (NAVD 88)

Manhole frame will be slightly offset from center of inlet as indicated. Manhole frame will sit on top of inlet top and top of lid will be flush with pavement.



|  |  |   |  |
|--|--|---|--|
|  |  | LOT 4, MAIZE & 29TH COMM. ADD.                          |  |
|  |  | <b>LINE 1 &amp; 2</b><br>STORM WATER SEWER IMPROVEMENTS |  |
| Baughman Company, P.A. 315 Ellis St., Wichita, KS 67211 P 316-262-2771 F 316-262-0149<br>ENGINEERING   SURVEYING   PLANNING   LANDSCAPE ARCHITECTURE |  |   |  |
| PROJECT NUMBER<br>0309 PPD (607861)  |  | DESIGN<br>TJW<br>DRAWN<br>TMS                           |  |
| REVISIONS:   |  | APPROVED<br>DATE<br>07/15                               |  |
| SCALE<br>Noted   |  | SHEET<br><b>5 OF 12</b>                                 |  |
| PPD.dwg  |  | 14-12-E194  |  |

**BUILT TO PLAN**



**EROSION CONTROL PLAN LEGEND**  
(Installation Details Found in the SWP2 Plan)

- DROP INLET PROTECTION
- CURB INLET PROTECTION
- DITCH CHECKS
- SILT FENCING
- CUT-OFF TRENCH
- BACK OF CURB PROTECTION
- EROSION CONTROL MAT
- TEMPORARY DITCH

NO SCALE

| EROSION CONTROL MEASURE      | INSTALL | MAINTAIN | REMOVE |
|------------------------------|---------|----------|--------|
| BACK OF CURB PROTECTION (LF) | 0       | 0        | 0      |
| CONSTRUCTION ENTRANCE (EA)   | 1       | 0        | 0      |
| CURB INLET BARRIER (EA)      | 0       | 0        | 0      |
| DITCH CHECK (EA)             | 0       | 0        | 0      |
| DROP INLET PROTECTION (EA)   | 0       | 0        | 0      |
| EROSION CONTROL (LS)         | 0       | 0        | 0      |
| EROSION CONTROL BERM (LF)    | 0       | 0        | 0      |
| SILT FENCE (LF)              | 696     | 0        | 0      |
| EROSION CONTROL MAT (SY)     | 0       | 0        | 0      |

QUANTITIES ARE FOR INFORMATION ONLY! CONTRACTOR SHALL VERIFY QUANTITIES PER FINAL BID QUANTITY SHEET.

\* ALL EXISTING BMPs INCLUDING CONSTRUCTION ENTRANCE, SEDIMENT BARRIERS, SILT FENCE, CUT-OFF TRENCH, AND EROSION CONTROL MAT SHALL BE MAINTAINED AND REPAIRED IF NECESSARY. REPLACEMENT OR REMOVAL OF EROSION CONTROL MEASURES TO BE PAID FOR BY L.S. BID ITEM "MAINTAIN EXISTING EROSION CONTROL BMPs"

**Baughman**

Engineering | Surveying | Planning | Landscape Architecture

LOT 4, MAIZE & 29TH COMM. ADD.

**ESMT. GRADING & EROSION CONTROL PLAN**

STORM WATER SEWER IMPROVEMENTS

PROJECT NUMBER: 0309 PPD (607861)

DESIGN: TJW, DRAWN: TMS

APPROVED: DATE: 07/15

SCALE: Noted

SHEET: **6 OF 12**

# MAIZE & 29TH COMMERCIAL ADDITION WICHITA, SEDGWICK COUNTY, KANSAS

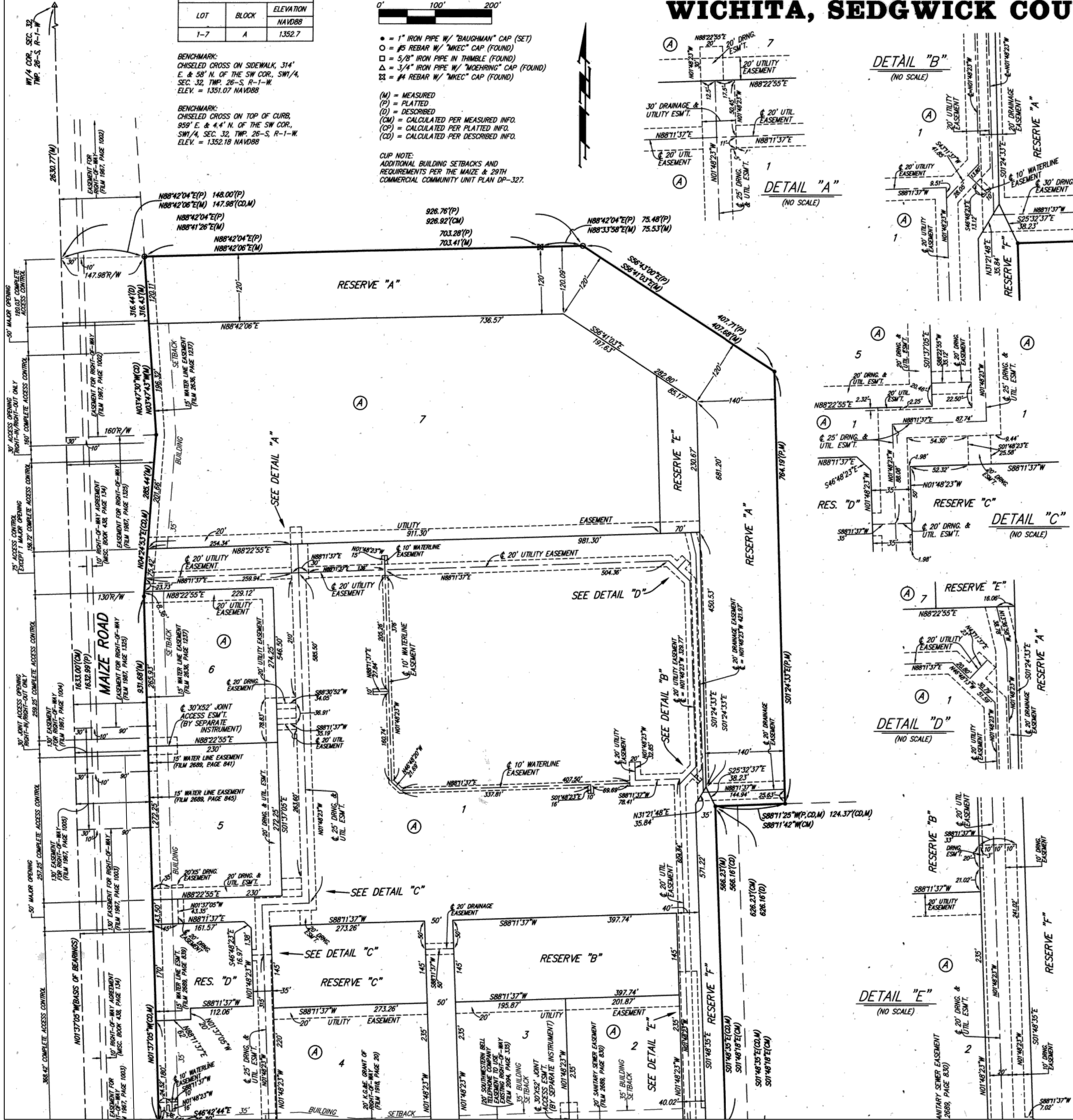
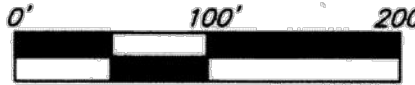
| MINIMUM BUILDING PAD ELEVATIONS FOR LOWEST OPENING TO THE STRUCTURES |       |           |
|--|-------|-----------|
| LOT  | BLOCK | ELEVATION |
| 1-7  | A     | 1352.7    |

BENCHMARK:  
CHISELED CROSS ON SIDEWALK, 314' E & 58' N. OF THE SW COR., SW 1/4, SEC. 32, TWP. 26-S, R-1-W.  
ELEV. = 1351.07 NAVD88

BENCHMARK:  
CHISELED CROSS ON TOP OF CURB, 959' E & 4.4' N. OF THE SW COR., SW 1/4, SEC. 32, TWP. 26-S, R-1-W.  
ELEV. = 1352.18 NAVD88

(M) = MEASURED  
(P) = PLATTED  
(D) = DESCRIBED  
(CM) = CALCULATED PER MEASURED INFO.  
(CP) = CALCULATED PER PLATTED INFO.  
(CD) = CALCULATED PER DESCRIBED INFO.

CRIP NOTE:  
ADDITIONAL BUILDING SETBACKS AND REQUIREMENTS PER THE MAIZE & 29TH COMMERCIAL COMMUNITY UNIT PLAN DP-327.



DETAIL "B"  
(NO SCALE)

DETAIL "A"  
(NO SCALE)

DETAIL "C"  
(NO SCALE)

DETAIL "D"  
(NO SCALE)

DETAIL "E"  
(NO SCALE)

State of Kansas) SS We, Baughman Company, P.A., Surveyors in aforesaid county and state do hereby certify that we have surveyed and platted "MAIZE & 29TH COMMERCIAL ADDITION", Wichita, Sedgwick County, Kansas and that the accompanying plat is a true and correct exhibit of the property surveyed, described as the Southwest Quarter of Section 32, Township 26 South, Range 1 West of the 6th P.M., Sedgwick County, Kansas, EXCEPT a tract described as commencing at the southwest corner of the East Half of the South Half of said Southwest Quarter; thence N90°00'00"W (assumed) along the south line of said Southwest Quarter, 140.00 feet; thence N00°00'00"E, 626.16 feet; thence S90°00'00"E, 626.16 feet; thence S00°00'00"W, 626.16 feet; thence N90°00'00"W, 486.16 feet to the point of beginning, and EXCEPT a tract described as commencing at the southwest corner of the East Half of the South Half of said Southwest Quarter; thence N90°00'00"W (assumed) along the south line of said Southwest Quarter, 140.00 feet to the point of beginning, being the southwest corner of a tract of land recorded in the Register of Deeds Office on Warranty Deed in Film 1207, Page 248; thence along the south line of said Section, N90°00'00"W, 40 feet; thence N00°00'00"E, 626.16 feet; thence N90°00'00"E, 40 feet to the northwest corner of said Deed; thence S00°00'00"W, 626.16 feet along the west line of said Deed to the point of beginning, and EXCEPT that portion of said Southwest Quarter platted as Fox Ridge Addition, an Addition to Wichita, Sedgwick County, Kansas and Fox Ridge Second Addition, an Addition to Wichita, Sedgwick County, Kansas, all being subject to road rights-of-way of record.

Existing public easements and dedications being vacated by virtue of K.S.A. 12-5126, as amended.  
Baughman Company, P.A.

Michael G. Conroy, Surveyor  
Michael G. Conroy

Know all men by these presents that we, the undersigned, have caused the land in the surveyors certificate to be platted into Lots, a Block, Reserves, and Streets, to be known as "MAIZE & 29TH COMMERCIAL ADDITION", Wichita, Sedgwick County, Kansas. The utility easements are hereby granted as indicated for the construction and maintenance of all public utilities. The drainage and utility easements are hereby granted as indicated for drainage purposes and for the construction and maintenance of all public utilities. The drainage easements are hereby granted as indicated for drainage purposes. The waterline easements are hereby granted as indicated for the construction and maintenance of all public waterlines and related appurtenances. The streets are hereby dedicated to and for the use of the public. Reserve "A" is hereby reserved for landscaping, screening walls, fencing, berms, site lighting, open space, drainage purposes, and waterlines and related appurtenances as confined to easement. Site lighting shall be installed within the westerly and southerly 10 feet of Reserve "A". Reserve "A" shall be owned and maintained by the owner of Lot 1, Block A provided, however, that the undersigned, or the undersigned's successor in interest, may, in their discretion, deed a parcel of Reserve "A" to an owner or owners of an adjacent parcel, subject to the obligation to maintain such deeded parcel of said Reserve "A" in compliance with the provisions hereof and in compliance with the maintenance covenants of any applicable restrictive covenants and/or regulations. Reserves "B" and "C" shall be reserved for open space, landscaping, berms, lakes, and drainage purposes. Reserve "D" shall be reserved for open space, landscaping, berms, lakes, drainage purposes, and utilities as confined to easements. Reserve "E" is hereby reserved for landscaping, screening walls, fencing, berms, site lighting, open space, drainage purposes, and sanitary sewer systems as confined to easements. Site lighting shall be installed within the westerly 10 feet of Reserve "E". Reserves "B", "C", "D" and "E" shall be owned and maintained by the owner of Lot 1, Block A. Reserve "E" shall be owned and maintained by the owner of Lot 7, Block A. Access controls shall be as depicted on the face of the plat and are hereby granted to the City of Wichita, Kansas. The Minimum Building Pad Elevations for the lowest opening to the structures shall be as indicated on the face of the plat.

Leo Marvin Rink Revocable Trust  
Leo Marvin Rink, Trustee  
Vivian L. Rink, Trustee  
Vivian L. Rink Revocable Trust

This plat of "MAIZE & 29TH ADDITION", Wichita, Sedgwick County, Kansas has been approved by the Wichita-Sedgwick County Metropolitan Area Commission, Wichita, Kansas.  
Dated this 21st day of FEBRUARY, 2013  
Wichita-Sedgwick County Metropolitan Area Planning Commission

David Dennis  
John L. Schlegel  
Carl Brewer  
Karen Sublett

Reviewed in accordance with K.S.A. 12-5126, as amended.  
on this 1st day of May, 2013.

Tricia L. Robello, L.S. #124  
Deputy County Surveyor  
Sedgwick County, Kansas

Entered on transfer record this 1st day of May, 2013.  
Kelly B. Arnold

State of Kansas) SS This is to certify that this plat was filed for record in the office of the Register of Deeds, Sedgwick County, Kansas, on this 1st day of May, 2013 at 2:23 o'clock P.M. and is correct.

Bill Meek, Register of Deeds  
Buckingham

State of Kansas) SS The foregoing instrument acknowledged to me, this 22nd day of APRIL, 2013, by Leo Marvin Rink, Trustees of the Leo Marvin Rink Revocable Trust, and Vivian L. Rink, Trustees of the Vivian L. Rink and Leo Marvin Rink, Trustees of the Vivian Rink Revocable Trust, on behalf of the trusts.

JUDITH M. TERHUNE  
Notary Public - State of Kansas  
My App. Expires 11-7-15  
JUDITH M. TERHUNE

State of Kansas) SS The foregoing instrument acknowledged to me, this 22nd day of APRIL, 2013, by Curtis Karen S. Rink, husband and wife.  
JUDITH M. TERHUNE  
Notary Public - State of Kansas  
My App. Expires 11-7-15  
JUDITH M. TERHUNE