

STORM SEWER & WATER IMPROVEMENTS

to serve

USD 259 SOUTHEAST HIGH SCHOOL

2641 S. 127th Street East
CITY OF WICHITA, KANSAS

Gary Janzen, P.E. City Engineer

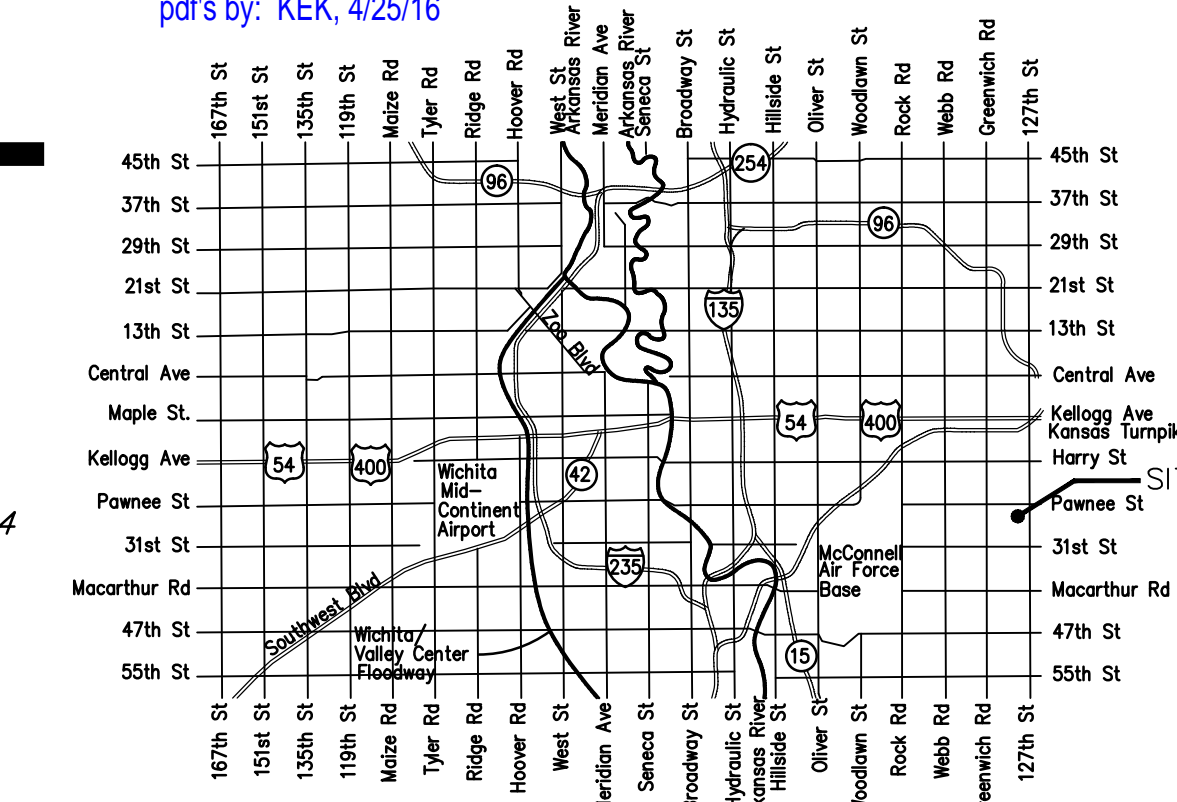
Project Number

0375 PPD (607861)

1977 PPW (607853)

AS BUILT PLANS

Contractor: McCullough Excavating
Inspector: Fred Smith, Baughman Co.
pdf's by: KEK, 4/25/16



Vicinity Map

Sheet Index

Title Sheet	1
Water Line Adjustment Plan	2
Line 1	3-4
Line 2	5
Water Line Detail	6
Drainage Plan	7
Copy of Plat	8

SWS Details SW-201, SW-301, SW-303, BMP Details SW501-SW504 are available at City of Wichita web site at <http://www.wichita.gov/Government/Departments/PWU/Pages/Regulations.aspx>

GENERAL NOTES:

- The Contractor shall comply with all applicable safety regulations. All construction shall be completed following current City Standard Specifications and Special Provisions.
- Contractor will be required to provide notice to utility companies a minimum of seventy-two (72) hours prior to any excavation, as follows:

Kansas One-Call 687-2470

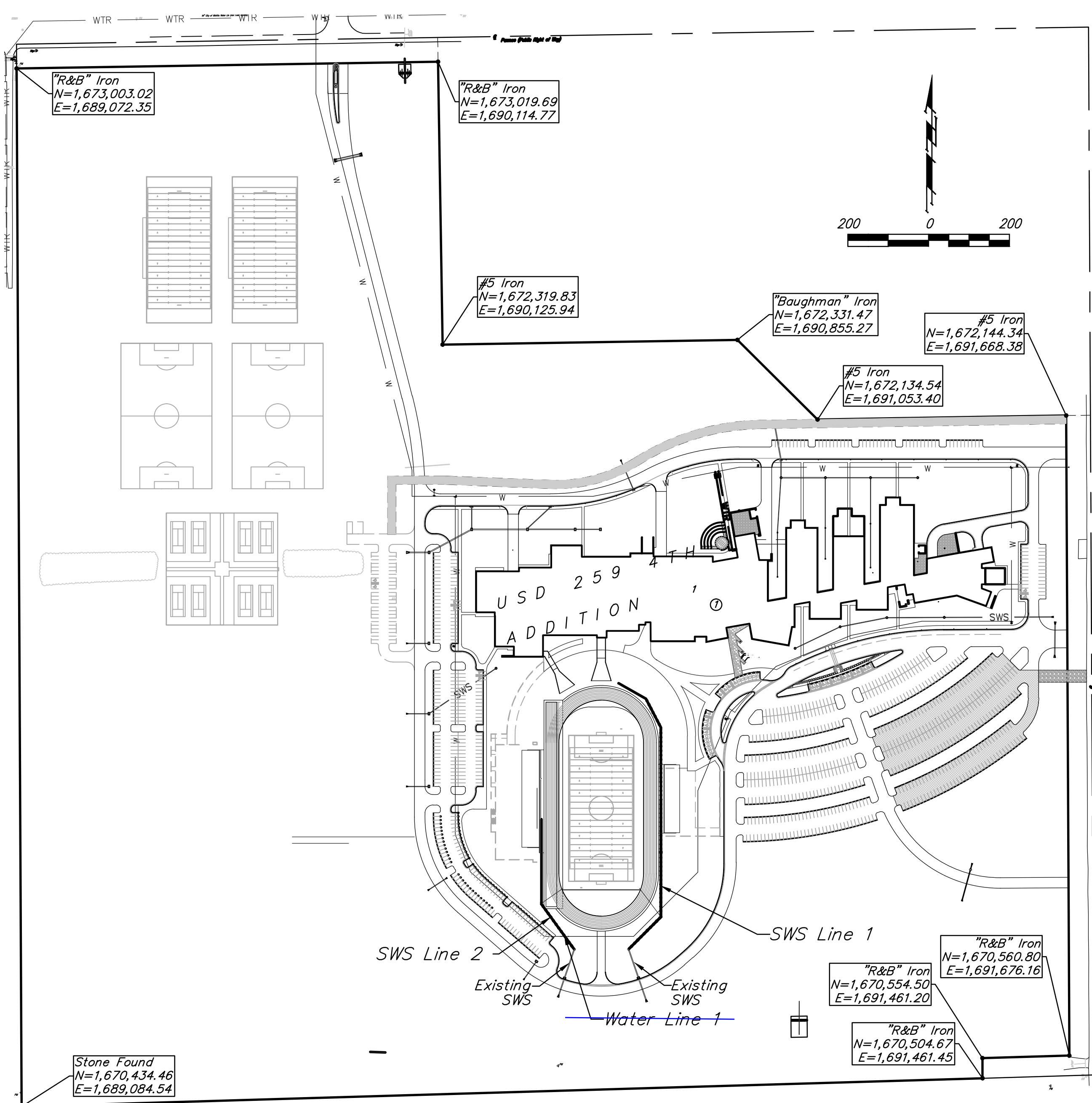
The Contractor must notify the following in case of an emergency:

AT&T 1-800-246-8464
Black Hills Energy 1-800-694-8989
City of Wichita Sewer 1-316-268-4555
City of Wichita Stormwater 1-316-268-4073
City of Wichita Traffic 1-316-268-4090
Cox Communications 1-316-268-4034
Kansas Gas Service 1-888-249-3530
Westar Energy 1-888-482-4950
1-800-544-4857
- Utility service lines, poles, etc. are to be adjusted as necessary by others prior to construction unless the plans specifically call for their adjustment by the Contractor or unless the plans specifically identify a utility to be adjusted by its owner during construction. Existing utilities and their location, as shown on the plans, represent the best information obtainable for design. The Contractor will be required to work around existing utilities within the right-of-way which do not conflict with proposed construction.
- Rubble from the removal of miscellaneous structures and excess excavation which is to be wasted shall be disposed of on sites to be provided by the Contractor. These sites shall be approved by the Engineer as to suitability, appearance and site location. Locations, in the opinion of the Engineer, that will leave an unsightly appearance will not be approved. All disposal sites must be approved by the Kansas Department of Health and Environment. Material either stockpiled or disposed of in a flood plain would require a Kansas State Board of Agriculture permit. Any material dumped in waters of the United States or wetlands is subject to U.S. Corps. of Engineers permitting regulations. Any material buried or stockpiled beyond approved construction limits would require additional archaeological investigations unless buried in a previously approved borrow location.
- Trees and shrubs in public right-of-way which are in direct conflict with proposed new construction shall be removed by the Contractor with the Engineer's approval. Trees and shrubs which are not in direct conflict with proposed new construction shall be saved and protected from damage.
- The Contractor shall give all property owners and/or tenants of developed property abutting the construction of this project a minimum of ten (10) days notice prior to start of construction.
- The Contractor shall be responsible for preserving property irons. The Contractor will be required to re-establish any property irons which are damaged or destroyed by his construction operations. Such irons shall be re-established by a licensed land surveyor in accordance with state laws.
- The Water Distribution Division shall field locate water valve one time during construction when requested by the Contractor. It shall be the Contractor's responsibility to preserve such field locations during the construction process. Water valves, valve boxes or fire hydrants damaged during construction shall be repaired by Contractor at his own expense. Valve boxes and water meters within the project limits shall be adjusted to match field grades.
- The Contractor shall notify the consultant engineer and Tom Mason with the City at 316-268-4574 with the anticipated construction start date and notify them of project completion. Staking and inspection for this project will be the responsibility of the Contractor.
- If traffic is impacted by construction, a traffic control plan must be submitted and approved by the City Traffic Engineer, Brian Coon at traffic@wichita.gov before construction can begin. The Contractor shall be responsible for all traffic control measures to facilitate construction. All construction zone markings and signage shall conform to the latest version of Manual on Uniform Traffic Control Devices (MUTCD) as published by the US Dept. of Transportation, Federal Highway Administration. All costs associated with construction markings and signage shall be the Contractor's responsibility.
- All elevations shown are NAVD 88.
- All areas disturbed during construction that will not be under proposed pavement shall be restored to match existing conditions.
- A portion of excess excavated material shall be mounded around manholes which extend more than one (1) foot above the existing ground. Such mound shall be constructed with new development a six (6) foot diameter flat top with 4 to 1 side slopes down to the original ground. The elevation of the flat top of the mound shall be 0.4 foot below the top of the manhole.
- Geotechnical report available upon request.
- Contractor shall limit the extent of trench openings overnight and weekends to less than 50 feet.
- Contractor shall provide positive drainage away from all manhole covers.
- City maintenance of storm sewer ends at right-of-way or easement line. This project will be a private system.
- Any sidewalk, drive approach, or street pavement removed to construct project must have a pavement cut permit and be replaced by the City contractor. Permits can be obtained by calling 316-268-4501 or 316-268-4480.
- The inspecting firm shall submit to the City Stormwater Maintenance Division a digital copy of the CCTV inspection of the conduits and structures following construction. The digital file formation shall be compatible with the City input template. A copy of the template is available upon request at 316-268-4090.
- All existing and proposed erosion control measures including silt fencing, erosion control mat, straw bales, inlet barriers, and const. entrance shall be maintained throughout construction by the contractor and until project is accepted by the City of Wichita. The on-site engineer shall complete weekly reports on the status of erosion control measures. The contractor shall be required to comply with maintenance and/or replacement of erosion control measures as determined by the on-site engineer until project is accepted by City of Wichita. Maintenance and/or replacement of erosion control measures to be paid by L.S. bid item "Site Restoration".
- All excess excavation shall remain on-site and shall be stockpiled or spread at a location determined by the engineer.
- The Contractor shall not begin work on the project until the Project Inspector is assigned and on site. Any work completed without inspection will be required to be uncovered for inspection at the Contractor's expense.

Benchmarks

BM #1: Chiseled Square on top of median at the entrance of Casa Bella Addition.
Elev. = 1354.46 (NAVD88)

BM #2: Railroad spike in west face of power pole located approximately 1185± south of the intersection of Pawnee and 127th Street East and Approximately 26± East of the CL of 127th Street East.
Elev. = 1362.34 (NAVD88)



Stormwater Narrative & Certification

This improvements were prepared in accordance with the current Storm Water Management Regulations as set forth in the City of Wichita's Storm Water Management Ordinance 16.32 and the policies/ guidelines presented in the Wichita/Sedgwick County Storm Water Manual.

Site Area: 5,376,950 sq. ft. (±123.44 acres)
Area Disturbed (Football Field): 205,000 sq. ft. (±4.7 acres)
Prop. Net Impervious Area*: 100,900 sq. ft. (±2.32 acres)

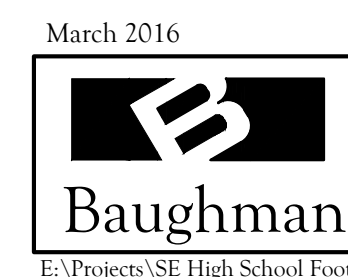
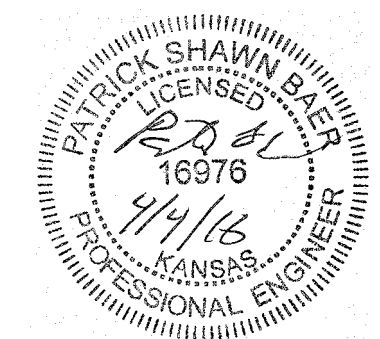
* The noted Area disturbed and 100,900sq. ft of impervious area with these improvements are included and part of the prior approved area of disturbance & net impervious area of 1,055,010 sq. ft. for the overall site.

Site Detention Requirements: **
Water Quality Requirements: **
Downstream Channel Protection: **
** The Extended Dry Detention Basins and grassed channel have been developed with 267PPD(607861) to meet the overall site improvements, including the proposed improvements noted here.

APPROVED AS NOTED
BY WICHITA PUBLIC WORKS ENGINEERING
AND STORMWATER DIVISION

Engineering *[Signature]* 4/1/16
Stormwater *[Signature]* 04/04/16

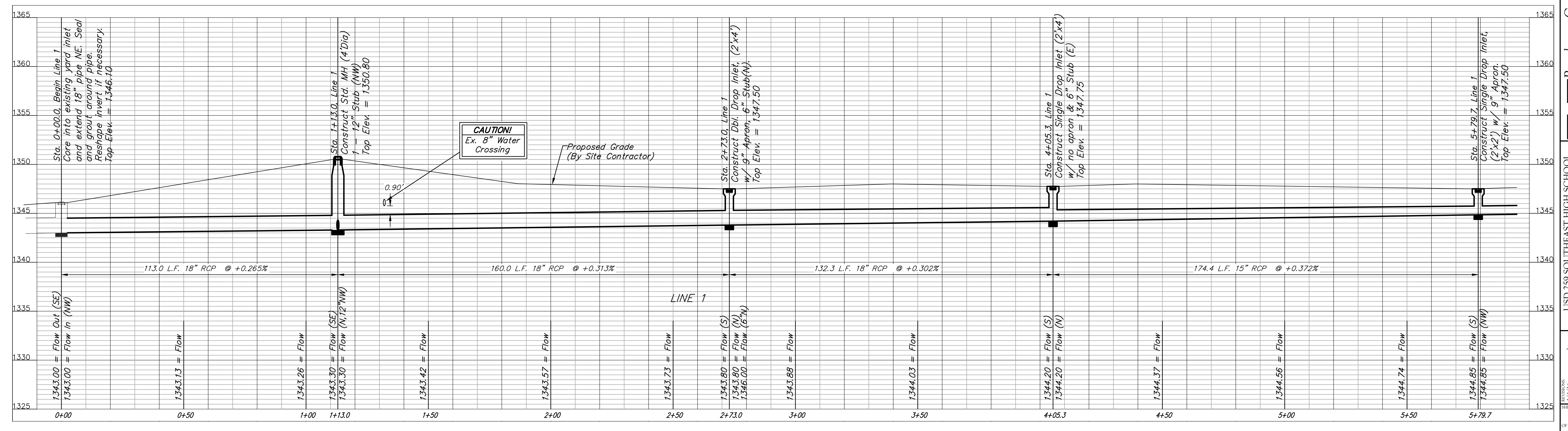
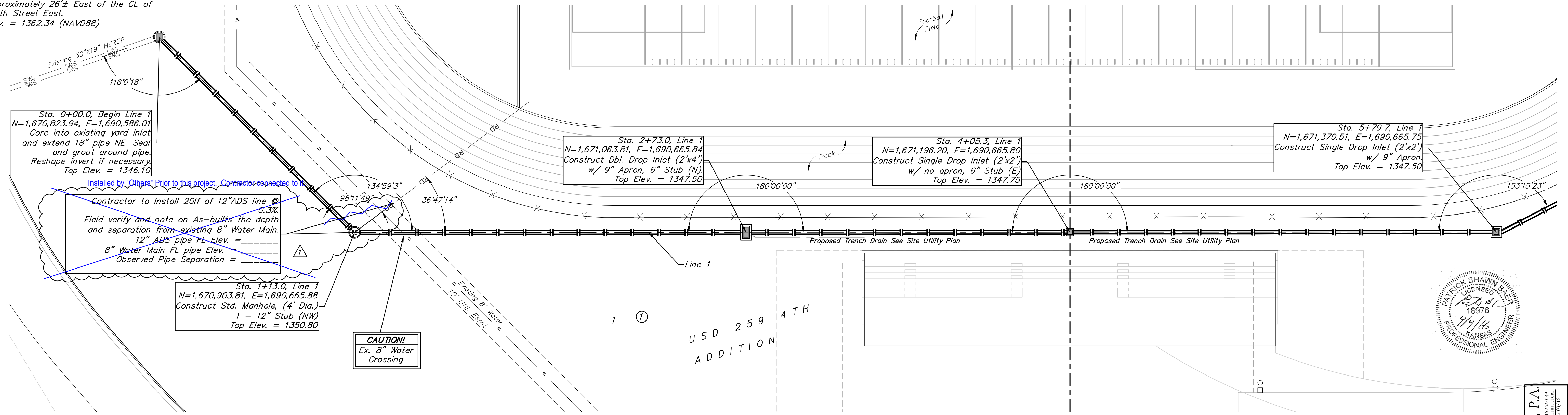
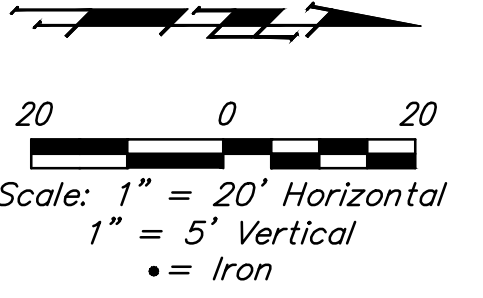
NOTE TO CONTRACTORS
Inspection and testing for this project is to be provided by a Licensed Consulting Engineering Firm under contract with the Owner/Developer. Said inspection to be in accordance with the City of Wichita standard construction engineering practices and certified by a Licensed Professional Engineer in the state of Kansas. No work shall be performed by the Contractor without such inspection nor shall any work be commenced without written authorization by City Engineering. All Construction and Materials shall comply with the current City of Wichita Specifications and Standards and Special Provisions (on file and available at Wichita.gov).
An approved copy of these plans signed by City staff are required on-site.



Baughman Company, P.A. 315 Ellis St. Wichita, KS 67211 P 316-262-7271 F 316-262-0149
ENGINEERING | SURVEYING | PLANNING | LANDSCAPE ARCHITECTURE

BENCHMARKS:
 BM #1: Chiseled Square on top of median at the entrance of Casa Bella Addition.
 Elev. = 1354.46 (NAVD88)

BM #2: Railroad spike in west face of power pole located approximately 1185'± south of the intersection of Pawnee and 127th Street East and Approximately 26'± East of the CL of 127th Street East.
 Elev. = 1362.34 (NAVD88)



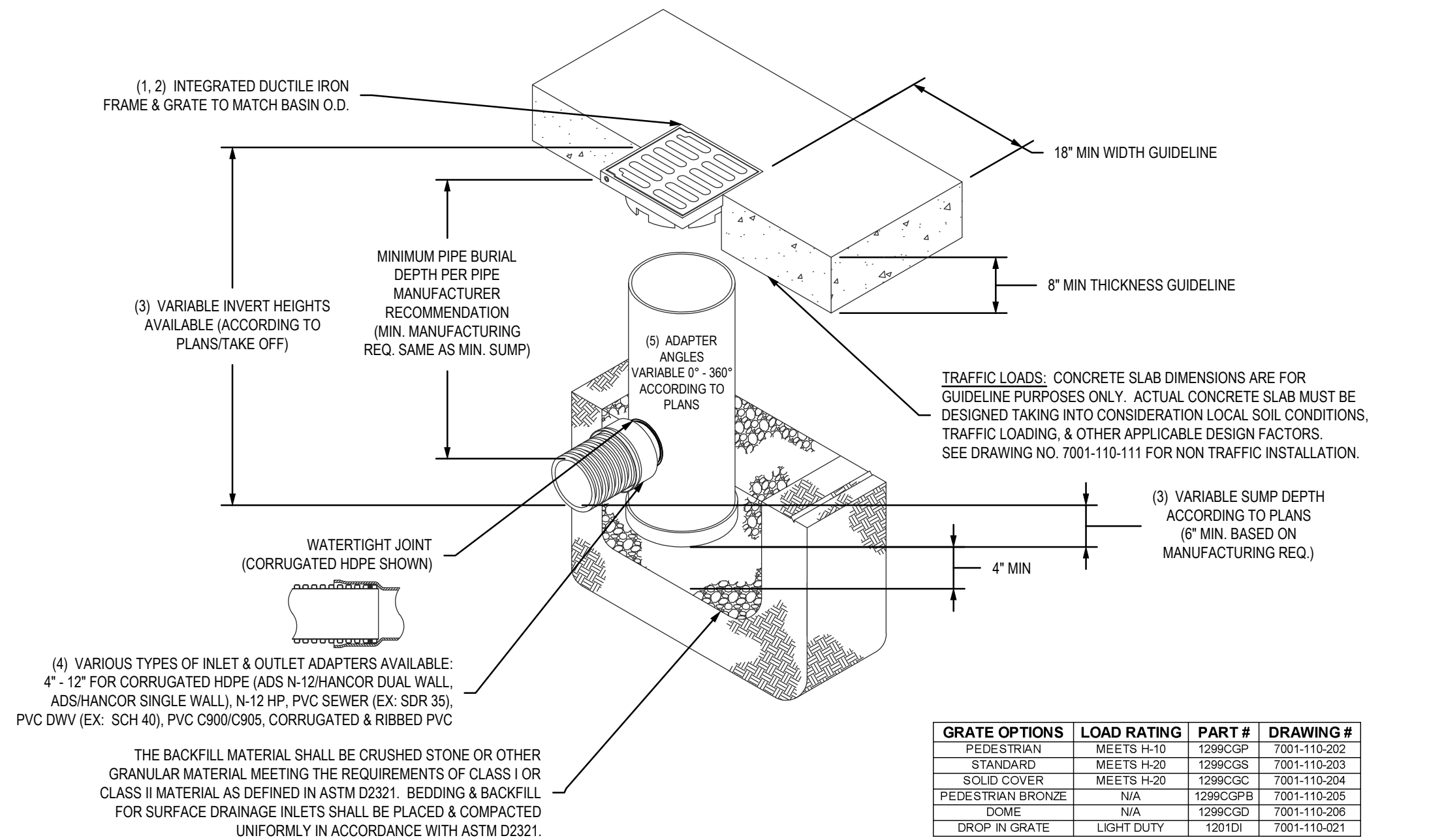
Baughman Company, P.A.
 115 E. 1st St., Wichita, KS 67201 P: 316-262-2271 F: 316-262-0140
 LICENSED PROFESSIONAL ENGINEER - KANSAS LICENSE NO. 16976
 PROJECT NO. 16-001-001-001 SHEET NO. 08 OF 08
 USD 259 SOUTHEAST HIGH SCHOOL
LINE 1
 STORM WATER SEWER IMPROVEMENTS

BENCHMARKS:

BM #1: Chiseled Square on top of median at the entrance of Casa Bella Addition.
Elev. = 1354.46 (NAVD88)

BM #2: Railroad spike in west face of power pole located approximately 1185'± south of the intersection of Pawnee and 127th Street East and approximately 26'± East of the CL of 127th Street East.
Elev. = 1362.34 (NAVD88)

NYLOPLAST 12" DRAIN BASIN: 2812AG __ X



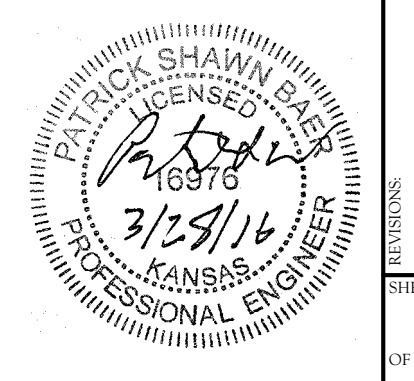
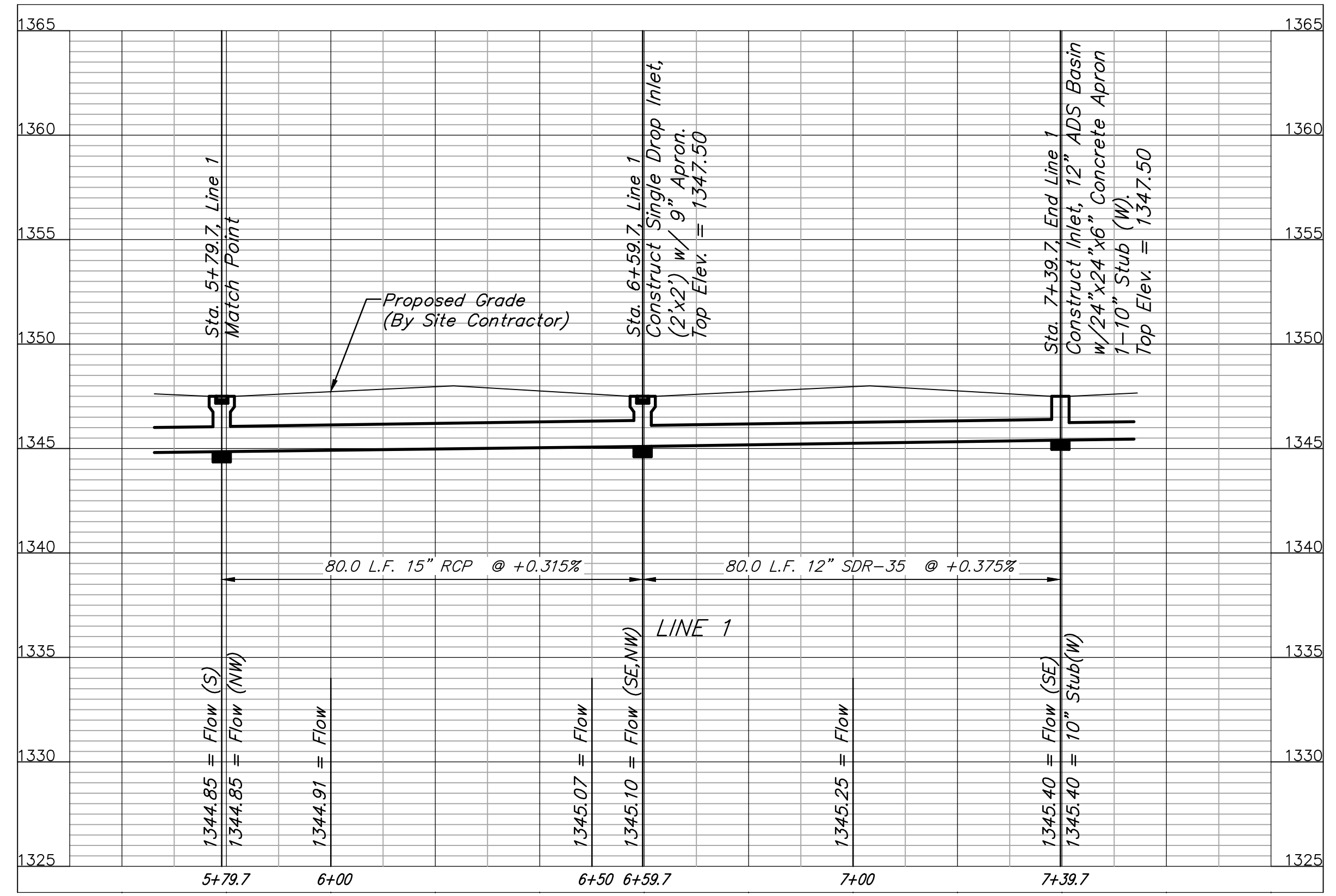
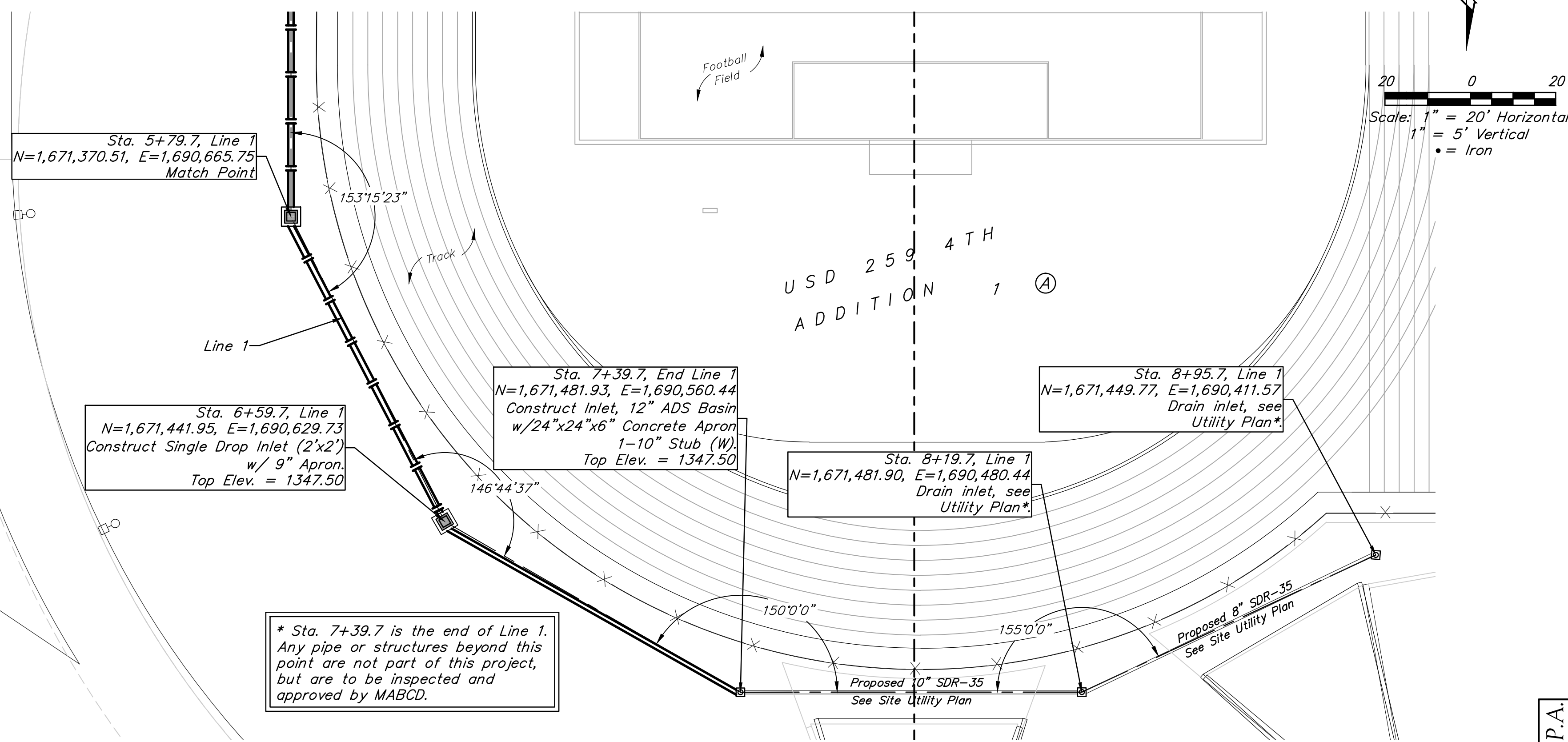
GRATE OPTIONS	LOAD RATING	PART #	DRAWING #
PEDESTRIAN	MEETS H-10	1299CGP	7001-110-202
STANDARD	MEETS H-20	1299CGS	7001-110-203
SOLID COVER	MEETS H-20	1299CGC	7001-110-204
PEDESTRIAN BRONZE	N/A	1299CGPB	7001-110-205
DOME	N/A	1299CGD	7001-110-206
DROP IN GRATE	LIGHT DUTY	1201DI	7001-110-021

1 - GRATES/SOLID COVER SHALL BE DUCTILE IRON PER ASTM A536 GRADE 70-50-05, WITH THE EXCEPTION OF THE BRONZE GRATE.
2 - FRAMES SHALL BE DUCTILE IRON PER ASTM A536 GRADE 70-50-05.
3 - DRAIN BASIN TO BE CUSTOM MANUFACTURED ACCORDING TO PLAN DETAILS. RISERS ARE NEEDED FOR BASINS OVER 8" DUE TO SHIPPING RESTRICTIONS. SEE DRAWING NO. 7001-110-065.
4 - DRAINAGE CONNECTION STUB JOINT TIGHTNESS SHALL CONFORM TO ASTM D3212 FOR CORRUGATED HDPE (ADS N-12/HANCOR DUAL WALL), N-12 HP, PVC SEWER (EX. SDR 35), N-12 HP, PVC SEWER.
5 - ADAPTERS CAN BE MOUNTED ON ANY ANGLE 0° TO 360°. TO DETERMINE MINIMUM ANGLE BETWEEN ADAPTERS SEE DRAWING NO. 7001-110-012.

THIS PRINT DISCLOSES SUBJECT MATTER IN WHICH NYLOPLAST HAS PROPRIETARY RIGHTS. THE RECEIPT OR POSSESSION OF THIS PRINT DOES NOT CONFER, TRANSFER, OR LICENSE THE USE OF THE DESIGN OR TECHNICAL INFORMATION SHOWN HEREIN. REPRODUCTION OF THIS PRINT OR ANY INFORMATION CONTAINED HEREIN, OR MANUFACTURE OF ANY ARTICLE HEREFROM, FOR THE DISCLOSURE TO OTHERS IS FORBIDDEN, EXCEPT BY SPECIFIC WRITTEN PERMISSION FROM NYLOPLAST.

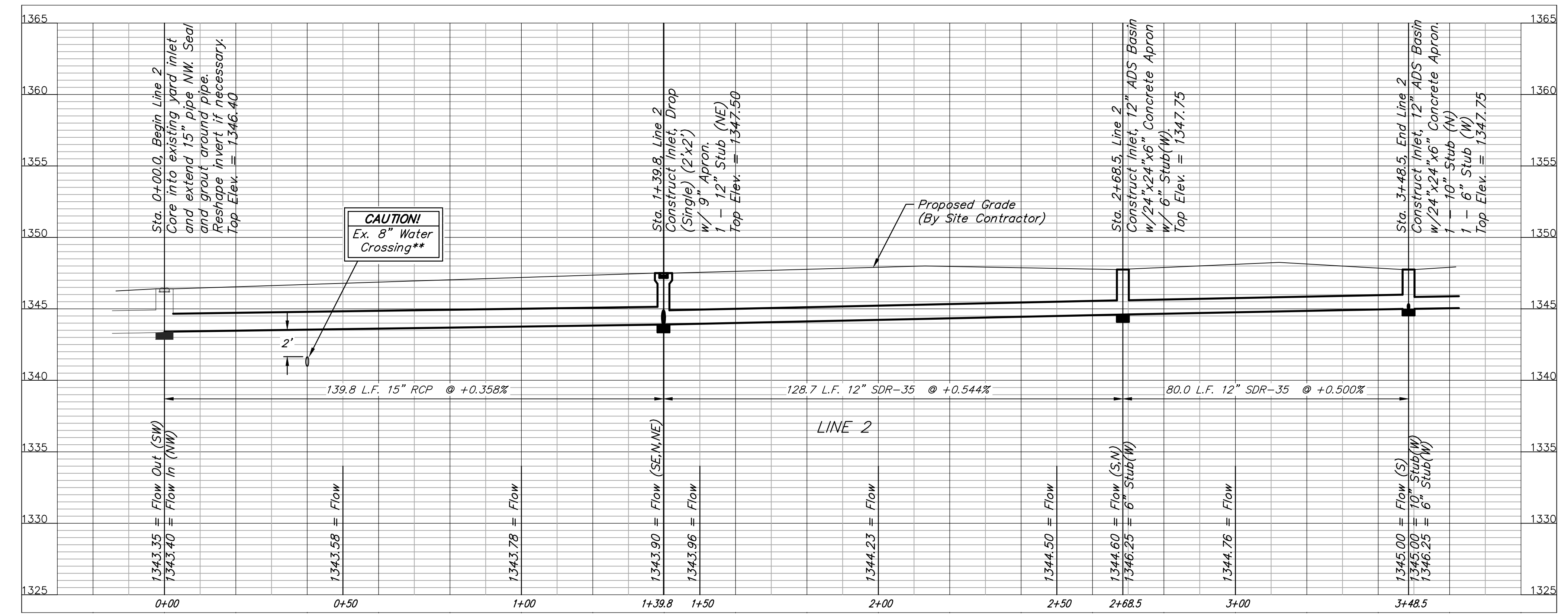
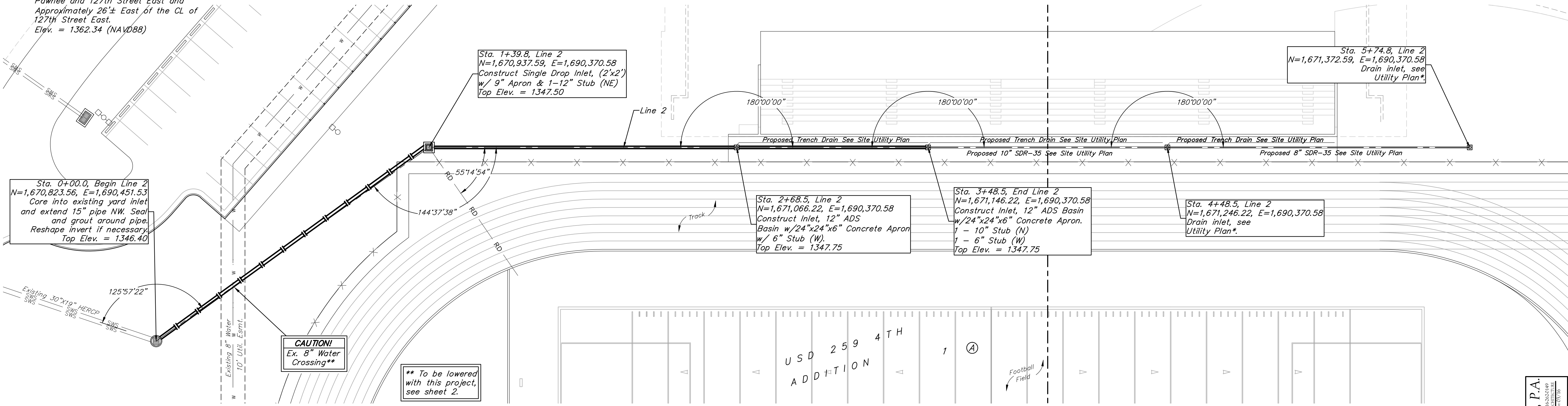
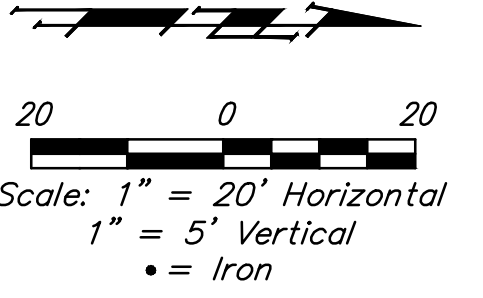
3150 VERONA AVE
BUFORD, GA 30518
PHN (770) 932-2443
FAX (770) 932-2490
www.nyloplast.com

Nyloplast
12 IN DRAIN BASIN QUICK SPEC INSTALLATION DETAIL
DWG NO. 7001-110-189 REV D



BENCHMARKS:
 BM #1: Chiseled Square on top of median at the entrance of Casa Bella Addition.
 Elev. = 1354.46 (NAVD88)

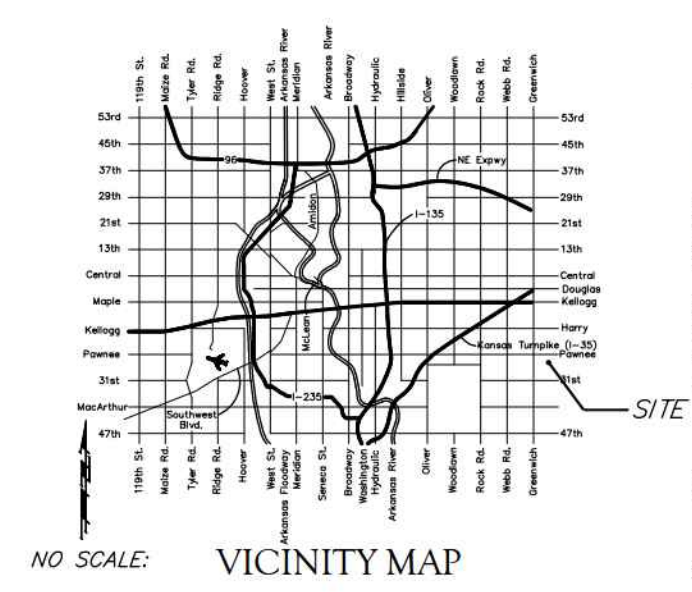
BM #2: Railroad spike in west face of power pole located approximately 1185'± south of the intersection of Pawnee and 127th Street East and Approximately 26'± East of the CL of 127th Street East.
 Elev. = 1362.34 (NAVD88)



* Sta. 3+48.5 is the end of Line 2. Any pipe or structures beyond this point are not part of this project, but are to be inspected and approved by MABCD.



For Reference Only
See Site Plans
Not To Scale



LEGAL DESCRIPTION
 Lot 1, Block 1, USD 259 4th Addition,
 Wichita, Sedgewick County, Kansas.

BENCHMARKS
 BENCH MARK #1: CHISELED SQUARE ON TOP OF MEDIAN AT THE
 ENTRANCE OF CASA BELLA ADDITION.
 ELEVATION = 1354.46 (NAVD88)

BENCH MARK #2: RAILROAD SPIKE IN WEST FACE OF POWER POLE
 LOCATED APPROXIMATELY 1185'± SOUTH OF THE INTERSECTION OF
 FARMER AND 12TH STREET EAST AND APPROXIMATELY 26'± EAST OF
 THE CENTERLINE OF 12TH STREET EAST
 ELEVATION = 1362.34 (NAVD88)

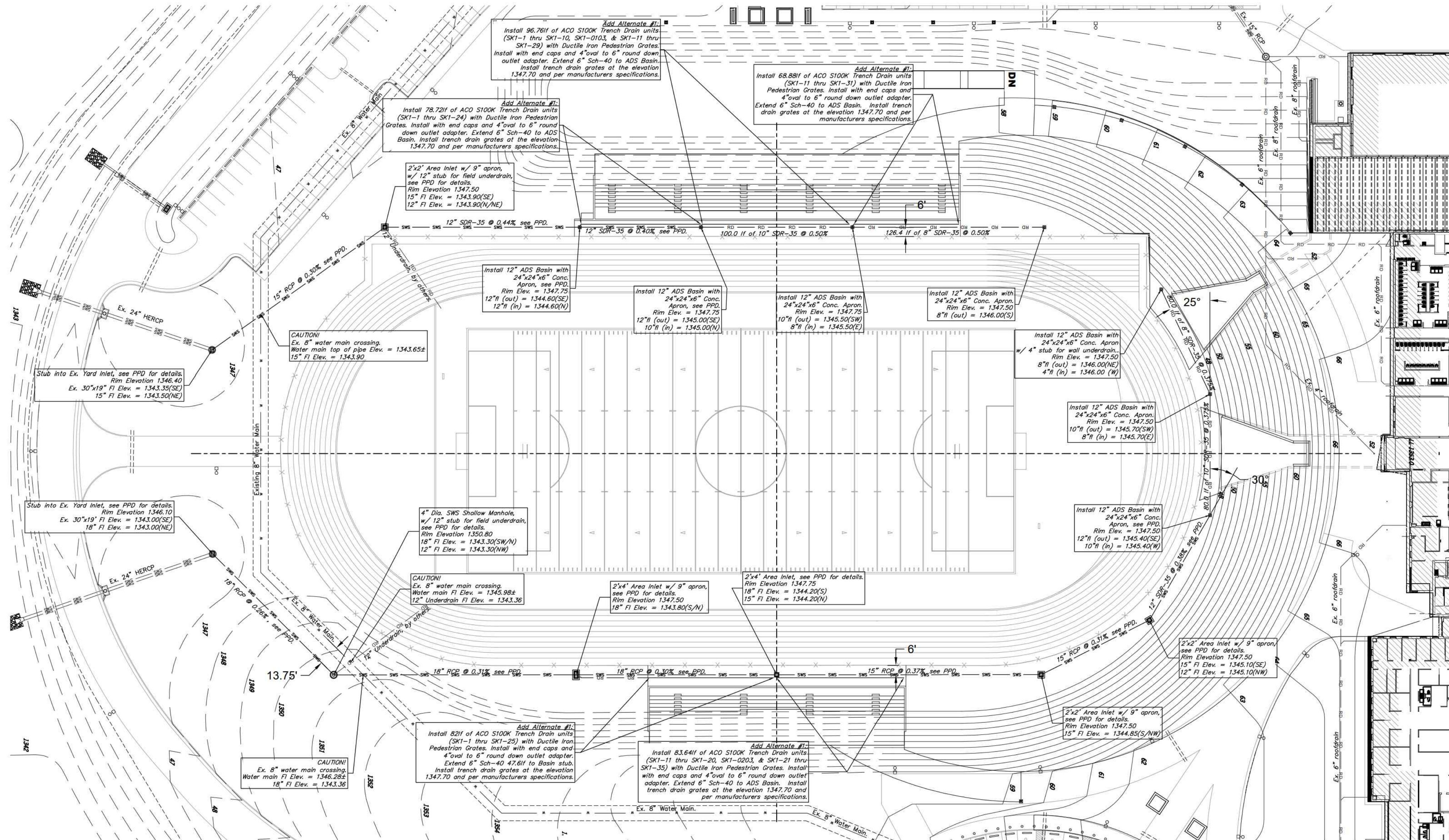
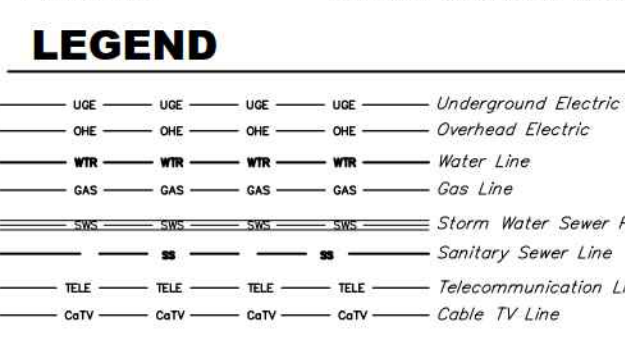
UTILITY NOTES

- Contractor shall be required to provide notice to Kansas One Call at 888-2470 a minimum of two (2) working days prior to any excavation or work adjacent to utilities.
- The Contractor must notify the following in case of an emergency:
 - Kansas Gas Service (Gas).....1-888-482-4950
 - Black Hills Energy (Gas).....1-800-303-1357
 - Westar Energy (Electric).....383-8650
 - Gas Communications (Telecommunication).....262-4270
 - AT&T (Telecommunication).....268-2759
 - 268-4563
 - City of Wichita Water Dept. (Water).....268-4908
 - or 268-4024
 - City of Wichita Sewer Maint. (San. Sewer).....268-4024
 - or 262-8000
 - City of Wichita Storm Sewer Maint. (Storm Sewer).....268-4099
 - City of Wichita Traffic Maint. (Traffic Control).....268-4034
 - or 268-4203
 - Conoco Pipeline Co. (Petroleum).....1-800-231-2551
 - Williams Pipeline Co. (Petroleum).....529-8600
 - or 1-800-354-8698
 - Phillips Pipeline Co. (Petroleum).....1-800-766-8230
- Existing utilities and their locations, as shown on the plans, represent the best information obtainable for design. Location information has been obtained from the various utility companies and is either from company record drawings or company provided field locations. The Contractor will be required to work around existing utilities which do not conflict with proposed construction.
- Traffic affected by the construction on this project shall be handled in accordance with the latest edition of the Local Manual on Uniform Traffic Control Devices.
- The Contractor shall verify all utility locations prior to construction of this project.
- Refer to Landscape Plan for treatment of disturbed areas.
- Proposed Water Main and Fire Hydrants shall be the contractor's responsibility. This portion of the project shall be constructed under "Private Project." The Water Main and Fire Hydrants shall be designed separately, and undergo Local City review and approval. The installation of the Water Main and Fire Hydrants are required to be done by a bonded contractor, inspected and verified. Refer to Separate Water Main and Fire Hydrants Plan Set. The Contractor shall construct the Water Main and Fire Hydrants only from Local City approved plans which will be provided to the General Contractor or can be provided by Baughman Company, P.A.
- Proposed storm water sewer shall be the contractor's responsibility. This portion of the project shall be constructed under "Private Project." The storm sewer system shall be designed separately, and undergo Local City review and approval. The installation of the storm sewer is required to be done by a bonded contractor, inspected and certified. Refer to Separate Sewer and Storm Water Sewer Plan Set. The Contractor shall construct the sewer only from Local City approved plans which will be provided to the General Contractor or can be provided by Baughman Company, P.A.
- The Contractor shall receive written approval from adjacent landowners prior to proceeding with any construction work on landowner's property.
- Gas service tie-ins to new meters shall be per service provider standards. Tie-ins are to be above ground at the meter.
- Utility service connections are to be installed per applicable Local City Codes.
- Contractor shall be responsible for coordination of all utility service connections and all permits.
- Water taps to be made by Local City Water Department. Contractor to reimburse City for tapping costs.
- See Landscape Plans for irrigation sleeve locations throughout site. Sleeves shown on Utility Plan.

SITE ERU INFORMATION

Total Area: ±5,376,950 sq. ft. (123.44 acres)
 Existing Impervious Area: ±5,376,950 sq. ft. (123.44 acres)

Addition & Renovations: ±5,376,950 sq. ft. (123.44 acres)
 Impervious Area: ±1,182,499 sq. ft. (27.15 acres)
 Building Area: ±221,704 sq. ft. (5.09 acres)
 Pervious Area: ±4,194,451 sq. ft. (96.29 acres)



FOOTBALL STADIUM DRAINAGE PLAN
 Scale 1" = 30'-0"



SCHAFFER JOHNSON COOK FREY ARCHITECTURE
 Empire Center
 207 N. Broadway
 67202-2317
 Fax: 316.84.8455
 www.j.c.f.a.com
 architect@jcf.com

DUDLEY WILLIAMS & ASSOCIATES, P.A.
 MECHANICAL ENGINEERS
 JOHNSON ENGINEERING
 ELECTRICAL ENGINEERS
 AVANT ACOUSTICS
 ACoustical & AV CONSULTANTS

USD 259
NEW SOUTHEAST HIGH SCHOOL
BID NO. 15-25-1007
12TH ST. SIDE OF FARMER HIGHWAY APPROX. 12TH ST. EAST
WICHITA, KS 67210

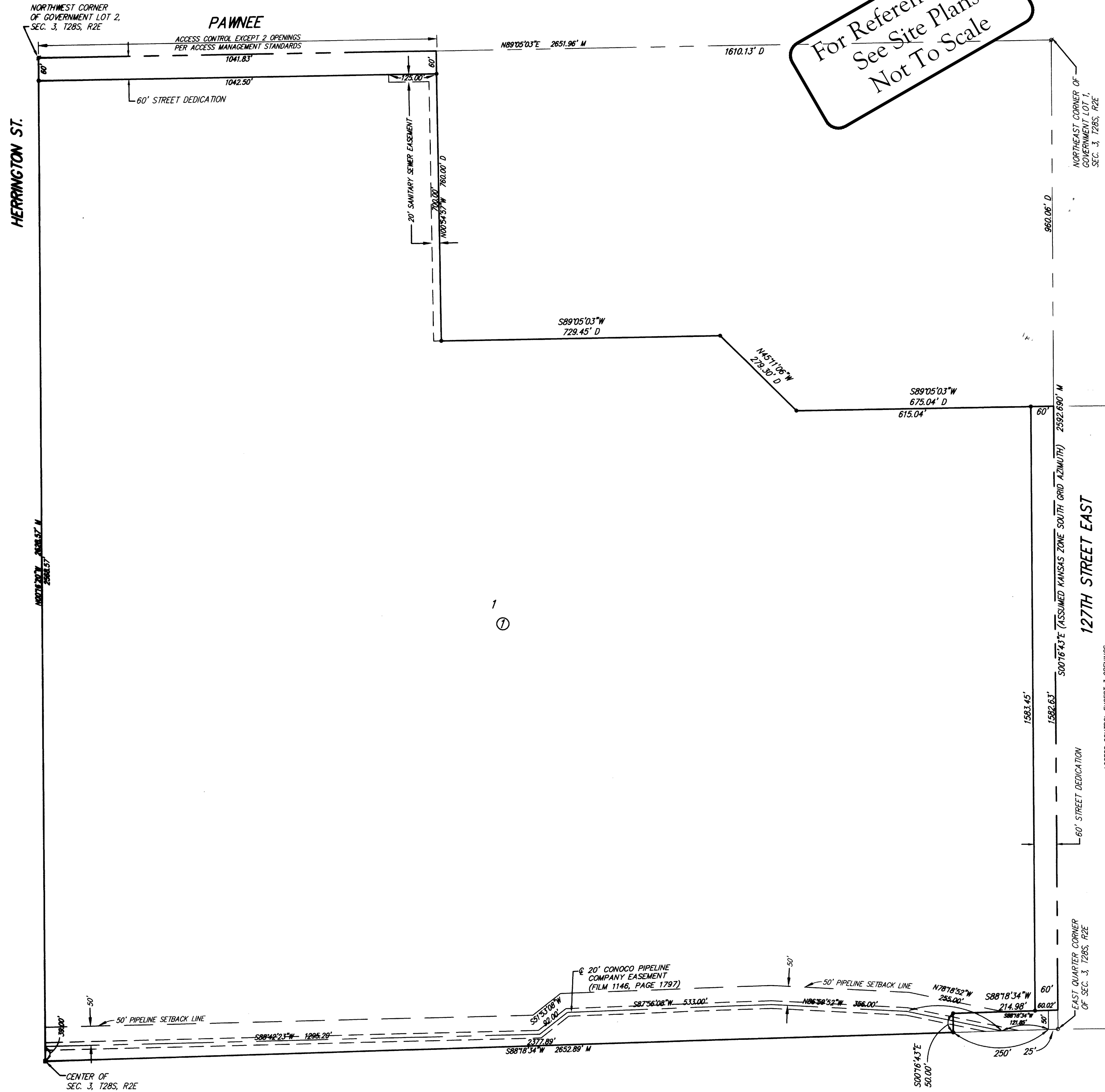
Revisions

Project Number: 5188-00
 FEBRUARY 2015
 FOOTBALL FIELD
 PERIMETER DRAINAGE
 1" = 30'-0"
C27.5R

USD 259 4TH ADDITION

Wichita, Sedgwick County, Kansas

For Reference Only
See Site Plans
Not To Scale



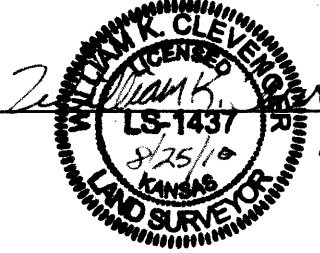
State of Kansas) SS
Sedgwick County)

We, Ruggles & Bohm, P.A., Land Surveyors in aforesaid county and state, do hereby certify that, under the supervision of the undersigned, we have surveyed and platted "USD 259 4TH ADDITION", Wichita, Sedgwick County, Kansas, and that the accompanying plat is a true and correct exhibit of the property surveyed, described as follows:

The NE1/4 of Sec. 3, T28S, R2E of the 6th P.M., Sedgwick County, Kansas, EXCEPT a tract of land lying in a portion of Government Lots 1 and 2, Section 3, Township 28 South, Range 2 East, of the 6th Principal Meridian, Wichita, Sedgwick County, Kansas; said tract being more particularly described as follows: BEGINNING at the northeast corner of said Northeast Quarter, thence along the east line of said Quarter on a Kansas coordinate system of 1983 south zone grid bearing of S00°16'43"E, 960.06 feet; thence parallel with and 960.00 feet south of the north line of said Quarter, S89°05'03"W, 675.04 feet; thence N45°1'06"W, 279.30 feet to a point lying 760.00 feet south of said north line; thence S89°05'03"W, 729.45 feet; thence N00°54'57"W, 760.00 feet to said north line; thence along said north line, N89°05'03"E, 1610.13 feet to the point of beginning, AND EXCEPT that described as beginning at the southeast corner of said NE1/4, thence S88°16'17"W, along the south line of said NE1/4, 275.00 feet; thence N00°52'40"W, parallel with the east line of said NE1/4, 50.00 feet; thence N88°16'17"E, parallel with said south line, 275.00 feet to the east line of said NE1/4; thence S00°52'40"E, along said east line, 50.00 feet to the point of beginning.

All public easements and dedications are hereby vacated by virtue of K.S.A. 12-512(b).

Ruggles & Bohm, P.A.



William K. Clevenger
Land Surveyor

Know all men by these presents that we, the undersigned, have caused the land described in the surveyor's certificate to be platted into a Lot, a Block and Streets, to be known as "USD 259 4TH ADDITION", Wichita, Sedgwick County, Kansas. Access Controls as indicated are hereby granted to the appropriate governing body. The streets are hereby dedicated to and for the use of the public. The Sanitary Sewer Easement is hereby granted to the public for the construction and maintenance of a sanitary sewer. A drainage plan has been developed for this plat and all drainage easements shall remain at established grades, or as modified with the approval of the City Engineer, and unobstructed to allow for the conveyance of storm water.

Unified School District 259



Connie Dietz
Connie Dietz, President

State of Kansas) SS
Sedgwick County)

The foregoing instrument acknowledged before me, this 27th day of August, 2010, by Connie Dietz, President, on behalf of the Board of Unified School District 259.

Mike Willome
Notary Public

My appointment expires 6/1/2011



Recorded: Sedgwick County, Kansas
Doc # / FLH-PG: 29186138
Date Recorded: 12/2/2010 10:30:52 AM

This plat of "USD 259 4TH ADDITION", Wichita, Sedgwick County, Kansas, has been submitted to and approved by the Wichita-Sedgwick County Metropolitan Area Planning Commission, Wichita, Kansas.

Dated this 3rd day of June, 2010.

Wichita-Sedgwick County Metropolitan Area Planning Commission



G. Nelson Van Fleet
Chair
John L. Schlegel
Secretary

This plat approved and all dedications shown hereon accepted by the City Council of the City of Wichita, Kansas, this 9th day of November, 2010.

At the Direction of the City Council
Mayor
Clerk
Karen Sublett

Reviewed in accordance with K.S.A. 58-2005 on this 2nd day of August, 2010.



Deputy County Surveyor
Sedgwick County Kansas
Teresa Robello, LS #1246

Entered on transfer record this 24th day of November, 2010.

Kelly B. Arnold

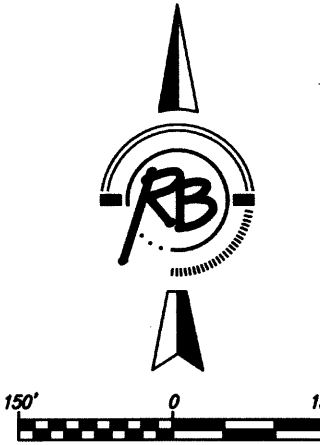


State of Kansas) SS
Sedgwick County)

This is to certify that this plat has been filed for record in the office of the Register of Deeds, this 2nd day of December, 2010, at 10:52 o'clock A.M., and is duly recorded.

Bill Meek
Deputy
Korya Buckingham

- M = Measured
- D = Described
- STONE W/PLUS
- 1/2" REBAR W/CAP (FOUND - ORIGIN UNKNOWN)
- 5/8" REBAR W/CAP (FOUND - ORIGIN UNKNOWN)
- 5/8" REBAR W/RUGGLES & BOHM CAP (SET)



BENCH MARK: CHISELED SQUARE ON THE TOP OF CURB AT THE SOUTH END OF THE ISLAND AT THE ENTRANCE OF CASA BELLA ADDITION, AT THE INTERSECTION OF TARA FALLS AND PANWEE. ELEVATION = 1354.46 (NAVD83)

Recorded: Sedgwick County, Kansas
Doc # / FLH-PG: 29186138
Date Recorded: 12/2/2010 10:30:52 AM

Ruggles & Bohm, P.A.
Engineering, Surveying, Land Planning
924 North Main (316) 264-8008
Wichita, Kansas 67203 (316) 264-4621 fax
www.rbkansas.com E-mail: info@rbkansas.com