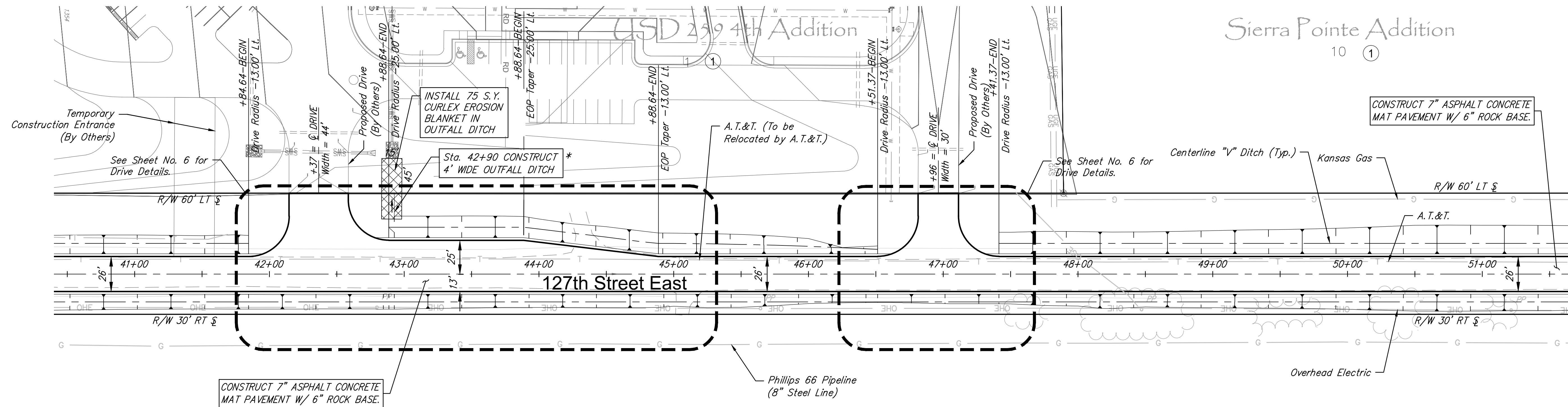


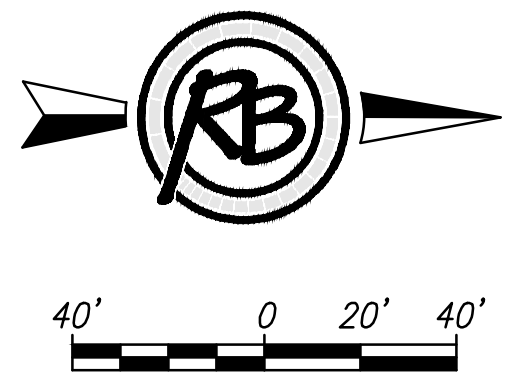
Sierra Pointe Addition

10 ①

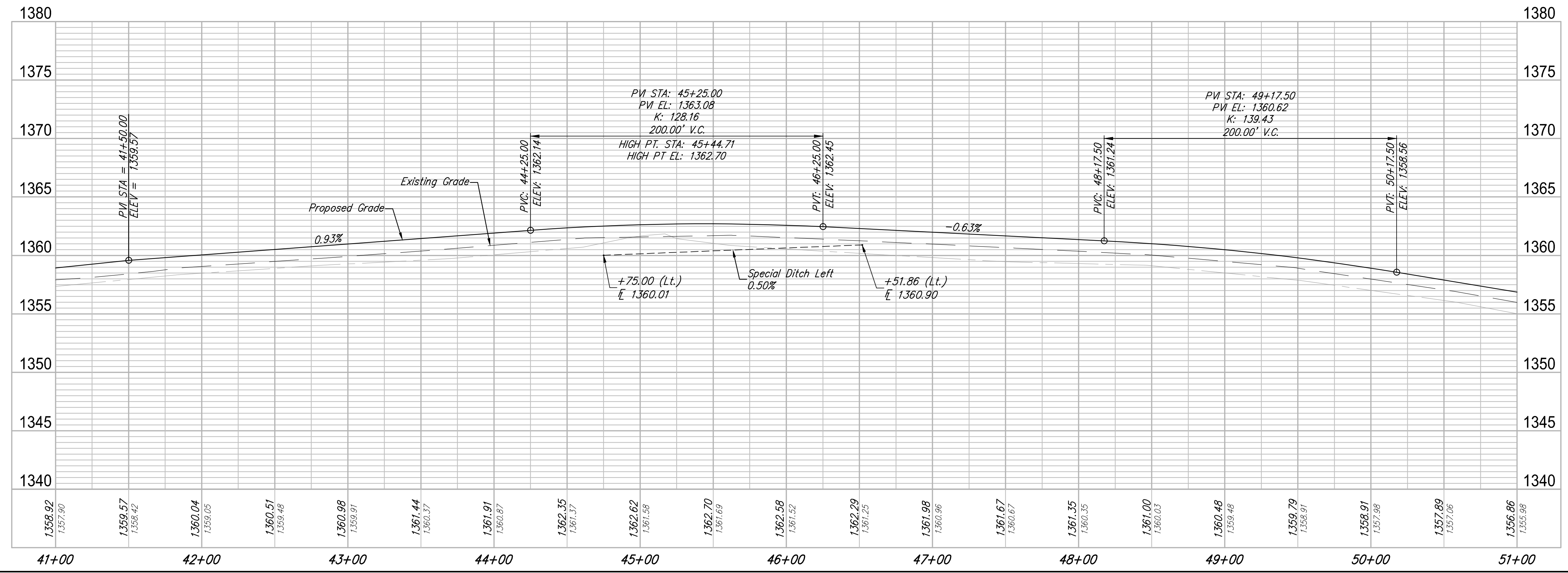


CONSTRUCT 7" ASPHALT CONCRETE MAT PAVEMENT W/ 6" ROCK BASE.

* Relocated A.T.&T. Cable is approximately 48" deep and 10' East of Property Line at the location of the proposed outfall ditch.



Unplatted



Ditch Notes:
Unless otherwise noted in profile, Construct new street ditches as shown and noted in the Typical Section and Cross Sections.

RUGGLES BOHM
ENGINEERS & ARCHITECTS

**127th Street East
127th-PP-2
Wichita, Kansas**

PROJECT NUMBER 472-84941	DESIGN KL	REVIEW 4-12-2016
DRAWING FILE 333T-Engineering Base 127th-PP-2	DRAWN DS	DATE
SHEET 4 OF 24		