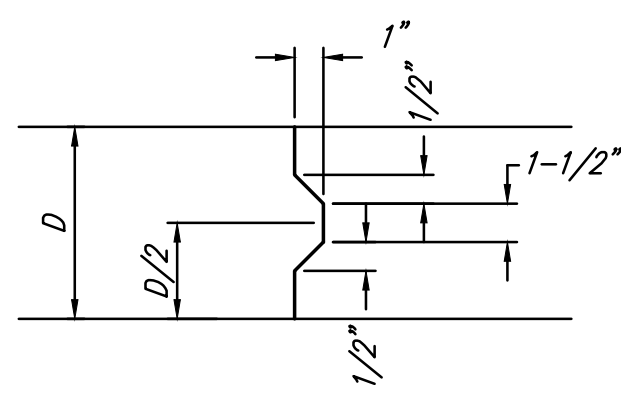
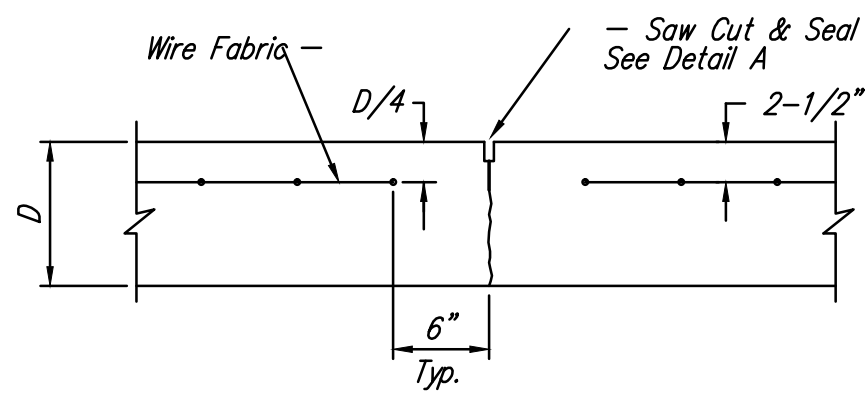


**EXPANSION JOINT (E.J.)**

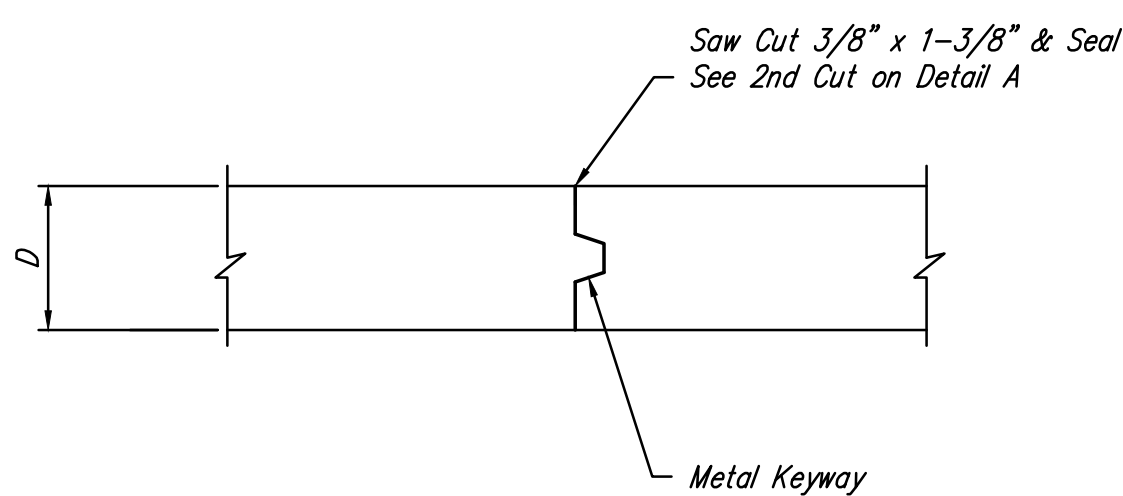
NOTE: Extra Thickness to be Subsidiary to Price of Square Yards Pavement



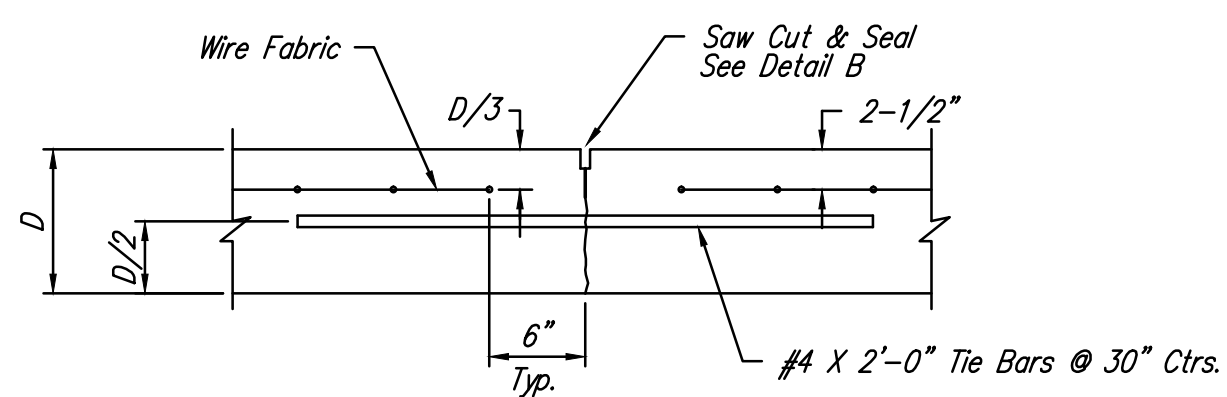
**KEYWAY DETAIL**



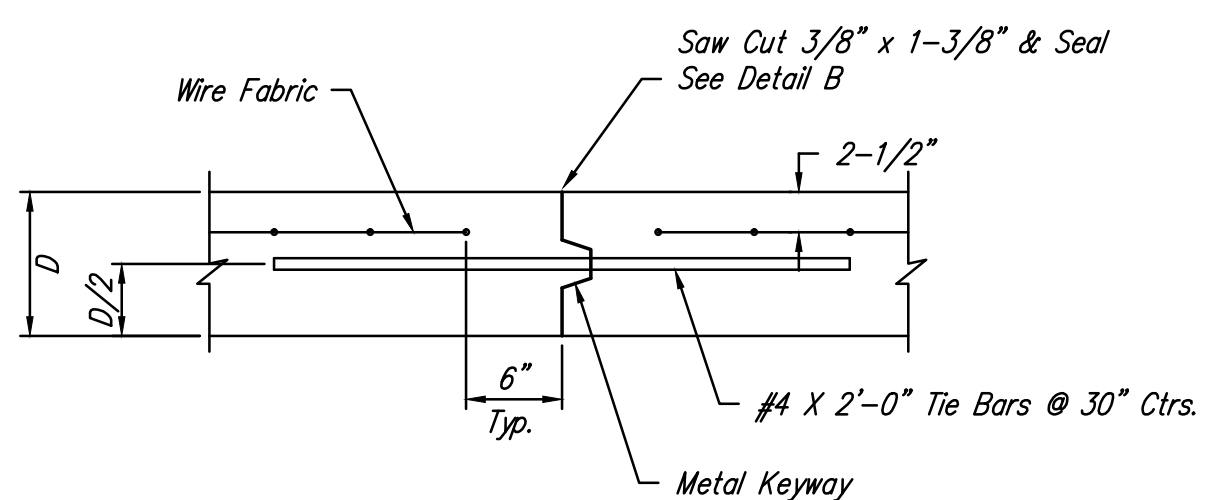
**CONTRACTION JOINT DETAIL (C.J.)**



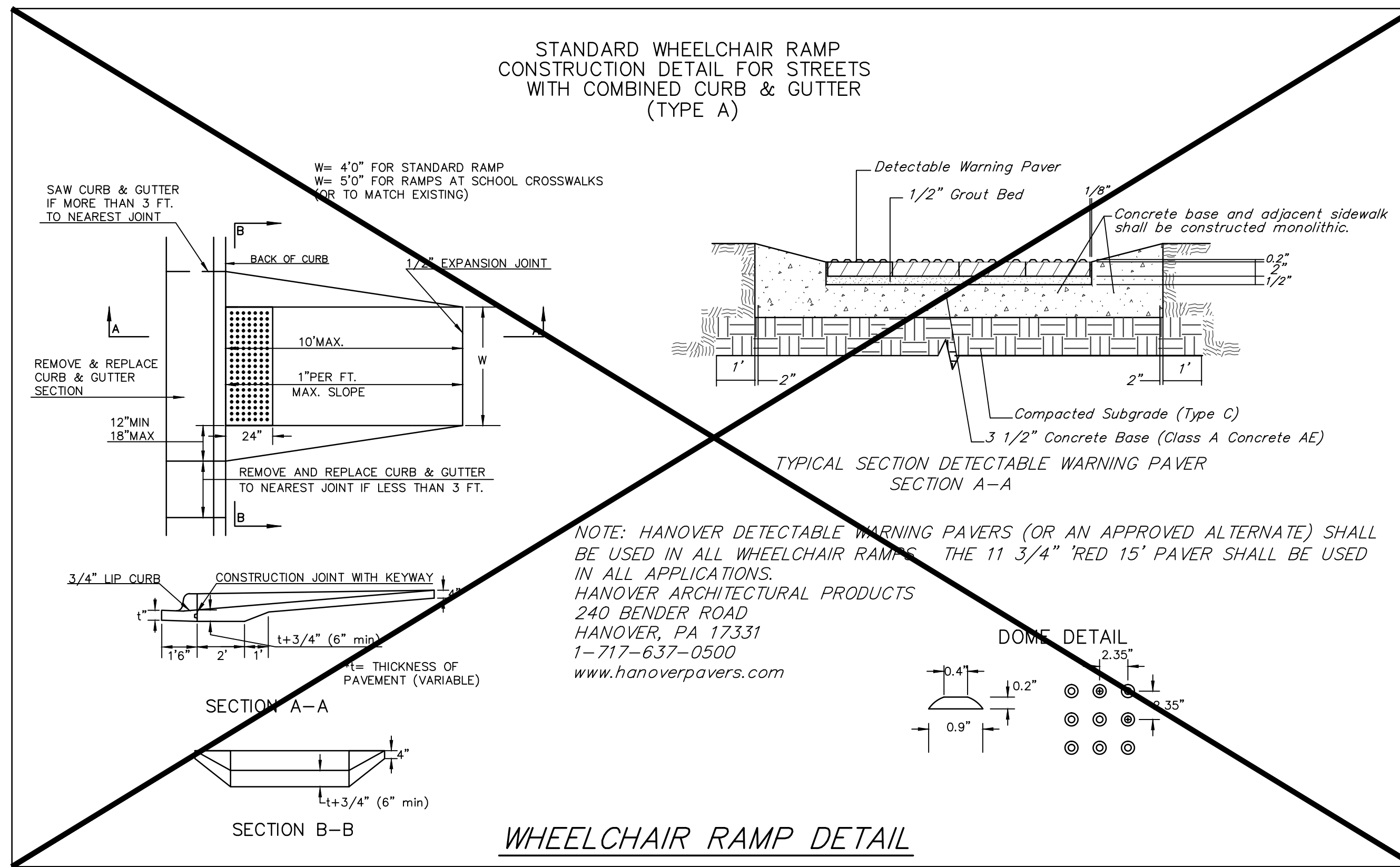
**LONGITUDINAL JOINT DETAIL (L.J.) "A"**



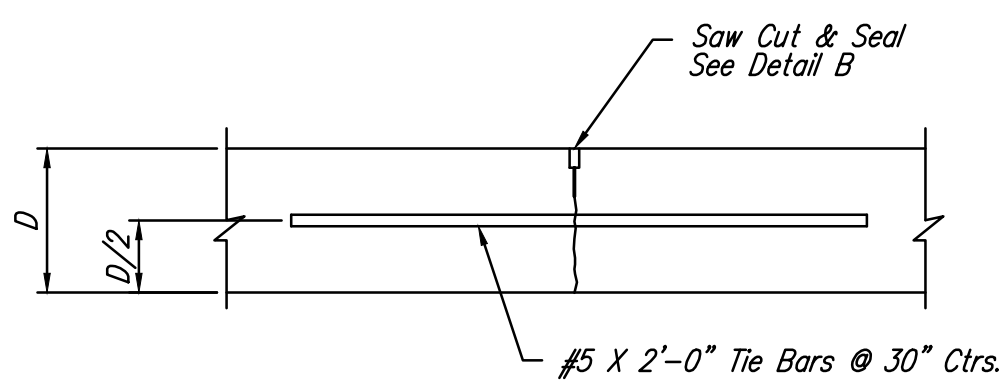
**LONGITUDINAL JOINT DETAIL (L.J.)**



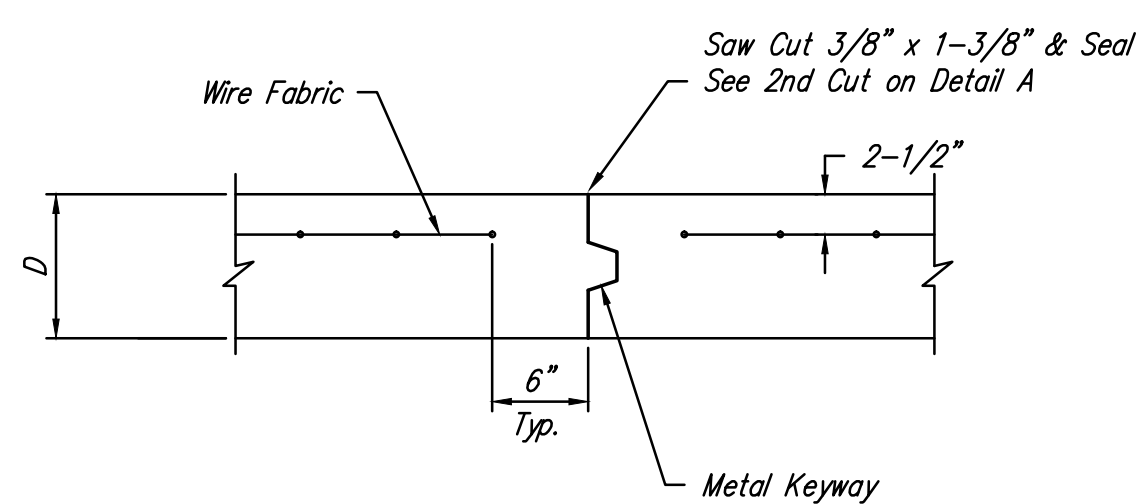
**OPTIONAL LONGITUDINAL JOINT DETAIL (L.J.) (CONSTRUCTION JOINT)**



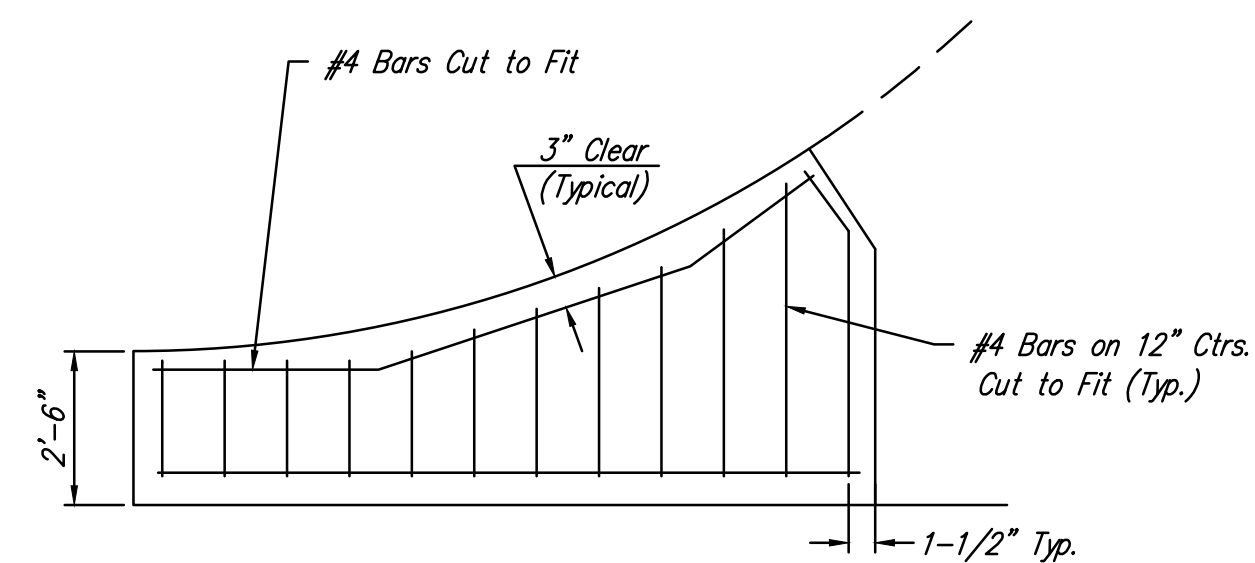
**WHEELCHAIR RAMP DETAIL**



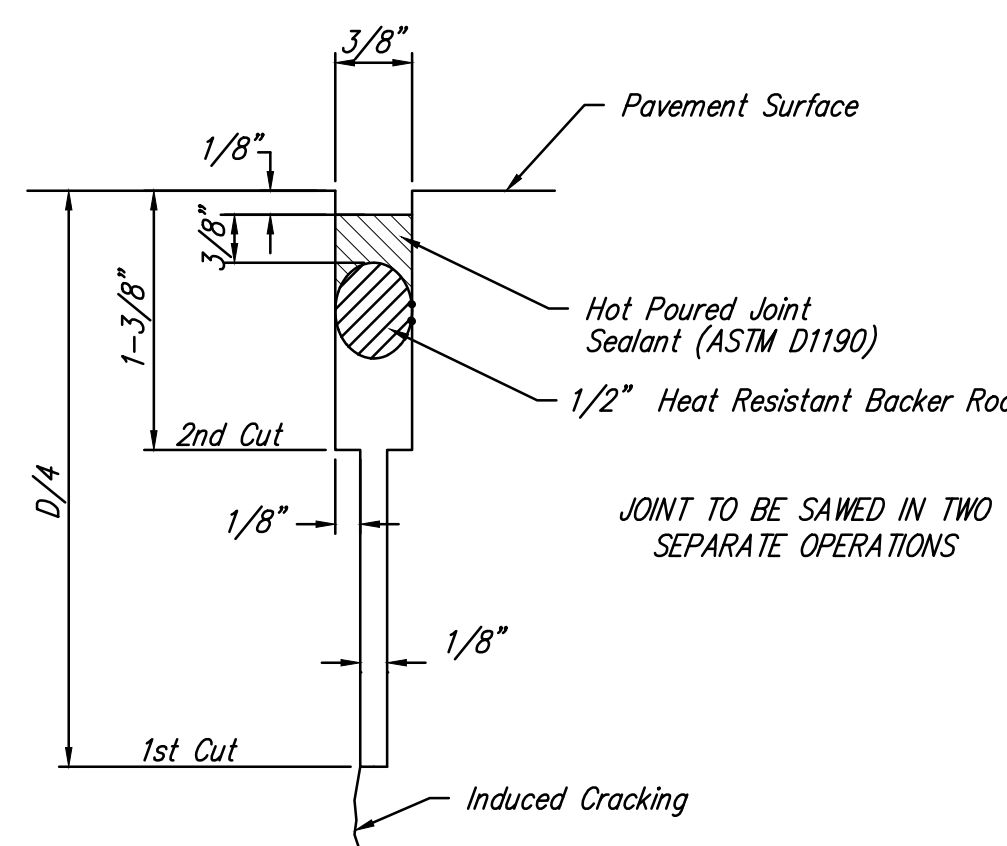
**LONGITUDINAL JOINT DETAIL (L.J.) "B"**



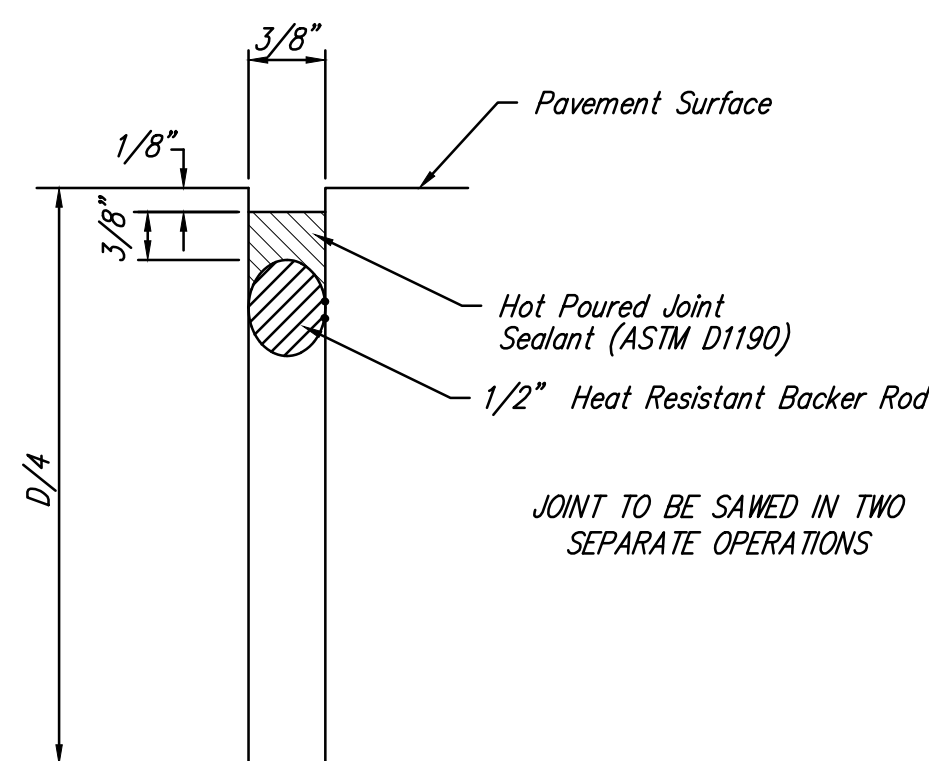
**OPTIONAL CONTRACTION JOINT (CONSTRUCTION JOINT)**



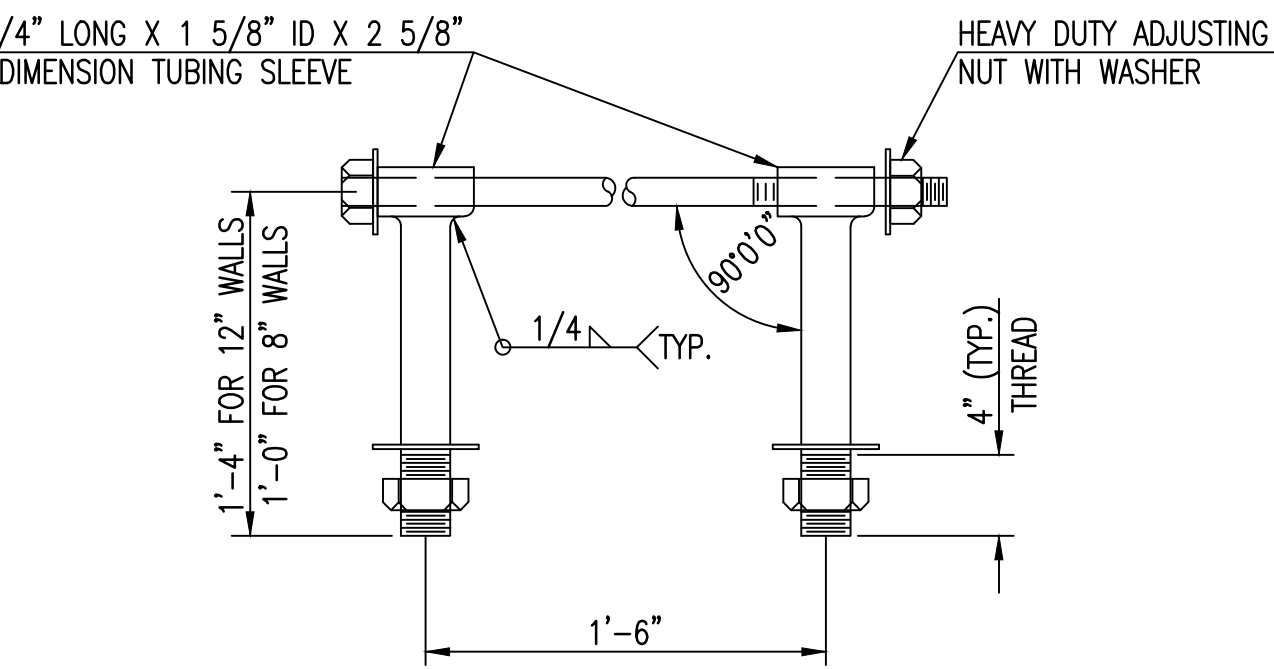
**WING REINFORCING DETAIL**



**SAW JOINT DETAIL "A"**



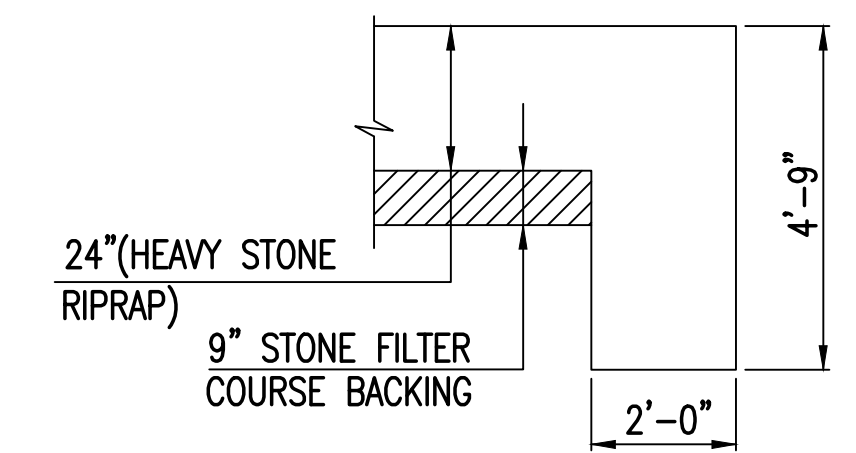
**SAW JOINT DETAIL "B"**



**HEAVY DUTY (H.D.) COUPLER**

NO SCALE

- NOTES
- BOLTS TO BE A-36 1 1/2" DIAMETER.
  - BOLTS, NUTS, WASHERS AND SLEEVES TO BE ZINC PLATED.
  - WASHERS TO BE 3 1/2" O.D. X 7 GAUGE.
  - SHIP WITH NUTS AND WASHERS PLACED ON BOLTS.



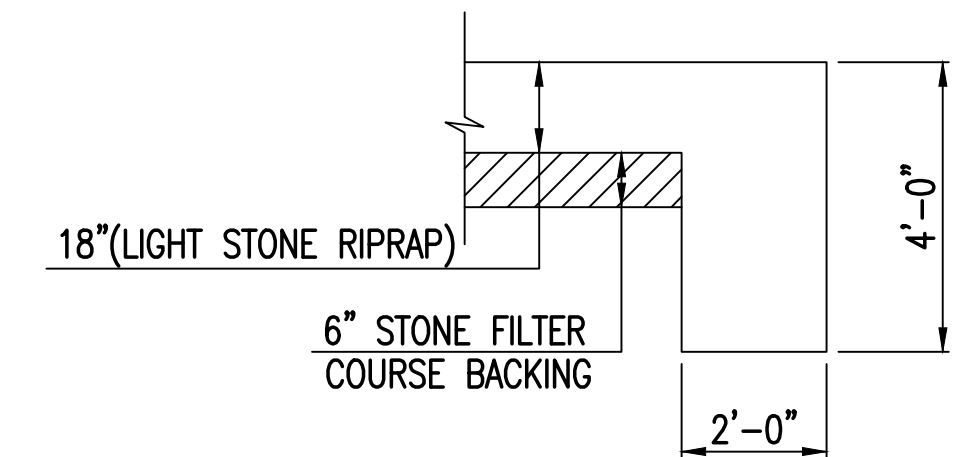
**TYPICAL SECTION THRU TOEWALL**

NO SCALE

NOTES

- ALL RIPRAP FOR THIS PROJECT SHALL BE NATURAL STONE. NEITHER BROKEN CONCRETE, FABRIC ENVELOPE, NOR PREMIXED DRY PACKAGED CONCRETE BAG ALTERNATES WILL BE ALLOWED, UNLESS INDICATED OTHERWISE.
- TOEWALLS SHALL BE INSTALLED ALONG ALL UNPROTECTED EDGES OF STONE RIPRAP.
- GROUTING OF THE SURFACE OF THE RIPRAP SHALL NOT BE PERFORMED, UNLESS INDICATED OTHERWISE. GROUTING OF THE TOEWALLS SHALL BE PERFORMED PER CITY SPECIFICATIONS.

**HEAVY STONE RIPRAP DETAILS**



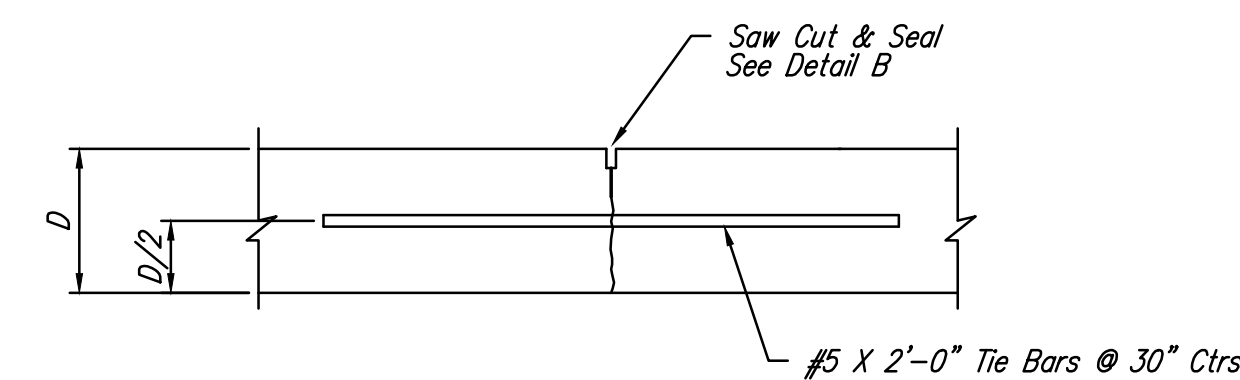
**TYPICAL SECTION THRU TOEWALL**

NO SCALE

NOTES

- ALL RIPRAP FOR THIS PROJECT SHALL BE NATURAL STONE. NEITHER BROKEN CONCRETE, FABRIC ENVELOPE, NOR PREMIXED DRY PACKAGED CONCRETE BAG ALTERNATES WILL BE ALLOWED, UNLESS INDICATED OTHERWISE.
- TOEWALLS SHALL BE INSTALLED ALONG ALL UNPROTECTED EDGES OF STONE RIPRAP.
- GROUTING OF THE SURFACE OF THE RIPRAP SHALL NOT BE PERFORMED, UNLESS INDICATED OTHERWISE. GROUTING OF THE TOEWALLS SHALL BE PERFORMED PER CITY SPECIFICATIONS.

**LIGHT STONE RIPRAP DETAILS**



**TRANSVERSE JOINT DETAIL (T.J.)**

NOTE: 6" X 12" W4XW4 wire Fabric reinforcing shall be placed so that the wires with the 6" spacing will run parallel with the longitudinal joints.

<b>B</b> Baughman		<b>MISCELLANEOUS DETAILS</b>	
Baughman Company, P.A. 315 Ellis St. Wichita, KS 67211 P 316-262-7271 F 316-262-0149 ENGINEERING   SURVEYING   PLANNING   LANDSCAPE ARCHITECTURE			
PROJECT NUMBER	DESIGN	DRAWN	
	NBW	JAK	
REVISIONS:	APPROVED	DATE	
		8/14	
	SCALE	SHEET	
	1" = 20'	5 OF 23	

E:\Projects\Sheridan Avenue\_1507-E217\Engineering\STREET DETAILS.dwg