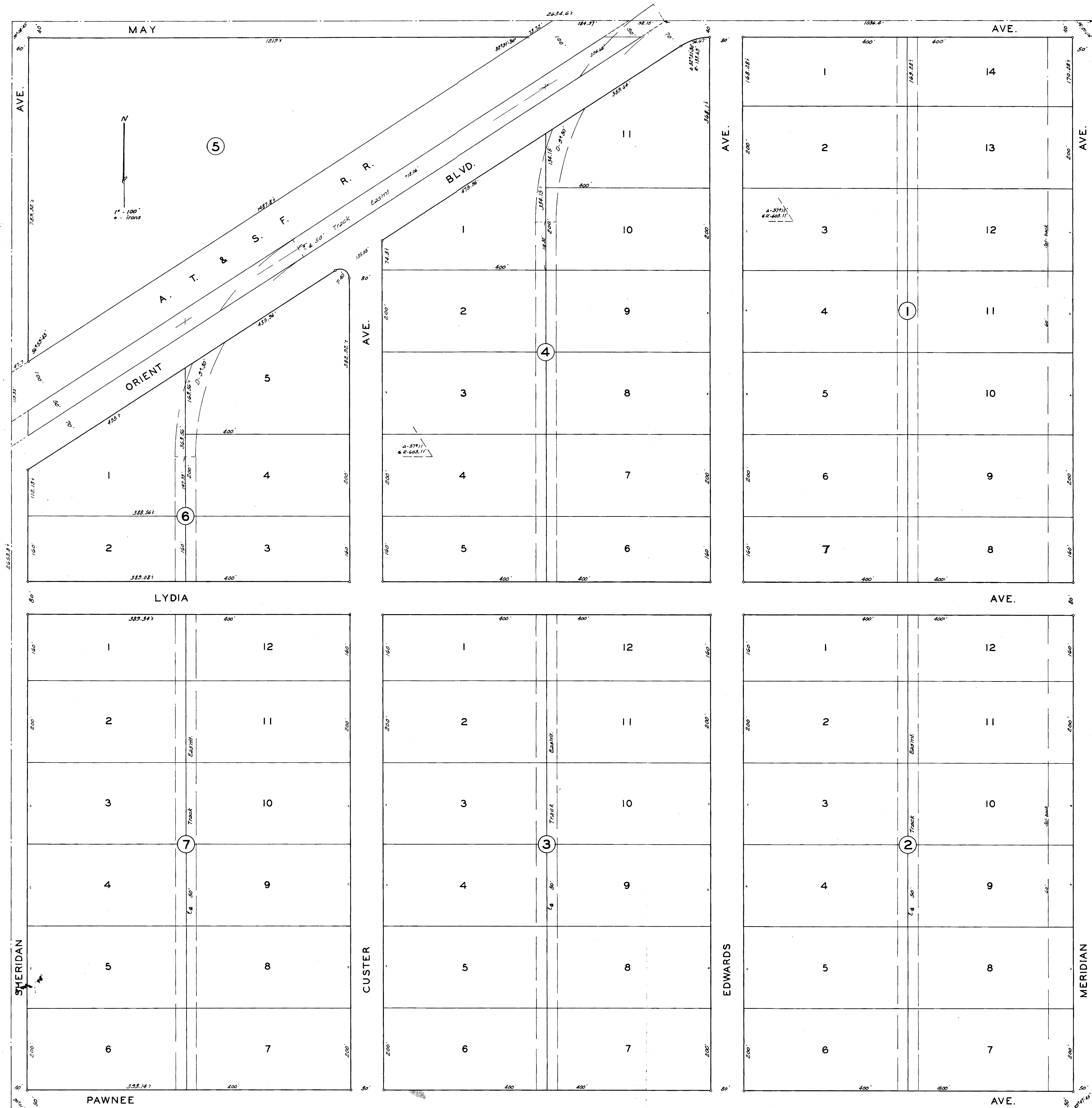


SOUTHWEST INDUSTRIAL ADDITION

TO WICHITA KANSAS

S2-5-13



State of Kansas } s.s. I, Clyde M. Baughman, Surveyor,
Sedgewick County } in aforesaid county and state do hereby certify that
I have surveyed and platted "SOUTHWEST
INDUSTRIAL ADDITION" to Wichita, Kansas and
that the accompanying plat is a true and correct
exhibit of the property surveyed described as
follows: The S.E. 1/4 of Sec. 36, Twp. 27-S,
R. 1-W. of the 6th P.M., except the right of way
of the A.T. & S.F. R.R.

Clyde M. Baughman Surveyor

Know all men by these presents
that I, Josephine Alexander have caused the
land described in the surveyors certificate to
be platted into lots, blocks, avenues and a bou-
levard to be known as "SOUTHWEST INDUSTRIAL
ADDITION" to Wichita, Kansas. Special easements
are hereby provided for the construction, main-
tenance and operation of railroad service to said sec-
tion. The avenues and boulevard are hereby dedicat-
ed to and for the use of the public.

Josephine Alexander

State of Kansas } s.s. Be it remembered that on
Sedgewick County } this 14 day of July, 1933, before me
a notary public in aforesaid county and state
came Josephine Alexander, to me known to be
the same person who executed the foregoing
instrument of writing and duly acknowledged the
execution of the same to be her voluntary act and
deed. In testimony whereof I have hereunto set my
hand and affixed my notarial seal the day and
year above written.

Walter B. ... Notary Public
My Commission Expires Dec. 24, 1937

This plat of "SOUTHWEST
INDUSTRIAL ADDITION" to Wichita, Kansas has been
submitted to and considered by the City Planning
Commission of Wichita, Kansas, and is hereby
transmitted to the Board of City Commissioners
with the recommendation that such plat be ap-
proved as proposed. Dated this 14 day of
July, 1933.
The City Planning Commission of Wichita, Kansas.

Ernest ... Chairman
J. Thomas ... Secretary

Approved by the Board of City
Commissioners this 14 day of July
1933.

Walt Keeler Mayor
Charles ... City Clerk

Approved by the Board of
County Commissioners this 5th day of
August, 1933.

Chris Schumeter County Clerk

Entered on transfer record this
8th day of August 1933.

Chris Schumeter County Clerk

State of Kansas } s.s. This is to certify that this
Sedgewick County } plat was filed for record in the office of the
Register of Deeds this 8th day of August
1933, at 8:45 o'clock, A.M., and is duly re-
corded.

C.S. ... Register of Deeds
Harry G. ... Deputy

20046
20046

SHEET
13 OF 13

Restrictions M-307-P-600
ROR-1A H 476 P 294