

BENCHMARKS:
BM #1
 Benchmark Disk adjacent to fire hydrant south end of south curb return SE corner of Custer Ave. & Lydia Ave.
 Elev. = 1292.48 NAVD 88

BM #2
 Cross in Square cut in top of curb, east side of Sheridan Ave., south end of south curb return of drive entrance to Lot 4, Block 7
 Elev. = 1291.48 NAVD 88

FIRE HYDRANTS REQUIRED					
LINE	STATION	BURY LINE ELEVATION	TOP OF PIPE ELEVATION	FIRE HYDRANT BURY REQUIRED*	VALVE STEM EXT. REQUIRED (ft)*
1	11+63.93	1292.00	1287.65	5'	-
1	14+18.08	1292.50	1288.15	5'	-
1A	0+53.00	1292.60	1288.25	5'	-

WL Sta. 0+53.00, End Line 1A
 BL Sta. 10+00.00, 28.00' Lt.
 1-Fire Hydrant Assembly (L = 5')
 2.00 L.F. D.I.C.L. Pipe w/ Plug (W)
 Bury Line Elev. = 1292.60
 Valve Box Elev. = 1292.70

UNPLATTED

CAUTION!
 Overhead Elec. Crossing

CAUTION!
 36" San. Sewer Crossing

CAUTION!
 8" San. Sewer Crossing

WL Sta. 11+63.93, Line 1
 BL Sta. 12+00.00, 25.00' Rt.
 1-Fire Hydrant Assembly (L = 5')
 Bury Line Elev. = 1292.00
 Valve Box Elev. = 1291.90

CAUTION!
 24" SWS Crossing

WL Sta. 12+60.23, Line 1
 BL Sta. 12+96.30, 25.00' Rt.
 1 - 8" CIMJ 45° Bend

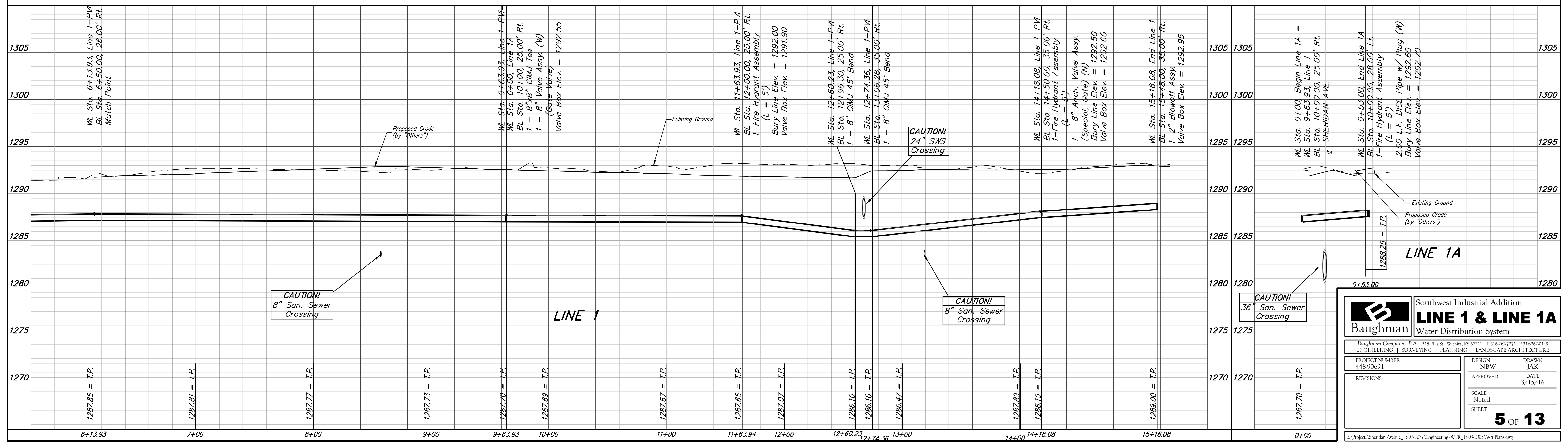
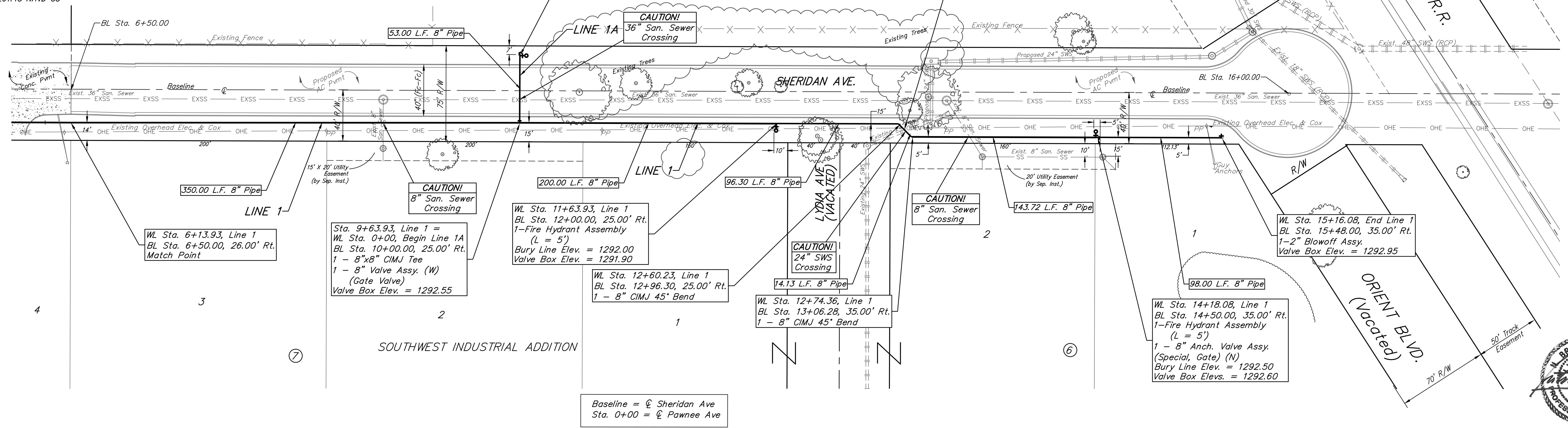
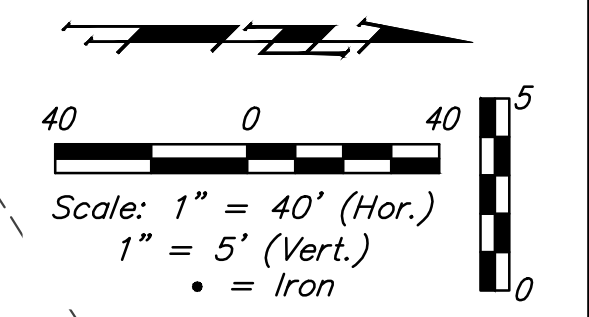
WL Sta. 12+74.36, Line 1
 BL Sta. 13+06.28, 35.00' Rt.
 1 - 8" CIMJ 45° Bend

CAUTION!
 8" San. Sewer Crossing

WL Sta. 15+16.08, End Line 1
 BL Sta. 15+48.00, 35.00' Rt.
 1-2" Blowoff Assy.
 Valve Box Elev. = 1292.95

WL Sta. 14+18.08, Line 1
 BL Sta. 14+50.00, 35.00' Rt.
 1-Fire Hydrant Assembly (L = 5')
 1 - 8" Anch. Valve Assy. (Special, Gate) (N)
 Bury Line Elev. = 1292.50
 Valve Box Elev. = 1292.60

Baseline = ϕ Sheridan Ave
 Sta. 0+00 = ϕ Pawnee Ave



Baughman Southwest Industrial Addition
LINE 1 & LINE 1A
 Water Distribution System

Baughman Company, P.A. 315 Ellis St. Wichita, KS 67211 P 316-262-7271 F 316-262-0149
 ENGINEERING | SURVEYING | PLANNING | LANDSCAPE ARCHITECTURE

PROJECT NUMBER: 448-90691
 REVISIONS:

DESIGN: NBW
 DRAWN: JAK
 APPROVED: DATE: 3/15/16
 SCALE: Noted
 SHEET: **5 OF 13**

E:\Projects\Sheridan Avenue (1507-E277)\Engineering\WTR_1509-E305\Wtr Plans.dwg