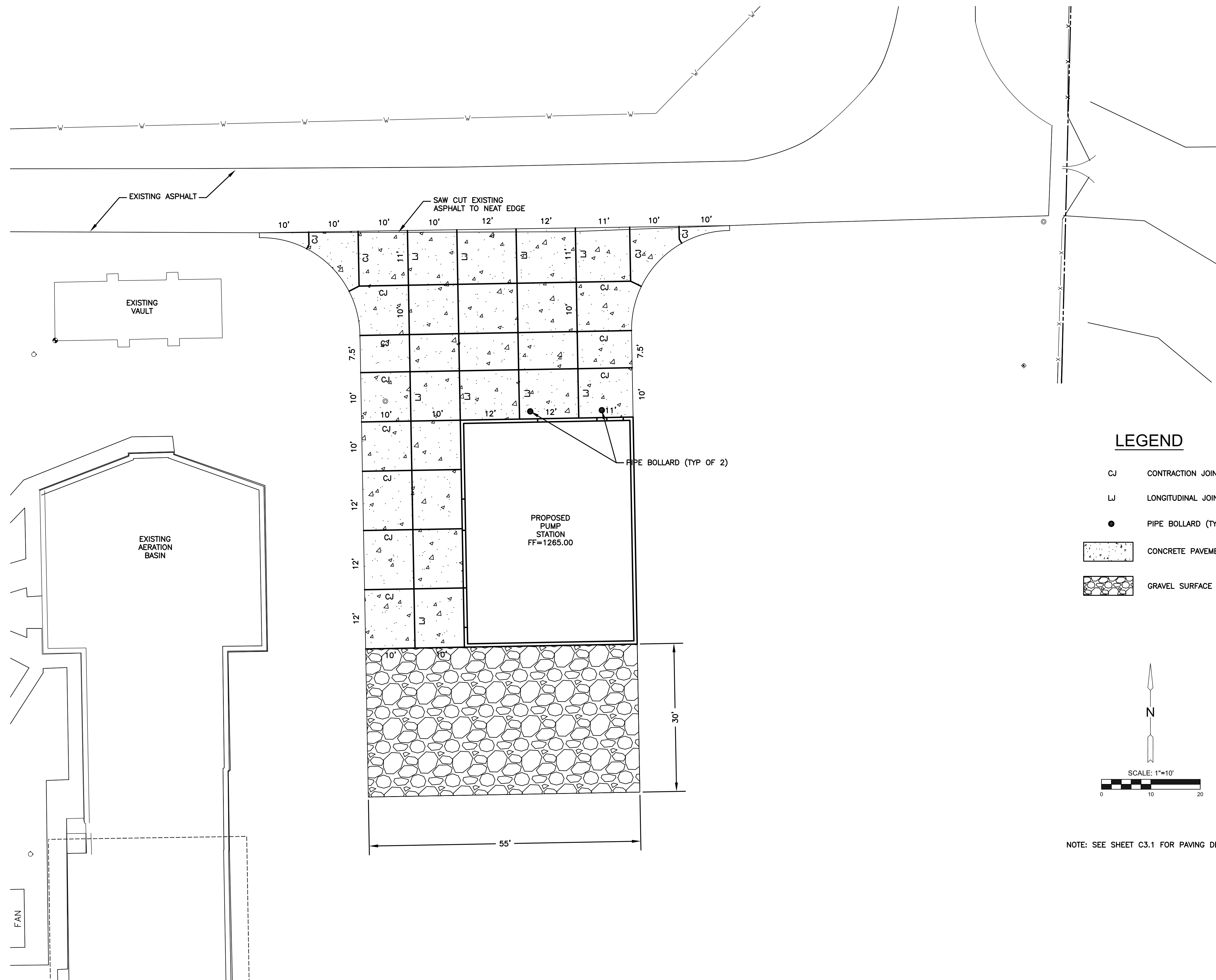
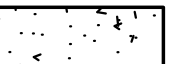



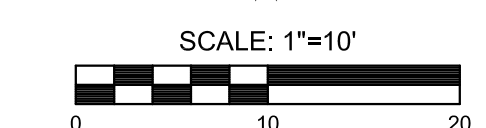
PLOTTED: Thursday, April 21, 2016 @ 04:10PM

J:\PROJECTS\2015\1510100623\_COWI\_REUSE\_WATER\_SUPPLY\_SYSTEM\_150623\_CAD\SHIT\505\_CIVIL\PAV\150623\_PAVING\_PLAN.DWG

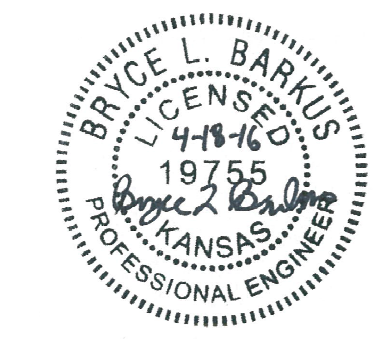


**LEGEND**

- CJ      CONTRACTION JOINT
- LJ      LONGITUDINAL JOINT
- PIPE BOLLARD (TYP. OF 2)
-       CONCRETE PAVEMENT
-       GRAVEL SURFACE



NOTE: SEE SHEET C3.1 FOR PAVING DETAILS.



CITY OF WICHITA, KANSAS  
**RE-USE WATER PUMP STATION**  
 TO SERVE SPIRIT AEROSYSTEMS

©2016  
 MKEC Engineering  
 All Rights Reserved  
 www.mkec.com  
 These drawings and their contents, including, but not limited to, all concepts, designs, & ideas are the exclusive property of MKEC Engineering (MKEC), and may not be used or reproduced in any way without the express consent of MKEC.

**PAVING PLAN**

PROJECT NO.	468-85112	
DATE	04/18/16	
SCALE	1"=10'	
DESIGNED	DRAWN	CHECKED
BLB	MCW	MAB

NO.	REVISION	DATE
0	ISSUED FOR CONSTRUCTION	04/18/16

SHEET NO.  
**C3.0**