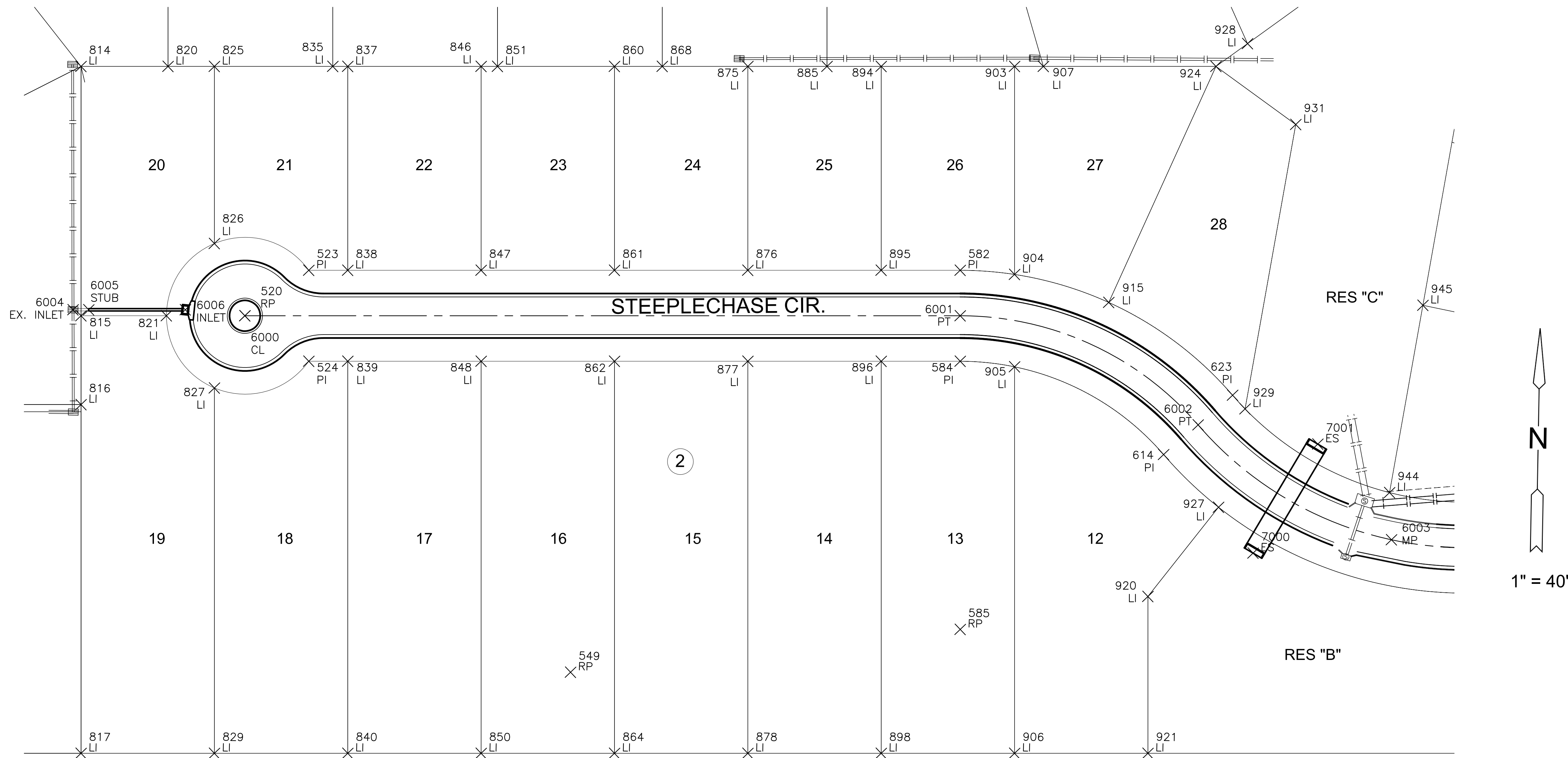


PAVING & INCIDENTAL DRAINAGE FOR
KRUG SOUTH ADDITION
PHASE 5



PLAT POINTS			
Point #	Northing	Easting	Desc.
520	1697571.21	1694997.01	RP
523	1697601.17	1695037.04	PI
524	1697543.19	1695038.42	PI
549	1697348.90	1695209.92	RP
582	1697611.03	1695452.12	PI
584	1697553.05	1695453.50	PI
585	1697382.09	1695457.56	RP
614	1697496.64	1695584.52	PI
623	1697535.50	1695627.58	PI
814	1697727.68	1694888.82	LI
815	1697568.73	1694892.60	LI
816	1697512.10	1694893.94	LI
817	1697289.81	1694899.22	LI
820	1697729.00	1694944.28	LI
821	1697570.02	1694947.03	LI

PLAT POINTS			
Point #	Northing	Easting	Desc.
825	1697729.70	1694973.80	LI
826	1697616.80	1694976.48	LI
827	1697524.70	1694978.67	LI
829	1697291.83	1694984.20	LI
835	1697731.50	1695049.25	LI
837	1697731.72	1695058.78	LI
838	1697601.76	1695061.86	LI
839	1697543.78	1695063.24	LI
840	1697293.85	1695069.18	LI
846	1697733.74	1695143.75	LI
847	1697603.78	1695146.84	LI
848	1697545.79	1695148.22	LI
850	1697295.86	1695154.15	LI
851	1697733.99	1695154.22	LI
860	1697735.76	1695228.73	LI

PLAT POINTS			
Point #	Northing	Easting	Desc.
861	1697605.80	1695231.81	LI
862	1697547.81	1695233.19	LI
864	1697297.88	1695239.13	LI
868	1697736.48	1695259.19	LI
875	1697737.78	1695313.70	LI
876	1697607.82	1695316.79	LI
877	1697549.83	1695318.17	LI
878	1697299.90	1695324.10	LI
885	1697738.98	1695364.16	LI
894	1697739.80	1695398.68	LI
895	1697609.83	1695401.77	LI
896	1697551.85	1695403.14	LI
898	1697301.92	1695409.08	LI
903	1697741.82	1695483.66	LI
904	1697609.22	1695486.80	LI

PLAT POINTS			
Point #	Northing	Easting	Desc.
905	1697550.32	1695488.20	LI
906	1697303.94	1695494.06	LI
907	1697742.25	1695502.04	LI
915	1697592.79	1695547.27	LI
920	1697405.93	1695576.66	LI
921	1697305.96	1695579.03	LI
924	1697744.86	1695612.01	LI
927	1697463.89	1695620.31	LI
928	1697759.87	1695631.79	LI
929	1697526.99	1695635.74	LI
931	1697709.04	1695663.72	LI
944	1697475.81	1695729.05	LI
945	1697595.70	1695747.48	LI

PAVING POINTS			
Point #	Northing	Easting	Desc.
6000	1697571.21	1694997.01	CL
6001	1697582.04	1695452.81	PT
6002	1697516.07	1695606.05	PT
6003	1697445.77	1695730.99	MP
6004	1697572.42	1694887.42	EX. INLET
6005	1697572.66	1694897.42	STUB
6006	1697574.12	1694958.99	INLET

STORM WATER SEWER POINTS			
Point #	Northing	Easting	Desc.
7000	1697435.18	1695643.01	ES
7001	1697505.66	1695682.59	ES



EVERY ATTEMPT HAS BEEN MADE TO INSURE ALL COORDINATE VALUES SHOWN ARE AN ACCURATE AND TRUE REPRESENTATION OF THE CURRENT PLANS. ALL VALUES ARE TO BE CONFIRMED WITH THE FINAL SIGNED PLAN SET BEFORE USE.

©2016 MKEC Engineering All Rights Reserved www.mkec.com
These drawings and their contents, including, but not limited to, all concepts, designs, & ideas are the exclusive property of MKEC Engineering (MKEC), and may not be used or reproduced in any way without the express consent of MKEC.

BUBBLE MAP

PROJECT NO.	472-85058	
DATE	APRIL 2016	
SCALE	1"=40'	
DESIGNED	DRAWN	CHECKED
DFL	BKS	GJA
NO.	REVISION	DATE

SHEET NO.