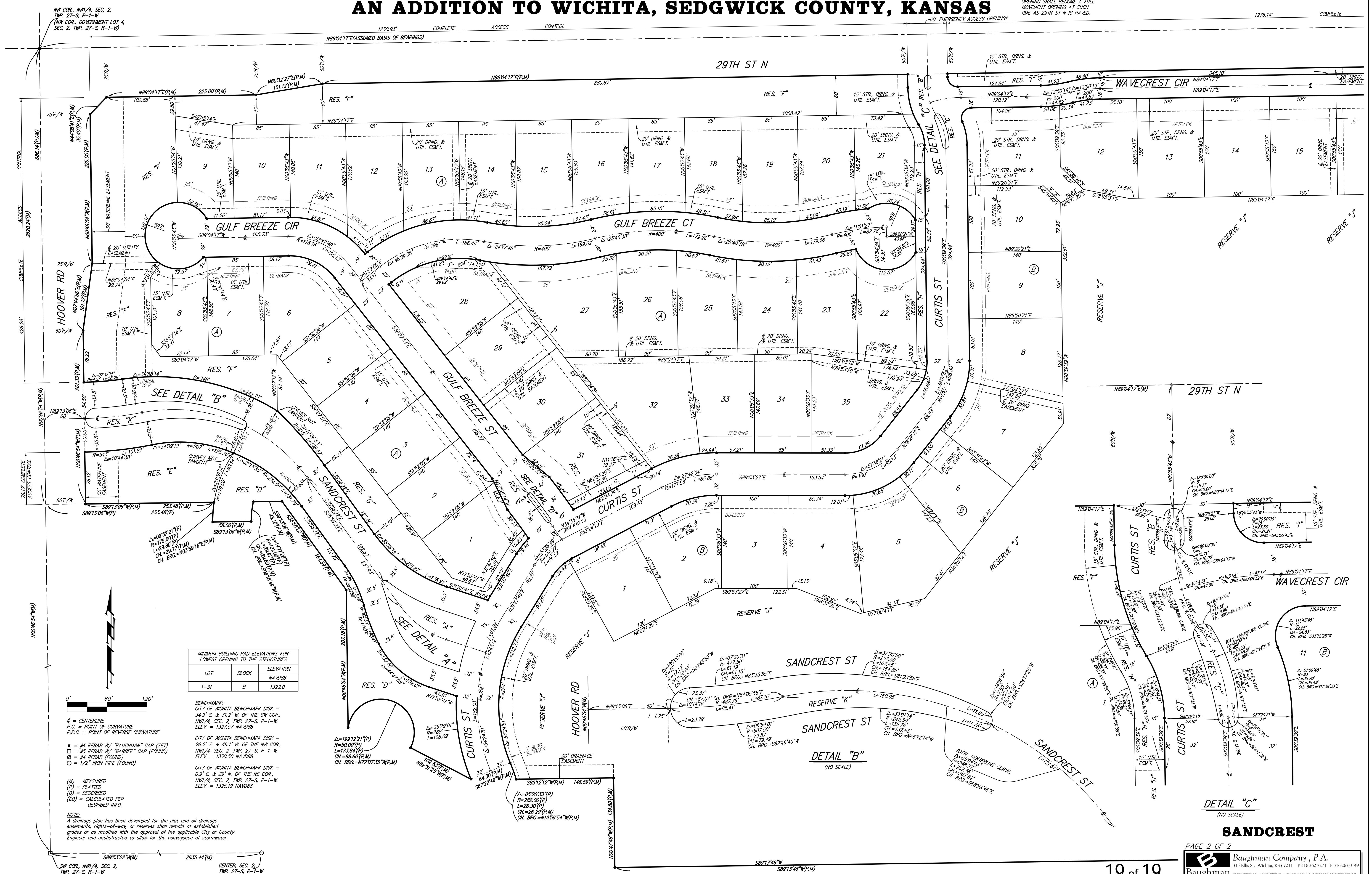


# SANDCREST

## AN ADDITION TO WICHITA, SEDGWICK COUNTY, KANSAS

\* NOTE:  
THE EMERGENCY ACCESS  
OPENING SHALL BECOME A FULL  
MOVEMENT OPENING AT SUCH  
TIME AS 29TH ST N IS PAVED.

1276.14' COMPLETE



MINIMUM BUILDING PAD ELEVATIONS FOR LOWEST OPENING TO THE STRUCTURES

| LOT  | BLOCK | ELEVATION |
|------|-------|-----------|
| 1-31 | B     | 1322.0    |

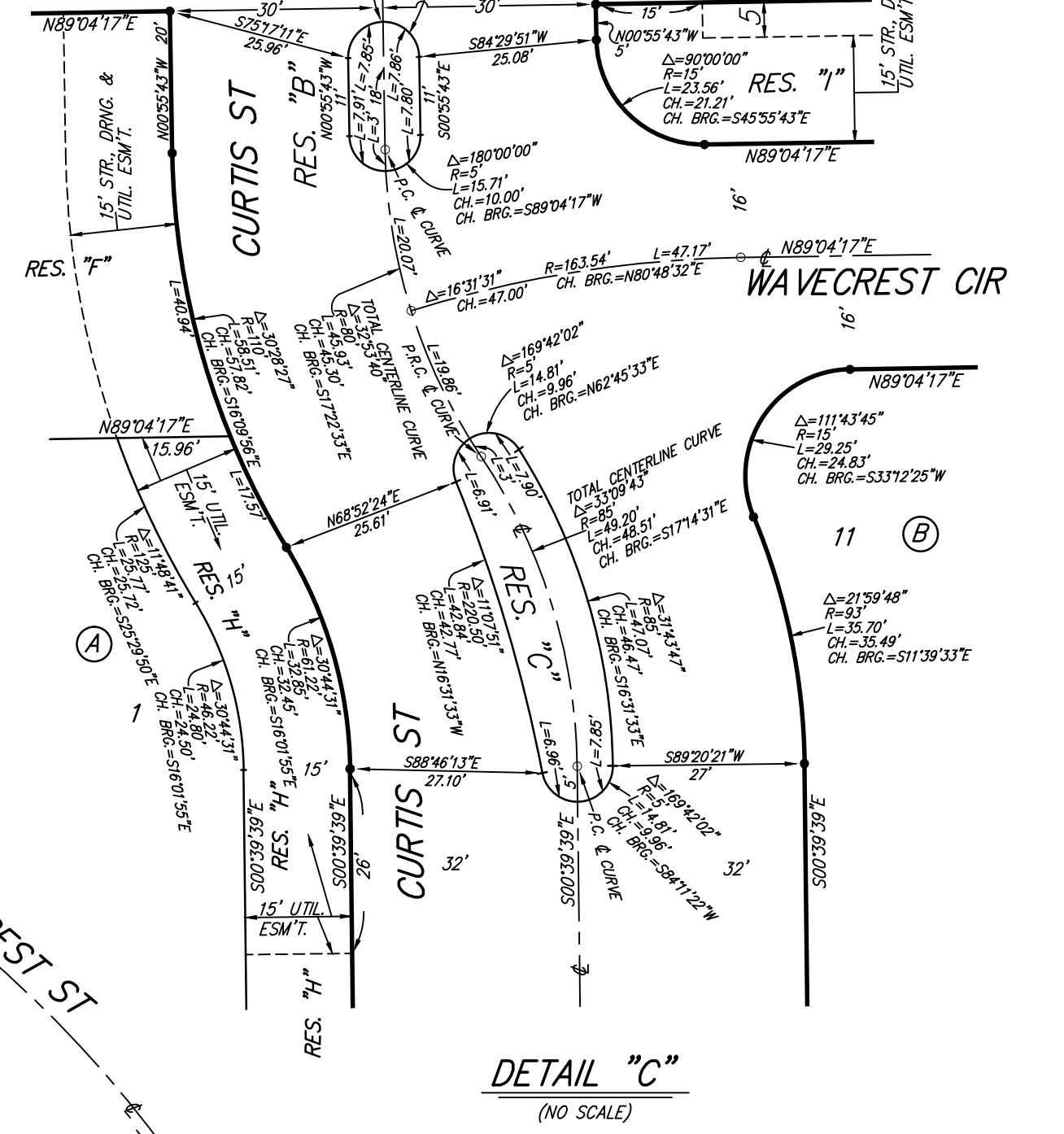
BENCHMARK:  
CITY OF WICHITA BENCHMARK DISK -  
34.9' S. & 31.2' W. OF THE SW COR.,  
NW 1/4, SEC. 2, TWP. 27-S, R-1-W  
ELEV. = 1327.57 NAVD88

CITY OF WICHITA BENCHMARK DISK -  
26.2' S. & 45.1' W. OF THE NW COR.,  
NW 1/4, SEC. 2, TWP. 27-S, R-1-W  
ELEV. = 1330.50 NAVD88

CITY OF WICHITA BENCHMARK DISK -  
0.9' E. & 29' N. OF THE NE COR.,  
NW 1/4, SEC. 2, TWP. 27-S, R-1-W  
ELEV. = 1325.19 NAVD88

- CL = CENTERLINE
- P.C. = POINT OF CURVATURE
- P.R.C. = POINT OF REVERSE CURVATURE
- = #4 REBAR W/ "BAUGHMAN" CAP (SET)
- = #5 REBAR W/ "GARBER" CAP (FOUND)
- = #4 REBAR (FOUND)
- = 1/2" IRON PIPE (FOUND)
- (M) = MEASURED
- (P) = PLATTED
- (D) = DESCRIBED
- (CD) = CALCULATED PER DESCRIBED INFO.

NOTE:  
A drainage plan has been developed for the plat and all drainage easements, rights-of-way, or reserves shall remain at established grades or as modified with the approval of the applicable City or County Engineer and unobstructed to allow for the conveyance of stormwater.



### SANDCREST

PAGE 2 OF 2  
Baughman Company, P.A.  
315 Ellis St. Wichita, KS 67211 P 316-262-1271 F 316-262-0149