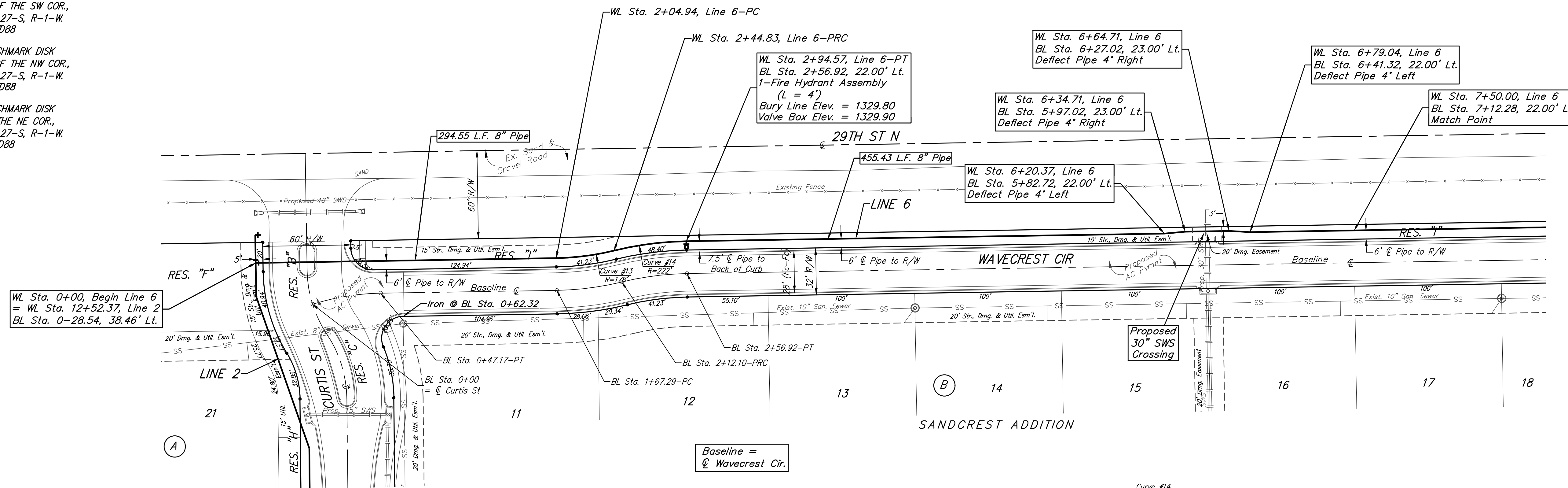
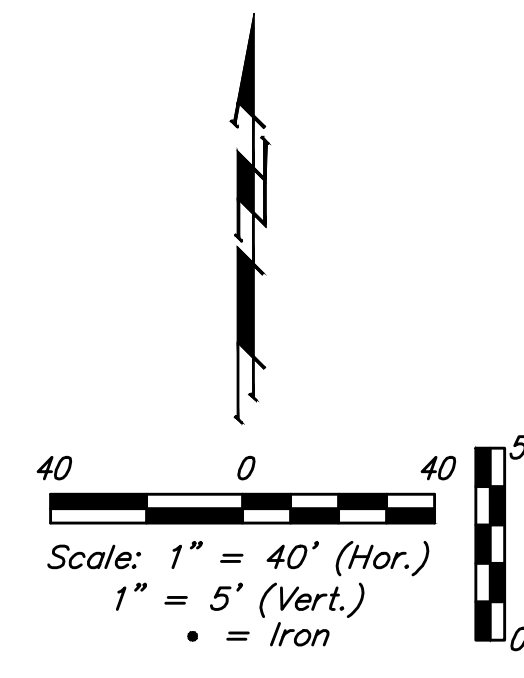


BENCHMARKS:
 CITY OF WICHITA BENCHMARK DISK
 34.9' S. & 31.2' W. OF THE SW COR.,
 NW1/4, SEC. 2, TWP. 27-S, R-1-W.
 ELEV. = 1327.57 NAVD88

CITY OF WICHITA BENCHMARK DISK
 26.2' S. & 46.1' W. OF THE NW COR.,
 NW1/4, SEC. 2, TWP. 27-S, R-1-W.
 ELEV. = 1330.50 NAVD88

CITY OF WICHITA BENCHMARK DISK
 0.9' E. & 29' N. OF THE NE COR.,
 NW1/4, SEC. 2, TWP. 27-S, R-1-W.
 ELEV. = 1325.19 NAVD88



Baseline =
 @ Wavecrest Cir.

Curve #13
 Curve Data Based on Centerline of Pipe
 Rad. = 178' Delta = 125°19' Tangent = 20.03'
 Arc = 39.89' L.C. = 39.80' Def./Ft. = 9.65551 Min.

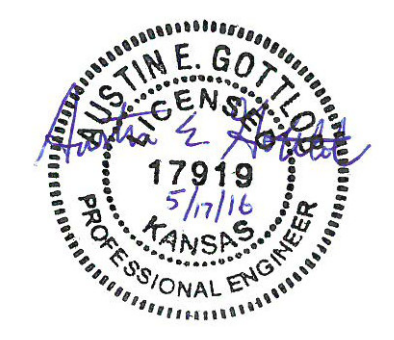
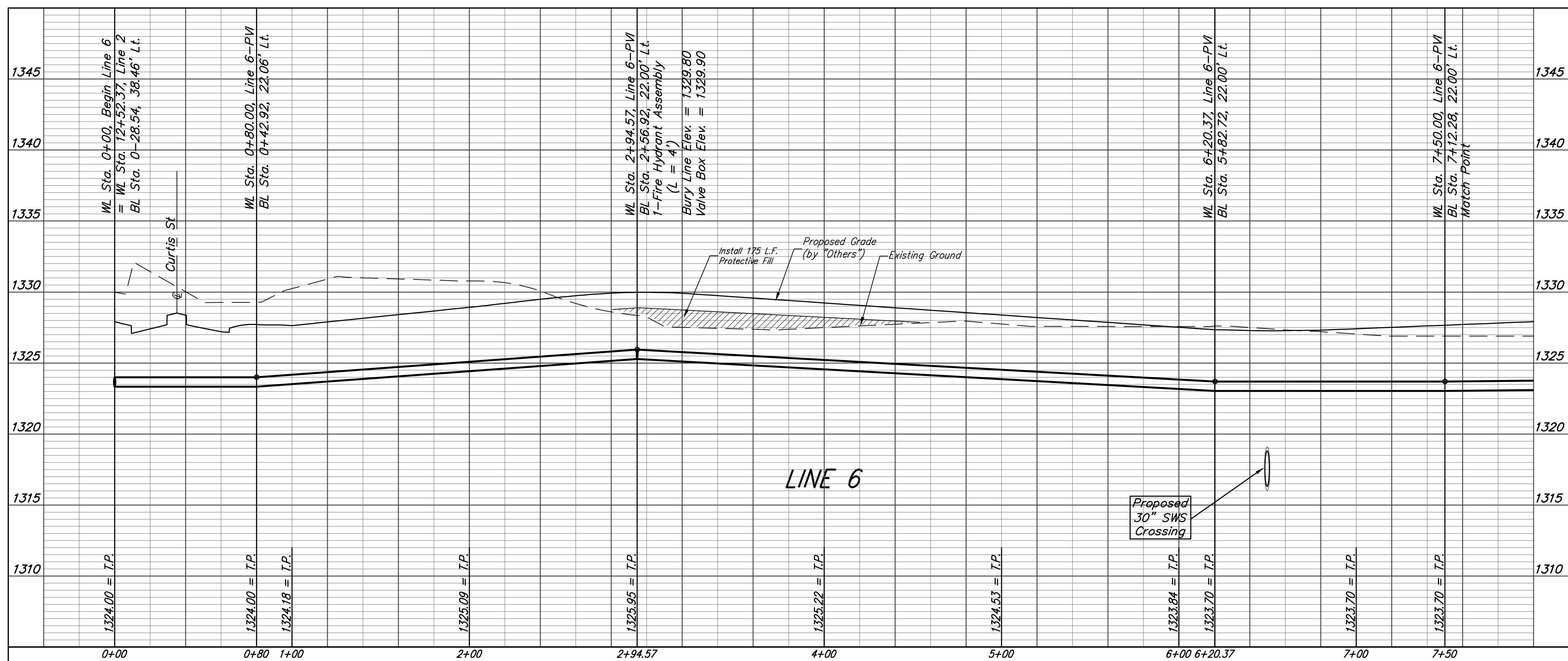
Station	Arc	Chord 8' Left	Defl.	Total Defl.
2+04.94	-	-	0°00'00"	0°00'00"
2+25.00	20.06'	19.15'	3°13'41"	3°13'41"
2+44.83	19.83'	18.93'	3°11'29"	6°25'10"

Curve #14
 Curve Data Based on Centerline of Pipe
 Rad. = 222' Delta = 125°19' Tangent = 24.98'
 Arc = 49.74' L.C. = 49.64' Def./Ft. = 7.74343 Min.

Station	Arc	Chord 8' Left	Defl.	Total Defl.
2+44.83	-	-	0°00'00"	0°00'00"
2+50.00	5.17'	5.36'	0°40'02"	0°40'02"
2+75.00	25.00'	25.89'	3°13'35"	3°53'37"
2+94.57	19.57'	20.27'	2°31'33"	6°25'10"

FIRE HYDRANTS REQUIRED

STATION	BURY LINE ELEVATION	TOP OF PIPE ELEVATION	FIRE HYDRANT BURY REQUIRED*	VALVE STEM EXT. REQUIRED (ft)*
2+94.57	1329.80	1325.95	4.5'	-



Baughman Sandcrest Addition - Phase I
LINE 6
 Water Distribution System

Baughman Company, P.A. 315 Ellis St. Wichita, KS 67211 P 316-262-7271 F 316-262-0149
 ENGINEERING | SURVEYING | PLANNING | LANDSCAPE ARCHITECTURE

PROJECT NUMBER: 448-90702
 DESIGN: AEG
 DRAWN: JAK
 APPROVED: [Signature]
 DATE: 5/17/16

REVISIONS:

SCALE: Noted
 SHEET: **9 OF 19**

E:\Projects\Pearl Beach_1202\F860\Engineering\Phase I\Wtr_1510E317\WTR PLANS.dwg