

GENERAL NOTES

- THE CONTRACTOR SHALL COMPLY WITH ALL APPLICABLE SAFETY REGULATIONS. ALL CONSTRUCTION SHALL BE COMPLETED FOLLOWING CURRENT CITY STANDARD SPECIFICATIONS AND SPECIAL PROVISIONS.
- CONTRACTOR WILL BE REQUIRED TO PROVIDE NOTICE TO UTILITY COMPANIES A MINIMUM OF SEVENTY-TWO (72) HOURS PRIOR TO ANY EXCAVATION, AS FOLLOWS:
KANSAS ONE-CALL 687-2470
THE CONTRACTOR MUST NOTIFY THE FOLLOWING IN CASE OF AN EMERGENCY:
AT&T 1-800-246-8464
BLACK HILLS ENERGY 1-800-694-8989
CITY OF WICHITA WATER 1-316-268-4555
CITY OF WICHITA SEWER 1-316-268-4073
CITY OF WICHITA STORMWATER 1-316-268-4090
CITY OF WICHITA TRAFFIC 1-316-268-4034
COX COMMUNICATIONS 1-888-249-3530
KANSAS GAS SERVICE 1-888-482-4960
WESTAR ENERGY 1-800-544-4857
WAA 1-316-946-4740
- UTILITY SERVICE LINES, POLES, ETC. ARE TO BE ADJUSTED AS NECESSARY BY OTHERS PRIOR TO CONSTRUCTION UNLESS THE PLANS SPECIFICALLY CALL FOR THEIR ADJUSTMENT BY THE CONTRACTOR OR UNLESS THE PLANS SPECIFICALLY IDENTIFY A UTILITY TO BE ADJUSTED BY ITS OWNER DURING CONSTRUCTION. EXISTING UTILITIES AND THEIR LOCATION, AS SHOWN ON THE PLANS, REPRESENT THE BEST INFORMATION OBTAINABLE FOR DESIGN. THE CONTRACTOR WILL BE REQUIRED TO WORK AROUND EXISTING UTILITIES WITHIN THE RIGHT-OF-WAY WHICH DO NOT CONFLICT WITH PROPOSED CONSTRUCTION.
- RUBBLE FROM THE REMOVAL OF MISCELLANEOUS STRUCTURES AND EXCESS EXCAVATION WHICH IS TO BE WASTED SHALL BE DISPOSED OF ON SITES TO BE PROVIDED BY THE CONTRACTOR. THESE SITES SHALL BE APPROVED BY THE ENGINEER AS TO SUITABILITY, APPEARANCE AND SITE LOCATION. LOCATIONS, IN THE OPINION OF THE ENGINEER, THAT WILL LEAVE AN UNSIGHTLY APPEARANCE WILL NOT BE APPROVED. ALL DISPOSAL SITES MUST BE APPROVED BY THE KANSAS DEPARTMENT OF HEALTH AND ENVIRONMENT. MATERIAL EITHER STOCKPILED OR DISPOSED OF IN A FLOOD PLAIN WILL REQUIRE A KANSAS STATE BOARD OF AGRICULTURE PERMIT. ANY MATERIAL DUMPED IN WATERS OF THE UNITED STATES OR WETLANDS IS SUBJECT TO U.S. CORPS OF ENGINEERS PERMITTING REGULATIONS. ANY MATERIAL BURIED OR STOCKPILED BEYOND APPROVED CONSTRUCTION LIMITS WILL REQUIRE ADDITIONAL ARCHAEOLOGICAL INVESTIGATIONS UNLESS BURIED IN A PREVIOUSLY APPROVED BORROW LOCATION.
- TREES AND SHRUBS IN PUBLIC RIGHT-OF-WAY WHICH ARE IN DIRECT CONFLICT WITH PROPOSED NEW CONSTRUCTION SHALL BE REMOVED BY THE CONTRACTOR WITH THE ENGINEER'S APPROVAL. TREES AND SHRUBS WHICH ARE NOT IN DIRECT CONFLICT WITH PROPOSED NEW CONSTRUCTION SHALL BE SAVED AND PROTECTED FROM DAMAGE.
- THE CONTRACTOR SHALL GIVE ALL PROPERTY OWNERS AND/OR TENANTS OF DEVELOPED PROPERTY ABUTTING THE CONSTRUCTION OF THIS PROJECT A MINIMUM OF TEN (10) DAYS NOTICE PRIOR TO START OF CONSTRUCTION.
- THE CONTRACTOR SHALL BE RESPONSIBLE FOR PRESERVING PROPERTY IRONS. THE CONTRACTOR WILL BE REQUIRED TO RE-ESTABLISH ANY PROPERTY IRONS WHICH ARE DAMAGED OR DESTROYED BY HIS CONSTRUCTION OPERATIONS. SUCH IRONS SHALL BE RE-ESTABLISHED BY A LICENSED LAND SURVEYOR IN ACCORDANCE WITH STATE LAWS.
- THE WATER DISTRIBUTION DIVISION SHALL FIELD LOCATE WATER VALVES ONE TIME DURING CONSTRUCTION WHEN REQUESTED BY THE CONTRACTOR. IT SHALL BE THE CONTRACTOR'S RESPONSIBILITY TO PRESERVE SUCH FIELD LOCATIONS DURING THE CONSTRUCTION PROCESS. WATER VALVES, VALVE BOXES OR FIRE HYDRANTS DAMAGED DURING CONSTRUCTION SHALL BE REPAIRED BY CONTRACTOR AT HIS OWN EXPENSE. VALVE BOXES AND WATER METERS WITHIN THE PROJECT LIMITS SHALL BE ADJUSTED TO MATCH FIELD GRADES.
- THE CONTRACTOR SHALL NOTIFY THE CONSULTANT ENGINEER AND TOM MASON WITH THE CITY AT 316-268-4574 WITH THE ANTICIPATED CONSTRUCTION START DATE AND NOTIFY THEM OF PROJECT COMPLETION. STAKING AND INSPECTION FOR THIS PROJECT WILL BE THE RESPONSIBILITY OF THE CONTRACTOR.
- IF TRAFFIC WILL BE IMPACTED BY CONSTRUCTION, A TRAFFIC CONTROL PLAN MUST BE SUBMITTED AND APPROVED BY THE CITY TRAFFIC ENGINEER, BRIAN COON AT TRAFFIC@WICHITA.GOV BEFORE CONSTRUCTION CAN BEGIN. THE CONTRACTOR SHALL BE RESPONSIBLE FOR ALL TRAFFIC CONTROL MEASURES TO FACILITATE CONSTRUCTION. ALL CONSTRUCTION ZONE MARKINGS AND SIGNAGE SHALL CONFORM TO THE LATEST VERSION OF THE MANUAL ON UNIFORM TRAFFIC CONTROL DEVICES (MUTCD) AS PUBLISHED BY THE US DEPT. OF TRANSPORTATION, FEDERAL HIGHWAY ADMINISTRATION. ALL COSTS ASSOCIATED WITH CONSTRUCTION MARKINGS AND SIGNAGE SHALL BE THE CONTRACTOR'S RESPONSIBILITY.
- ALL ELEVATIONS SHOWN ARE NAVD 88.
- ALL AREAS DISTURBED DURING CONSTRUCTION THAT WILL NOT BE UNDER PROPOSED PAVEMENT SHALL BE RESTORED TO MATCH EXISTING CONDITIONS.

- ALL STUBS AND PLUGGED PIPES SHALL BE LOCATED WITH GREEN PLASTIC TAPE IN THE SAME MANNER AS RISERS.
- CONNECTING TO EXISTING MANHOLES:
PRIOR TO LAYING SEWER LINES USING EXISTING STUBS IN EXISTING MANHOLES, THE CONTRACTOR SHALL EXPOSE AND VERIFY THE ELEVATION, GRADE AND ALIGNMENT OF EXISTING STUBS AND NOTIFY THE ENGINEER OF ANY DEVIATION FROM THE PLANS. WHERE CONNECTION TO AN EXISTING MANHOLE THAT DOES NOT HAVE AN EXISTING STUB OR THE STUB IS UNUSABLE DUE TO ELEVATION GRADE OR ALIGNMENT, THE CONTRACTOR SHALL CORE CUT INTO EXISTING MANHOLE WALL TO MAKE CONNECTION USING APPROVED WATER STOP GASKET AND RESHAPE THE EXISTING MANHOLE INVERT TO PROVIDE SMOOTH FLOW. THE COST FOR CONNECTING TO EXISTING MANHOLES IS INCIDENTAL TO THE PROJECT.
- CONTRACTOR SHALL LIMIT THE EXTENT OF TRENCH OPEN OVERNIGHT AND WEEKENDS TO LESS THAN 50 FEET.
- CONTRACTOR SHALL PROVIDE POSITIVE DRAINAGE AWAY FROM ALL MANHOLE COVERS.
- THE CONTRACTOR SHALL PREVENT ANY CONSTRUCTION DEBRIS FROM ENTERING THE EXISTING SANITARY SEWER DURING CONSTRUCTION.
- THE CONTRACTOR SHALL BE RESPONSIBLE FOR MAINTAINING CONTINUOUS FLOW OF SEWAGE THROUGH CONSTRUCTION. CONTRACTOR'S PROPOSED METHOD FOR MAINTAINING SEWAGE FLOW SHALL BE SUBMITTED AND APPROVED BY THE SEWER MAINTENANCE DIVISION (316-268-4073) PRIOR TO STARTING AND BY-PASSING OF SEWAGE FLOWS.
- ANY OVER EXCAVATION FROM MANHOLE AND PIPE REMOVAL SHALL BE BACKFILLED WITH AG-3 COMPACTED TO 90-95% ASTM D693.
- CITY MAINTENANCE OF SANITARY SEWER MAINS ENDS AT LAST STRUCTURE WITHIN THE EASEMENT OR RIGHT-OF-WAY.
- ANY SIDEWALK, DRIVE APPROACH, CURB, OR STREET PAVEMENT REMOVED TO CONSTRUCT PROJECT MUST HAVE A PAVEMENT CUT PERMIT AND BE REPLACED BY THE CITY CONTRACTOR. PERMITS CAN BE OBTAINED BY CALLING 316-268-4501 OR 316-268-4480.
- THE CONTRACTOR SHALL INSTALL AND/OR MAINTAIN EROSION CONTROL METHODS AS SPECIFIED. THE GENERAL LOCATION OF THE REQUIRED EROSION CONTROL IS ILLUSTRATED ON THE EROSION CONTROL PLAN. THE CONTRACTOR SHALL BE RESPONSIBLE FOR MAINTAINING THE EROSION CONTROL SHOWN THROUGH THE COMPLETION OF THIS PROJECT. INSTALLATION OF THESE BMP'S DOES NOT RELIEVE THE CONTRACTOR OF THE RESPONSIBILITY OF ABATING SOIL EROSION.

BENCHMARKS

- BENCHMARK LIST**
- BM #200 - SQUARE CUT SOUTHEAST CORNER OF CONCRETE TELEPHONE VAULT. ELEV. = 1314.23 (NGVD 29)
 - BM #34 - (EXISTING BENCHMARK) CHISELED "X" ON TOP W CURB OF AIRPORT ROAD AND W OF BUILDING #1640. 38' S OF LIGHT POLE #28. ELEV. = 1315.77 (NGVD 29)

CONTROL POINTS

- CONTROL POINTS**
- PT. NO. 303
N: 15,482.3410, E: 12,992.8970
60D NAIL
1. 19.64' SOUTH TO NE CORNER OF BUILDING
2. 25.90' NORTHEAST TO SOUTH GATE POST AT HARRY ST
3. 10' ± EAST TO CHAIN LINK FENCE N-S
 - PT. NO. 5001
N: 15,558.8019, E: 12,657.2327
60D NAIL
1. 25.60' SOUTHWEST TO NW FACE OF POWER POLE, NORTH SIDE OF HARRY ST.
2. 11.22' NORTHWEST TO TELEPHONE MARKER SIGN
3. 30.5' ± SOUTH TO NORTH EDGE OF HARRY ST.
 - PT. NO. 5022
N: 15,520.6400, E: 13,030.6939
PK NAIL @ OF HARRY ST. EXTENDED
1. 23.68' NORTHWEST TO NORTH GATE POST
2. 29.26' SOUTHWEST TO SOUTH GATE POST
3. 64.37' NORTHEAST TO SW CORNER OF CONCRETE VAULT
 - PT. NO. 5023
N: 15,535.0879, E: 13,351.2543
PK NAIL @ OF HARRY ST. EXTENDED
1. 32.88' SOUTHWEST TO NORTHEAST CORNER OF CONCRETE AREA INLET
2. 30.82' NORTHWEST TO SOUTHEAST CORNER OF CONCRETE AREA INLET
3. 16' ± WEST OF WEST EDGE OF TAXIWAY

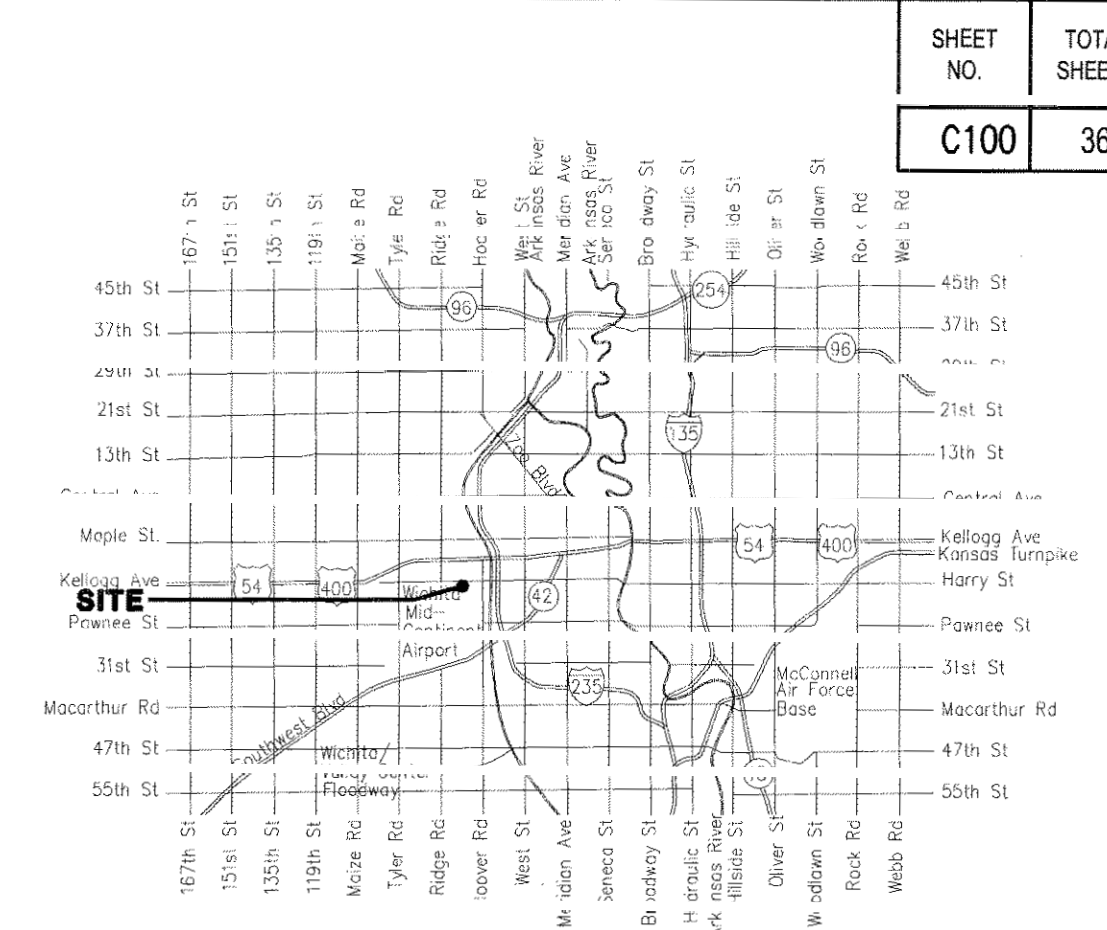
PROPERTY CORNERS

POINT	NORTH	EAST
1101	15,609.5265	12,660.8231
1102	15,610.2773	12,685.8199
1103	15,560.3386	12,688.6816

(1101) = COORDINATE POINT NO.

SANITARY SEWER to serve HANGAR DYNAMIX 1610 AIRPORT ROAD CITY OF WICHITA, KANSAS

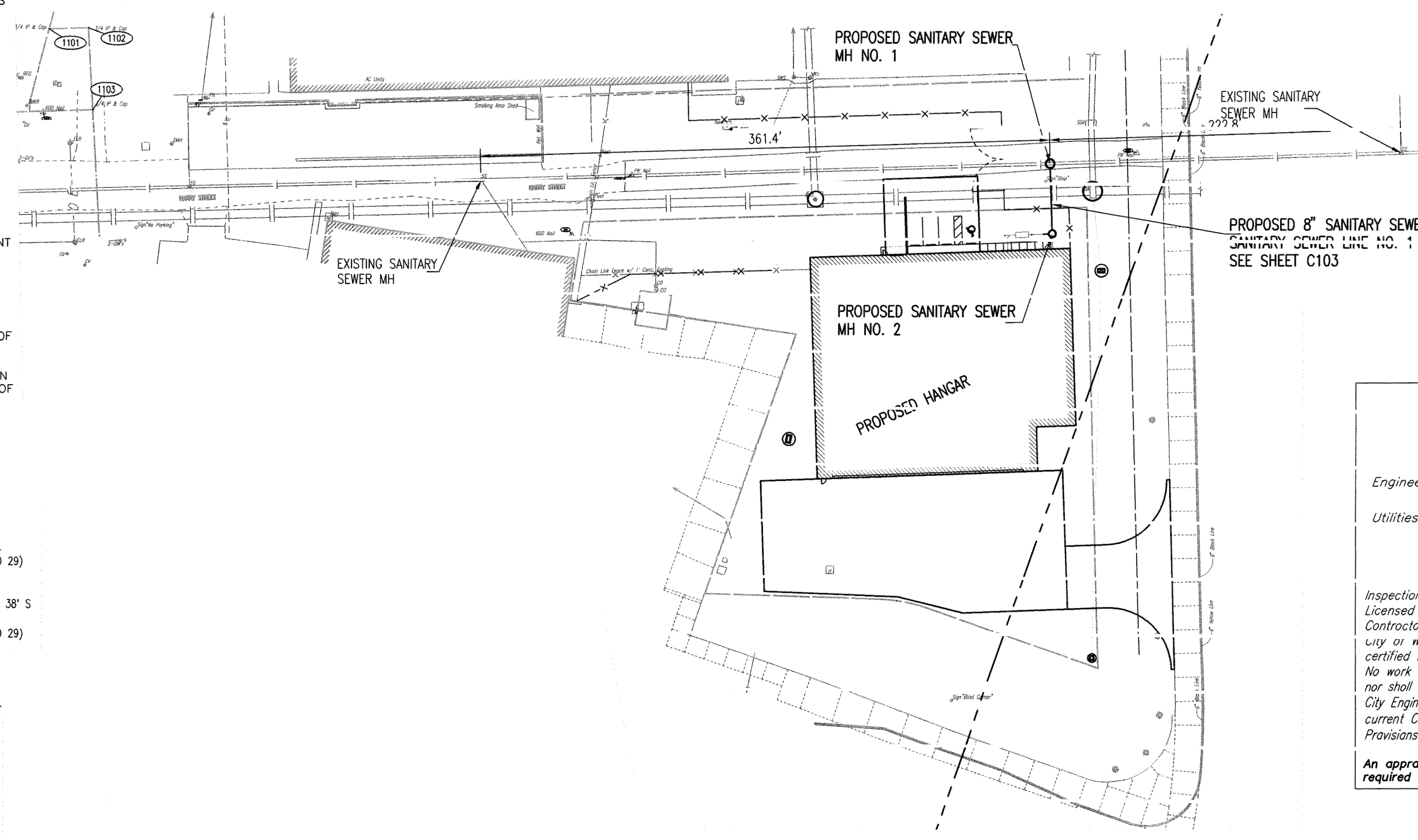
Gary Janzen, P.E. City Engineer
Project Number
2258 PPS (607861)



Vicinity Map

SHEET INDEX

SHEET NO.	TITLE SHEET
C100	PRECAST MH DETAIL
C101	MANHOLE FRAM AND COVER DETAIL
C102	SANITARY SEWER LINE NO. 1
C103	SANITARY SEWER LINE NO. 2
C301-C305	EROSION CONTROL BMP DETAILS



APPROVED AS NOTED BY WICHITA PUBLIC WORKS ENGINEERING DIVISION

Engineering: *Robert A. Zim* 2/23/16
Utilities: *[Signature]* 2-23-16

NOTE TO CONTRACTORS

Inspection and testing for this project is to be provided by a Licensed Consulting Engineering Firm under contract with the Contractor. Said inspection to be in accordance with the City of Wichita standard construction engineering practices and certified by a Licensed Professional Engineer in the state of Kansas. No work shall be performed by the Contractor without such inspection nor shall any work be commenced without written authorization by City Engineering. All Construction and Materials shall comply with the current City of Wichita Specifications and Standards and Special Provisions. (an file and available at Wichita.gov).

An approved copy of these plans signed by City staff are required on-site.

JANUARY 2016

**AS BUILT PLANS
CONTRACTOR: MIES CONSTRUCTION
INSPECTOR: DAKOTA ZIMMERMAN
RUGGLES & BOHM
PDF BY: DGZ 4/4/16**

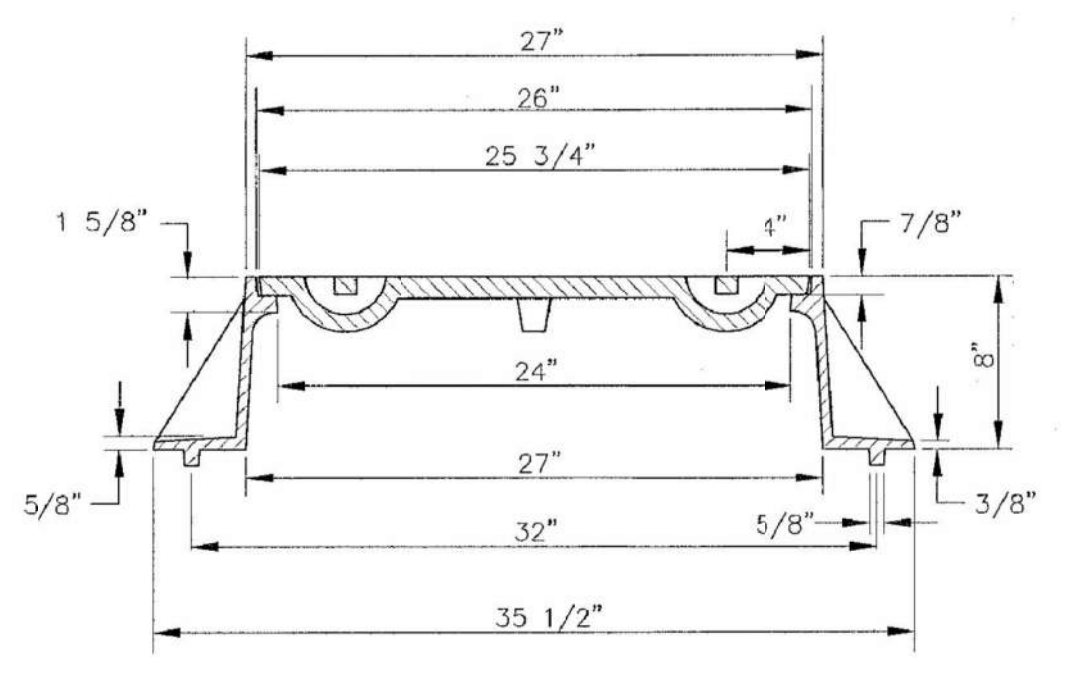
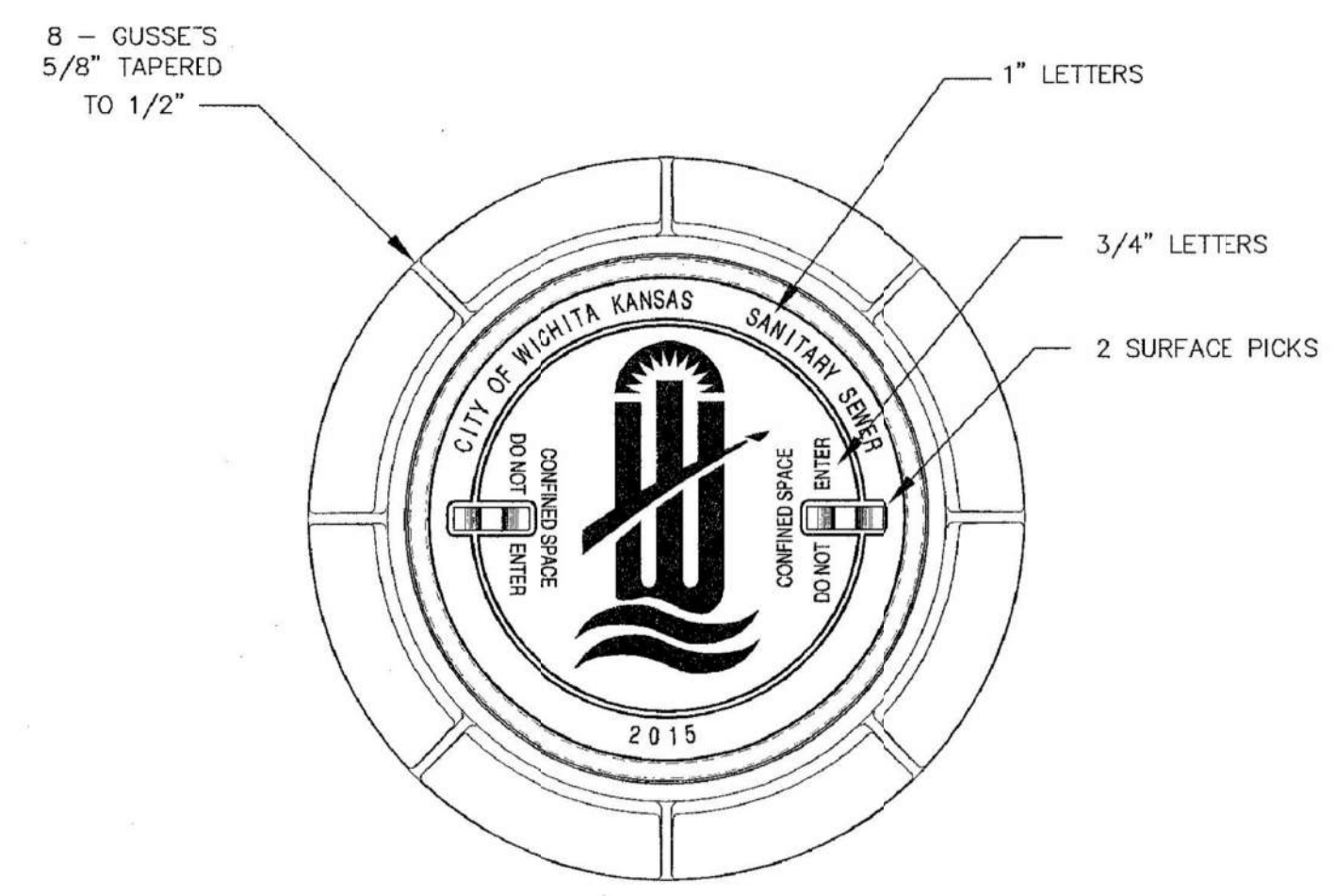


THE WICHITA AIRPORT AUTHORITY
WICHITA AIRPORT, 303 SOUTH TOPEKA
RIDGE ROAD AND HARRY STREET UTILITY EXTENSIONS
PPS TITLE

CITY OF WICHITA PROJECT NO. 452-424-2

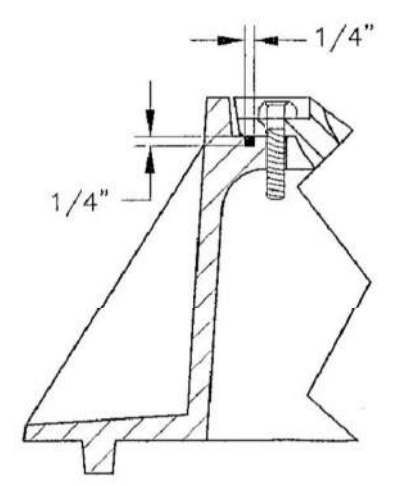
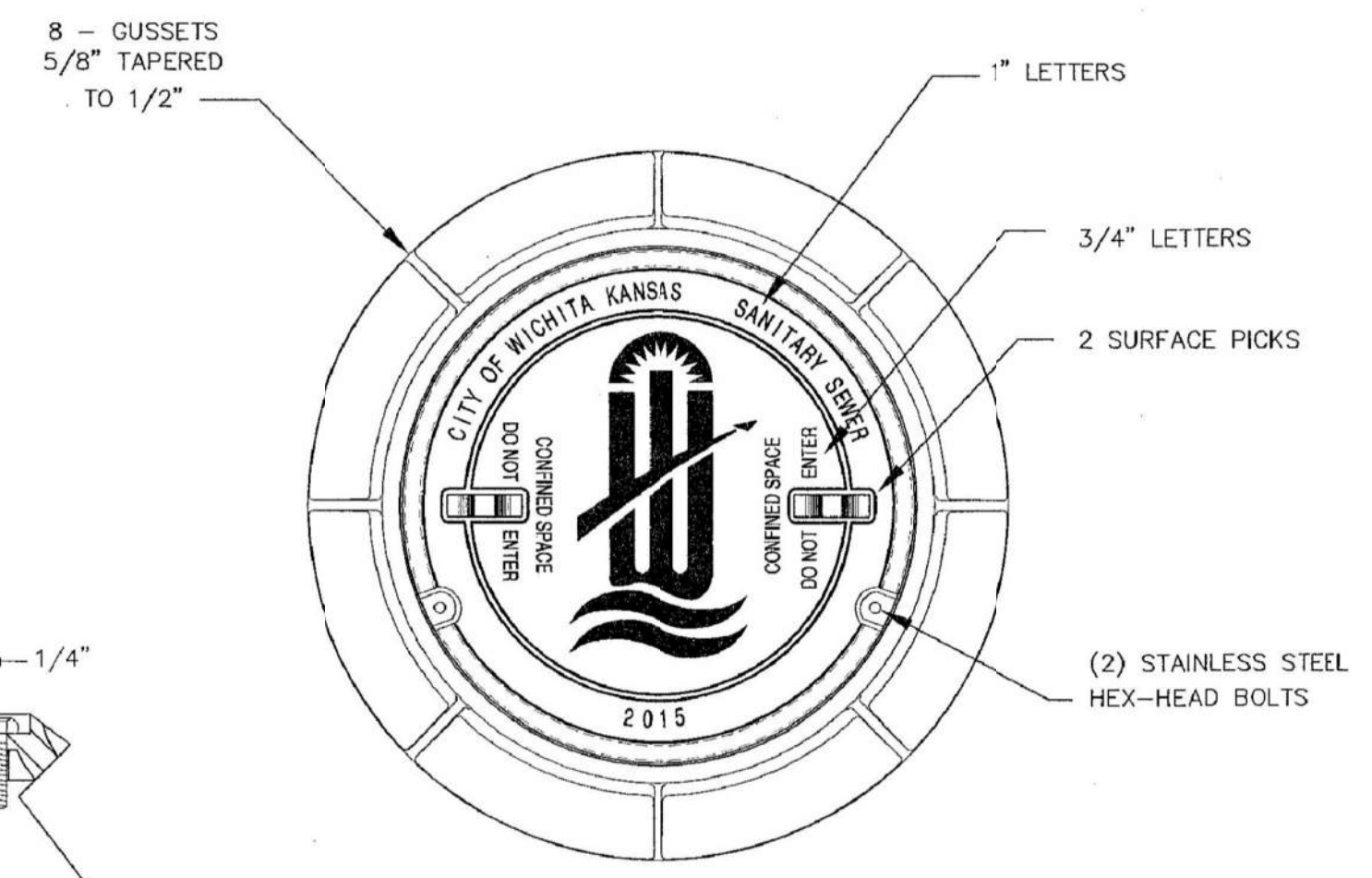
PEC PROFESSIONAL ENGINEERS CONSULTANTS P.A.
303 SOUTH TOPEKA WICHITA, KS 67202
316-262-2691 www.pec1.com

Saved: 02-17-2016 10:47:56 AM by: TJS
 Plotted: 02-17-2016 11:12:44 AM by: TJS
 U:\Wichita-Files\2015\15102\001\Main\Drawings\PLANS\15102-000 C100 PPS TITLE

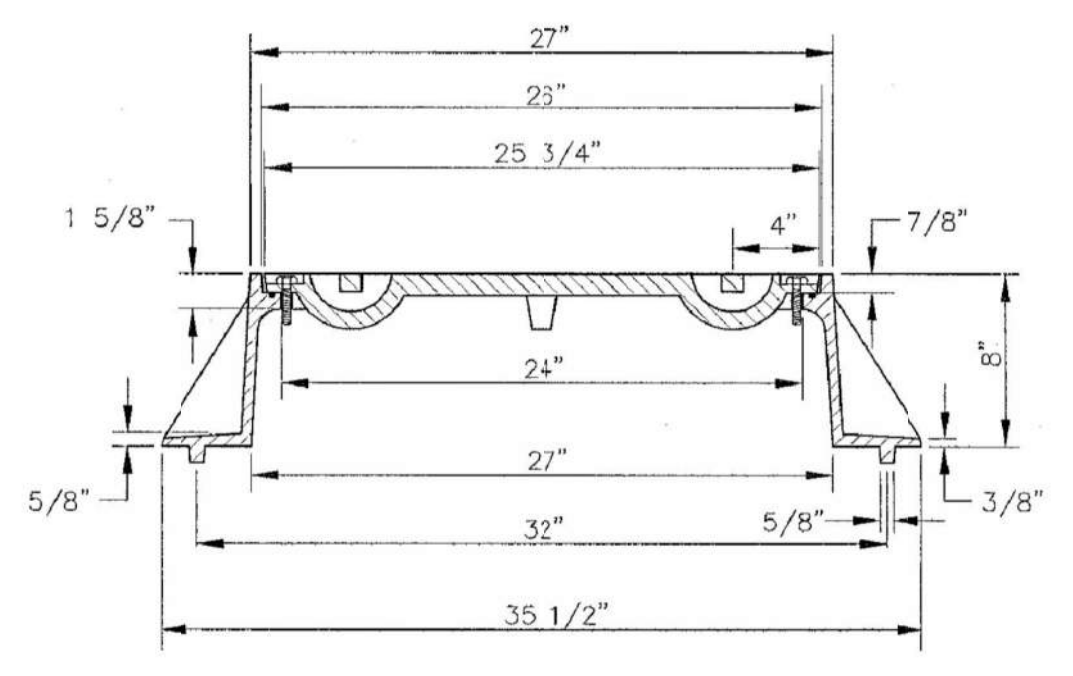


STANDARD MANHOLE FRAME & COVER
DEETER #1261 OR EJIW #1936-Z1

NOTE:
1. FURNISHED WITH MACHINED HORIZONTAL BEARING SURFACE.



DETAIL OF T-GASKET

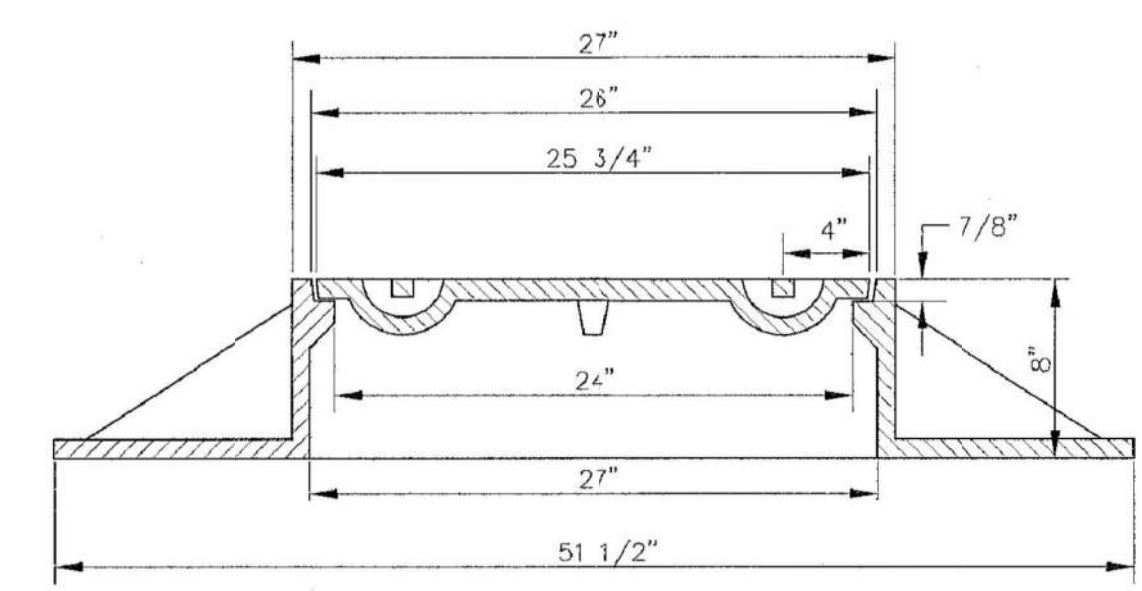
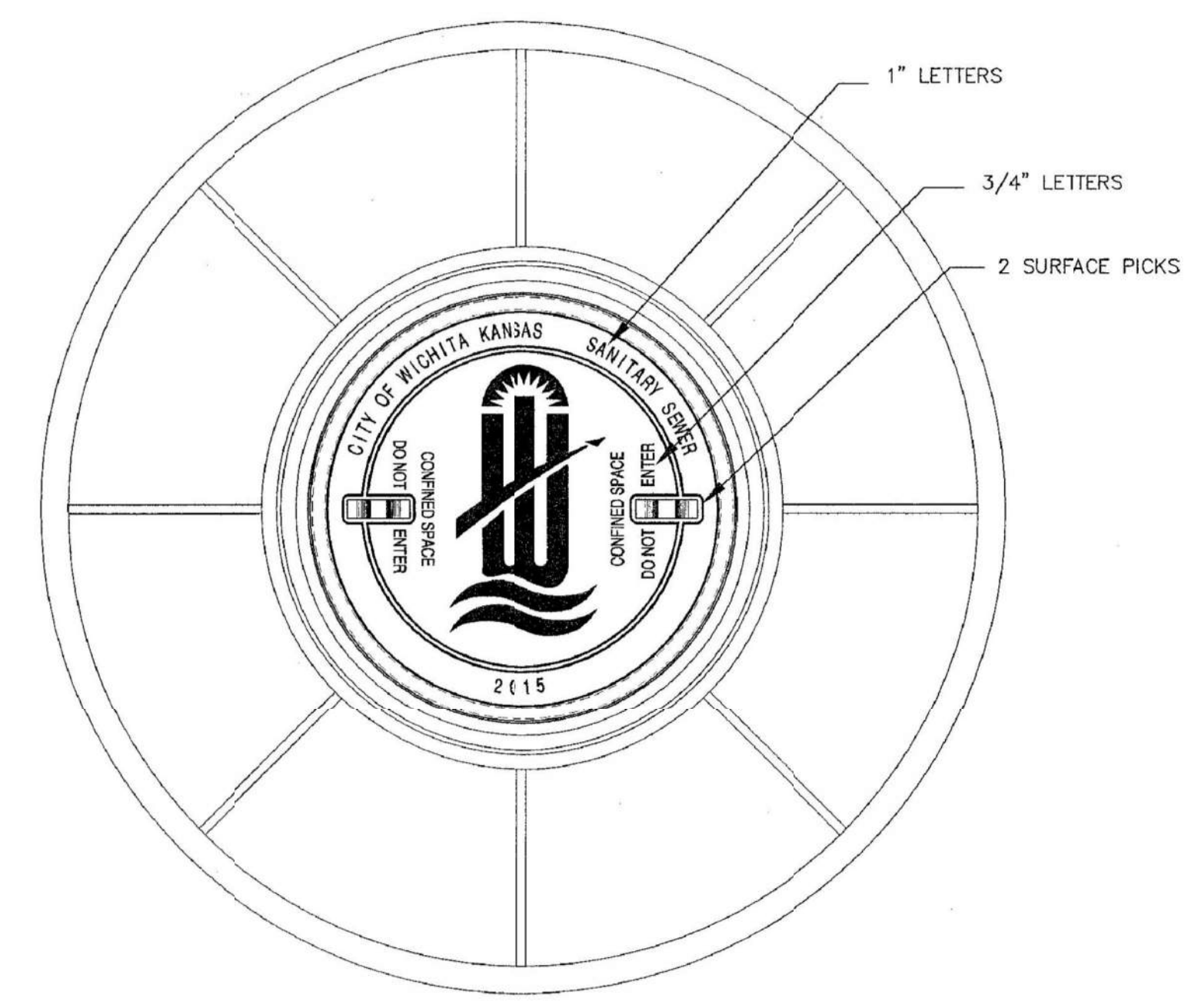


BOLT DOWN MANHOLE FRAME & COVER
DEETER #1261 OR EJIW #1936-Z1

NOTE:
1. FURNISHED WITH MACHINED HORIZONTAL BEARING SURFACE.
2. FURNISHED WITH A T-GASKET IN THE FRAME.

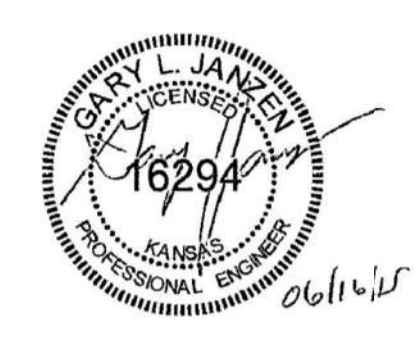
GENERAL NOTES

- MANHOLE CASTINGS SHALL BE MANUFACTURED USING GOOD QUALITY GRAY IRON CONFORMING TO CLASS 30 OF A.S.T.M. DESIGNATION A-48. DIMENSIONS SHOWN ON THE DETAILED DRAWINGS SHALL BE CONSIDERED AS MINIMUM REQUIREMENTS AND ANY DEVIATIONS FROM THE DIMENSIONS SHOWN MUST BE SPECIFICALLY APPROVED. THE FINISHED CASTINGS SHALL BE OF UNIFORM QUALITY, FREE FROM BLOWHOLES, POROSITY, HARD SPOTS, SHRINKAGE DISTORTIONS OR OTHER DEFECTS.
- MANHOLE CASTINGS SHALL BE MANUFACTURED SUCH THAT A COVER MANUFACTURED BY ANY ONE FOUNDRY WILL FIT INTERCHANGEABLY INTO A FRAME MANUFACTURED BY ANOTHER FOUNDRY AND STILL MEET ALLOWABLE CLEARANCES AND NON-ROCKING REQUIREMENTS. THIS WILL REQUIRE MANUFACTURING OF THE MATCHING FACES ON THE COVER AND THE FRAME TO CLOSE TOLERANCES.
- THE OUTSIDE CIRCUMFERENCE OF THE VERTICAL FACE OF THE COVER AND THE INSIDE CIRCUMFERENCE OF THE VERTICAL FACE IN THE FRAME RECESS SHALL BE MANUFACTURED TO TOLERANCES SUCH THAT THE CLEARANCE BETWEEN THE COVER AND FRAME WILL NOT EXCEED 1/8" AT ANY POINT AROUND THE CIRCUMFERENCE OF THE COVER. THE SEATING SURFACES BETWEEN THE COVER AND FRAME SHALL BE MACHINED SUCH THAT THESE SEATING SURFACES SHALL MAKE FULL CONTACT FOR THEIR FULL CIRCUMFERENCE TO PRECLUDE THE COVER FROM ROCKING IN THE FRAME.
- THE MANHOLE FRAME AND COVER SHALL BE MARKED WITH LETTERING INDICATING THE NAME OF THE MANUFACTURER AND THE YEAR WHEN THE COVER OR FRAME WAS CAST. THE COVER SHALL BE FURTHER IDENTIFIED WITH REGARDS TO OWNERSHIP USING LETTERS AT LEAST 1 INCH IN HEIGHT. THIS IDENTIFICATION SHALL BE "CITY OF WICHITA SANITARY SEWER". THE TOP SURFACE OF THE COVER SHALL BE MANUFACTURED IN WITH CITY OF WCHITA DESIGN AS INDICATED ON THE DRAWINGS. SMOOTH BLOCKOUTS SHALL BE UTILIZED TO HIGHLIGHT THE LETTERING ON THE COVER SURFACE. THE TOTAL AREA OF SMOOTH SURFACE BLOCKOUT SHALL NOT EXCEED THE AREA AS INDICATED ON THE DRAWING. POSITIONING OF SMOOTH BLOCKOUTS AND LETTERING MAY VARY FROM THAT SHOWN ON THE DETAILED DRAWING.



WIDE FLANGED FRAME & COVER
DEETER #1261A

NOTE:
1. FURNISHED WITH MACHINED HORIZONTAL BEARING SURFACE.



REVISD: JUNE 2015		
MANHOLE FRAME AND COVER (SANITARY SEWER)		
CITY ENGINEER GARY JANZEN, P.E.		
PROJECT NUMBER	OCA NUMBER	DATE
CITY ENGINEER'S OFFICE CITY HALL - SEVENTH FLOOR 455 NORTH MAIN STREET WICHITA, KANSAS 67202-1620 (316) 268-4501		SHEET

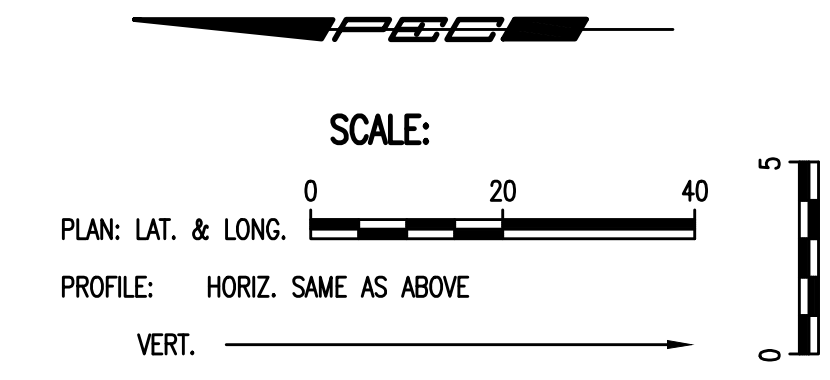
SS-102

THE WICHITA AIRPORT AUTHORITY
WICHITA DWIGHT D. EISENHOWER NATIONAL AIRPORT
RIDGE ROAD AND HARRY STREET UTILITY EXTENSIONS
MH FRAME AND COVER

CITY OF WICHITA PROJECT NO. 452-424-2

Date JANUARY 2016 Job No. 20-15702-000-019

Saved 02-20-2016 11:11:52 AM by TDS
 Plot Scale 1:1 02-29-2016 2:45:07 PM by NSM
 U:\Wichita-Facilities\2015\15702-000\Drawings\PLANS\15702-000 C102.MH FRAME & COVER



N: 15,528.2170, E: 13,296.2938
Sta. 1+00.0*

Construct MH 1 over existing 24" pipe. Remove top half of 24" pipe thru MH. 5' Dia. Standard Outside Drop MH. Shape invert to provide smooth flow. Manhole interior to be coated as per notes this sheet. Remove & Replace Asphalt Pavement as necessary for MH construction. Min. Thickness = 6". This work shall be subsidiary to MH construction. (City maintenance ends at MH 1 and Sanitary Sewer Line No. 1 is privately owned and maintained.)

CAUTION !!!
66" RCP Storm Water Sewer

CAUTION !!!
6" Gas Line (Black Hills)

CAUTION !!!
Buried Electric (Westar Energy)

CAUTION !!!
Buried Telephone (AT&T)

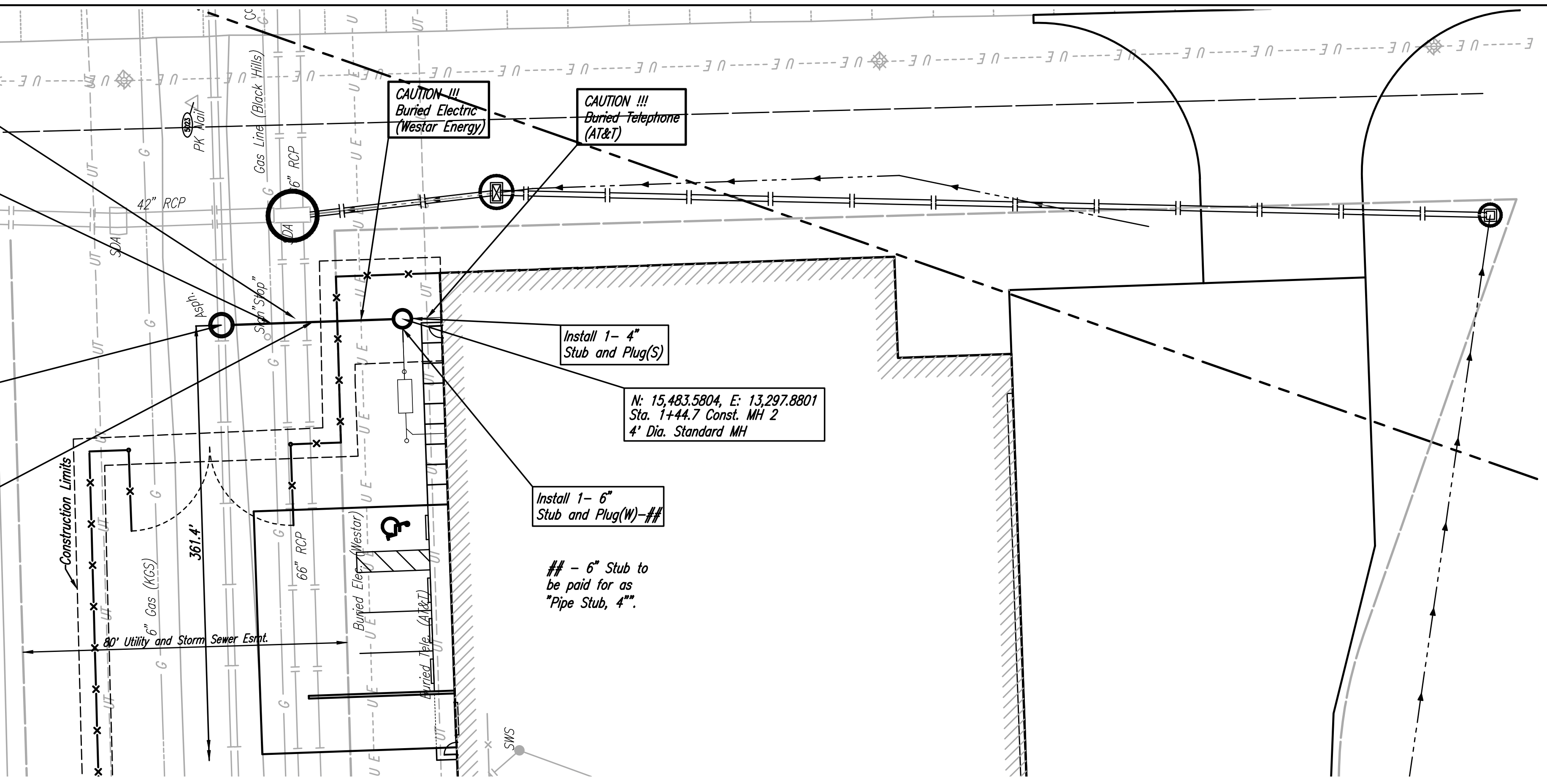
N: 15,483.5804, E: 13,297.8801
Sta. 1+44.7 Const. MH 2
4' Dia. Standard MH

Install 44.7 L.F. 8" Pipe

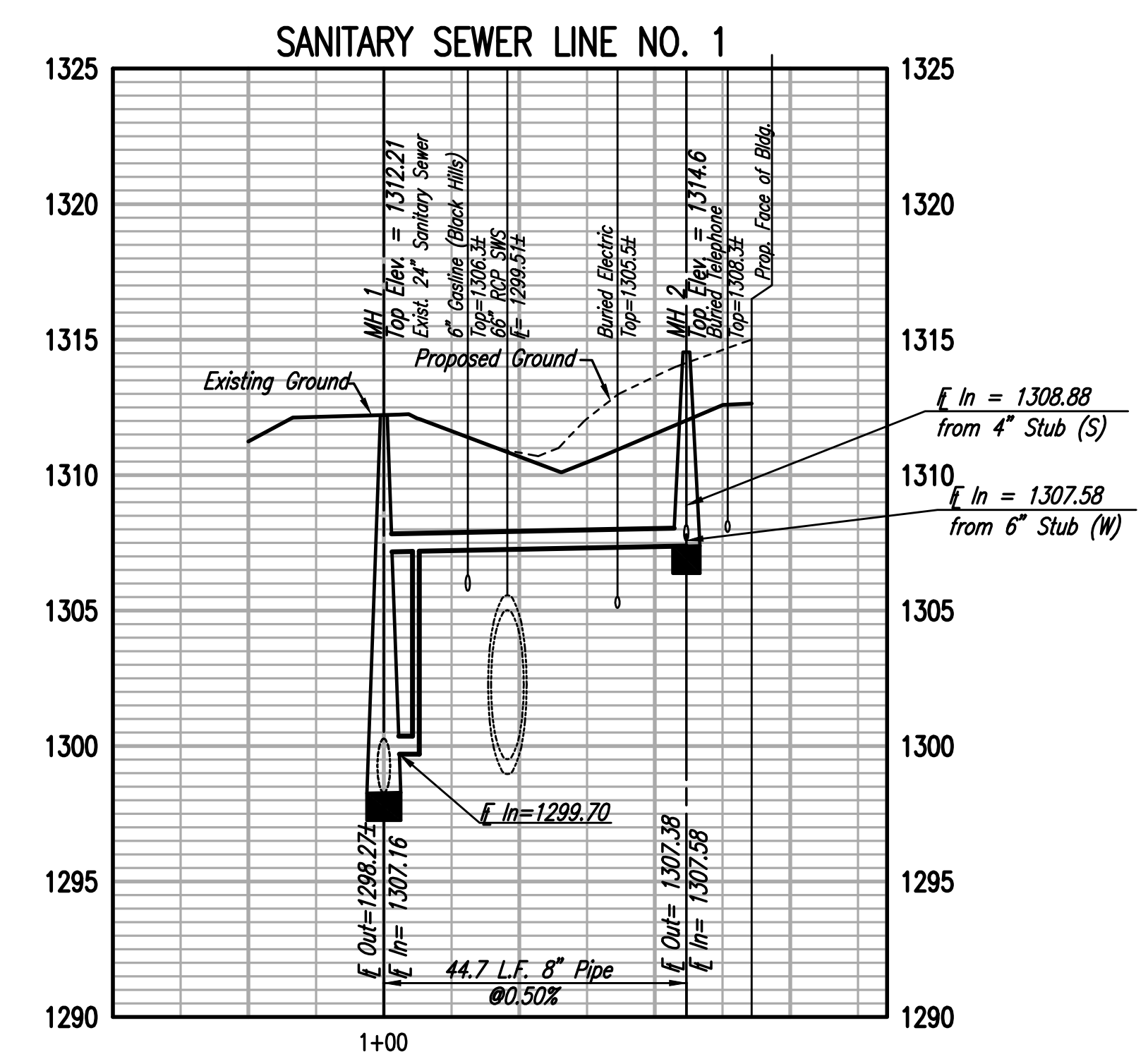
Install 1- 6" Stub and Plug(W)-##

- 6" Stub to be paid for as "Pipe Stub, 4"

* PRIOR TO BEGINNING CONSTRUCTION, THE CONTRACTOR SHALL EXCAVATE THE EXISTING 24" VCP PIPE AT SANITARY SEWER STATION 1+00.0 TO VERIFY ITS HORIZONTAL AND VERTICAL LOCATION. THE PIPE LOCATION SHALL BE REPORTED TO THE ENGINEER SO THAT ANY NECESSARY PLAN MODIFICATIONS CAN BE MADE. ANY ADDITIONAL LABOR OR MATERIALS NECESSARY TO COMPLETE THE CONNECTION SHALL BE CONSIDERED SUBSIDIARY TO THE PROJECT.



ALL INSIDE SURFACES OF THE CONCRETE MANHOLE WHICH WOULD BE EXPOSED TO SEWER GAS SHALL BE COATED WITH A CITY APPROVED EPOXY COATING SYSTEM SUCH AS RAVEN 405 SPECTRASHIELD, WARREN ENVIRONMENTAL S301, SAUERREISEN SEWERCARD 210S, OR ZEBRON. PRODUCTS SHALL BE APPLIED AT A MINIMUM THICKNESS OF 90 MILS, OR TO THE MINIMUM THICKNESS REQUIRED BY THE MANUFACTURER'S SPECIFICATIONS, WHICHEVER IS THICKER. PLASTIC LINING OF THE MANHOLE WILL NOT BE ALLOWED.



AS BUILT PLANS
CONTRACTOR: MIES CONSTRUCTION
INSPECTOR: DAKOTA ZIMMERMAN
RUGGLES & BOHM
PDF BY: DGZ 4/4/16



THE WICHITA AIRPORT AUTHORITY
WICHITA DWIGHT D. EISENHOWER NATIONAL AIRPORT
RIDGE ROAD AND HARRY STREET UTILITY EXTENSIONS
SANITARY SEWER NO. 1

CITY OF WICHITA PROJECT NO. 452-424-2

PEC PROFESSIONAL ENGINEERING CONSULTANTS, P.A.
303 SOUTH TOPEKA WICHITA, KS 67202
316-262-2891 www.pec1.com

Date: JANUARY 2016 Job No. 20-15702-000-019

Saved: 02-29-2016 2:32:53 PM by: TDS
 Plot Scale: 1" = 10'-0" (20'-0" for 1:20)
 U:\Wichita-Facilities\15702-000\Drawings\PLANS\15702-000 CUI03 SANITARY SEWER LINE 1