

**BENCHMARKS:**

BM #1: "□" on top of South curb Bluelake Ct, Northwest corner of Lot 84, Block A, Blue Lake Addition  
Elev. = 103.10 (City Datum)

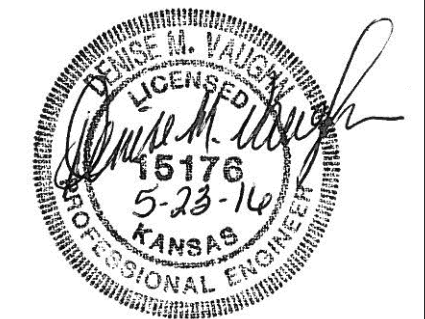
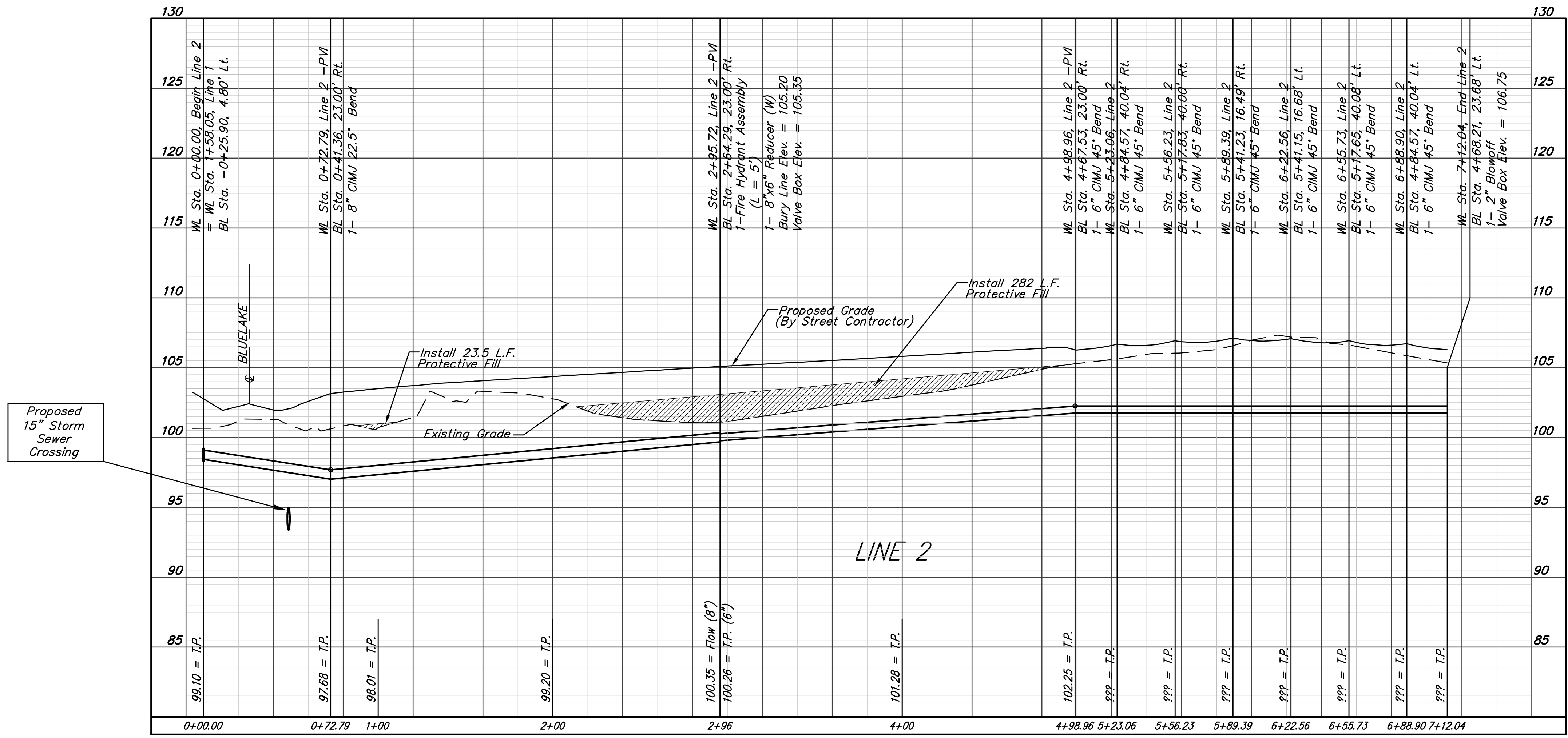
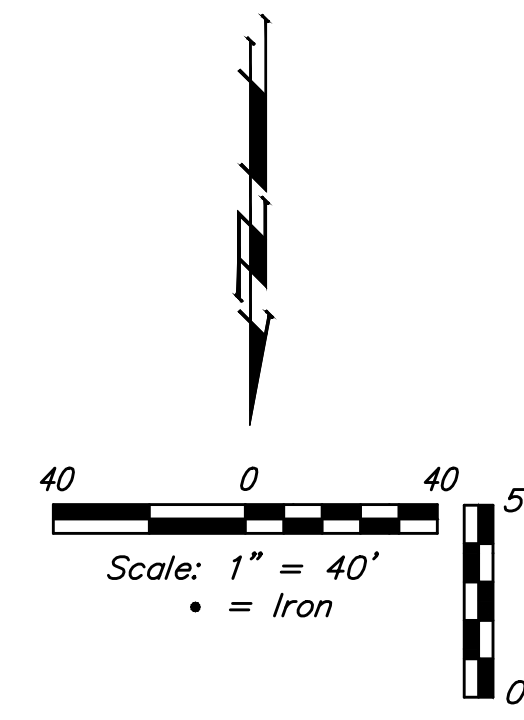
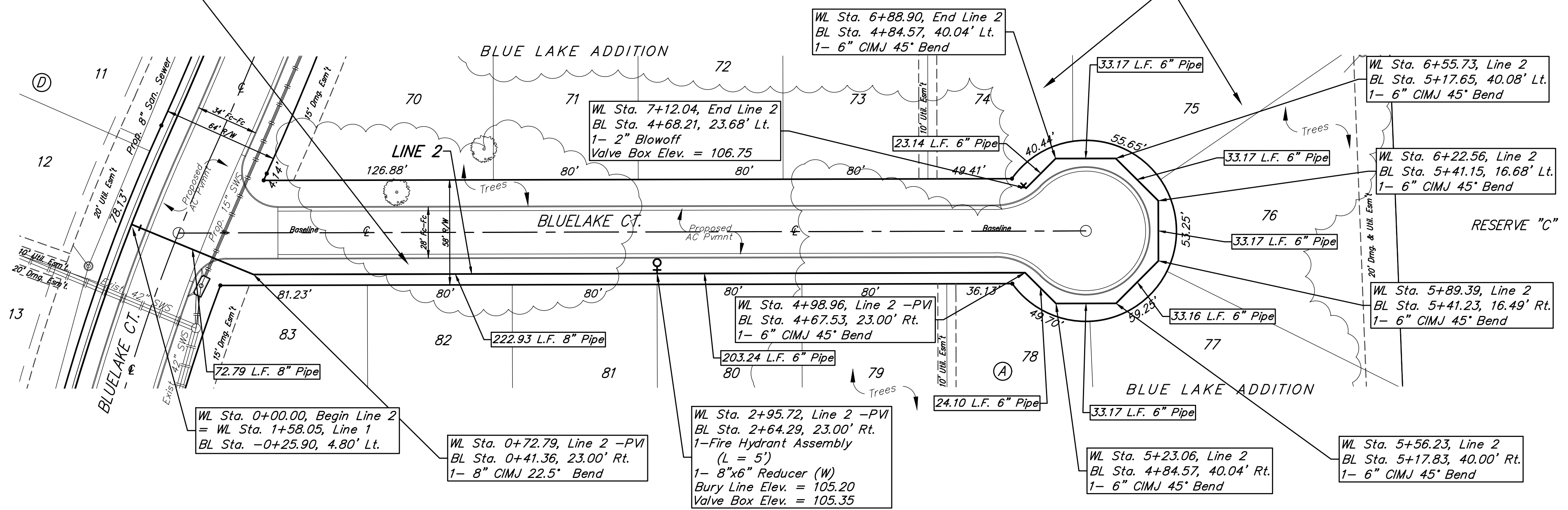
BM #2: "□" Centerline face of Catch Basin, East Curb Lot 84, Block A, Blue Lake Addition  
Elev. = 101.95 (City Datum)

Contractor to remove existing trees only as necessary for construction. To be paid for as lump sum bid item "Site Clearing & Restoration"

Contractor to remove existing trees only as necessary for construction. To be paid for as lump sum bid item "Site Clearing & Restoration"

| FIRE HYDRANTS REQUIRED |         |                     |                       |                             |                                |
|------------------------|---------|---------------------|-----------------------|-----------------------------|--------------------------------|
| LINE                   | STATION | BURY LINE ELEVATION | TOP OF PIPE ELEVATION | FIRE HYDRANT BURY REQUIRED* | VALVE STEM EXT. REQUIRED (ft)* |
| 1                      | 2+95.72 | 105.20              | 105.35                | 5.5'                        | -                              |

Baseline =  
Bluelake Ct.



|   |                             |              |
|---|-----------------------------|--------------|
|   | Blue Lake Addition-Phase 3A |              |
|   | <b>LINE 2</b>               |              |
| Water Distribution System   |                             |              |
| <small>Baughman Company, P.A. 315 Ellis St. Wichita, KS 67211 P 316-262-0149 F 316-262-0149<br/>ENGINEERING   SURVEYING   PLANNING   LANDSCAPE ARCHITECTURE</small> |                             |              |
| PROJECT NUMBER<br>448-89990   | DESIGN<br>DMV               | DRAWN<br>DJL |
| REVISIONS:  | APPROVED                    | DATE<br>4/16 |
|   | SCALE<br>Noted              | SHEET        |
| <b>5 OF 14</b>  |                             |              |