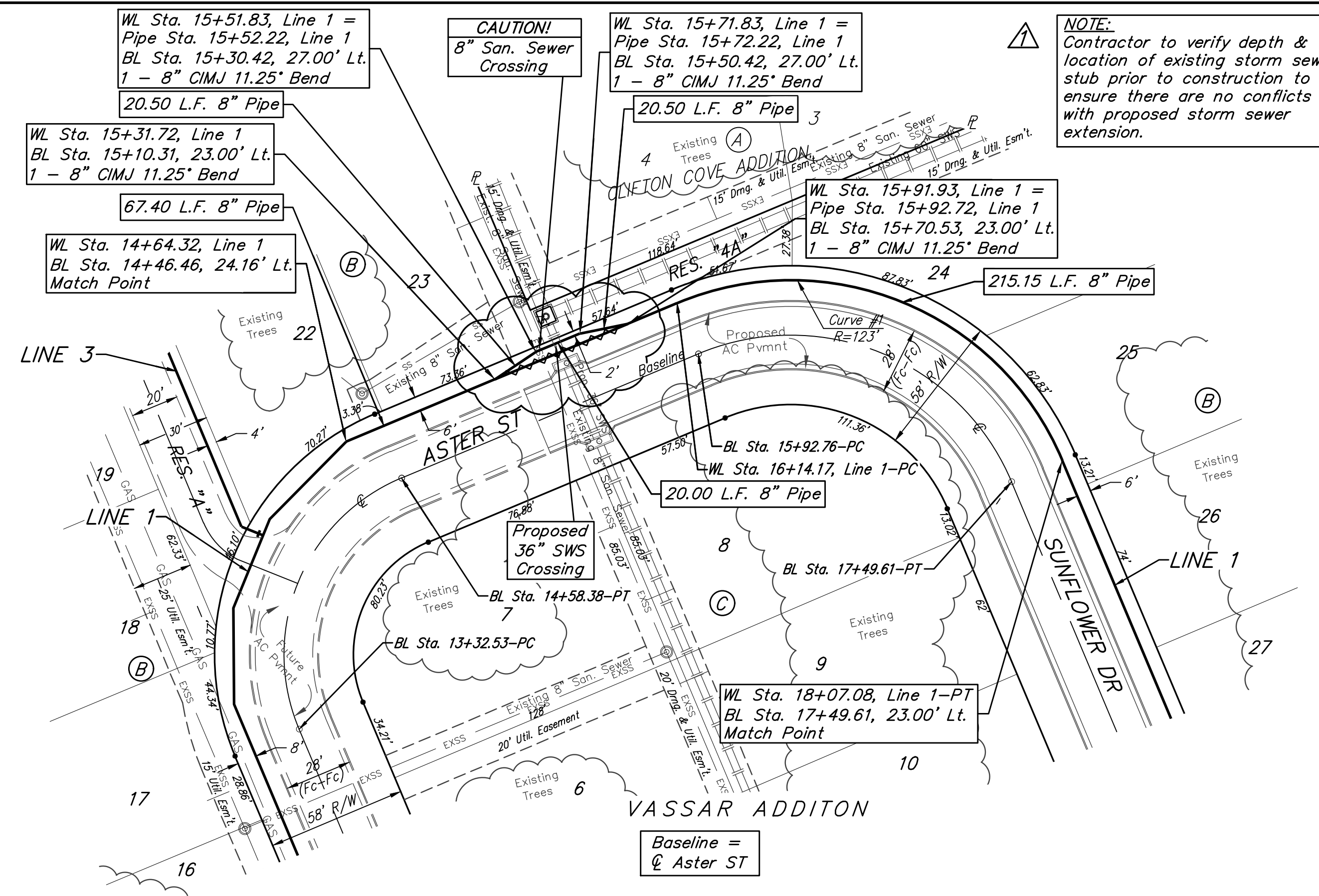


**BENCHMARKS:**  
 Chiseled square on top of catch basin, 43.5' N. & 20.4' W. of the northwest corner of Lot 24, Block B, Vassar Addition.  
 Elev. = 1259.55 NGVD29

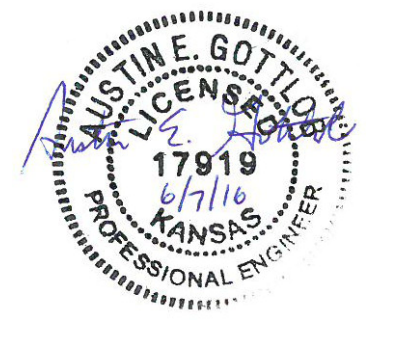
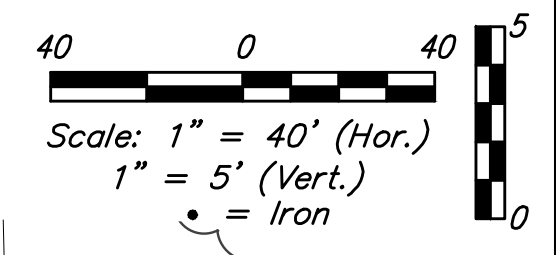
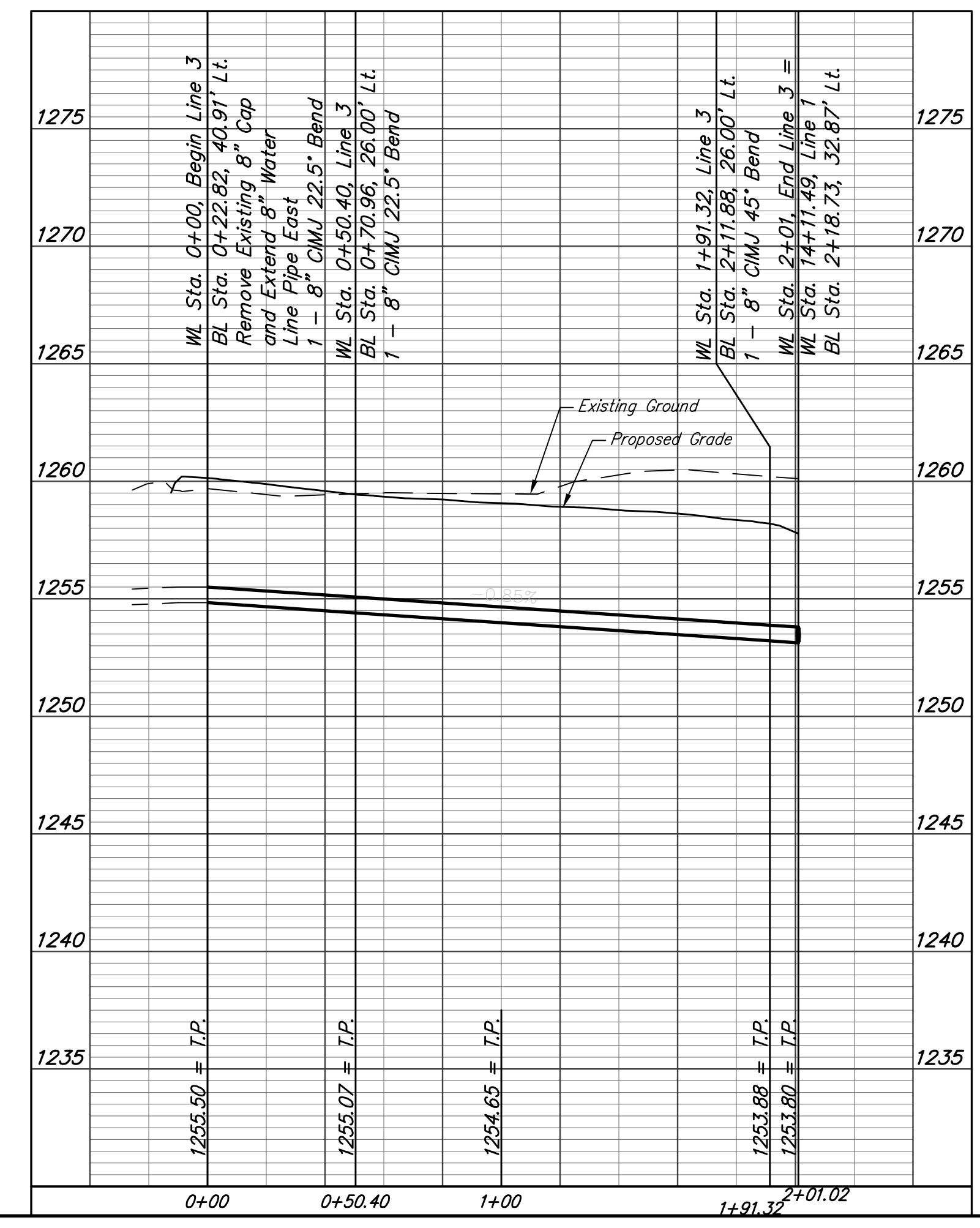
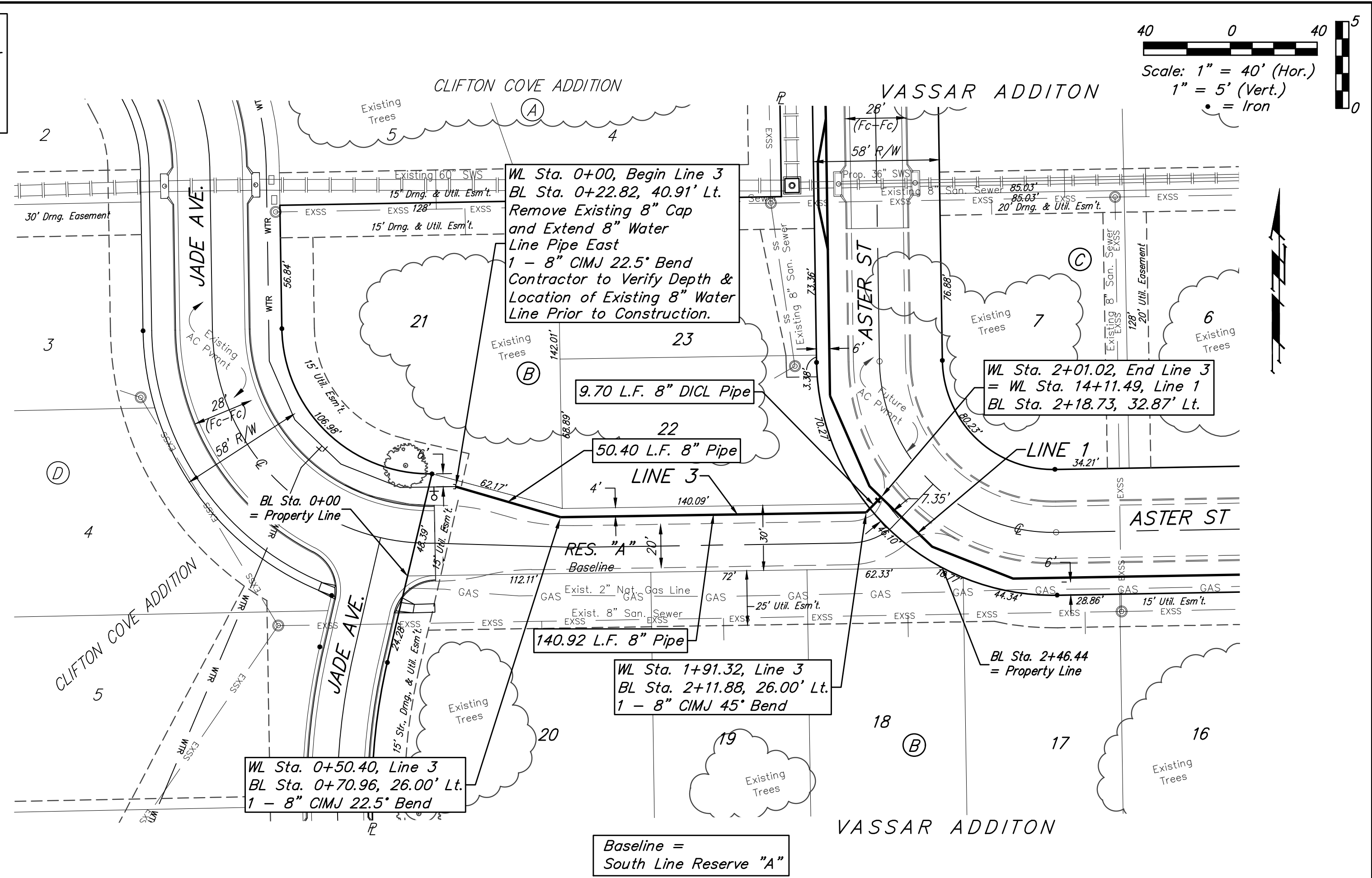
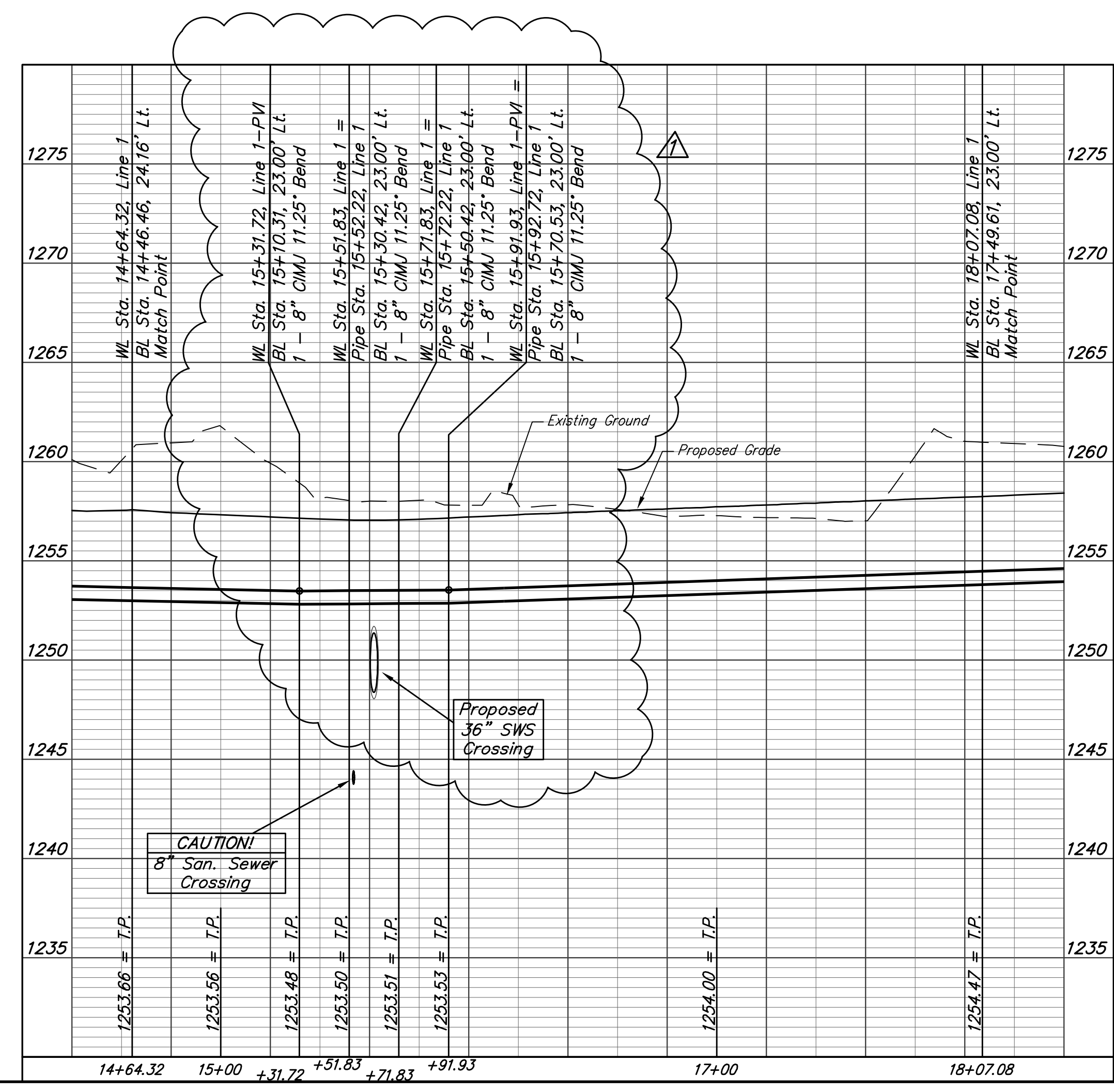
Chiseled cross on top of catch basin, 48.2' N. & 41.2' W. of the northeast corner of Lot 37, Block B, Vassar Addition.  
 Elev. = 1258.46 NGVD29

Chiseled cross on walk, most easterly corner, (block corner), Lot 4, Block D, Clifton Cove Addition, 35.2' W. & 8.5' S. of the northwest corner, Lot 20, Block B, Vassar Addition.  
 Elev. = 1258.62 NGVD29



Curve #1  
 Curve Data Based on Centerline of Pipe  
 Rad. = 123' Delta = 89°51'52" Tangent = 122.71'  
 Arc = 192.91' L.C. = 173.74' Def./Rt. = 13.97508 Min.

Station	Arc	Chord 8' Left	Defl.	Total Defl.
16+14.17	-	-	0°00'00"	0°00'00"
16+25.00	10.83"	11.53"	2°31'21"	2°31'21"
16+50.00	25.00"	26.58"	5°49'23"	8°20'44"
16+75.00	25.00"	26.58"	5°49'22"	14°10'06"
17+00.00	25.00"	26.58"	5°49'23"	19°59'29"
17+25.00	25.00"	26.58"	5°49'23"	25°48'52"
17+50.00	25.00"	26.58"	5°49'22"	31°38'14"
17+75.00	25.00"	26.58"	5°49'23"	37°27'37"
18+00.00	25.00"	26.58"	5°49'22"	43°16'59"
18+07.08	7.08"	7.54"	1°38'57"	44°55'56"



**Baughman** Vassar Addition  
**LINE 1 & LINE 3**  
 Water Distribution System

Baughman Company, P.A. 315 Ellis St. Wichita, KS 67211 P 316-262-7271 F 316-262-0149  
 ENGINEERING | SURVEYING | PLANNING | LANDSCAPE ARCHITECTURE

PROJECT NUMBER: \_\_\_\_\_ DESIGN: AEG DRAWN: JAK  
 APPROVED: \_\_\_\_\_ DATE: 5/23/16

REVISIONS:  
 6/06/16 JAK  
 Line 1 @ 8" SWS Crossing

SCALE: Noted  
 SHEET: **6 OF 16**

E:\Projects\Vassar Addition\_1403P029\Engineering\Phase 1\Wtr\_1601E375\WTR PLANS.dwg