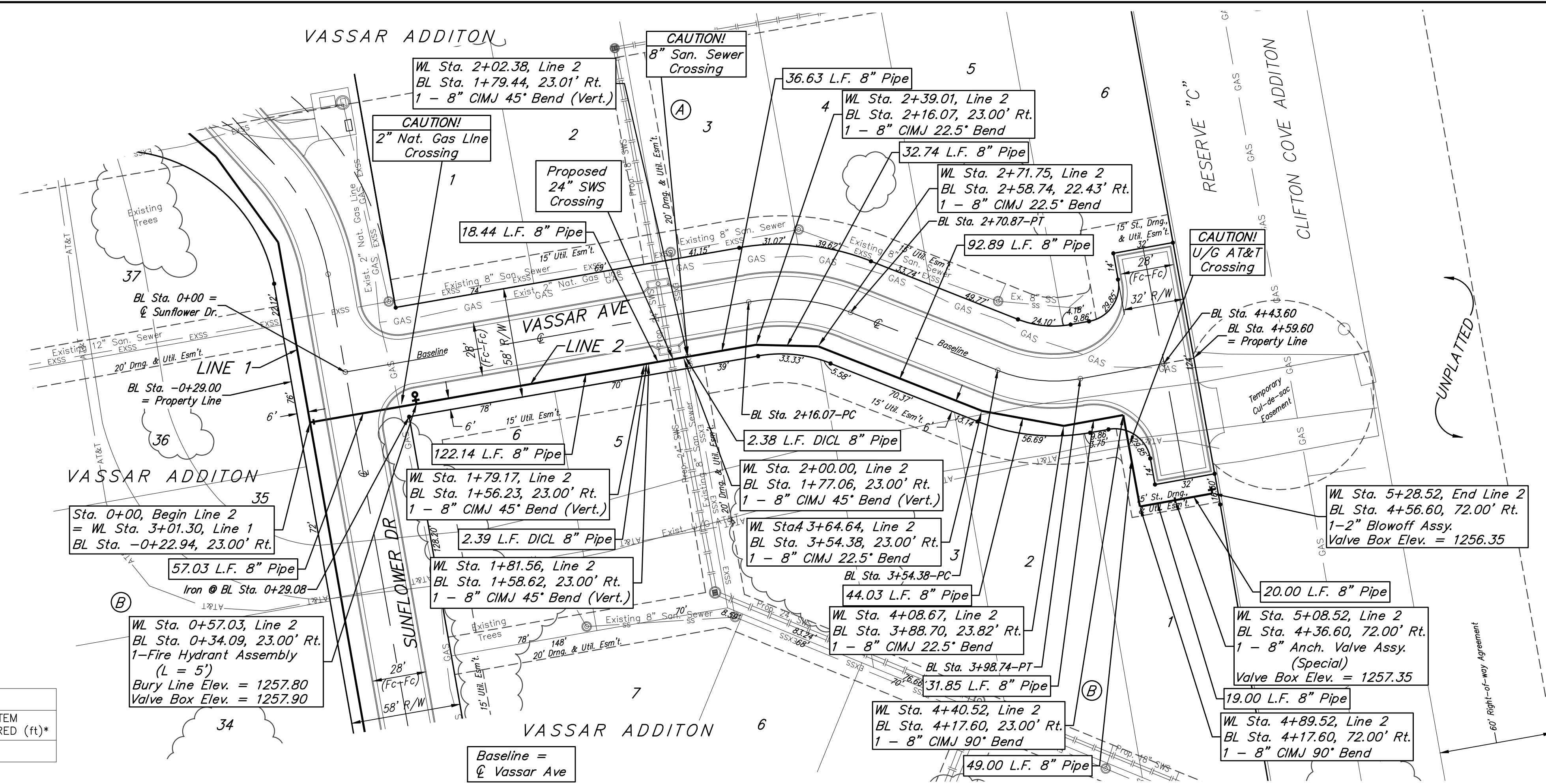
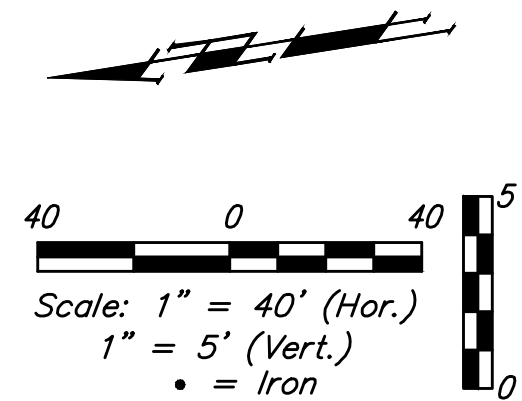


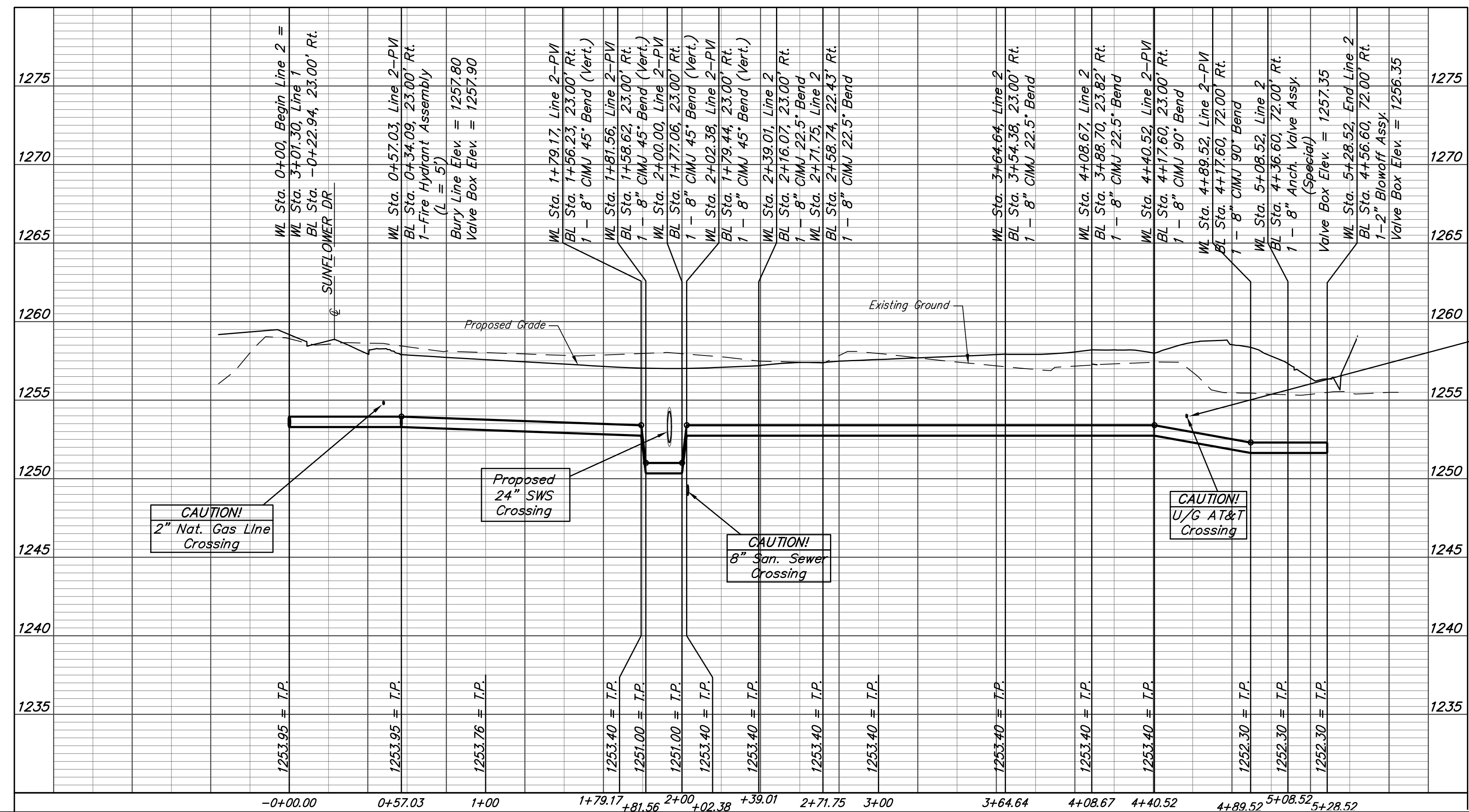
**BENCHMARKS:**  
 Chiseled square on top of catch basin, 43.5' N. & 20.4' W. of the northwest corner of Lot 24, Block B, Vassar Addition.  
 Elev. = 1259.55 NGVD29

Chiseled cross on top of catch basin, 48.2' N. & 41.2' W. of the northeast corner of Lot 37, Block B, Vassar Addition.  
 Elev. = 1258.46 NGVD29

Chiseled cross on walk, most easterly corner, (block corner), Lot 4, Block D, Clifton Cove Addition, 35.2' W. & 8.5' S. of the northwest corner, Lot 20, Block B, Vassar Addition.  
 Elev. = 1258.62 NGVD29



FIRE HYDRANTS REQUIRED				
STATION	BURY LINE ELEVATION	TOP OF PIPE ELEVATION	FIRE HYDRANT BURY REQUIRED*	VALVE STEM EXT. REQUIRED (ft)*
0+57.03	1257.80	1253.95	4.5'	-



Vassar Addition  
**LINE 2**  
Water Distribution System

Baughman Company, P.A. 315 Ellis St. Wichita, KS 67211 P 316-262-7271 F 316-262-0149  
ENGINEERING | SURVEYING | PLANNING | LANDSCAPE ARCHITECTURE

PROJECT NUMBER  REVISIONS:	DESIGN: AEG DRAWN: JAK APPROVED: DATE 5/23/16 SCALE: Noted SHEET:
----------------------------------	---

8 OF 16

E:\Projects\Vassar Addition\_1403P029\Engineering\Phase 1\Wtr\_1601E375\WTR PLANS.dwg

