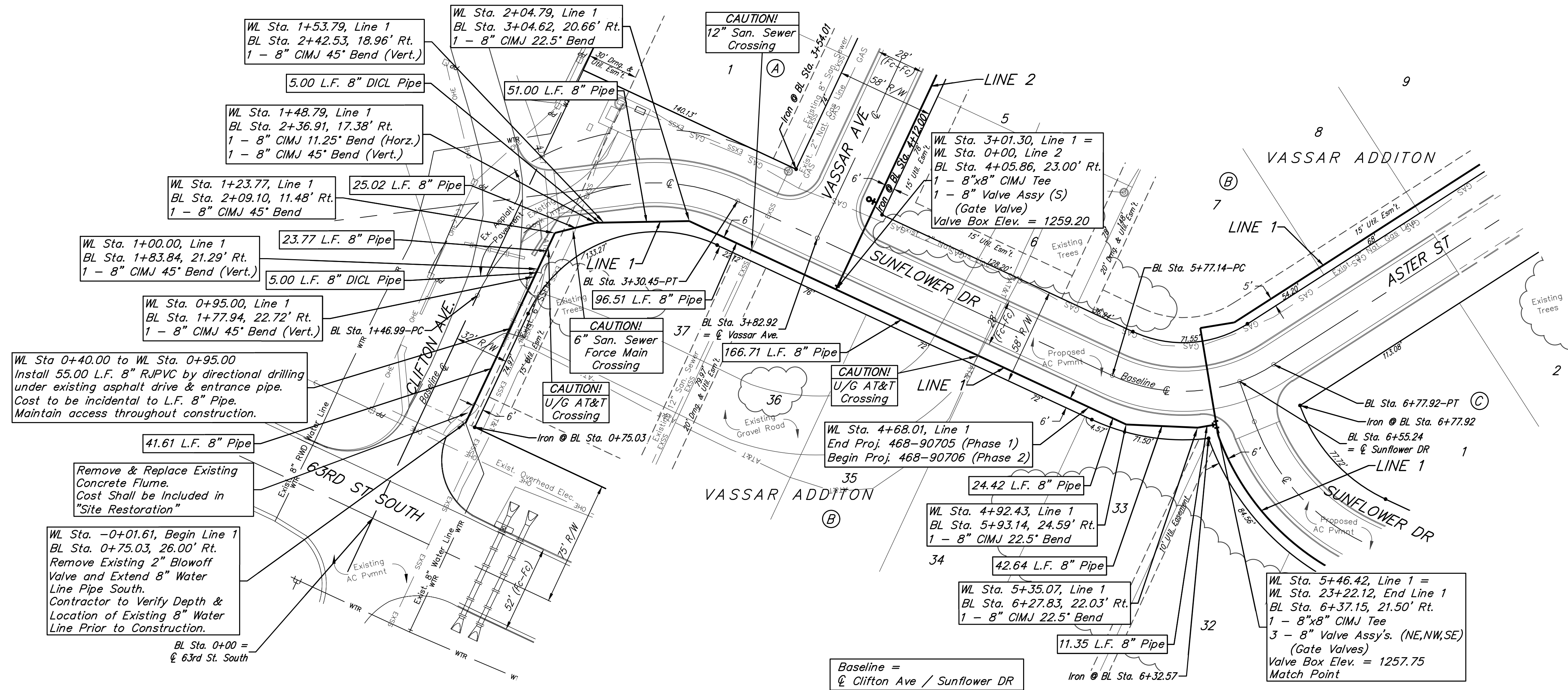


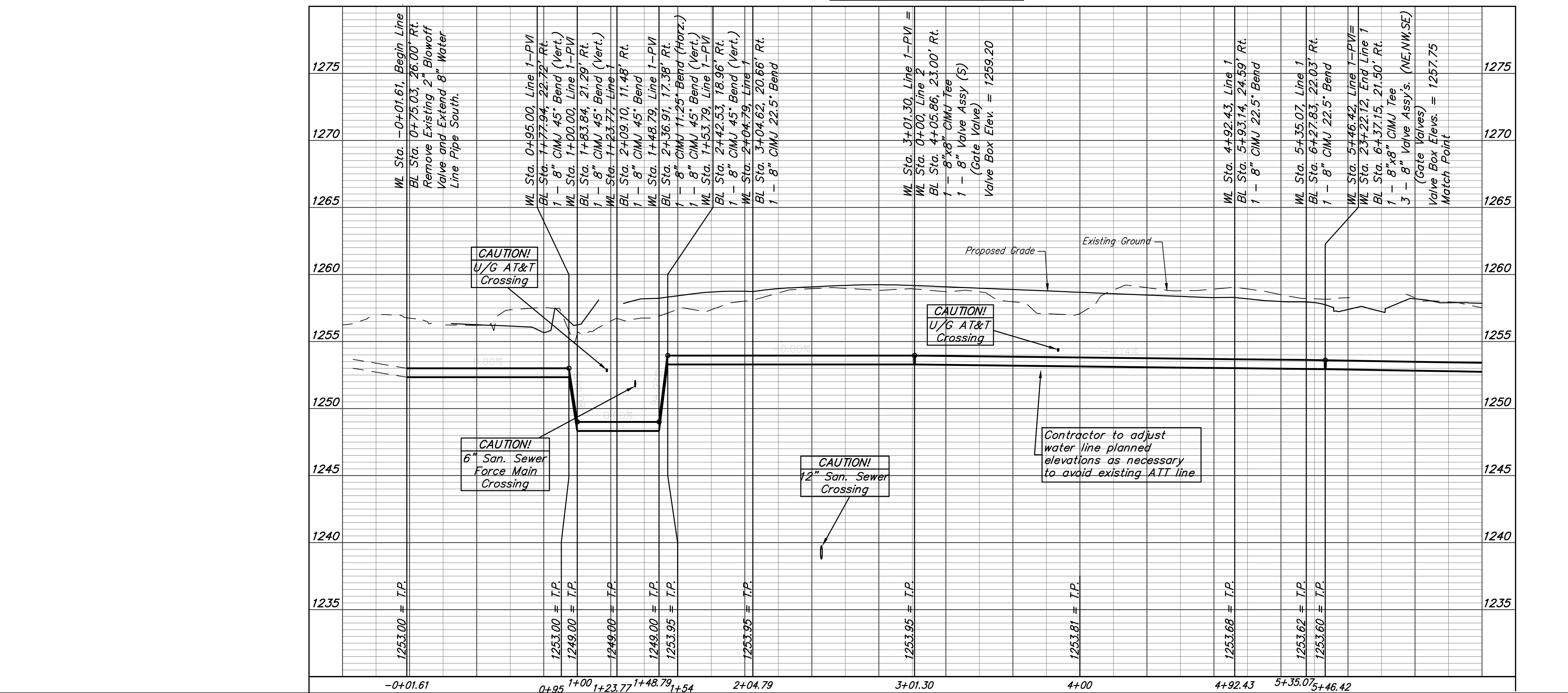
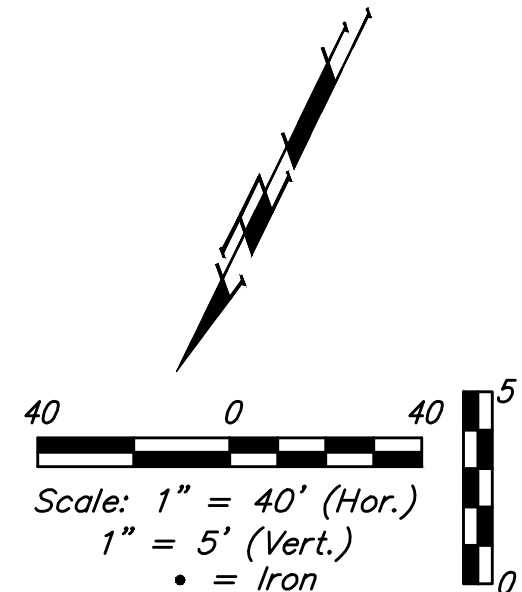
BENCHMARKS:
 Chiseled square on top of catch basin, 43.5' N. & 20.4' W. of the northwest corner of Lot 24, Block B, Vassar Addition.
 Elev. = 1259.55 NGVD29

Chiseled cross on top of catch basin, 48.2' N. & 41.2' W. of the northeast corner of Lot 37, Block B, Vassar Addition.
 Elev. = 1258.46 NGVD29

Chiseled cross on walk, most easterly corner, (block corner), Lot 4, Block D, Clifton Cove Addition, 35.2' W. & 8.5' S. of the northwest corner, Lot 20, Block B, Vassar Addition.
 Elev. = 1258.62 NGVD29



NOTE:
 The Contractor shall maintain access across construction areas on existing gravel road.



Baughman Vassar Addition
LINE 1
 Water Distribution System

Baughman Company, P.A. 315 Ellis St. Wichita, KS 67211 P 316-262-7271 F 316-262-0149
 ENGINEERING | SURVEYING | PLANNING | LANDSCAPE ARCHITECTURE

| | | |
|----------------|-------------|--------------|
| PROJECT NUMBER | DESIGN AEG | DRAWN JAK |
| REVISIONS: | APPROVED | DATE 5/23/16 |
| | SCALE Noted | SHEET |

4 OF 16

E:\Projects\Vassar Addition_1403P029\Engineering\Phase 1\Wtr_1601E375\WTR PLANS.dwg