

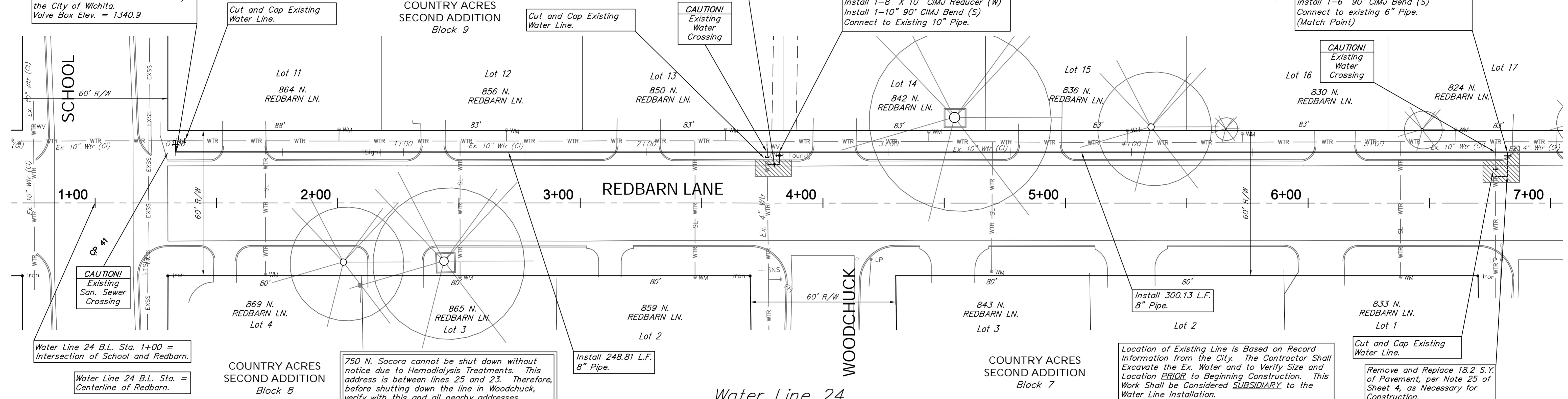
Sta. 0+06.00, Water Line 24 =
 B.L. Sta. 1+33.19, 21.0' Lt.
 Install 1-8" x 8" CIMJ Tee (NE)
 Install 1-8" CIMJ Plug (NW)
 Install 4.68 L.F. 8" DI CL Pipe (NE)
 Tap Ex. 10" Water Line.
 Install 1-10" x 8" Tapping Sleeve
 (E) & 8" Tapping Valve with Valve
 Box to be Furnished & Installed by
 the City of Wichita.
 Valve Box Elev. = 1340.9

Sta. 2+54.81, Water Line 24 =
 B.L. Sta. 3+82.00, 21.0' Lt.
 Install 1-8" x 8" CIMJ Tee (S)
 Install 1-8" Anchored Valve Assy. (S)
 Valve Box Elev. = 1340.8
 Install 5.00 L.F. 8" DI CL Pipe (S)
 Install 1-8" 90° CIMJ Bend (W)
 Install 4.94 L.F. 8" DI CL Pipe (W)
 Install 1-8" x 10" CIMJ Reducer (W)
 Install 1-10" 90° CIMJ Bend (S)
 Connect to Existing 10" Pipe.

Sta. 5+54.94, Water Line 24 =
 B.L. Sta. 6+82.14, 21.0' Lt.
 Install 1-8" x 8" CIMJ Tee (S)
 Install 1-8" Anchored Valve Assy. (S)
 Valve Box Elev. = 1341.0
 Install 1-8" x 6" CIMJ Reducer (S)
 Install 10.00 L.F. 6" DI CL Pipe (S)
 Install 1-6" 90° CIMJ Bend (W)
 Install 4.95 L.F. 6" DI CL Pipe (W)
 Install 1-6" 90° CIMJ Bend (S)
 Connect to existing 6" Pipe.
 (Match Point)



SCALE:
 HORIZONTAL: 1" = 20'
 VERTICAL: 1" = 5'



Water Line 24

