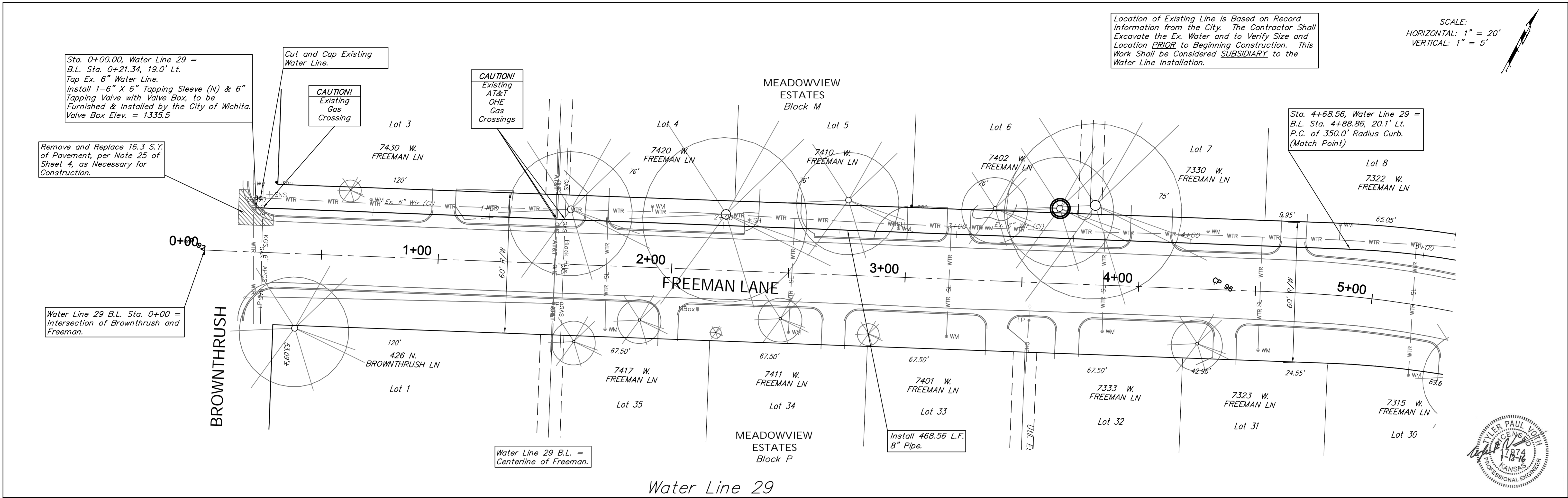
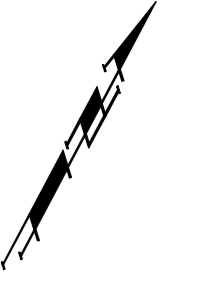
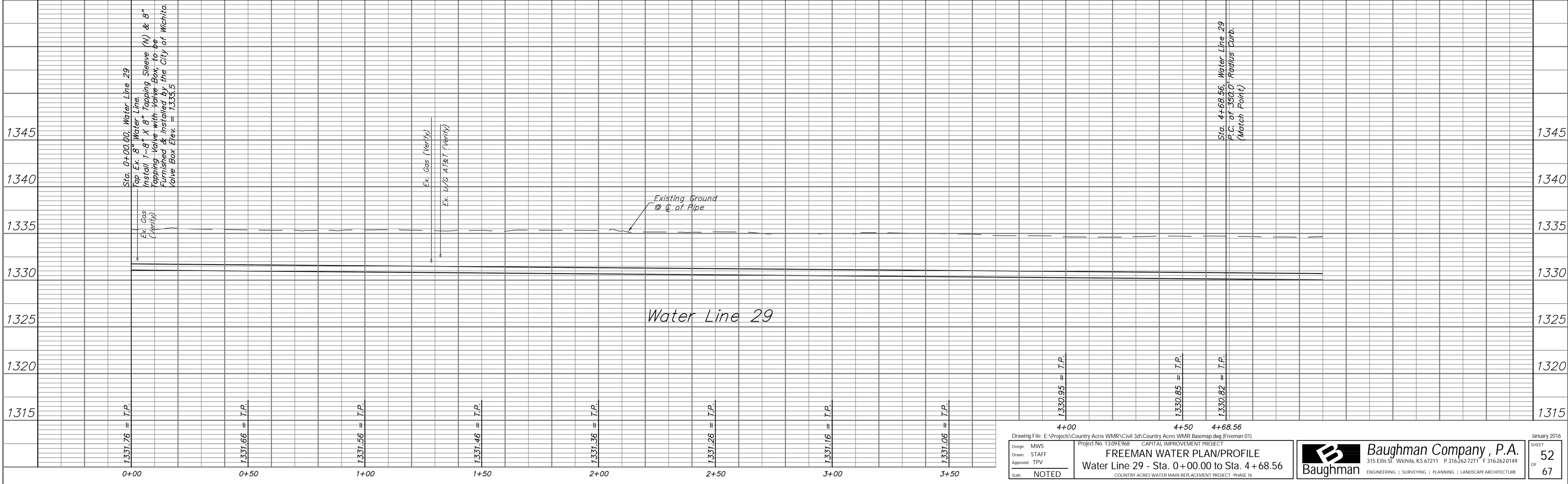


Location of Existing Line is Based on Record Information from the City. The Contractor Shall Excavate the Ex. Water and to Verify Size and Location PRIOR to Beginning Construction. This Work Shall be Considered SUBSIDIARY to the Water Line Installation.

SCALE:
HORIZONTAL: 1" = 20'
VERTICAL: 1" = 5'



Water Line 29



Drawing File: E:\Projects\Country Acres WMR\Civil 3d\Country Acres WMR Basemap.dwg (Freeman 01)
 Design: MWS
 Drawn: STAFF
 Approved: TPV
 Scale: NOTED

Project No. 1309E968 CAPITAL IMPROVEMENT PROJECT
FREEMAN WATER PLAN/PROFILE
 Water Line 29 - Sta. 0+00.00 to Sta. 4+68.56
 COUNTRY ACRES WATER MAIN REPLACEMENT PROJECT - PHASE 1b

Baughman Company, P.A.
 315 Ellis St., Wichita, KS 67211 P 316.262.7271 F 316.262.0149
 ENGINEERING | SURVEYING | PLANNING | LANDSCAPE ARCHITECTURE