

GENERAL NOTES:

- Contractor will be required to provide notice to utility companies a minimum of twenty-four (24) hours prior to any excavation, as follows.
 Kansas One Call 316-687-2470

The Contractor must notify the following in case of an emergency.

Westar Energy/	
Kansas Gas & Electric Company	800-482-4950
AT&T	1-555-1212
City of Wichita Water Department	316-268-4908
City of Wichita Sewer Department	316-268-4071
Kansas Gas Service (gas)	888-482-4950
Black Hills Energy (gas)	800-303-0357

- Existing utilities and their locations, as shown on the plans represent the best information attainable for design. Location information has been obtained from the various utility companies and is either from company record drawings or company-provided field locations. The Contractor will be required to work around existing utilities which do not conflict with proposed construction.

- Traffic affected by the construction of this project shall be handled in accordance with the latest edition of the Manual on Uniform Traffic Control Devices.

- The contractor to verify utility locations prior to construction of this project.

- Utility service and installation shall be coordinated with the respective utility owners.

Contacts are:

Westar Energy	Miles Capps	316-261-6251
Kansas Gas Service	Jim Coe	316-832-3126
Wichita Water & Sewer	Kerry Gibson	316-268-4555
AT&T	Jim Toben	316-268-2750
Cox Communications	Mark Anaya	316-262-4270
Black Hills Energy	Calvin Briggs	316-942-8811

- All lawn/turf areas disturbed by construction of proposed improvements shall be restored with the same grass as existing. Restoration of disturbed areas shall include, but not limited to; soil preparation, fertilizing, seeding, mulching (all seeded areas, outside the limits of erosion mat placement), and/or re-seeding, and installation of erosion control mat. All seeding work shall be in accordance with the City of Wichita Administrative Regulations No. AR 6.5 which governs cleanup and respiration or replacement following construction. All cost for the soil preparation, seeding and mulching (all seeded areas, outside the limits of erosion mat placement) shall be paid for by the contractor.

- It is the contractor's responsibility to visit the site to better understand the extent of the site clearing and restoration to be performed.

- The contractor shall be responsible for preserving property irons. The contractor will be required to re-establish any property irons which are damaged or destroyed by the construction operations. Such irons shall be re-established by a licensed land surveyor in accordance with state laws.

- Paved surfaces in public property will be repaired by the City's Contractor, and charges for the work shall go against the contractor doing the private project. Unit prices for repair can be obtained from the City by calling 268-4418 and could include a surcharge. Cost for repairs shall be paid in advance of release of the utility service if a utility is affected. For more information call 268-4418.

**PRIVATE FIRE LINE TO SERVE
 205. N. MATHEWSON
 LOT 4 MATHEWSON AVE. MATHEWSON 4TH ADD.
 1748 PPW
 CITY OF WICHITA, KANSAS
 GARY JANZEN, P.E., CITY ENGINEER**

BENCHMARK:

N.W. corner of concrete base of traffic light located on SW corner of Hydraulic and Douglas. 30.1 feet north, 65 feet west of intersection.
 Elevation 1296.78 NAVD 88

SHEET INDEX

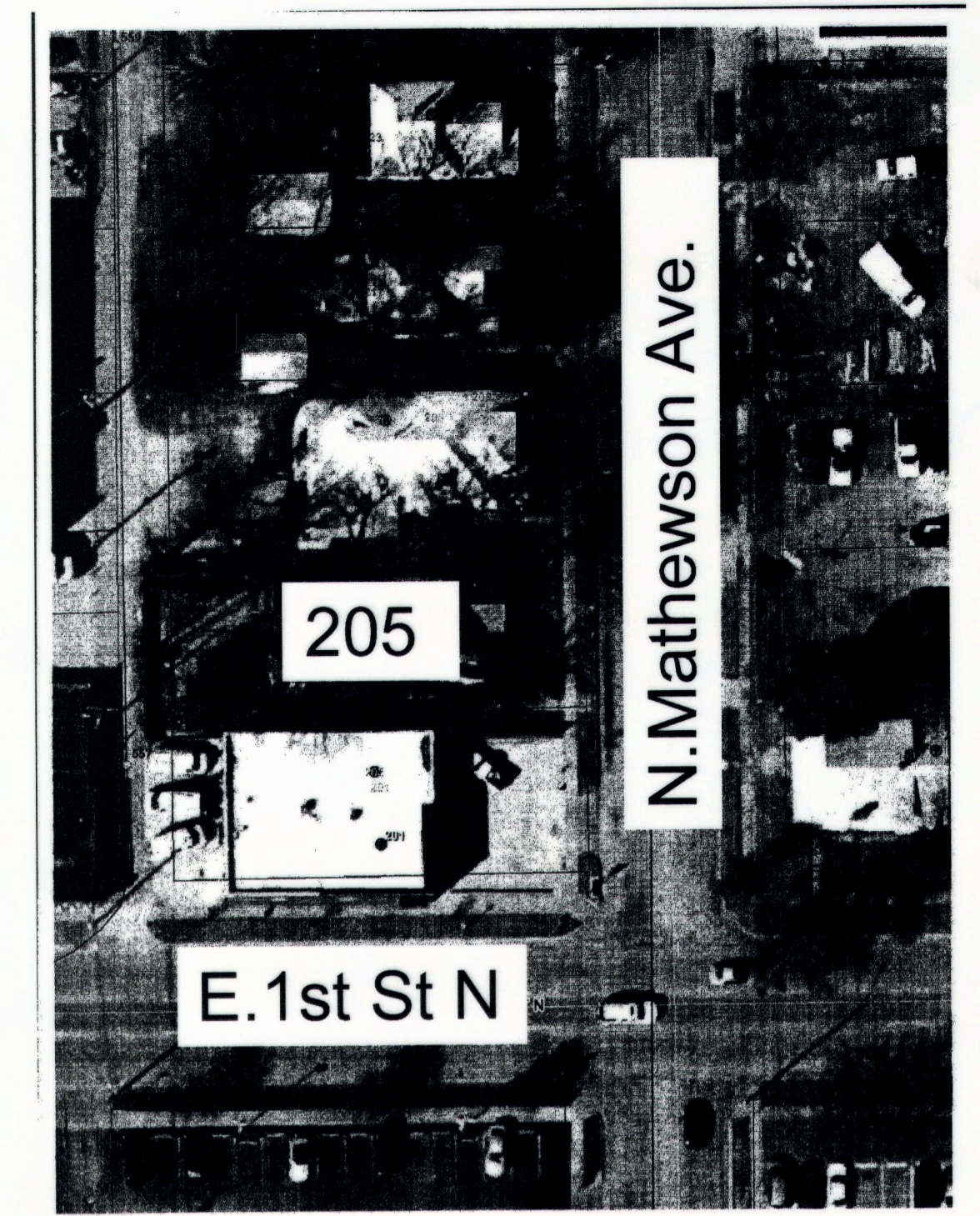
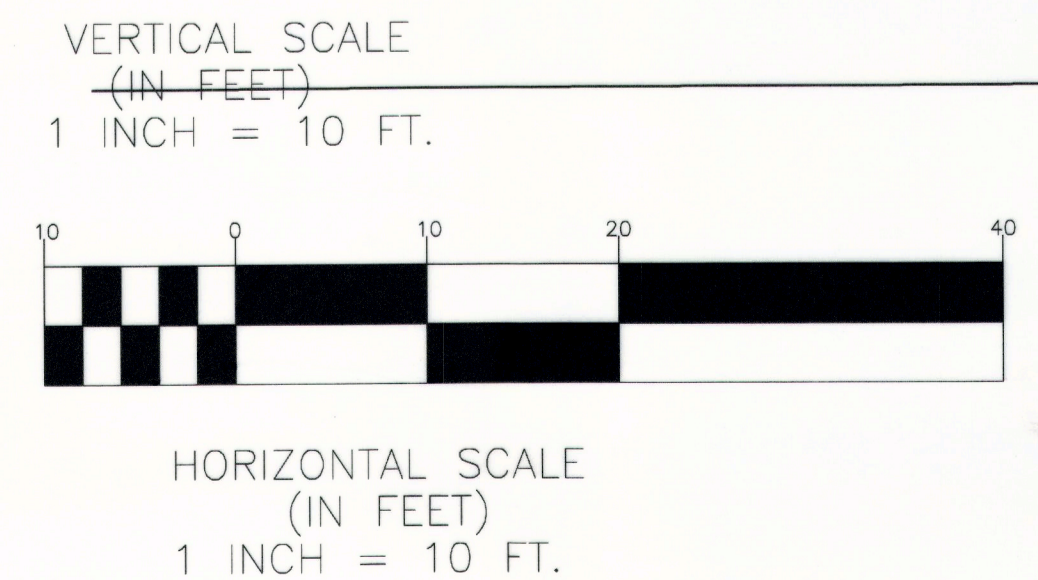
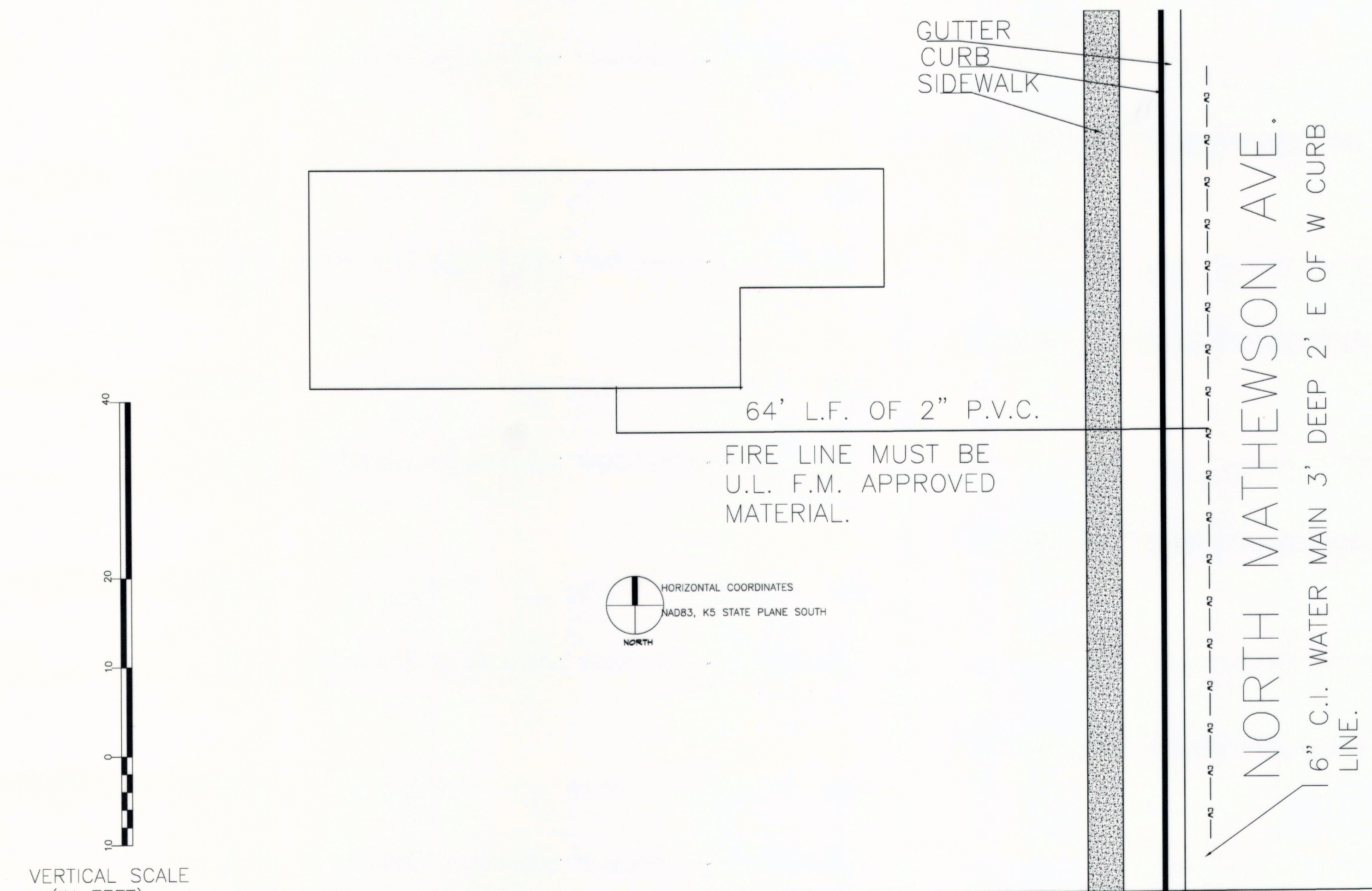
- 1.0 COVER SHEET
- 2.0 PLOT AND PROFILE

NOT A AS-BUILT PLAN

VB is 5' E of meter, meter is 3' West of BOC west curb on Mathewson & 65' N of BOC on 1st Street. VB is in curb, just in front of the face of curb on west side of Mathewson

PIPE LEGEND

— FIRE LINE
 — C.W. MAIN



Location Map
 (For Visual Use Only)

APPROVED AS NOTED
 BY CITY ENGINEER OF WICHITA
 BY WICHITA WATER & SEWER DEPARTMENT
 & BY WICHITA FIRE DEPARTMENT

Public Works *Jim Dvorak* 6/25/13
 Water & Sewer *Greg Zales* 7-22-13
 Fire *Robert W. Heilman* 7-01-2013

NOTE TO CONTRACTORS

PUBLIC PROPERTY

Inspection and testing of water line is to be provided by a Licensed Consulting Engineering Firm under contract with the Owner/Developer. Said inspection to be in accordance with the City of Wichita standard construction engineering practices and certified by a Professional Engineer Licensed in the State of Kansas. No work shall be performed in dedicated easements or public right of way by the Contractor without written authorization by the City Engineer. All Construction and Materials shall comply with the City of Wichita Specifications and Standards (on file and available in the City Engineer's Office.)

PRIVATE PROPERTY

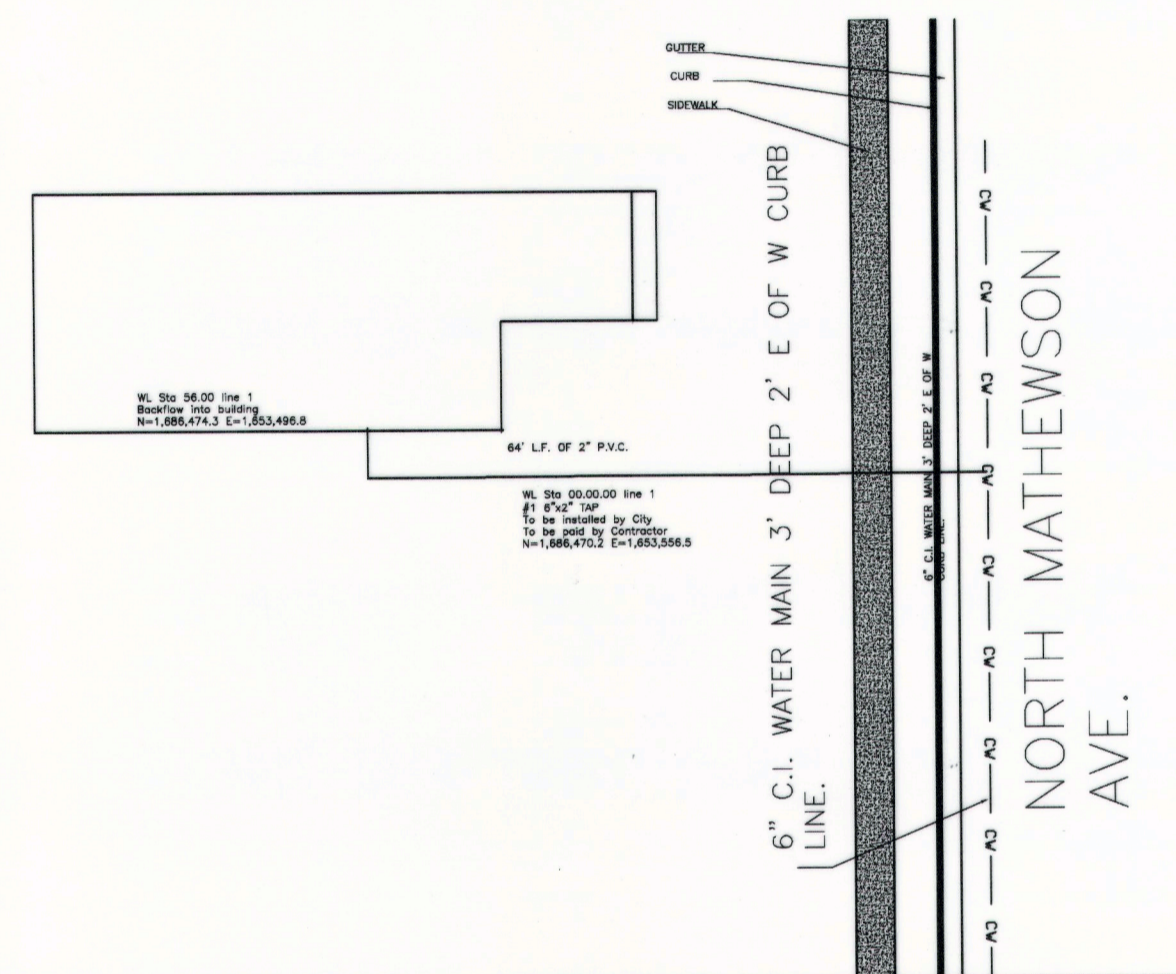
Installation and testing for the fire protection line is to be performed by a City of Wichita licensed and bonded contractor in accordance with the fire codes as adopted by the City of Wichita. All materials and construction practices for the fire protection line shall comply with the fire codes as adopted by the City of Wichita (available from the City of Wichita Fire Department). The Contractor shall not commence work without notification and approval of The Wichita Fire Department. Inspection of the fire protection line is to be provided by a Licensed Engineering Firm under contract with the Owner/Developer and the Fire Department. The contractor shall not start work until the project inspector is assigned to the project and present on site. Any work done without inspection will be required to be uncovered for inspection.

MECHANICAL CONCEPTS L.L.C.

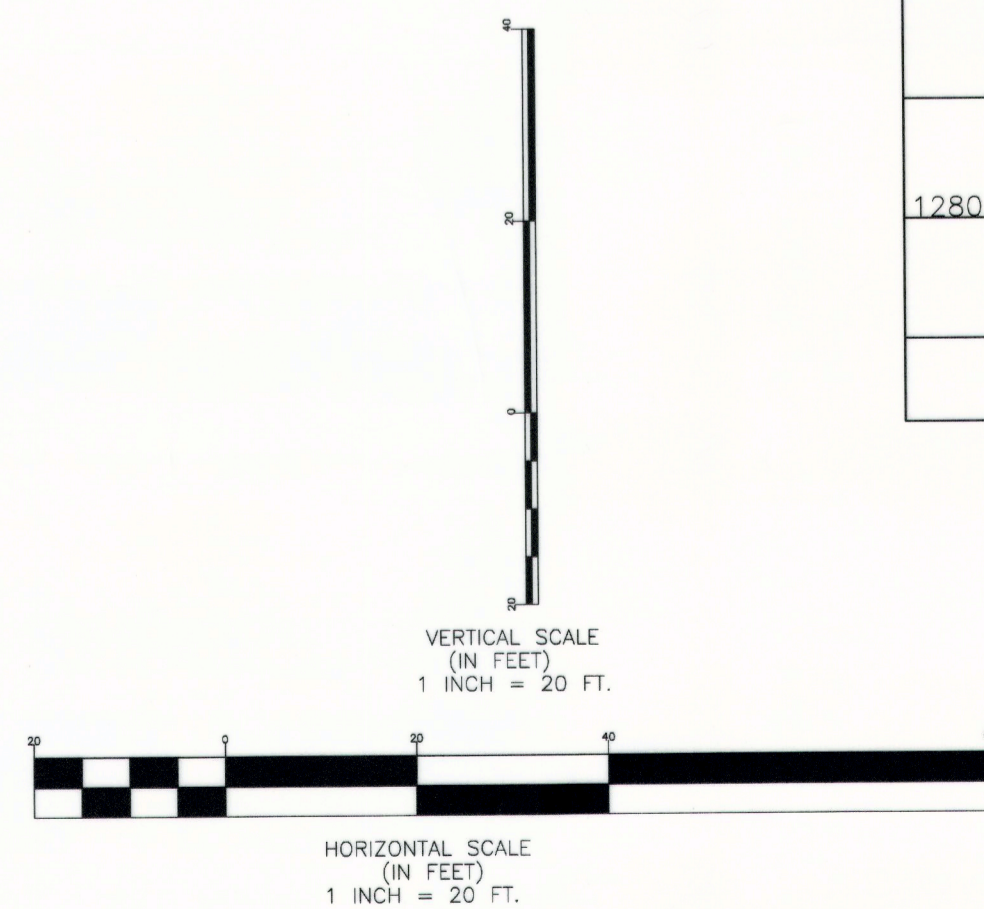
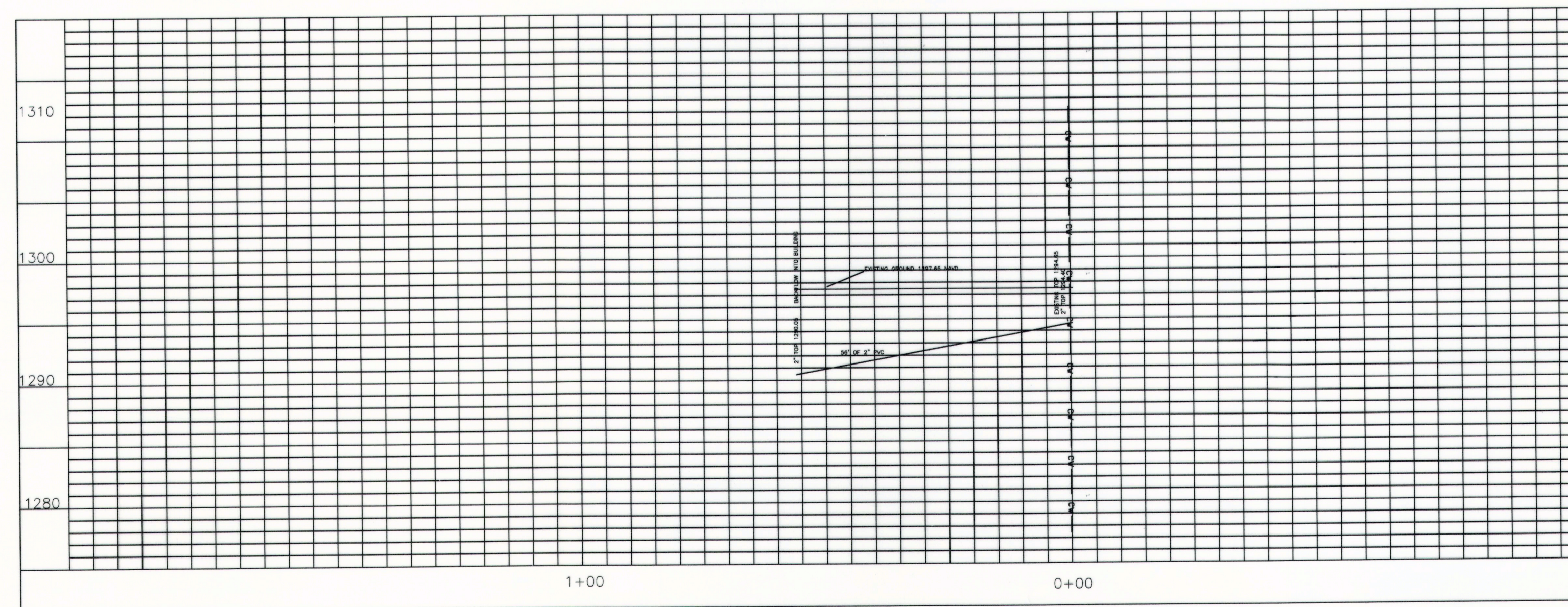
14801 TIMBERLAKE RD.
 WICHITA, KANSAS 67230
 PHONE 316-733-2718
 FAX 877-839-4680
 EMAIL
 RB@RICHARDBOWMAN.US



**PRIVATE FIRE LINE TO SERVE
205. N. MATHEWSON
LOT 4 MATHEWSON AVE. MATHEWSON 4TH ADD.
1748 PPW
CITY OF WICHITA, KANSAS
GARY JANZEN, P.E., CITY ENGINEER**



E. 1ST STREET NORTH



SCALE = 1" = 20'



MECHANICAL CONCEPTS L.L.C.

14801 TIMBERLAKE RD.
WICHITA, KANSAS 67230
PHONE 316-733-2718
FAX 877-839-4680
EMAIL
RB@RICHARDBOWMAN.US