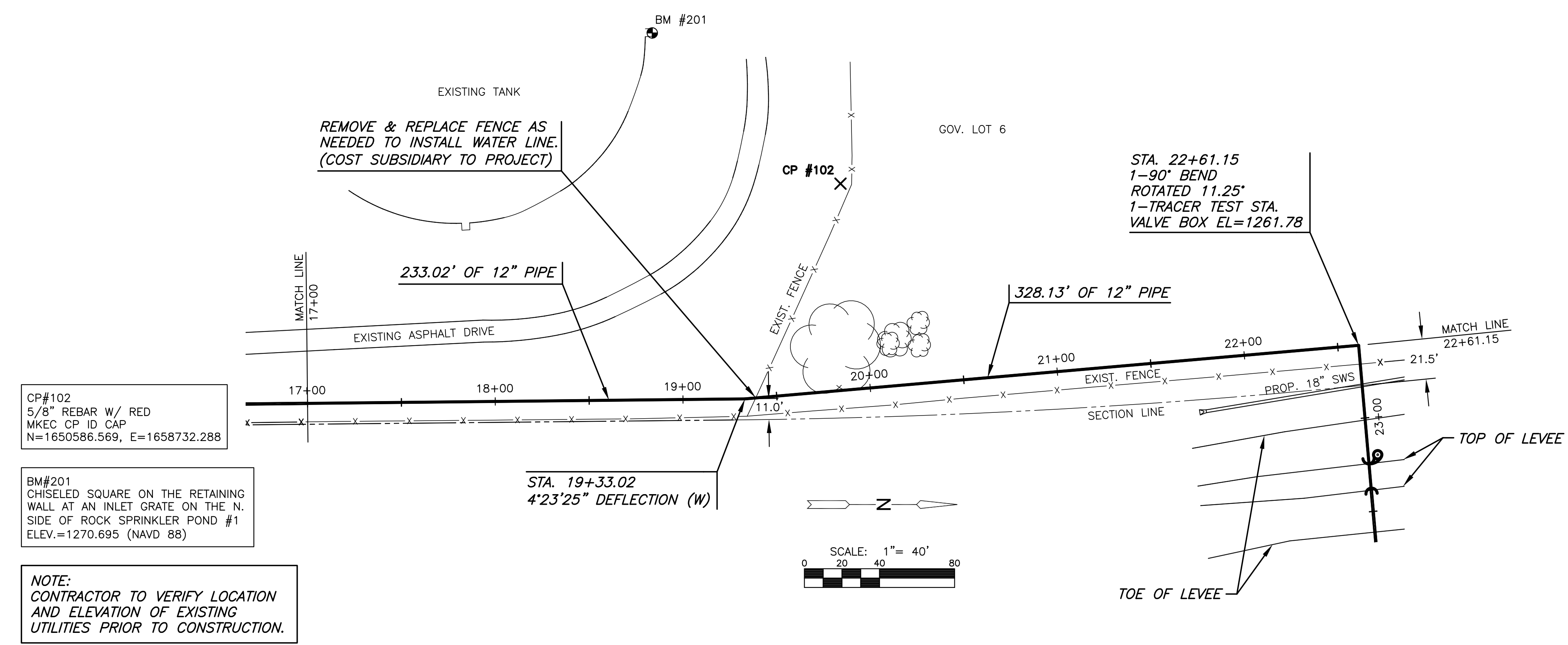


PLOTTED: Thursday, June 02, 2016 @ 10:51 AM

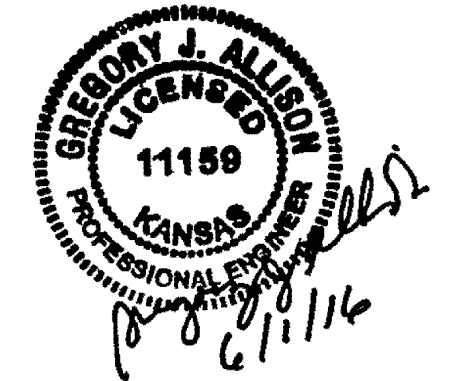
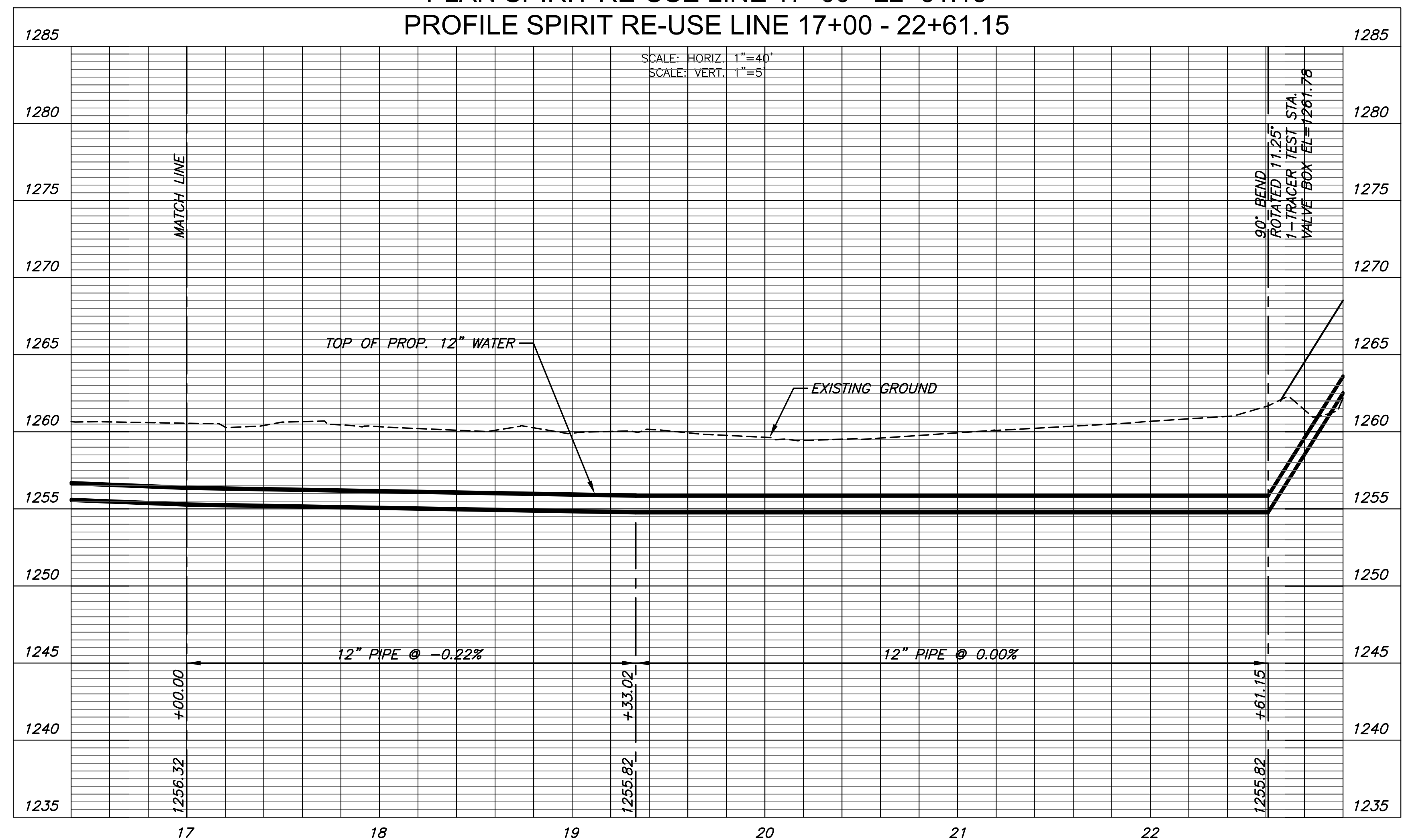
J:\PROJECTS\2015\1501010623_COW_REUSE_WATER_SUPPLY_SYSTEM\SYSTEM_150623_CAD\SHOTS\05_CIVIL\TR150623_CP-02.DWG



CITY OF WICHITA, KS
12" RE-USE WATER PIPELINE
 TO SERVE SPIRIT AEROSYSTEMS



PLAN SPIRIT RE-USE LINE 17+00 - 22+61.15
 PROFILE SPIRIT RE-USE LINE 17+00 - 22+61.15



©2016 MKEC Engineering All Rights Reserved
 www.mkec.com
 These drawings and their contents, including, but not limited to, all concepts, designs, & ideas are the exclusive property of MKEC Engineering (MKEC), and may not be used or reproduced in any way without the express consent of MKEC.

| | |
|--------------------------------------|------------|
| SPIRIT RE-USE LINE 17+00-22+61.15 | |
| PROJECT NO. | 468-85095 |
| DATE | APRIL 2016 |
| SCALE | 1" = 40' |
| DESIGNED | DRAWN |
| DFL | JWC |
| CHECKED | MAB |
| ISSUED FOR CONST. | 06/01/16 |
| NO. | REVISION |
| DATE | |
| SHEET NO. | |
| 06 OF 36 | |