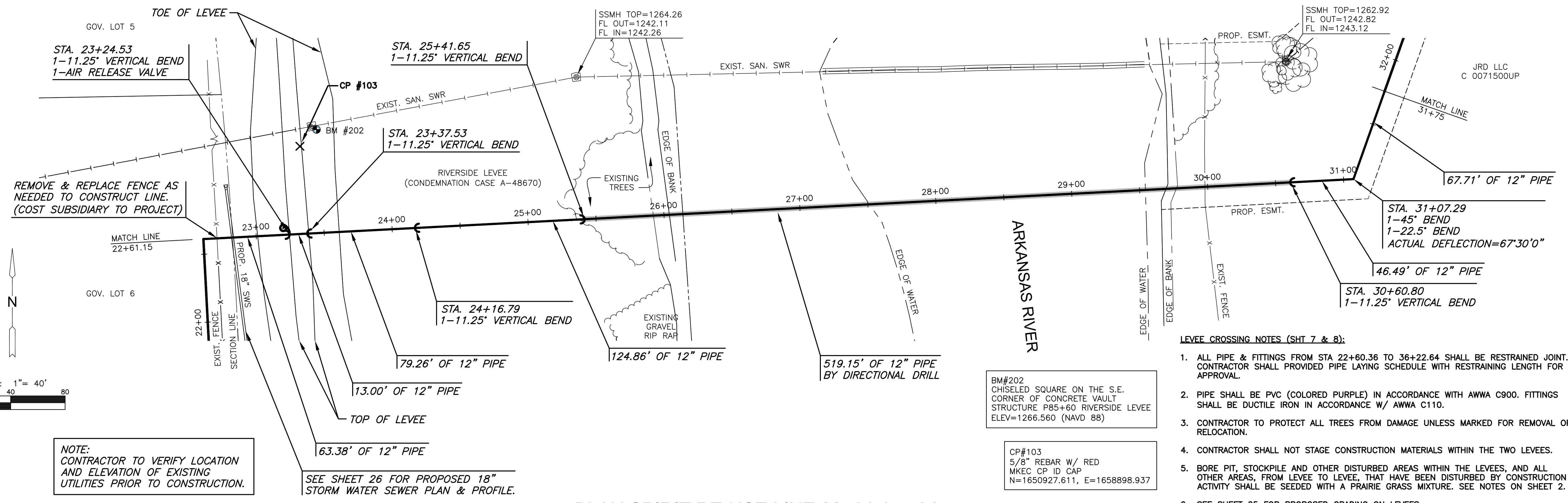


PLOTTED: Thursday, June 02, 2016 @ 10:55AM



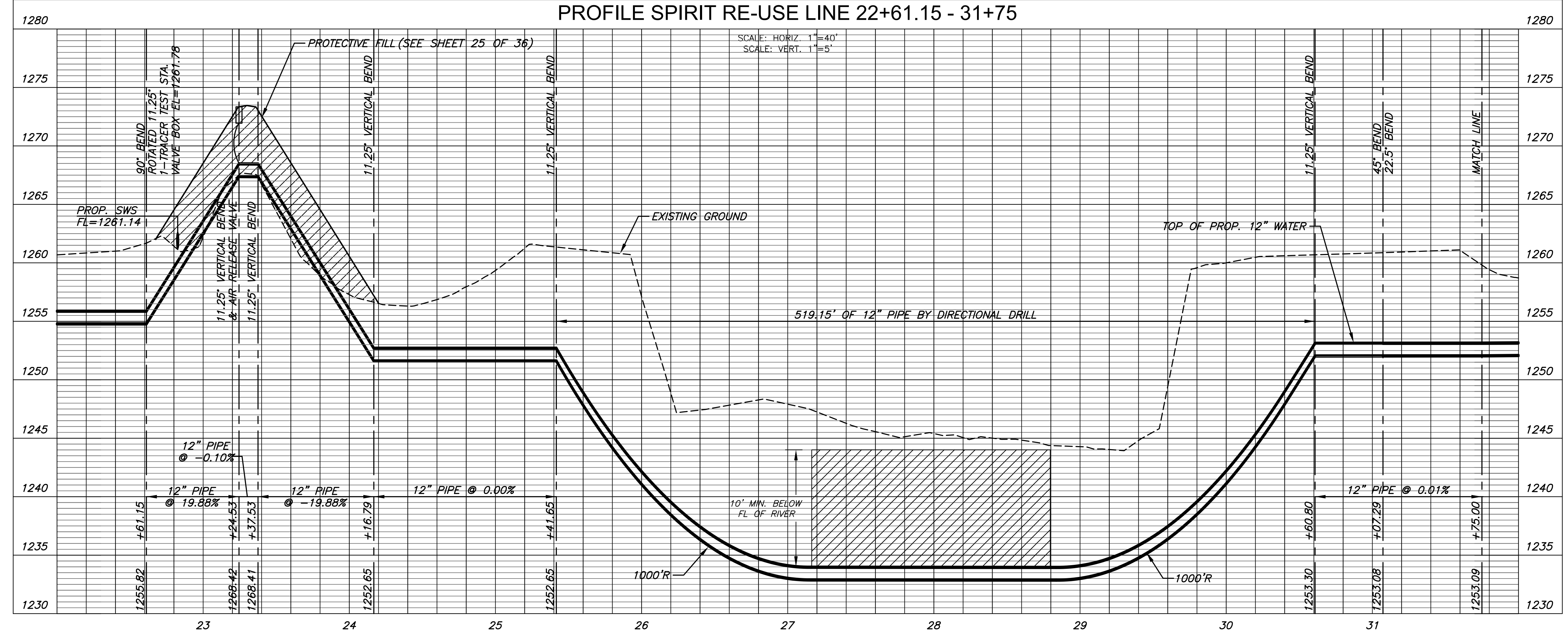
- LEVEE CROSSING NOTES (SHT 7 & 8):**
- ALL PIPE & FITTINGS FROM STA 22+60.36 TO 36+22.64 SHALL BE RESTRAINED JOINT. CONTRACTOR SHALL PROVIDED PIPE LAYING SCHEDULE WITH RESTRAINING LENGTH FOR APPROVAL.
 - PIPE SHALL BE PVC (COLORED PURPLE) IN ACCORDANCE WITH AWWA C900. FITTINGS SHALL BE DUCTILE IRON IN ACCORDANCE W/ AWWA C110.
 - CONTRACTOR TO PROTECT ALL TREES FROM DAMAGE UNLESS MARKED FOR REMOVAL OR RELOCATION.
 - CONTRACTOR SHALL NOT STAGE CONSTRUCTION MATERIALS WITHIN THE TWO LEVEES.
 - BORE PIT, STOCKPILE AND OTHER DISTURBED AREAS WITHIN THE LEVEES, AND ALL OTHER AREAS, FROM LEVEE TO LEVEE, THAT HAVE BEEN DISTURBED BY CONSTRUCTION ACTIVITY SHALL BE SEEDDED WITH A PRAIRIE GRASS MIXTURE. SEE NOTES ON SHEET 2.
 - SEE SHEET 25 FOR PROPOSED GRADING ON LEVEES.

NOTE:
CONTRACTOR TO VERIFY LOCATION AND ELEVATION OF EXISTING UTILITIES PRIOR TO CONSTRUCTION.

BM#202
CHISELED SQUARE ON THE S.E. CORNER OF CONCRETE VAULT STRUCTURE P85+60 RIVERSIDE LEVEE ELEV=1266.560 (NAVD 88)

CP#103
5/8" REBAR W/ RED MKEC CP ID CAP N=1650927.611, E=1658898.937

PLAN SPIRIT RE-USE LINE 22+61.15 - 31+75
PROFILE SPIRIT RE-USE LINE 22+61.15 - 31+75



CITY OF WICHITA, KS

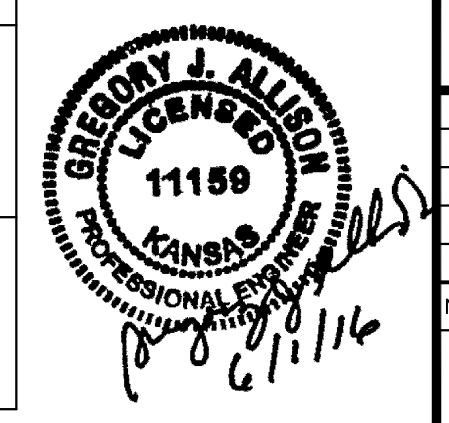
12" RE-USE WATER PIPELINE

TO SERVE SPIRIT AEROSYSTEMS

©2016 MKEC Engineering All Rights Reserved www.mkec.com
These drawings and their contents, including, but not limited to, all concepts, designs, & ideas are the exclusive property of MKEC Engineering (MKEC), and may not be used or reproduced in any way without the express consent of MKEC.

SPIRIT RE-USE LINE 22+61.15-31+75

PROJECT NO.	468-85095	
DATE	APRIL 2016	
SCALE	1" = 40'	
DESIGNED	DRAWN	CHECKED
DFL	JWC	MAB



ISSUED FOR CONST.	06/01/16	
NO.	REVISION	DATE

SHEET NO. 07 OF 36

J:\PROJECTS\2016\1601010623_COW_REUSE_WATER_SUPPLY_SYSTEM\SYSTEM_160623_CAD\SYSTEMS\CIVIL\WTR16022_CP-03.DWG