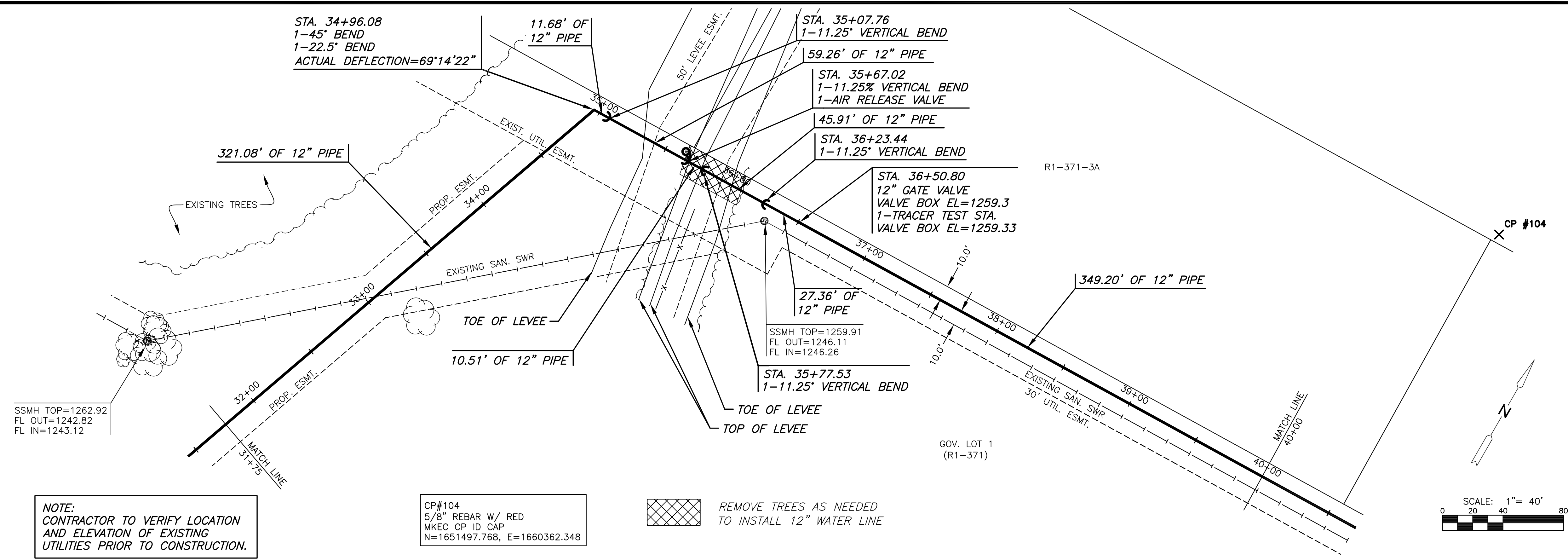


PLOTTED: Thursday, June 02, 2016 @ 10:58AM

J:\PROJECTS\01181501010623_COW_REUSE_WATER_SUPPLY_SYSTEM\SYSTEM_150623_CAD\SYSTEMS\CIVIL\TR11822_CP-04.DWG

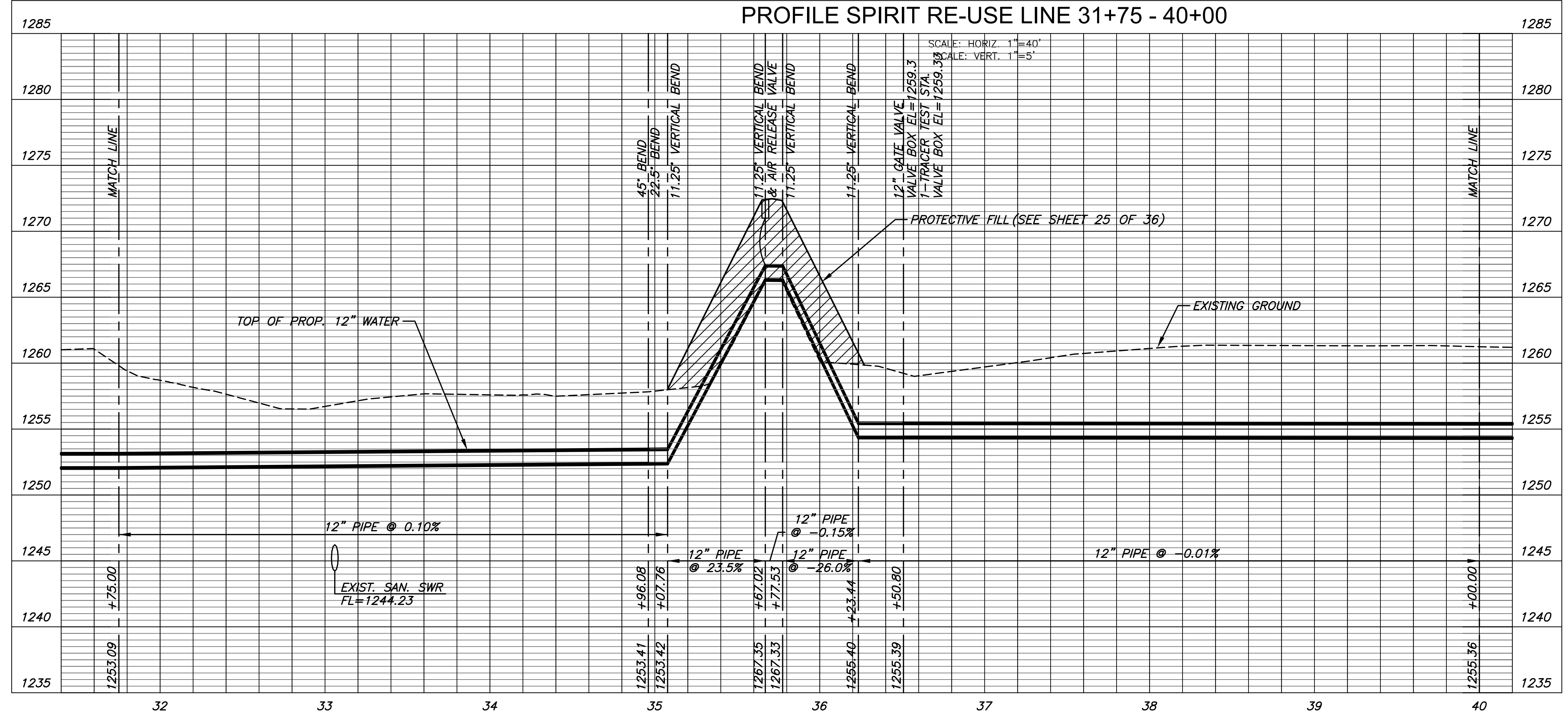


NOTE:
CONTRACTOR TO VERIFY LOCATION
AND ELEVATION OF EXISTING
UTILITIES PRIOR TO CONSTRUCTION.

CP#104
5/8" REBAR W/ RED
MKEC CP ID CAP
N=1651497.768, E=1660362.348

REMOVE TREES AS NEEDED
TO INSTALL 12" WATER LINE

PLAN SPIRIT RE-USE LINE 31+75 - 40+00
PROFILE SPIRIT RE-USE LINE 31+75 - 40+00



GREGORY J. ALLISON
LICENSED PROFESSIONAL ENGINEER
KANSAS
11159
6/1/16

©2016 MKEC Engineering
All Rights Reserved
www.mkec.com
These drawings and their contents, including, but not limited to, all concepts, designs, & lists are the exclusive property of MKEC Engineering (MKEC), and may not be used or reproduced in any way without the express consent of MKEC.

SPIRIT RE-USE LINE 31+75-40+00	
PROJECT NO.	468-85095
DATE	APRIL 2016
SCALE	1" = 40'
DESIGNED	DRAWN
DFL	JWC
CHECKED	MAB
NO.	REVISION
0	ISSUED FOR CONST.
NO.	REVISION
06/01/16	DATE
SHEET NO.	
08 OF 36	