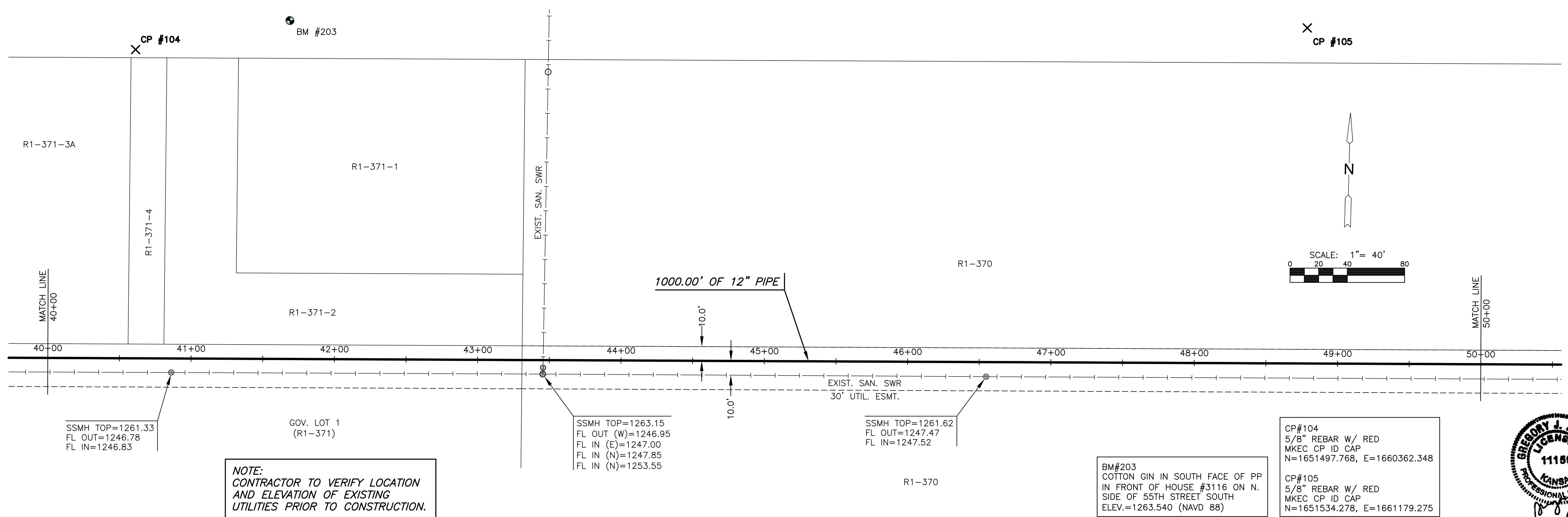


PLOT DATE: Thursday, June 02, 2016 @ 11:02AM

J:\PROJECTS\2016\16010623_COW_REUSE_WATER_SUPPLY_SYSTEM\SYSTEM_160623_CAD\SHOTS\05_CIVIL\WTR16023_CP-06.DWG



SSMH TOP=1261.33
FL OUT=1246.78
FL IN=1246.83

GOV. LOT 1
(R1-371)

SSMH TOP=1263.15
FL OUT (W)=1246.95
FL IN (E)=1247.00
FL IN (N)=1247.85
FL IN (N)=1253.55

SSMH TOP=1261.62
FL OUT=1247.47
FL IN=1247.52

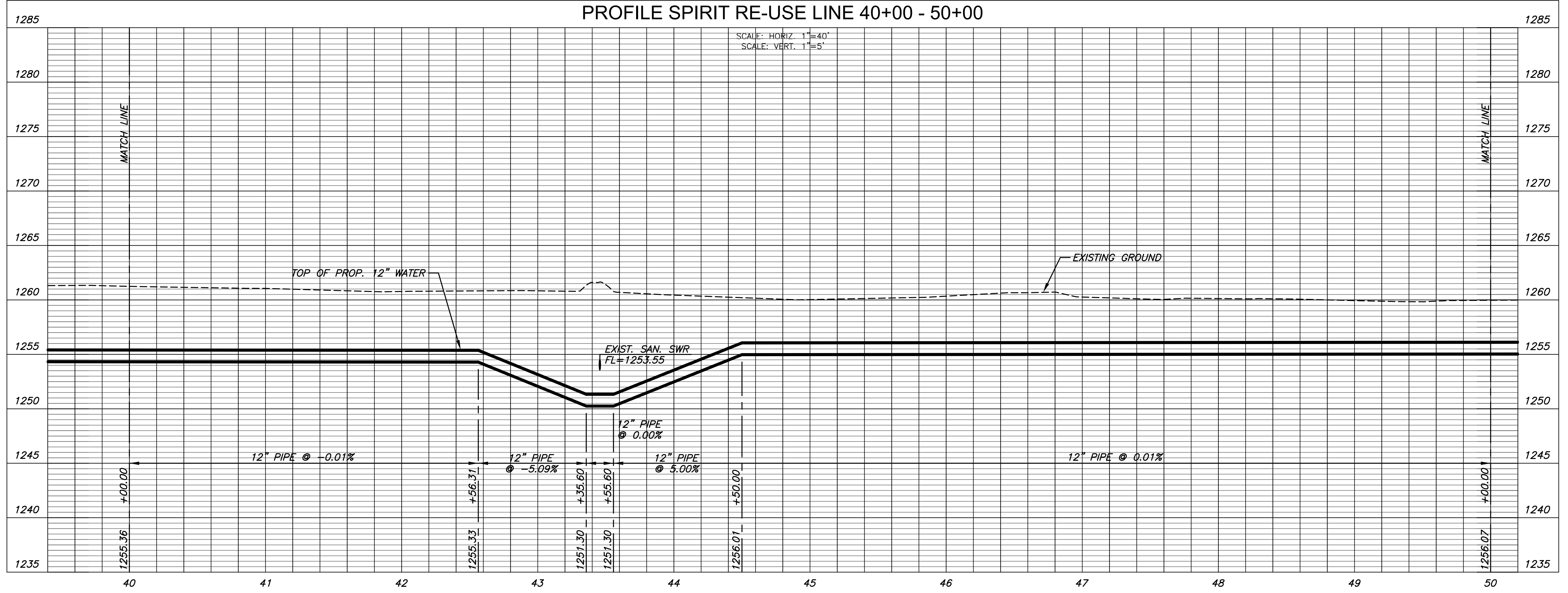
BM#203
COTTON GIN IN SOUTH FACE OF PP
IN FRONT OF HOUSE #3116 ON N.
SIDE OF 55TH STREET SOUTH
ELEV.=1263.540 (NAVD 88)

CP#104
5/8" REBAR W/ RED
MKEC CP ID CAP
N=1651497.768, E=1660362.348

CP#105
5/8" REBAR W/ RED
MKEC CP ID CAP
N=1651534.278, E=1661179.275



PLAN SPIRIT RE-USE LINE 40+00 - 50+00
PROFILE SPIRIT RE-USE LINE 40+00 - 50+00



CITY OF WICHITA, KS

12" RE-USE WATER PIPELINE

TO SERVE SPIRIT AEROSYSTEMS

©2016
MKEC Engineering
All Rights Reserved
www.mkec.com

These drawings and their contents, including, but not limited to, all concepts, designs, & ideas are the exclusive property of MKEC Engineering (MKEC), and may not be used or reproduced in any way without the express consent of MKEC.

SPIRIT
RE-USE LINE
40+00-50+00

PROJECT NO.	468-85095	
DATE	APRIL 2016	
SCALE	1" = 40'	
DESIGNED	DRAWN	CHECKED
DFL	JWC	MAB

ISSUED FOR CONST.	06/01/16	
NO.	REVISION	DATE

SHEET NO.
09 OF 36