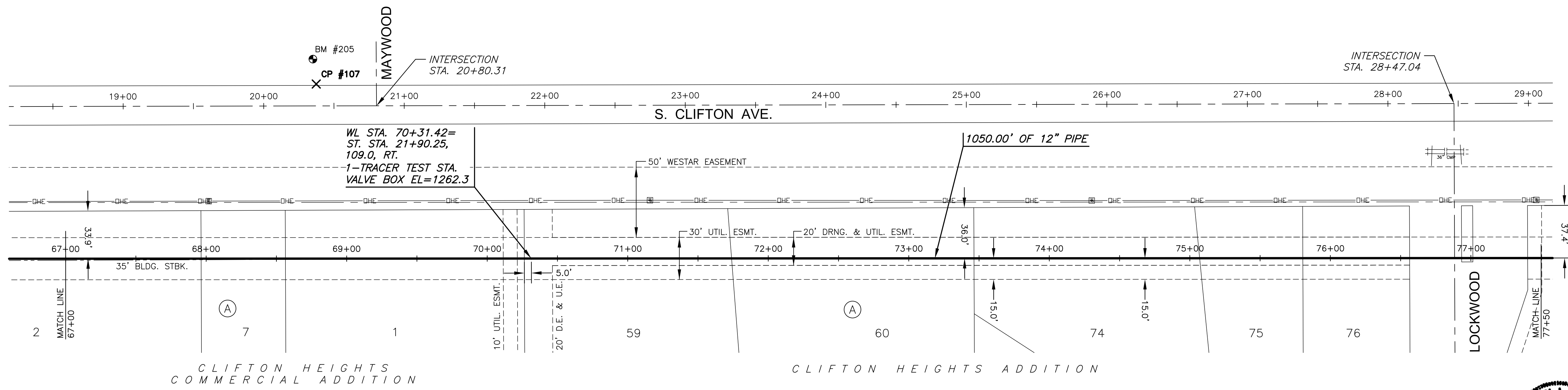
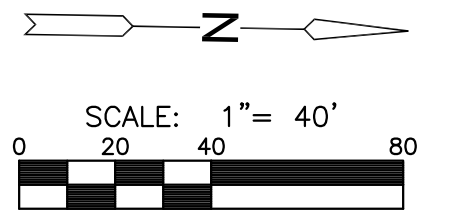


PLOTTED: Thursday, June 02, 2016 @ 11:13AM

J:\PROJECTS\2016\1501010623\_COW\_REUSE\_WATER\_SUPPLY\_SYSTEM\SYSTEM\_150623\_CAD\SHOTS\05\_CIVIL\TR115023\_CP-06.DWG

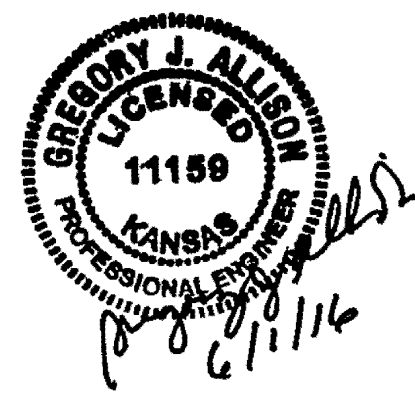


NOTE:  
CONTRACTOR TO VERIFY LOCATION  
AND ELEVATION OF EXISTING  
UTILITIES PRIOR TO CONSTRUCTION.

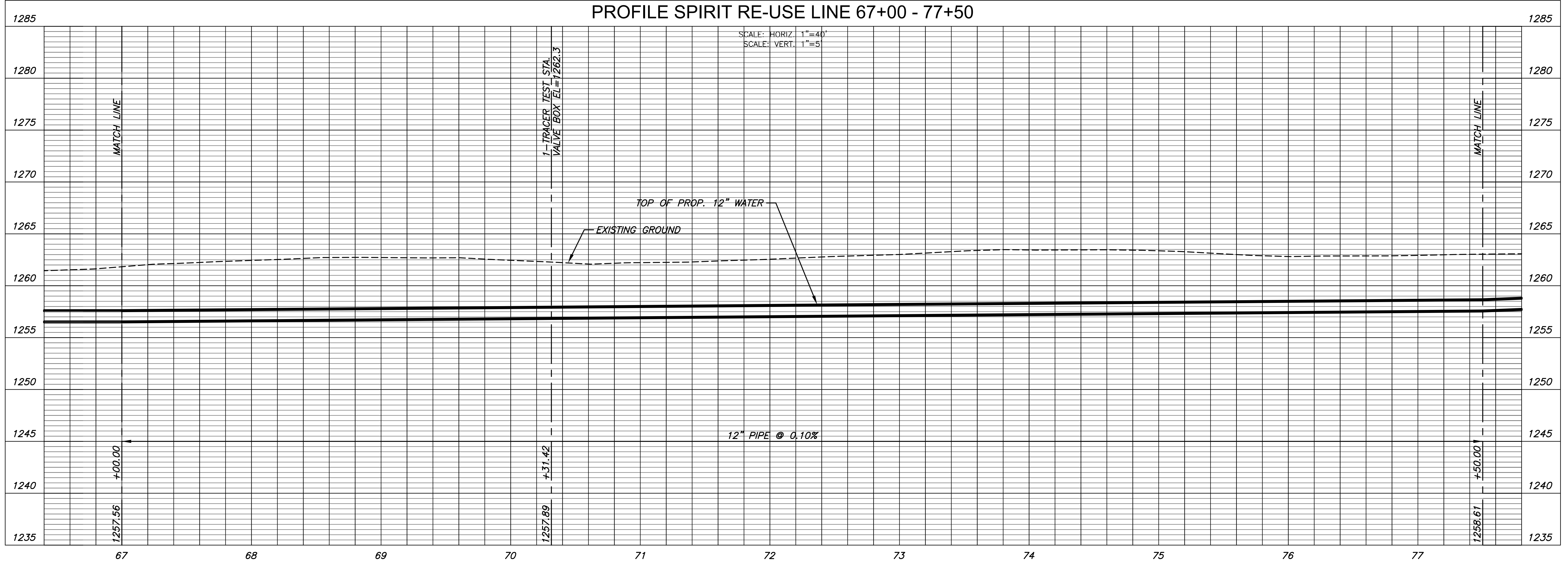


CP#107  
5/8" REBAR W/ RED  
MKEC CP ID CAP  
N=1652563.531, E=1661919.084

BM#205  
CHISELED SQUARE ON THE N.W.  
CORNER OF CONCRETE AT THE S.  
SIDE OF 36" RCP AT THE N.E.  
CORNER OF MEADOWLAKE BEACH  
ADDN. ELEV.=1264.020 (NAVD88)



PLAN SPIRIT RE-USE LINE 67+00 - 77+50  
PROFILE SPIRIT RE-USE LINE 67+00 - 77+50



CITY OF WICHITA, KS  
**12" RE-USE WATER PIPELINE**  
TO SERVE SPIRIT AEROSYSTEMS

©2016  
MKEC Engineering  
All Rights Reserved  
www.mkec.com  
These drawings and their contents,  
including, but not limited to, all concepts,  
designs, & ideas are the exclusive  
property of MKEC Engineering (MKEC),  
and may not be used or reproduced in any  
way without the express consent of MKEC.

SPIRIT RE-USE LINE 67+00-77+50	
PROJECT NO.	468-85095
DATE	APRIL 2016
SCALE	1" = 40'
DESIGNED	DRAWN
DFL	JWC
CHECKED	MAB
NO.	REVISION
0	ISSUED FOR CONST.
06/01/16	DATE
SHEET NO.	
12 OF 36	