

PLOTTED: Thursday, June 02, 2016 @ 11:46AM

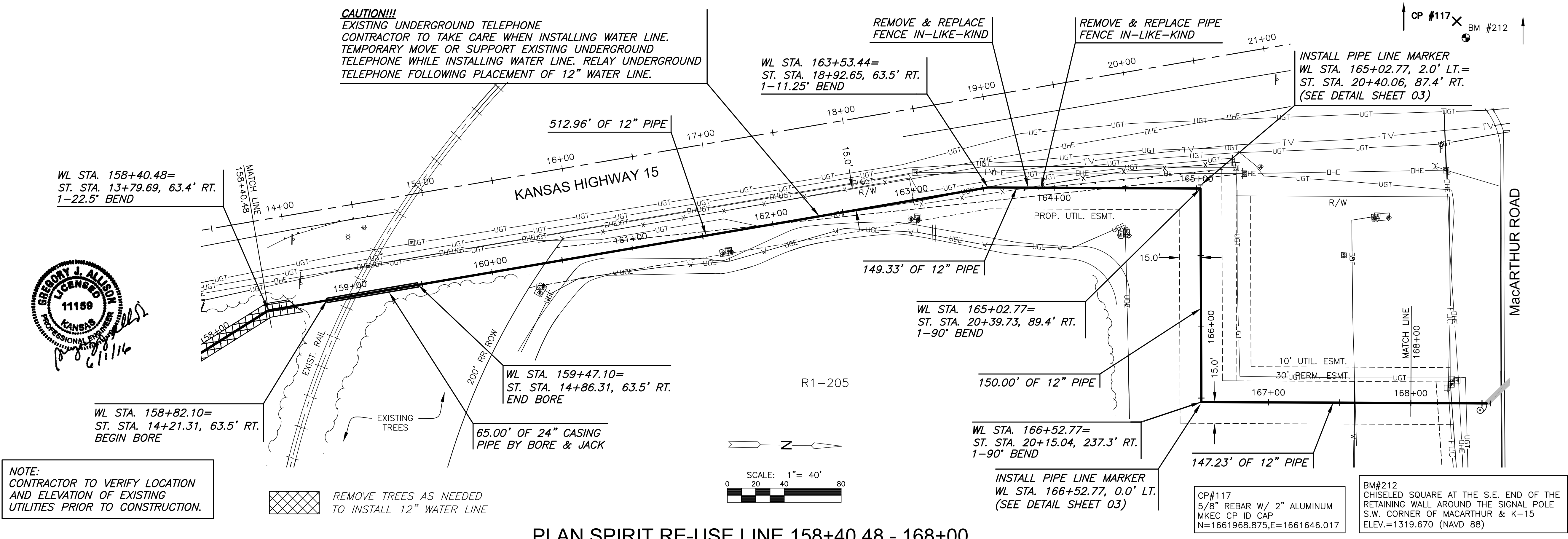
J:\PROJECTS\2016\1501010623_COW_REUSE_WATER_SUPPLY_SYSTEM\150623_CAD\SYSTEMS\CIVIL\TR15022_CP-17.DWG



CITY OF WICHITA, KS
12" RE-USE WATER PIPELINE
 TO SERVE SPIRIT AEROSYSTEMS

©2016 MKEC Engineering All Rights Reserved
 These drawings and their contents, including, but not limited to, all concepts, designs, & ideas are the exclusive property of MKEC Engineering (MKEC), and may not be used or reproduced in any way without the express consent of MKEC.

| | | |
|-------------------------------------|-------------------|----------|
| SPIRIT RE-USE LINE 158+40.48-168+00 | | |
| PROJECT NO. | 468-85095 | |
| DATE | APRIL 2016 | |
| SCALE | 1" = 40' | |
| DESIGNED | DRAWN | CHECKED |
| DFL | JWC | MAB |
| NO. | ISSUED FOR CONST. | 06/01/16 |
| | REVISION | DATE |
| SHEET NO. 21 OF 36 | | |



PLAN SPIRIT RE-USE LINE 158+40.48 - 168+00
 PROFILE SPIRIT RE-USE LINE 158+40.48 - 168+00

