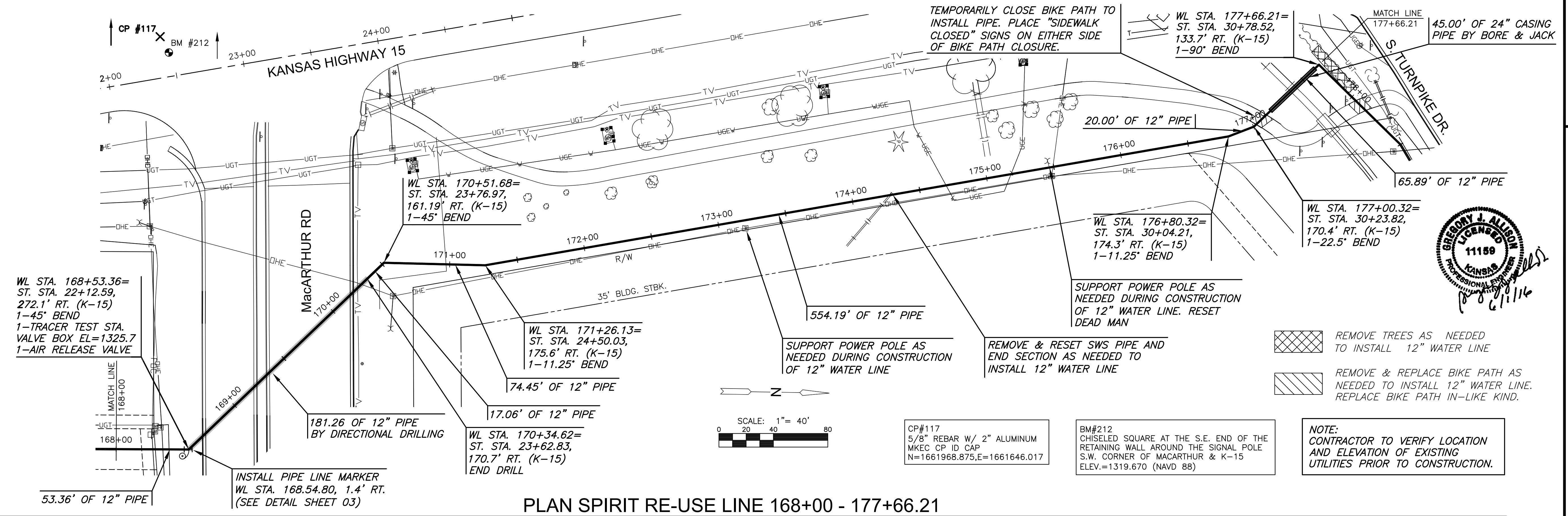
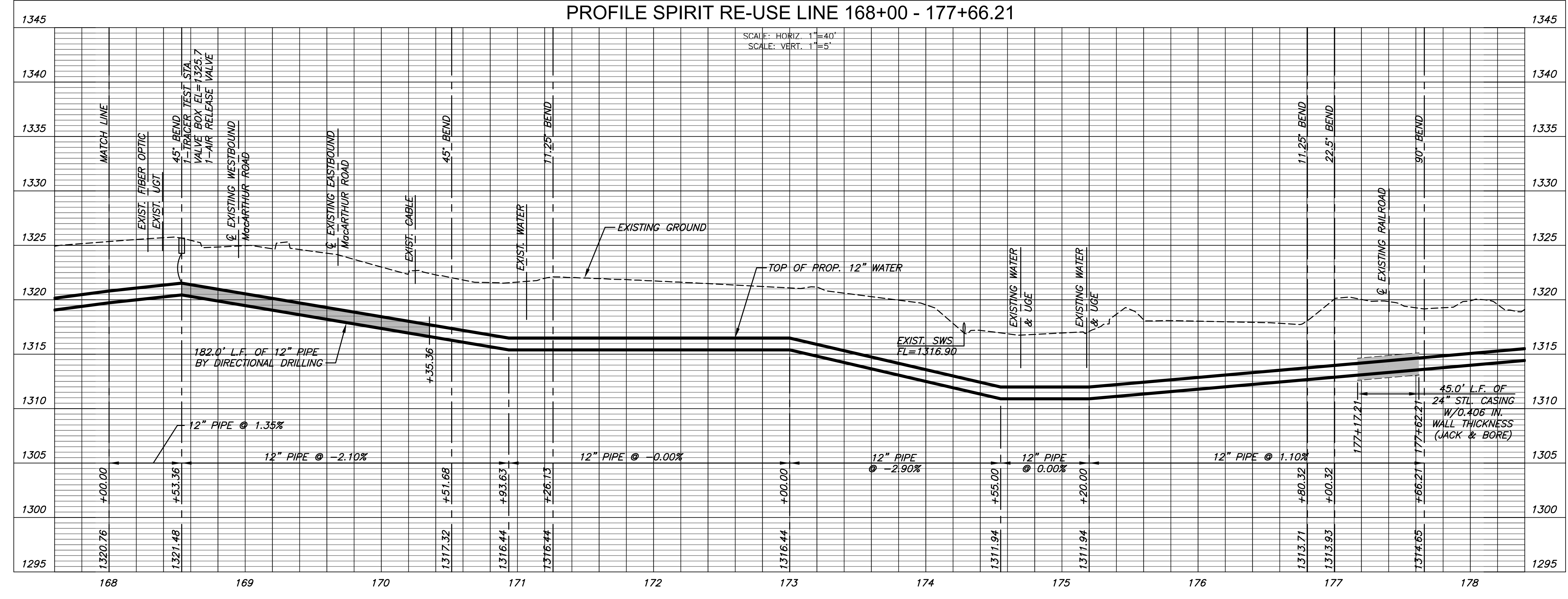


PLOTTED: Thursday, June 02, 2016 @ 11:51 AM



PLAN SPIRIT RE-USE LINE 168+00 - 177+66.21  
 PROFILE SPIRIT RE-USE LINE 168+00 - 177+66.21



- REMOVE TREES AS NEEDED TO INSTALL 12" WATER LINE
- REMOVE & REPLACE BIKE PATH AS NEEDED TO INSTALL 12" WATER LINE. REPLACE BIKE PATH IN-LIKE KIND.

NOTE:  
 CONTRACTOR TO VERIFY LOCATION AND ELEVATION OF EXISTING UTILITIES PRIOR TO CONSTRUCTION.



CP#117  
 5/8" REBAR W/ 2" ALUMINUM  
 MKEC CP ID CAP  
 N=1661968.875, E=1661646.017

BM#212  
 CHISELED SQUARE AT THE S.E. END OF THE  
 RETAINING WALL AROUND THE SIGNAL POLE  
 S.W. CORNER OF MACARTHUR & K-15  
 ELEV.=1319.670 (NAVD 88)



CITY OF WICHITA, KS  
**12" RE-USE WATER PIPELINE**  
 TO SERVE SPIRIT AEROSYSTEMS

©2016  
 MKEC Engineering  
 All Rights Reserved  
 www.mkec.com  
 These drawings and their contents, including, but not limited to, all concepts, designs, & ideas are the exclusive property of MKEC Engineering (MKEC), and may not be used or reproduced in any way without the express consent of MKEC.

<b>SPIRIT RE-USE LINE</b>	
168+00-177+66.21	
PROJECT NO.	468-85095
DATE	APRIL 2016
SCALE	1" = 40'
DESIGNED	DRAWN
DFL	JWC
CHECKED	MAB

ISSUED FOR CONST.	06/01/16
NO.	REVISION
	DATE

SHEET NO.  
 22 OF 36