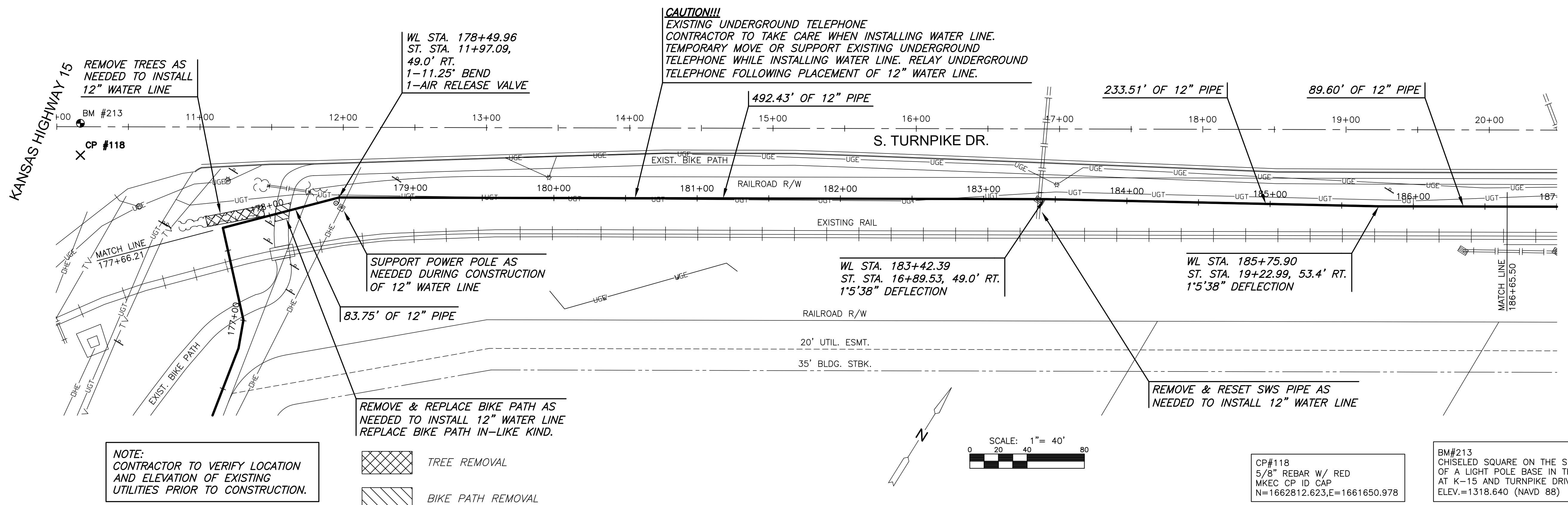


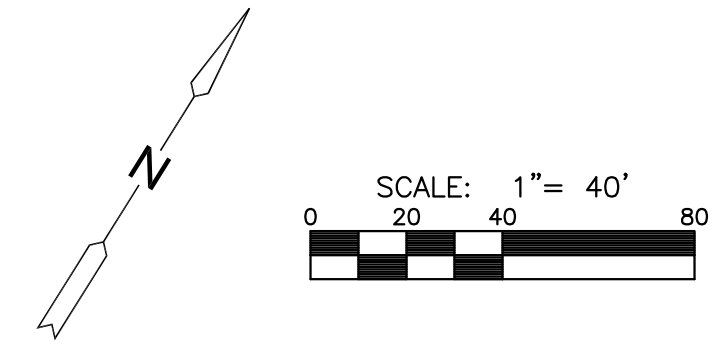
PLOTTED: Thursday, June 02, 2016 @ 11:54AM

J:\PROJECTS\2016\1501010623_COW_REUSE_WATER_SUPPLY_SYSTEM\SYSTEM_150623_CAD\SYSTEMS\CIVIL\TR15023_CP-10.DWG



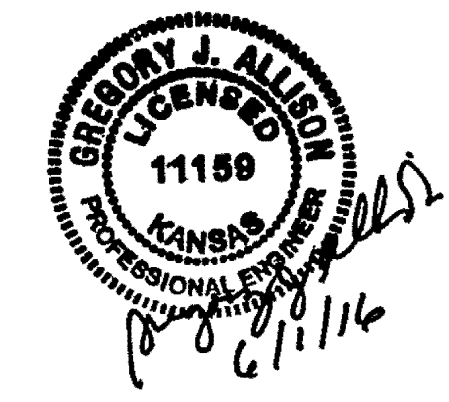
NOTE:
CONTRACTOR TO VERIFY LOCATION
AND ELEVATION OF EXISTING
UTILITIES PRIOR TO CONSTRUCTION.

TREE REMOVAL
 BIKE PATH REMOVAL

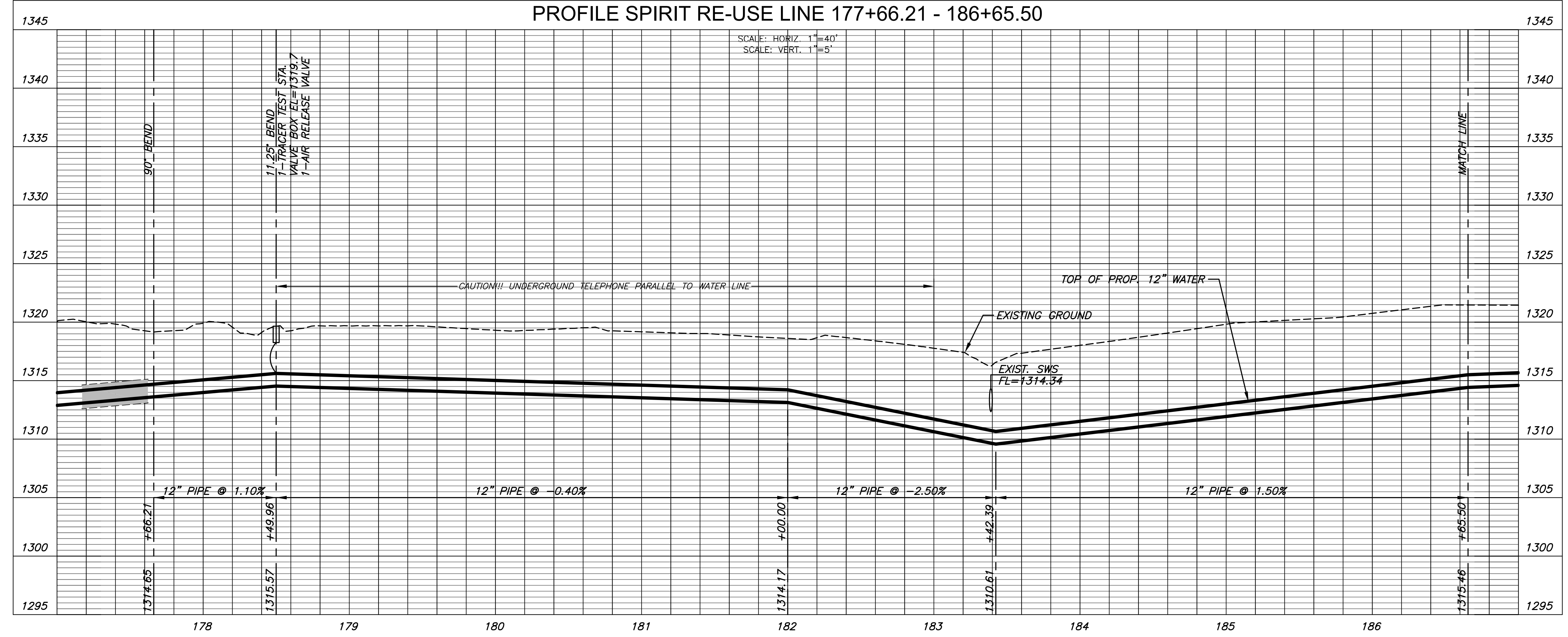


CP#118
5/8" REBAR W/ RED
MKEC CP ID CAP
N=1662812.623, E=1661650.978

BM#213
CHISELED SQUARE ON THE S.E. CORNER
OF A LIGHT POLE BASE IN THE ISLAND
AT K-15 AND TURNPIKE DRIVE.
ELEV.=1318.640 (NAVD 88)



PLAN SPIRIT RE-USE LINE 177+66.21 - 186+65.50
PROFILE SPIRIT RE-USE LINE 177+66.21 - 186+65.50



CITY OF WICHITA, KS
12" RE-USE WATER PIPELINE
TO SERVE SPIRIT AEROSYSTEMS

©2016
MKEC Engineering
All Rights Reserved
www.mkec.com
These drawings and their contents,
including, but not limited to, all concepts,
designs, & ideas are the exclusive
property of MKEC Engineering (MKEC),
and may not be used or reproduced in any
way without the express consent of MKEC.

SPIRIT RE-USE LINE 177+66.21-186+65.50	
PROJECT NO.	468-85095
DATE	APRIL 2016
SCALE	1" = 40'
DESIGNED	DRAWN
DFL	JWC
CHECKED	MAB

0	ISSUED FOR CONST.	06/01/16
NO.	REVISION	DATE

SHEET NO.
23 OF 36