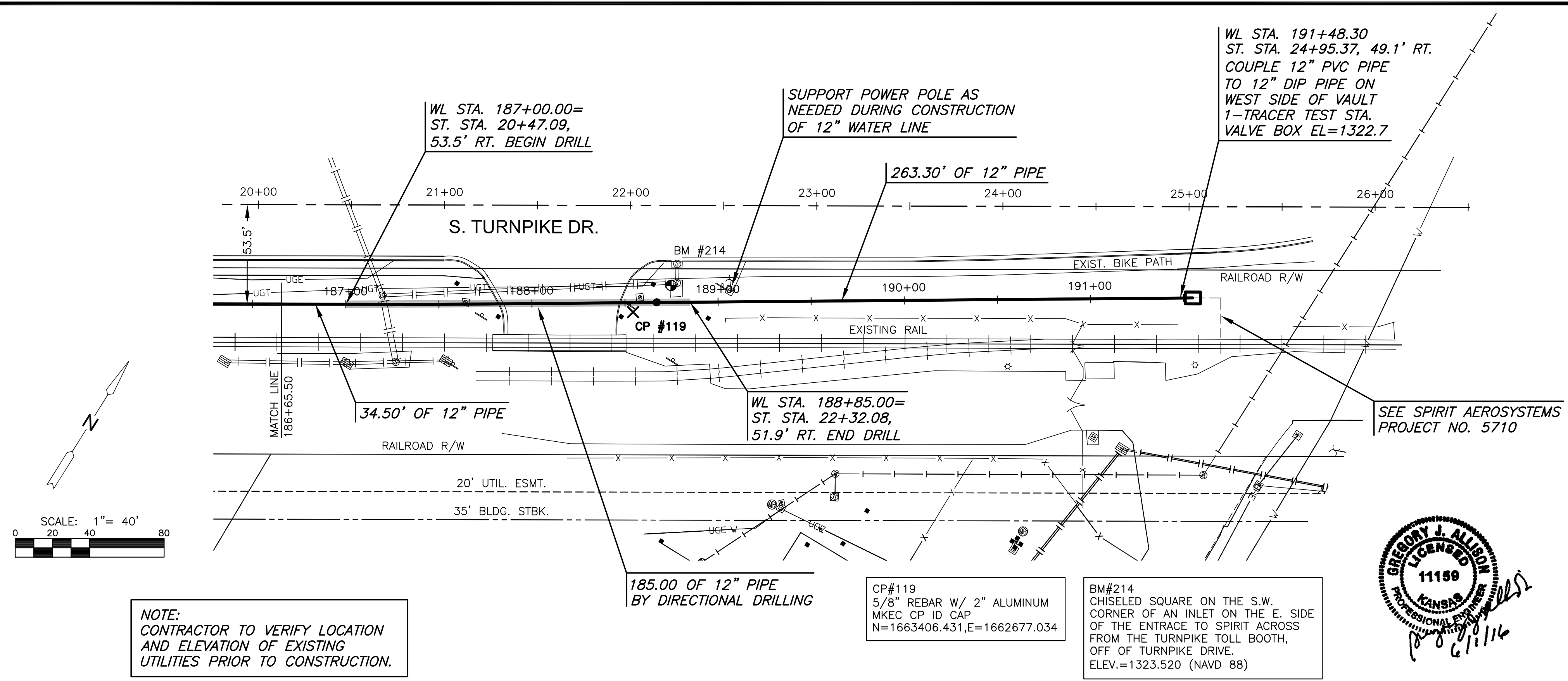


PLOTTED: Thursday, June 02, 2016 @ 11:57AM

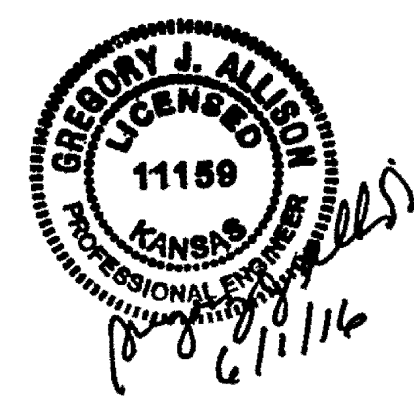
J:\PROJECTS\2016\16010623\_COW\_REUSE\_WATER\_SUPPLY\_SYSTEM\160623\_CAD\SYSTEMS\CIVIL\WTR16023\_CP-20.DWG



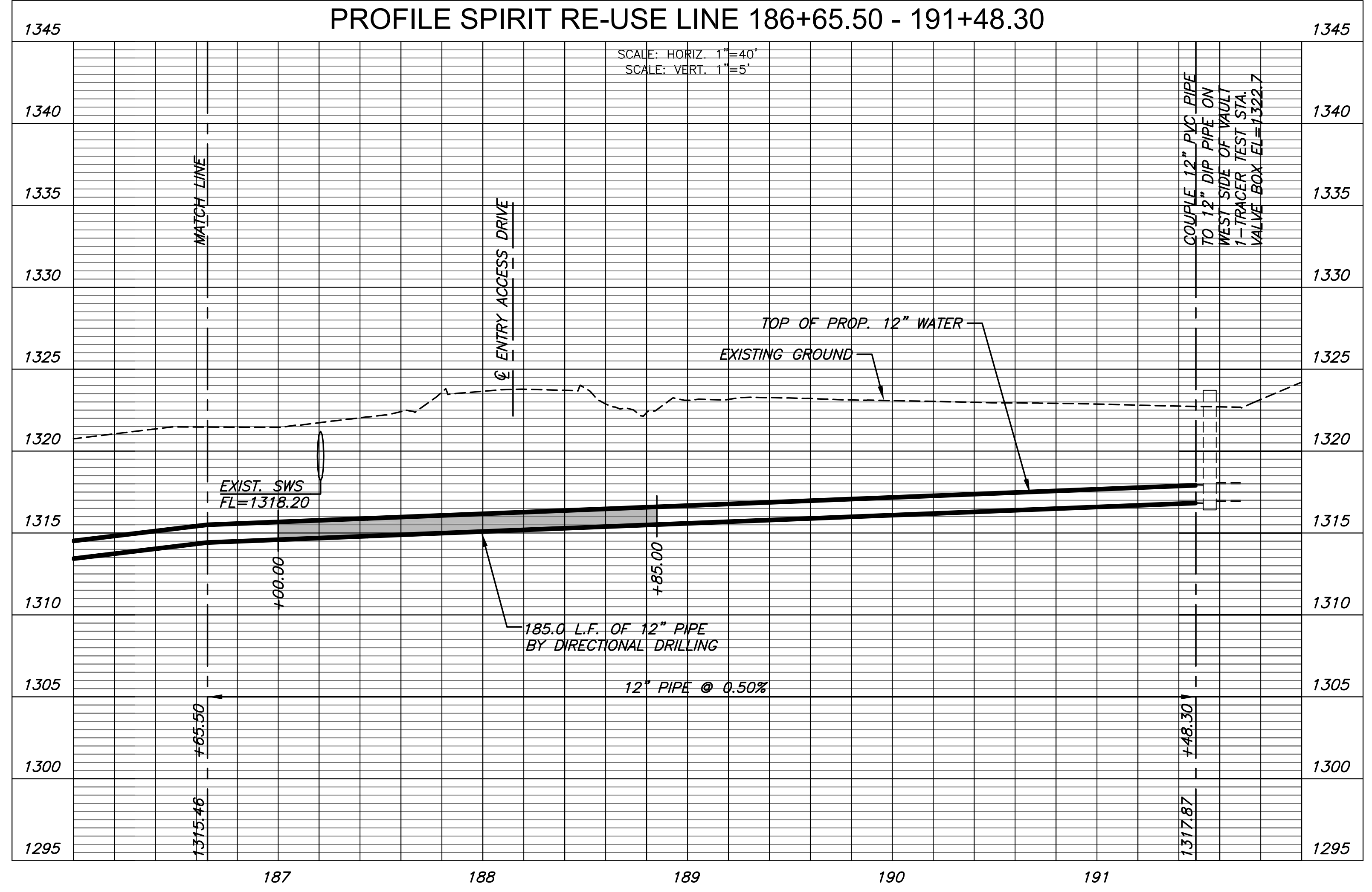
NOTE:  
CONTRACTOR TO VERIFY LOCATION  
AND ELEVATION OF EXISTING  
UTILITIES PRIOR TO CONSTRUCTION.

CP#119  
5/8" REBAR W/ 2" ALUMINUM  
MKEC CP ID CAP  
N=1663406.431,E=1662677.034

BM#214  
CHISELED SQUARE ON THE S.W.  
CORNER OF AN INLET ON THE E. SIDE  
OF THE ENTRANCE TO SPIRIT ACROSS  
FROM THE TURNPIKE TOLL BOOTH,  
OFF OF TURNPIKE DRIVE.  
ELEV.=1323.520 (NAVD 88)



PLAN SPIRIT RE-USE LINE 186+65.50 - 191+48.30  
PROFILE SPIRIT RE-USE LINE 186+65.50 - 191+48.30



©2016  
MKEC Engineering  
All Rights Reserved  
www.mkec.com  
These drawings and their contents,  
including, but not limited to, all concepts,  
designs, & ideas are the exclusive  
property of MKEC Engineering (MKEC),  
and may not be used or reproduced in any  
way without the express consent of MKEC.

SPIRIT RE-USE LINE 186+65.50-191+48.30	
PROJECT NO.	468-85095
DATE	APRIL 2016
SCALE	1" = 40'
DESIGNED	DRAWN
DFL	JWC
CHECKED	MAB
NO.	REVISION
0	ISSUED FOR CONST.
	06/01/16
	DATE
SHEET NO.	
24 OF 36	