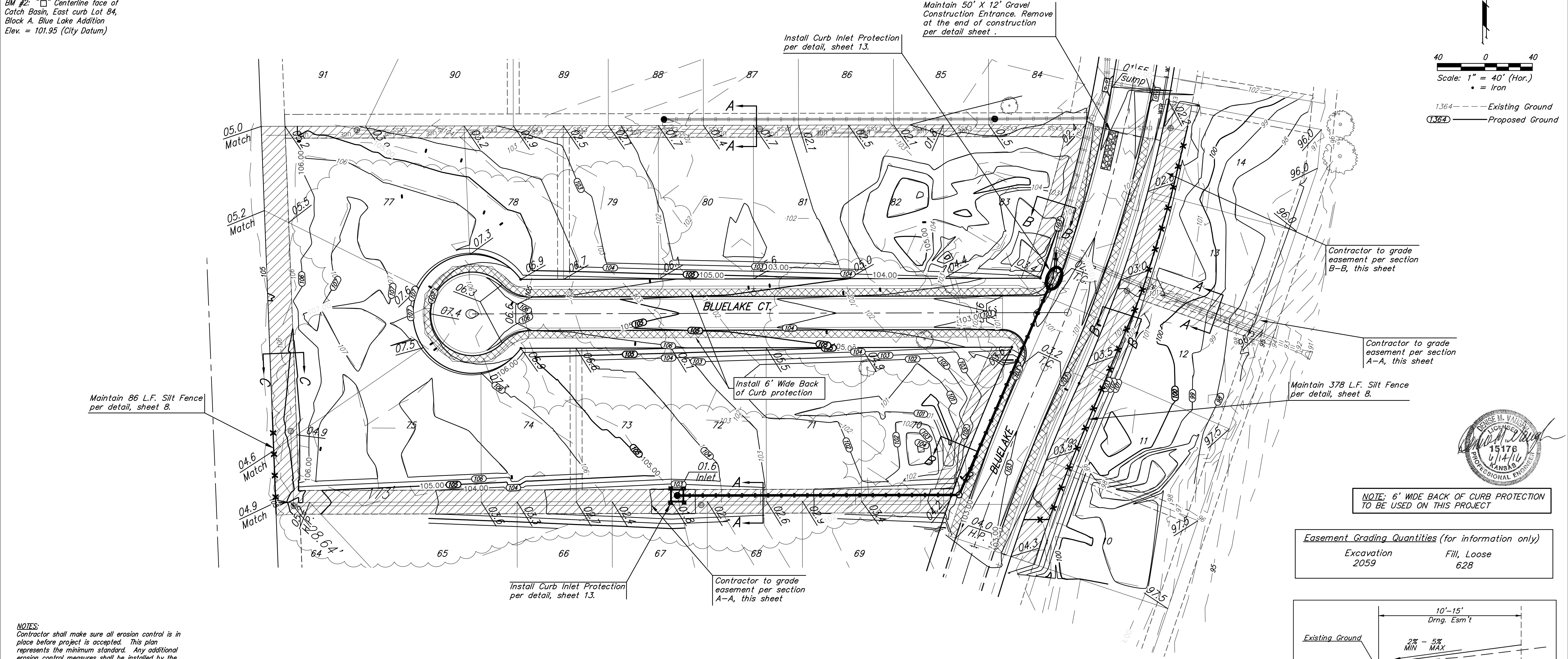
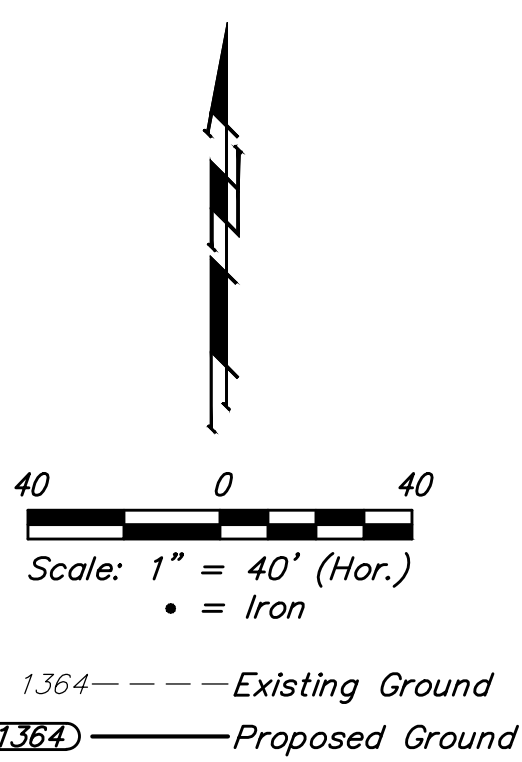


**BENCHMARKS:**

BM #1: "□" on top of South curb Bluelake Ct, Northwest corner of Lot 84, Block A, Blue Lake Addition  
Elev. = 103.10 (City Datum)

BM #2: "□" Centerline face of Catch Basin, East curb Lot 84, Block A, Blue Lake Addition  
Elev. = 101.95 (City Datum)



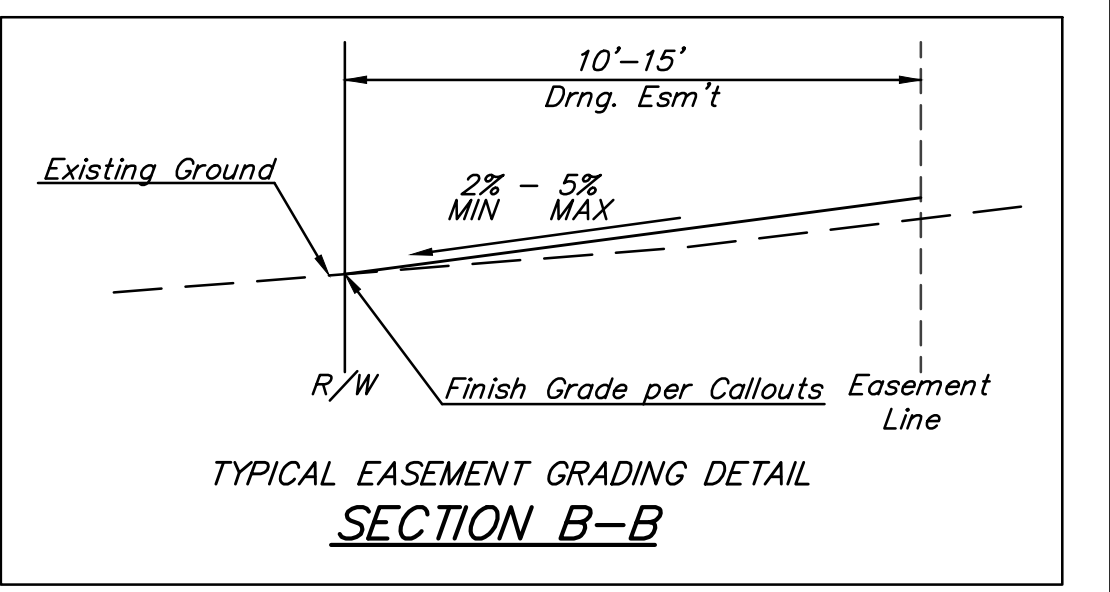
1364 --- Existing Ground  
1364 --- Proposed Ground



**NOTE: 6' WIDE BACK OF CURB PROTECTION TO BE USED ON THIS PROJECT**

**Easement Grading Quantities (for information only)**

|            |      |             |     |
|------------|------|-------------|-----|
| Excavation | 2059 | Fill, Loose | 628 |
|------------|------|-------------|-----|

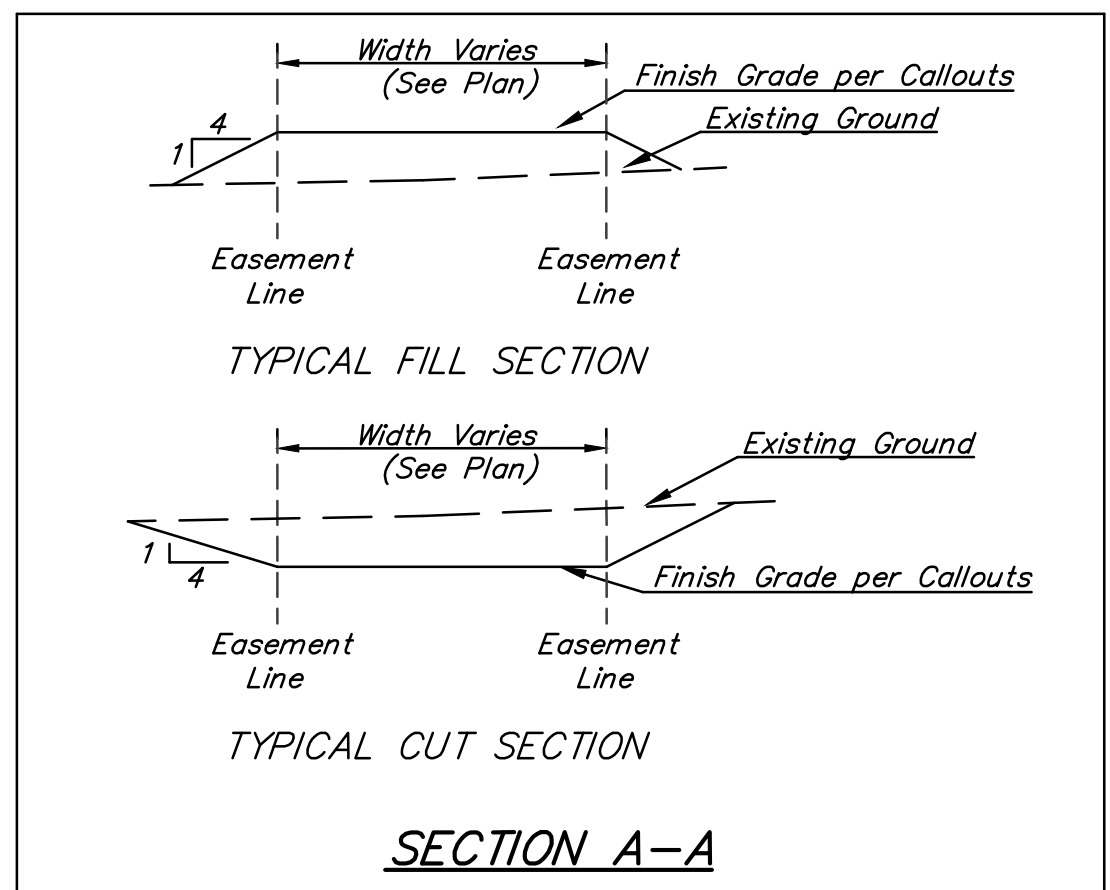
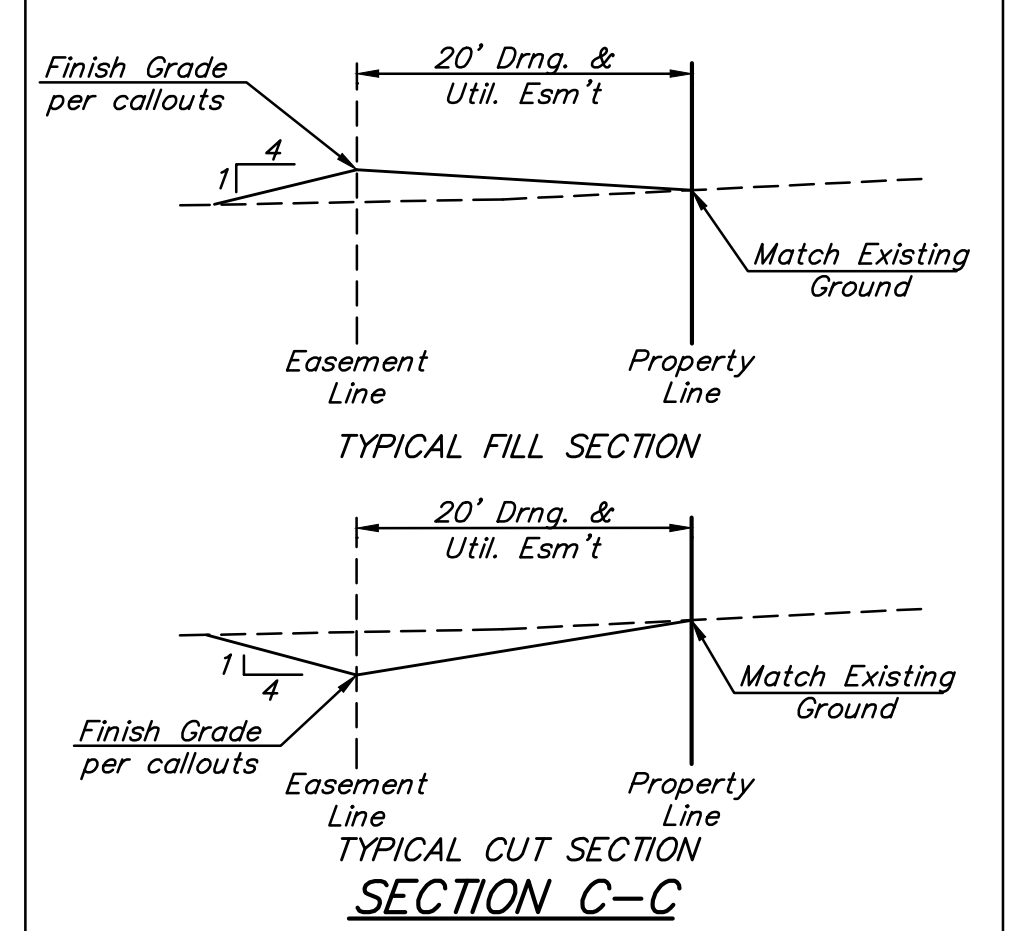
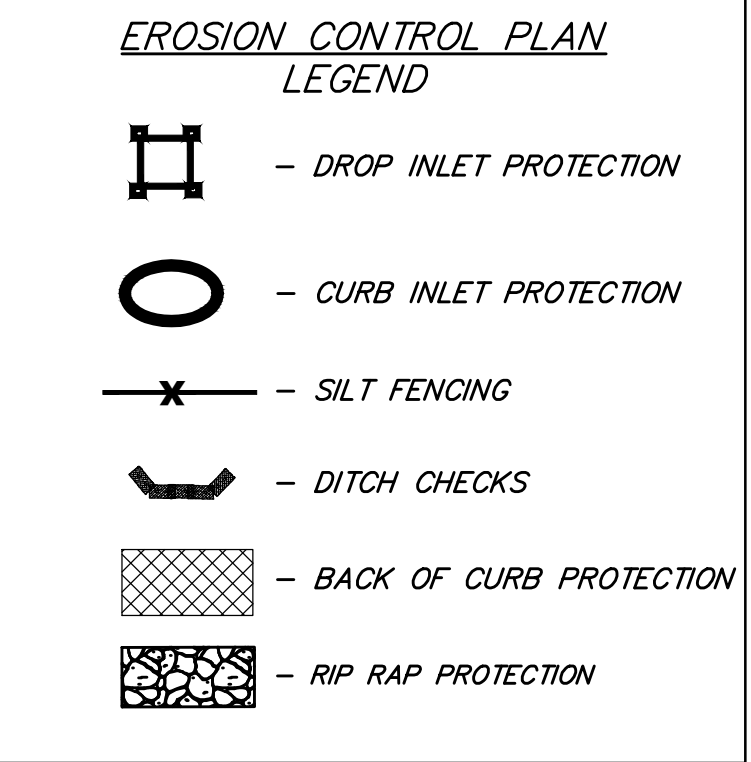


**NOTES:**  
Contractor shall make sure all erosion control is in place before project is accepted. This plan represents the minimum standard. Any additional erosion control measures shall be installed by the Contractor as needed.

All areas disturbed during construction shall be seeded, mulched, and fertilized as per Cover Sheet General Notes.

| EROSION CONTROL MEASURE             | INSTALL | MAINTAIN |
|-------------------------------------|---------|----------|
| CUT-OFF TRENCH (LF)                 | 0       | 0        |
| CONSTRUCTION ENTRANCE (EA)          | 0       | 1        |
| CURB INLET BARRIER (EA)             | 1       | 0        |
| DITCH CHECK (EA)                    | 0       | 0        |
| DROP INLET PROTECTION (EA)          | 1       | 0        |
| EROSION CONTROL (LS)                | 0       | 0        |
| MULCH WATTLES (LF)                  | 0       | 0        |
| SILT FENCE (LF)                     | 0       | 464      |
| EROSION CONTROL MAT (SY)            | 0       | 0        |
| MAINTAIN EROSION CONTROL BMP'S (LS) | 0       | 1        |
| BACK OF CURB PROTECTION (LF)        | 1770    | 0        |

\* ALL EXISTING BMPs INCLUDING CONSTRUCTION ENTRANCE, SEDIMENT BARRIERS, SILT FENCE, CUT-OFF TRENCH, AND EROSION CONTROL MAT SHALL BE MAINTAINED AND REPAIRED IF NECESSARY.



= Easements To Be Graded

The Contractor of this project shall fine grade the Easements as indicated to the elevations given on this plan.

The Contractor shall grade the easements as shown to the elevations given on the easement grading plan.

The Contractor shall 'straight' grade the easements between the elevations given. Where a callout designates 'Match', the Contractor will grade to the existing ground elevation.

Any excess excavation from easement grading shall be stockpiled or spread-on site at a location determined by the Developer or Design Engineer.

All cost to be included in the Lump Sum bid item "Easement Grading"

|  |  |                          |
|--|--|--------------------------|
|  | Blue Lake Addition-Phase 3A              |                          |
|  | <b>EASEMENT GRADING/ EROSION CONTROL</b> |                          |
| Street and Storm Sewer Improvements  |  |                          |
| Baughman Company, P.A. 315 Ellis St. Wichita, KS 67211 P 316.262.0149 F 316.262.0149 |  |                          |
| ENGINEERING   SURVEYING   PLANNING   LANDSCAPE ARCHITECTURE                          |  |                          |
| PROJECT NUMBER<br>472-54076  | DESIGN<br>DMV                            | DRAWN<br>DJL             |
| REVISIONS:   | APPROVED                                 | DATE<br>5/16             |
|  | SCALE<br>Noted                           | SHEET<br><b>12 OF 26</b> |