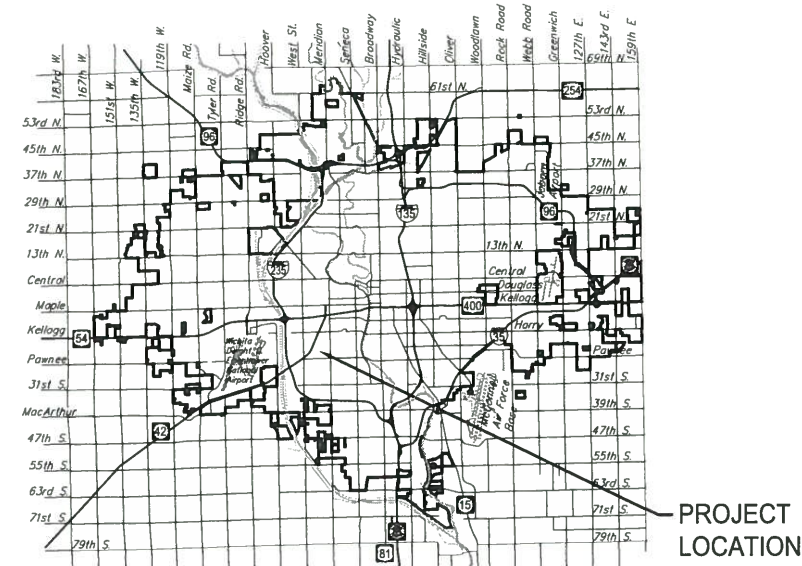


# STORM SEWER IMPROVEMENTS to serve **2054 CUSTER** Southwest Industrial Addition CITY OF WICHITA, KANSAS

Gary Janzen, P.E. City Engineer  
Project Number  
0370 PPD (607861)

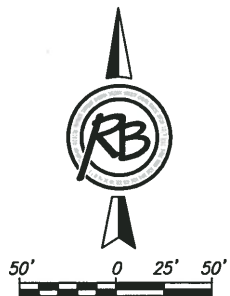


Vicinity Map

## GENERAL NOTES:

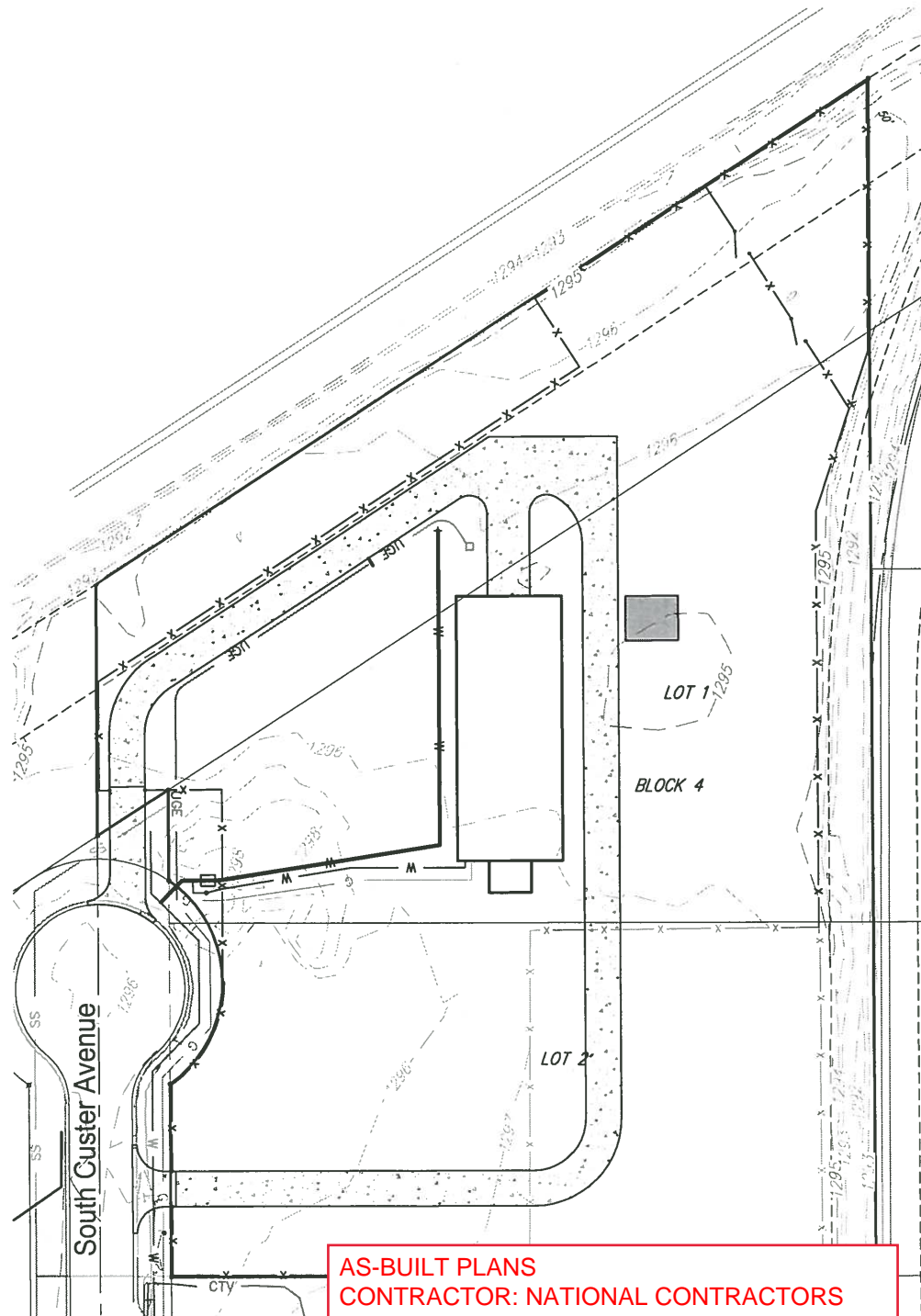
- The Contractor shall comply with all applicable safety regulations. All construction shall be completed following current City Standard Specifications and Special Provisions.
- Contractor will be required to provide notice to utility companies a minimum of seventy-two (72) hours prior to any excavation, as follows:  
Kansas One-Call 687-2470  
The Contractor must notify the following in case of an emergency:  
AT&T 1-316-268-2102  
Black Hills Energy 1-316-941-1628  
City of Wichita Water 1-316-268-8464  
City of Wichita Sewer 1-316-268-4073  
City of Wichita Stormwater 1-316-268-4080  
City of Wichita Traffic 1-316-268-4034  
Cox Communications 1-316-260-7195  
Kansas Gas Service 1-888-482-4950  
Westar 1-316-261-6554
- Utility service lines, poles, etc. are to be adjusted as necessary by others prior to construction unless the plans specifically call for their adjustment by the Contractor or unless the plans specifically identify a utility to be adjusted by its owner during construction. Existing utilities and their location, as shown on the plans, represent the best information obtainable for design. The Contractor will be required to work around existing utilities within the right-of-way which do not conflict with proposed construction.
- Rubble from the removal of miscellaneous structures and excess excavation which is to be wasted shall be disposed of on sites to be provided by the Contractor. These sites shall be approved by the Engineer as to suitability, appearance and site location. Locations, in the opinion of the Engineer, that will leave an unsightly appearance will not be approved. All disposal sites must be approved by the Kansas Department of Health and Environment. Material either stockpiled or disposed of in a flood plain would require a Kansas State Board of Agriculture permit. Any material dumped in waters of the United States or wetlands is subject to U.S. Corps. of Engineers permitting regulations. Any material buried or stockpiled beyond approved construction limits would require additional archaeological investigations unless buried in a previously approved borrow location.
- Trees and shrubs in public right-of-way which are in direct conflict with proposed new construction shall be removed by the Contractor with the Engineer's approval. Trees and shrubs which are not in direct conflict with proposed new construction shall be saved and protected from damage.
- The Contractor shall give all property owners and/or tenants of developed property abutting the construction of this project a minimum of ten (10) days notice prior to start of construction.
- The Contractor shall be responsible for preserving property irons. The Contractor will be required to re-establish any property irons which are damaged or destroyed by his construction operations. Such irons shall be re-established by a licensed land surveyor in accordance with state laws.
- The Water Distribution Division shall field locate water valves one time during construction when requested by the Contractor. It shall be the Contractor's responsibility to preserve such field locations during the construction process. Water valves, valve boxes or fire hydrants damaged during construction shall be repaired by Contractor at his own expense. Valve boxes and water meters within the project limits shall be adjusted to match field grades.
- The Contractor shall notify the consultant engineer and Tom Mason with the City at 316-268-4574 with the anticipated construction start date and notify them of project completion. Staking and inspection for this project will be the responsibility of the Contractor.
- If traffic is impacted by construction, a traffic control plan must be submitted and approved by the City Traffic Engineer, Brian Coon at [traffic@wichita.gov](mailto:traffic@wichita.gov) before construction can begin. The Contractor shall be responsible for all traffic control measures to facilitate construction. All construction zone markings and signage shall conform to the latest version of the Manual on Uniform Traffic Control Devices (MUTCD) as published by the US Dept. of Transportation, Federal Highway Administration. All costs associated with construction markings and signage shall be the Contractors responsibility.
- All elevations shown are (NAVD 88).
- All areas disturbed during construction that will not be under proposed pavement shall be restored to match existing conditions.

- A portion of excess excavated material shall be mounded around manholes which extend more than one (1) foot above the existing ground. Such mound shall be constructed with new development a six (6) foot diameter flat top with 4 to 1 side slopes down to the original ground. The elevation of the flat top of the mound shall be 0.4 foot below the top to the manhole.
- Geotechnical report available upon request.
- Contractor shall limit the extent of trench openings overnight and weekends to less than 50 feet.
- Contractor shall provide positive drainage away from all manhole covers.
- City maintenance of storm sewer ends at right-of-way or easement line.
- Any sidewalk, drive approach, or street pavement removed to construct project must have a pavement cut permit and be replaced by the City contractor. Permits can be obtained by calling 316-268-4501 or 316-268-4480.
- The inspecting firm shall submit to the City Stormwater Maintenance Division a digital copy of the CCTV inspection of the conduits and structures following construction. The digital file formation shall be compatible with the City input template. A copy of the template is available upon request at 316-268-4090.



## Benchmarks

POINT #30  
SQUARE-CUT ON TOP OF EAST CURB,  
BEGINNING OF CUL-DE-SAC, SOUTH  
CUSTER AVENUE  
ELEVATION = 1295.19 (NAVD88)



## Sheet Index

Title Sheet	1
Grading Plan	2
Pond Plan	3
Erosion Control BMP Details (available on the City's website)	4-8

**Stormwater Certification:**  
New Development

These construction plans were prepared in accordance with the current Stormwater Management Regulations as set forth in the City of Wichita's Stormwater Management Ordinance 16.32 and the policies/guidelines presented in the Wichita/Sedgwick County Stormwater Manual.

Disturbed Area = 5.1 acres  
Water Quality Volume = 0.168 ac-ft  
Water Quality Treatment: 0.46 ac-ft storage is more than accounted for with onsite pond.  
Downstream Channel Protection: Onsite pond  
The BMP used for this development is the proposed grass channel feeding into the onsite pond.

APPROVED AS NOTED  
BY WICHITA PUBLIC WORKS ENGINEERING  
AND STORMWATER DIVISION

Engineering *Rebecca JJA 2/24/16*  
Stormwater *[Signature] 02/25/16*

NOTE TO CONTRACTORS

Installation, inspection and testing for this project is to be provided by a Licensed Consulting Engineering Firm under contract with the Owner/Developer. Said inspection to be in accordance with the City of Wichita standard construction engineering practices and certified by a Licensed Professional Engineer in the state of Kansas. No work shall be performed the Contractor without such inspection nor shall any work be commenced without written authorization by the City Engineer. All Construction and Materials shall comply with the current City of Wichita Specifications and Standards and Special Provisions. (on file and available at [Wichita.gov](http://Wichita.gov)).

An approved copy of these plans signed by City staff are required on-site.



**SITE ERU INFO.**

Lot Area	222,485 Sq.Ft.
Impervious Area	33,387 Sq.Ft.
Building Area	9,000 Sq.Ft.
Percent Impervious	15%

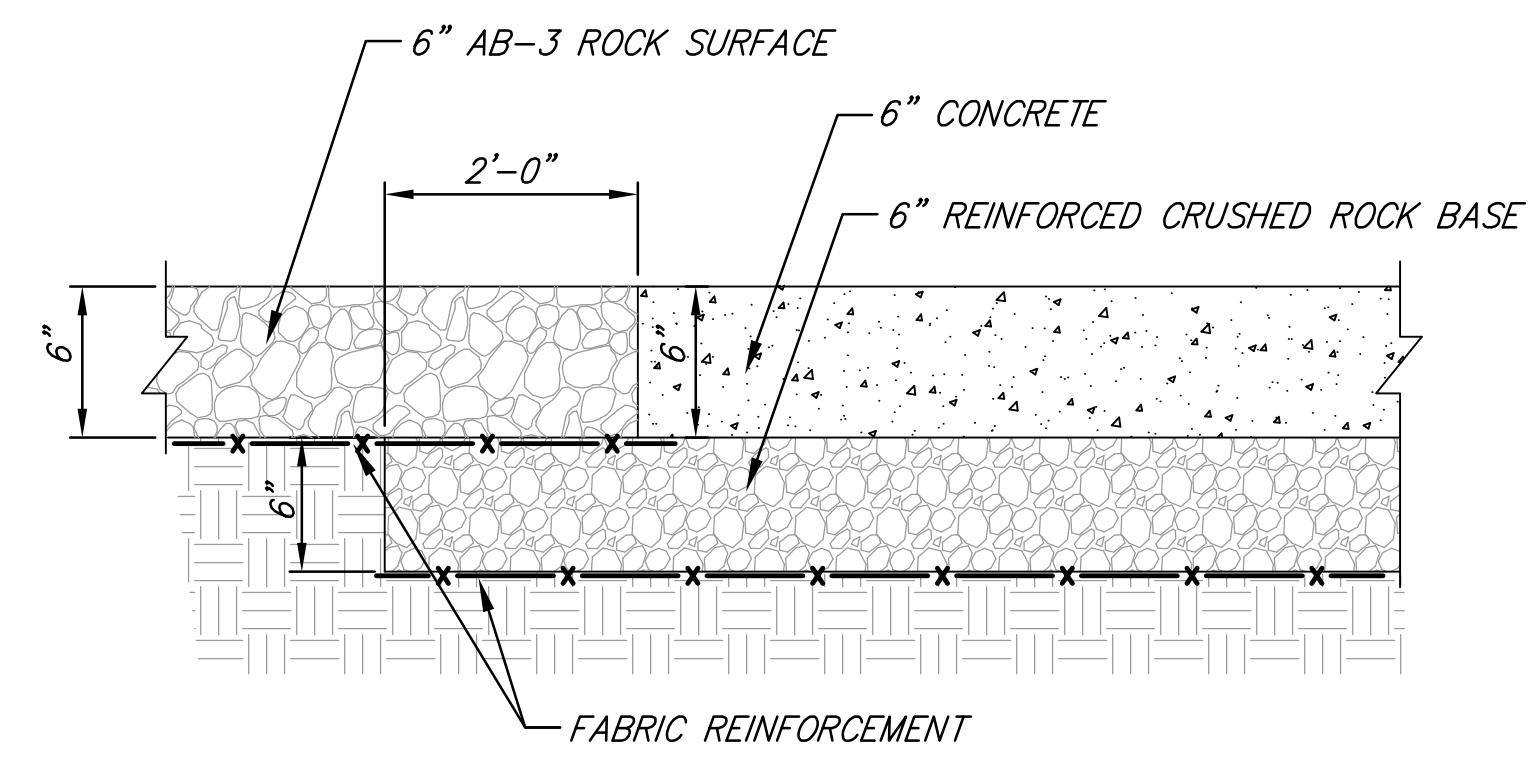
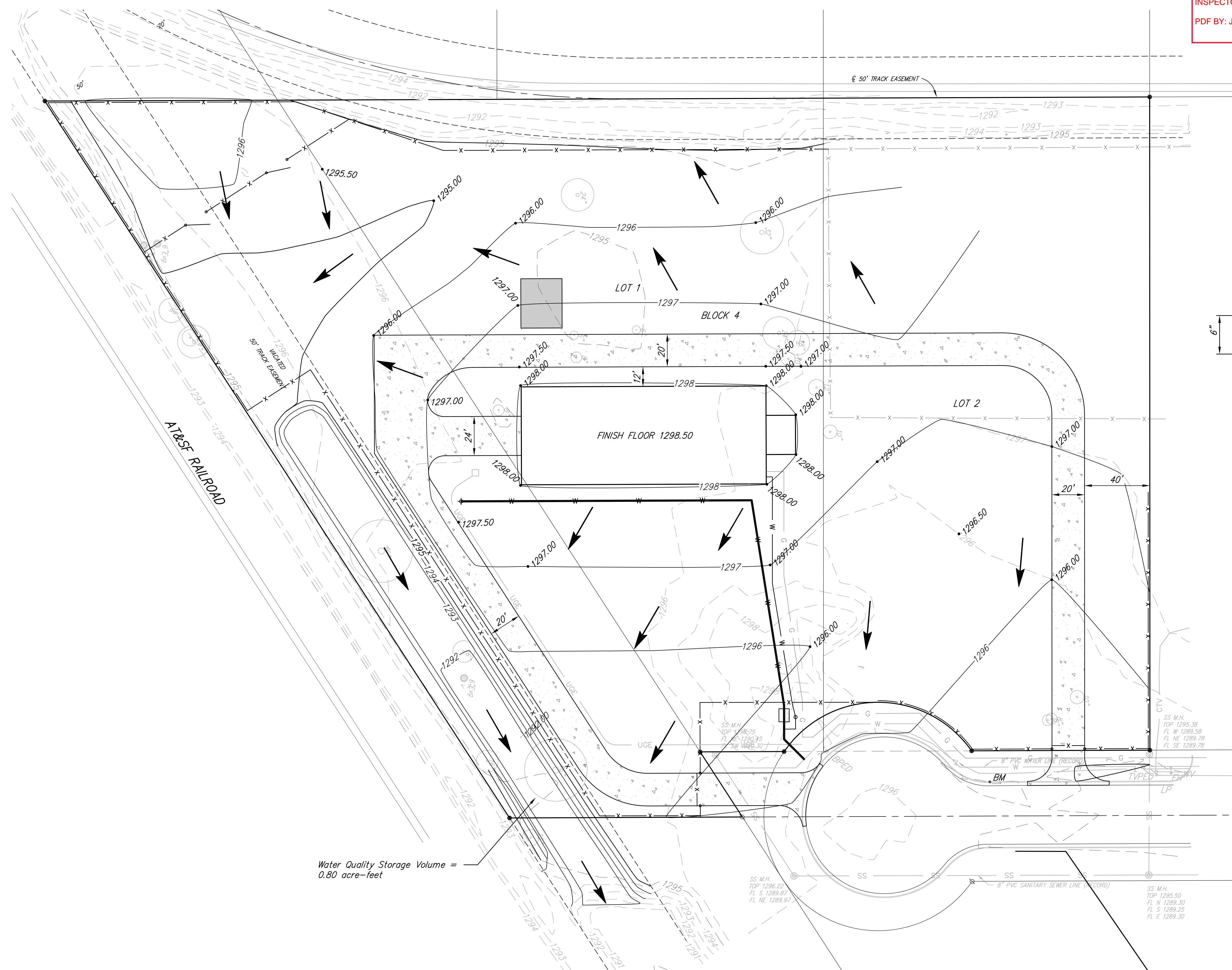
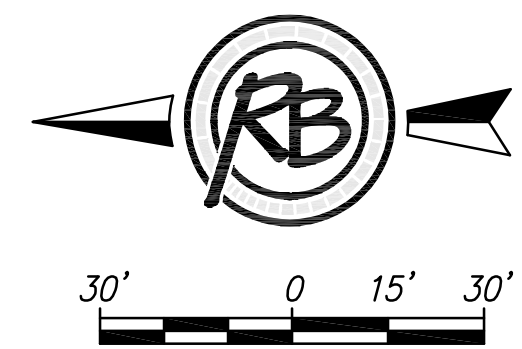
AS-BUILT PLANS  
CONTRACTOR: NATIONAL CONTRACTORS  
INSPECTOR: DAKOTA ZIMMERMAN  
RUGGLES & BOHM PA  
PDF BY: JRA 6/14/2016



ENGINEERING | SURVEYING | LANDSCAPE ARCHITECTURE | GOVERNMENT  
924 NORTH MAIN WICHITA, KANSAS 67203 P (316) 264-8008 F (316) 264-4621  
[WWW.RBKANSAS.COM](http://WWW.RBKANSAS.COM)

February 2016

AS-BUILT PLANS  
 CONTRACTOR: NATIONAL CONTRACTORS  
 INSPECTOR: DAKOTA ZIMMERMAN  
 RUGGLES & BOHM PA  
 PDF BY: JRA 6/14/2016



CONCRETE PAVEMENT SECTION

**2054 S CUSTER  
 LOT 1, 2 BLOCK 4  
 SOUTHWEST INDUSTRIAL ADDITION  
 WICHITA, SEDGWICK COUNTY, KS.**

ZONING (LI) Limited Industrial

Lot Area	222,485 Sq.Ft.
Impervious Area	33,387 Sq.Ft.
Building Square Feet	9,000 Sq.Ft.
Percent Impervious	15%

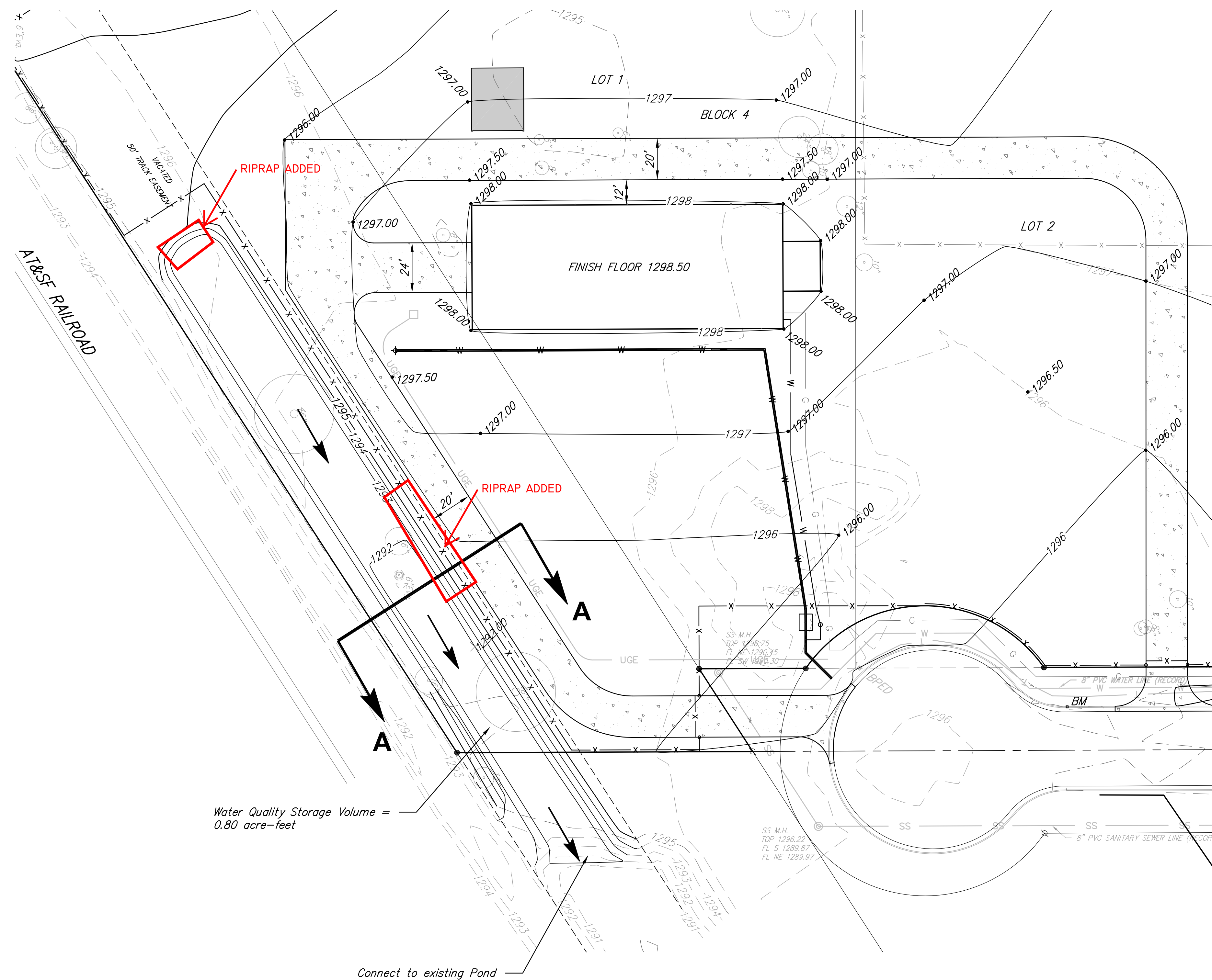
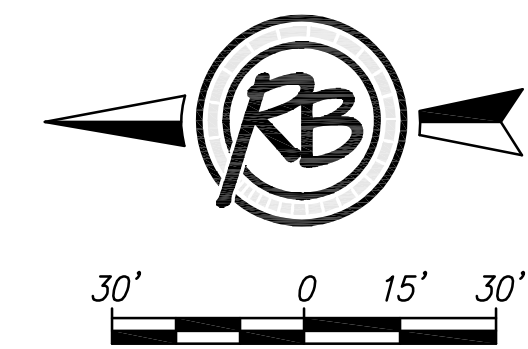
**Legend**

Concrete Pavement - 6" Concrete with 6" Reinforced Crushed Rock base

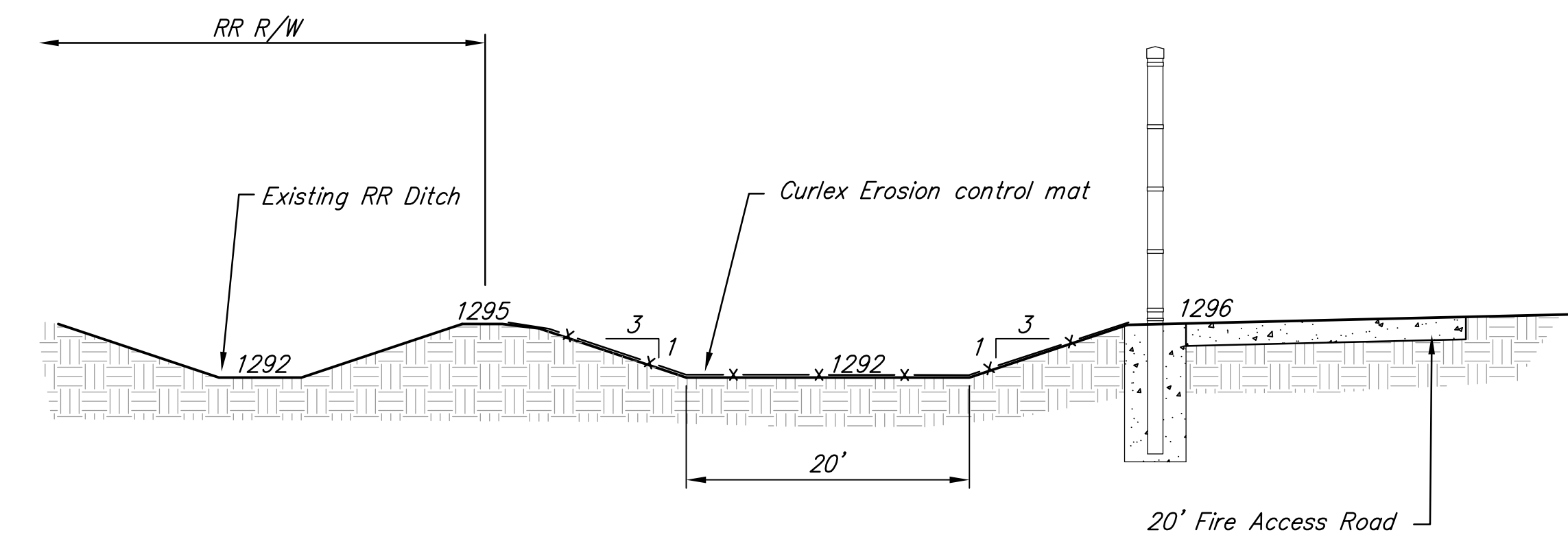
Water Quality Storage Volume =  
 0.80 acre-feet

<b>BRACE BUILDING 2 SITE GRADING PLAN</b>		DATE Feb. 15, 2016
<b>RUGGLES &amp; BOHM</b>		DESIGN RA / CMB
<small>ENGINEERING   SURVEYING   LANDSCAPE ARCHITECTURE   GOVERNMENT 924 NORTH MAIN WICHITA, KANSAS 67203 P (316) 264-8008 F (316) 264-4621 WWW.RBKANSAS.COM</small>		DRAWN RA
PROJECT NUMBER 4660E	RB JOB NO. 4660E	REVIEW .
DRAWING FILE 4660 Engineering Base (Engineering)		SHEET 2
DWG. SCALE 1" = 30'		OF 8

AS-BUILT PLANS  
 CONTRACTOR: NATIONAL CONTRACTORS  
 INSPECTOR: DAKOTA ZIMMERMAN  
 RUGGLES & BOHM PA  
 PDF BY: JRA 6/14/2016



Water Quality Storage Volume =  
 0.80 acre-feet



**POND SECTION A-A**

**2054 S CUSTER  
 LOT 1, 2 BLOCK 4  
 SOUTHWEST INDUSTRIAL ADDITION  
 WICHITA, SEDGWICK COUNTY, KS.**

ZONING (LI) Limited Industrial  
 Lot Area 222,485 Sq.Ft.  
 Impervious Area 33,387 Sq.Ft.  
 Building Square Feet 9,000 Sq.Ft.  
 Percent Impervious 15%

<b>BRACE BUILDING 2 POND GRADING PLAN</b>		DATE Feb. 15, 2016
<b>RUGGLES &amp; BOHM</b> <small>ENGINEERING   SURVEYING   LANDSCAPE ARCHITECTURE   GOVERNMENT</small> <small>924 NORTH MAIN WICHITA, KANSAS 67203 P (316) 264-8008 F (316) 264-4621 WWW.RBKANSAS.COM</small>		DESIGN RA / CMB
		DRAWN RA
PROJECT NUMBER 4660E	RB JOB NO. 4660E	DATE Feb. 15, 2016
DRAWING FILE 4660 Engineering Base (Engineering)	DWG. SCALE 1" = 30'	SHEET 3
		OF 8