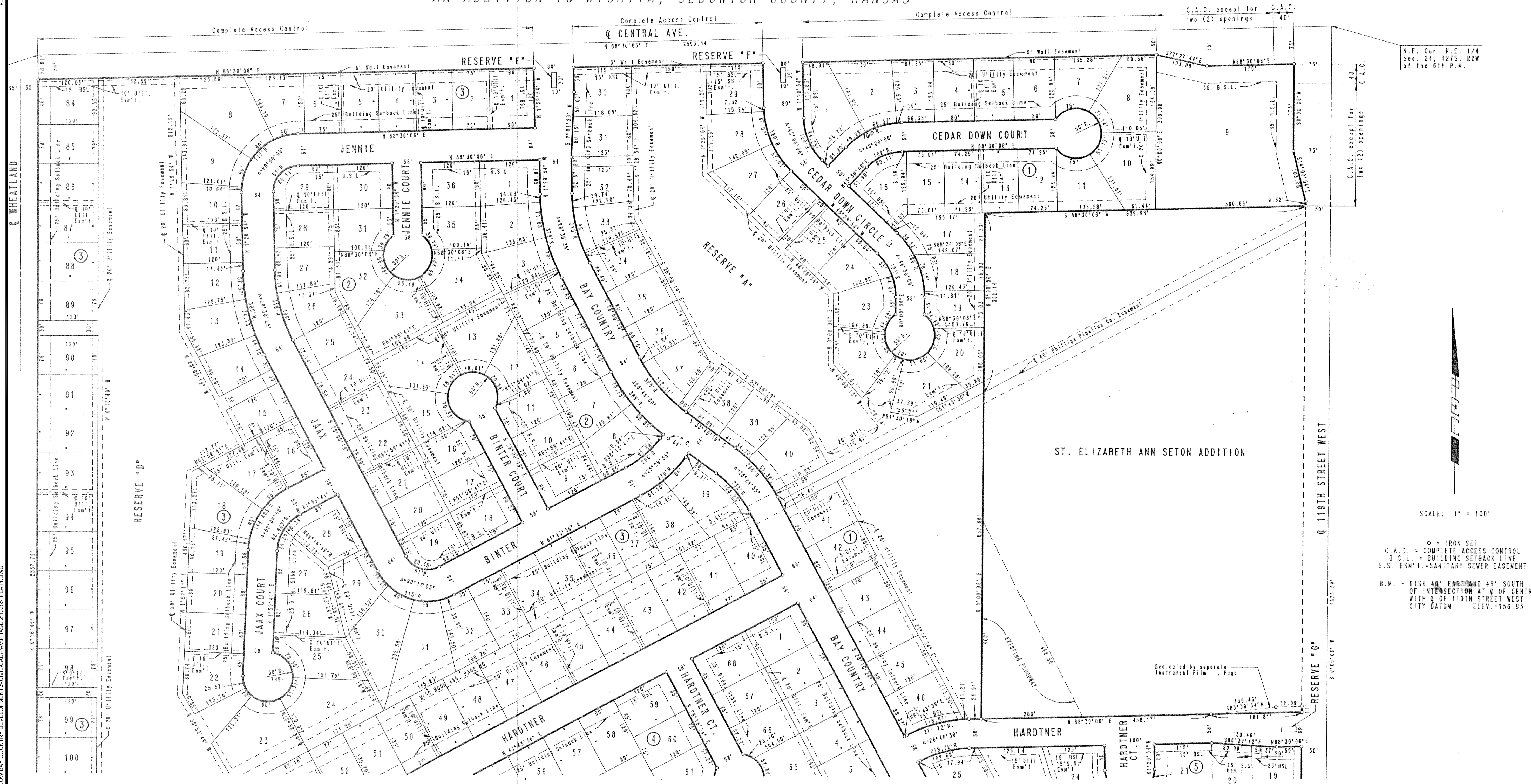


# BAY COUNTRY

AN ADDITION TO WICHITA, SEDGWICK COUNTY, KANSAS



## PAVING & INCIDENTAL DRAINAGE FOR BAY COUNTRY ADDITION PHASE 2

### FINAL PLAT 1

PROJECT NO.	472-85104	
DATE	JUNE 2016	
SCALE	#"=#	
DESIGNED	DRAWN	CHECKED
SPE	SPE	SPE
#	REVISION	DATE
NO.	REVISION	DATE

BLOCK 1:	LOTS 20 THROUGH 40 INCLUSIVE:	1340.0 (M.S.L.)=152.6 (C.O.W.)
	LOTS 41 THROUGH 46 INCLUSIVE:	1338.0 (M.S.L.)=150.6 (C.O.W.)
BLOCK 3:	LOTS 8 THROUGH 18 INCLUSIVE:	1338.0 (M.S.L.)=150.6 (C.O.W.)
	LOTS 19 THROUGH 23 INCLUSIVE:	1336.0 (M.S.L.)=148.6 (C.O.W.)
	LOTS 54 THROUGH 57 INCLUSIVE:	1336.0 (M.S.L.)=148.6 (C.O.W.)
	LOTS 60 THROUGH 79 INCLUSIVE:	1328.0 (M.S.L.)=140.6 (C.O.W.)
	LOTS 84 THROUGH 93 INCLUSIVE:	1338.0 (M.S.L.)=150.6 (C.O.W.)
	LOTS 94 THROUGH 102 INCLUSIVE:	1336.0 (M.S.L.)=148.6 (C.O.W.)
BLOCK 5:	LOTS 6 THROUGH 39 INCLUSIVE:	1336.0 (M.S.L.)=148.6 (C.O.W.)

I:\CTAS\307\PROJECTS\2016\1010385\_COV\BAY COUNTRY DEVELOPMENTS\CIVIL\CA\PAVING\PHASE 2\10385\_FLAT1.DWG  
 LIBRA SEDGWICK LIBRA  
 PLOTTED: Tuesday, June 28, 2016 @ 05:17PM