

BAY COUNTRY

AN ADDITION TO WICHITA, SEDGWICK COUNTY, KANSAS



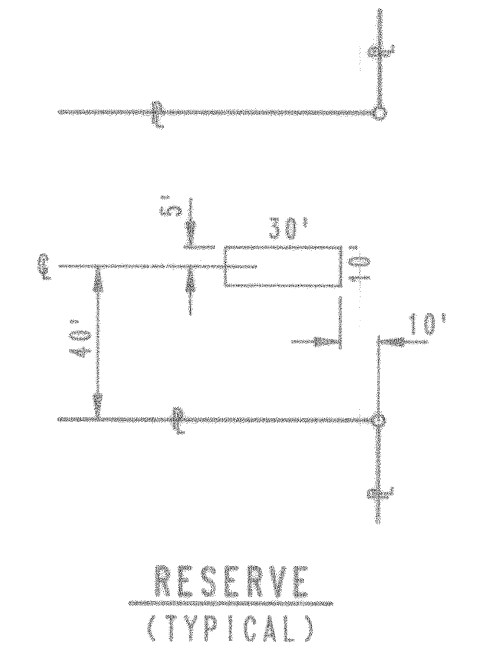
PLOTTED: Tuesday, June 28, 2016 @ 06:19PM



SCALE: 1" = 100'

○ = IRON SET
 C.A.C. = COMPLETE ACCESS CONTROL
 B.S.L. = BUILDING SETBACK LINE
 S.S. ESM.T. = SANITARY SEWER EASEMENT

B.M. - DISK 40' EAST AND 46' SOUTH OF INTERSECTION AT # OF CENT WITH # OF 119TH STREET WEST CITY DATUM ELEV. -156.93



PAVING & INCIDENTAL DRAINAGE FOR BAY COUNTRY ADDITION PHASE 2

©2013 MKEC Engineering All Rights Reserved
 www.mkec.com
 These drawings and their contents, including, but not limited to, all concepts, designs, & ideas are the exclusive property of MKEC Engineering (MKEC), and may not be used or reproduced in any way without the express consent of MKEC.

FINAL PLAT 2

PROJECT NO.	472-85104	
DATE	JUNE 2016	
SCALE	#"-#"	
DESIGNED	DRAWN	CHECKED
SPE	SPE	SPE

#	REVISION	DATE

SHEET NO.
24 OF 24

I:\CTAS03\VOL7\PROJECTS\2013\1010385_COV\BAY COUNTRY DEVELOPMENTS\CIVIL\CA\PAV\PHASE 2\1385_FLAT2.DWG

S.W. Cor. N.E. 1/4
 Sec. 24, T27S, R2W
 of the 6th P.M.