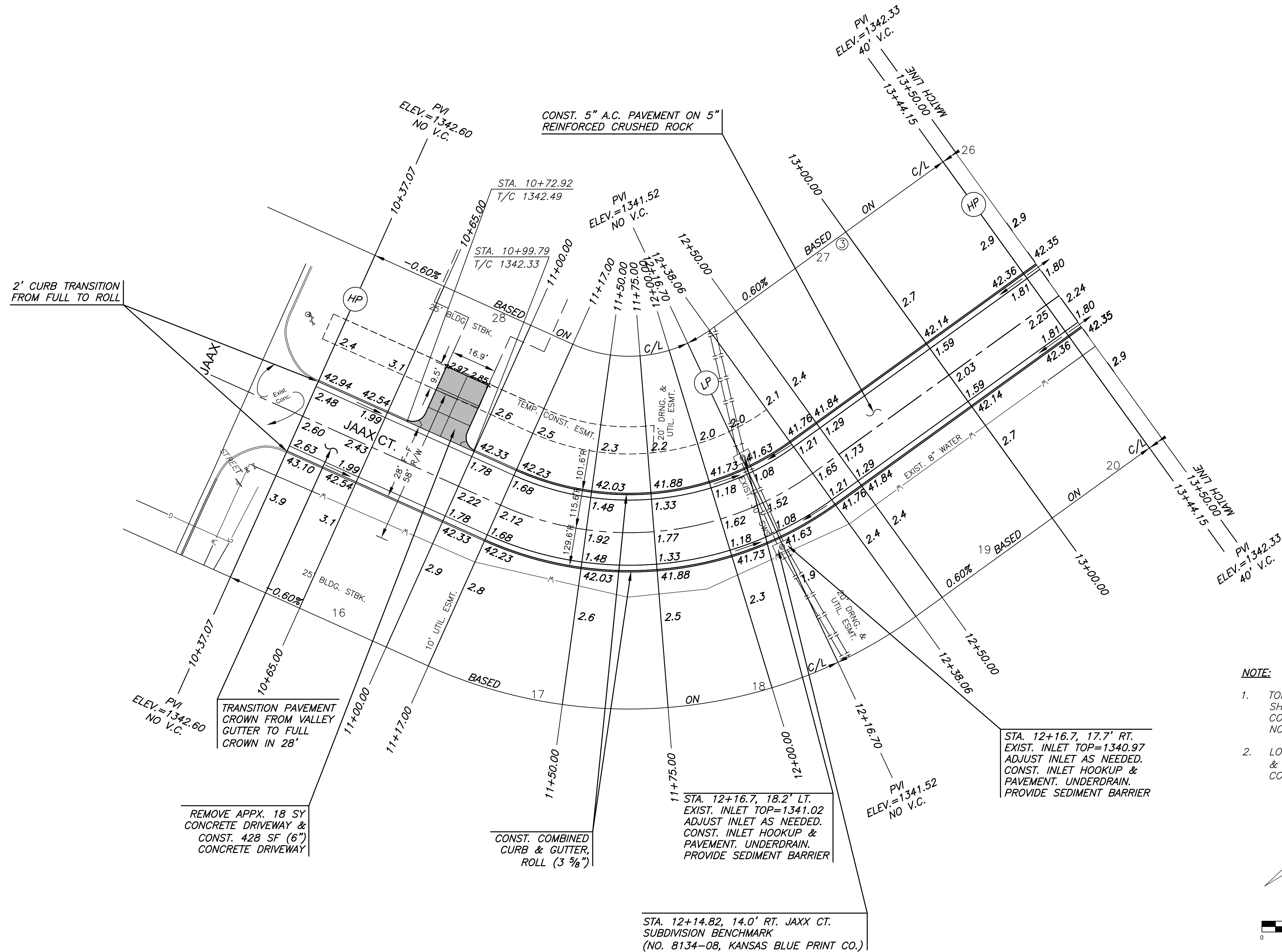


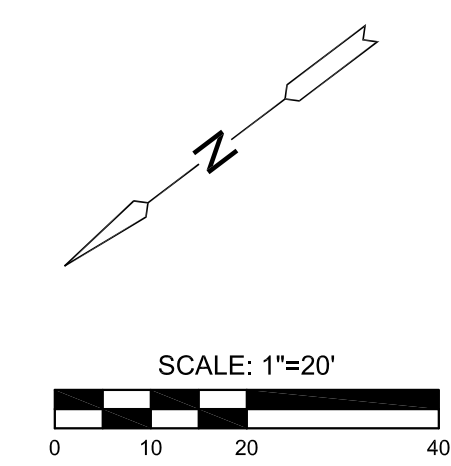
PAVING & INCIDENTAL DRAINAGE FOR  
**BAY COUNTRY ADDITION**  
PHASE 2

SUBDIVISION BENCH MARKS				
NO.	STREET AND STATION	FROM CL	DESCRIPTION	ELEVATIONS
1	JAXX CT., STA. 12+14.82	14.0' RT	TOP OF CURB AT N END OF INLET HOOKUP	
2				

NOTE: CONTRACTOR SHALL INSTALL SUBDIVISION BENCH MARKS ("FLAT SURVEY MARKERS NO. 8134-08 3" TOP DIAMETER" PROVIDED BY KANSAS BLUE PRINT CO., INC.) COSTS TO BE CONSIDERED SUBSIDIARY TO CONSTRUCTION OF COMBINED CURB AND GUTTER.



- NOTE:**
- TOP OF CURB ELEVATIONS SHOWN ARE FULL CURB. CONSTRUCT CURB & GUTTER AS NOTED.
  - LOT 28 HAS AN EXISTING HOME & SIDE LOADED GARAGE W/ CONCRETE DRIVEWAY



©2016 MKEC Engineering All Rights Reserved www.mkec.com  
These drawings and their contents, including, but not limited to, all concepts, designs, & ideas are the exclusive property of MKEC Engineering (MKEC), and may not be used or reproduced in any way without the express consent of MKEC.

PROJECT NO.		472-85104
DATE		JUNE 2016
SCALE		1"=20'
DESIGNED	DRAWN	CHECKED
SPE	CRM	SPE
NO.	REVISION	DATE
SHEET NO.		
7 OF 24		

W:\CTAS03\WOL7\PROJECTS\2013\101010386\_CDDV\BAY COUNTRY DEVELOPMENT\CIVIL\CAOP\PAVPHASE 2\13386\_E1.DWG  
 PLOTTED: Tuesday, June 28, 2016 @ 04:49PM